



Chipsmall Limited consists of a professional team with an average of over 10 year of expertise in the distribution of electronic components. Based in Hongkong, we have already established firm and mutual-benefit business relationships with customers from,Europe,America and south Asia,supplying obsolete and hard-to-find components to meet their specific needs.

With the principle of “Quality Parts,Customers Priority,Honest Operation,and Considerate Service”,our business mainly focus on the distribution of electronic components. Line cards we deal with include Microchip,ALPS,ROHM,Xilinx,Pulse,ON,Everlight and Freescale. Main products comprise IC,Modules,Potentiometer,IC Socket,Relay,Connector.Our parts cover such applications as commercial,industrial, and automotives areas.

We are looking forward to setting up business relationship with you and hope to provide you with the best service and solution. Let us make a better world for our industry!



Contact us

Tel: +86-755-8981 8866 Fax: +86-755-8427 6832

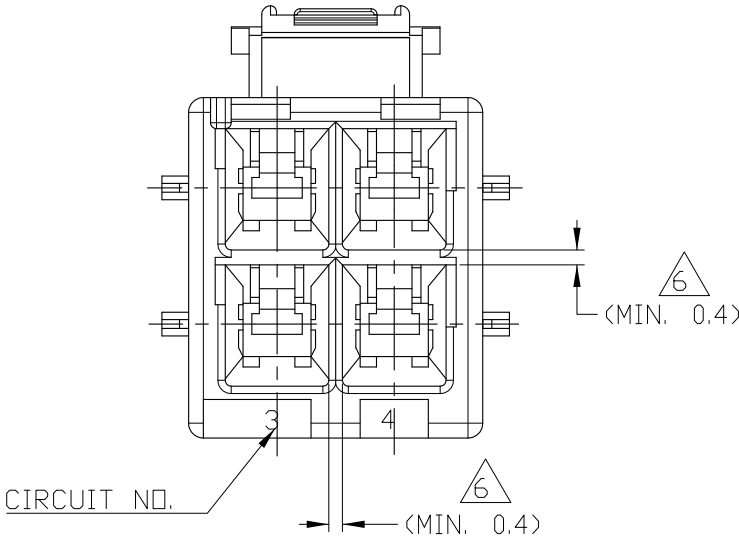
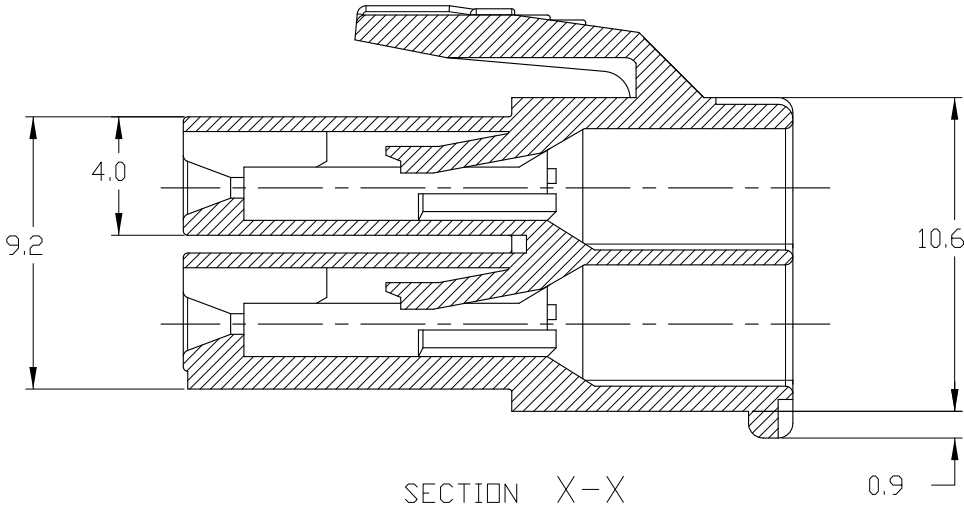
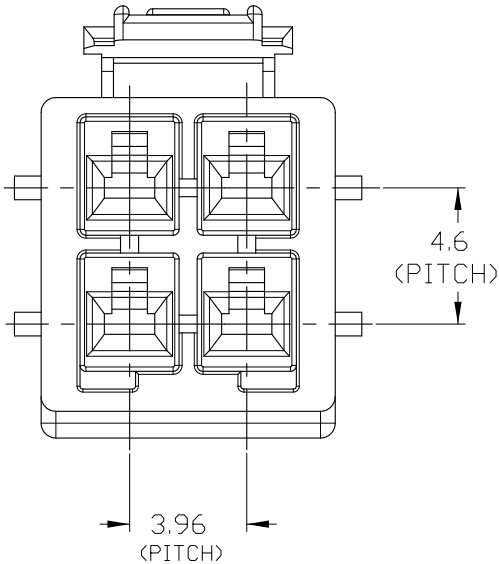
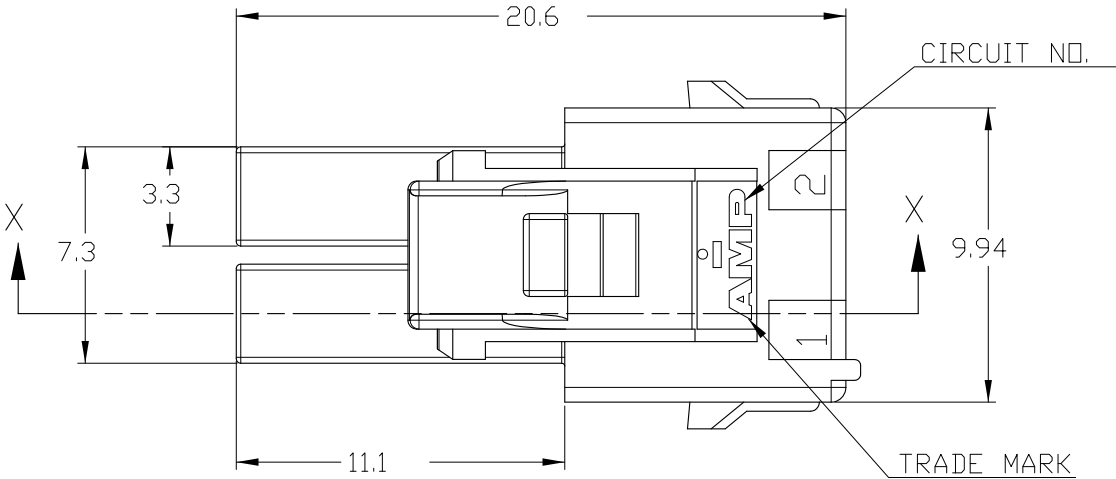
Email & Skype: info@chipsmall.com Web: www.chipsmall.com

Address: A1208, Overseas Decoration Building, #122 Zhenhua RD., Futian, Shenzhen, China



THIS DRAWING IS UNPUBLISHED.		RELEASED FOR PUBLICATION		20		REVISIONS							
© COPYRIGHT 20		BY TYCO ELECTRONICS CORPORATION. ALL RIGHTS RESERVED.				LOC	DIST	P	LTR	DESCRIPTION	DATE	DWN	APVD
NOTE;						DS	-		C	REVISED (ECR-08-026136)	02.MAR'09	SC	JK
								C1	REVISED (ECR-09-011788)	25.MAY'09	SC	JK	

NOTE;
1.APPLICABLE CONTACT P/N
-REC CONTACT:177915- □(AWG#16-#20)
:177914- □(AWG#22-#26)
2.MATING CONN.P/N
-CAP HSG: □-368587-□(FREE HANGING)
□-368589-□(PANEL MOUNT)
-TAB CONTACT:177917- □(AWG#16-#20)
177916- □(AWG#22-#26)
-PC BOARD MOUNT:179840- □
3.APPLICABLE DOUBLE LOCK PLATE:
177918-1(V-□) OR □-368590-1(V-2,GWT)
*IT SHOULD BE USED CERTAINLY WHEN CABLE ASS'Y
4.GENERAL TOLERANCES:±0.3
5.ACCORDING TO IEC 60335-1 4.2 EDITION
-PART MEETS GWT 750°& 850°C.
-MATERIAL MEETS BALL PRESSURE TESTING AT 125°C.
-MATERIAL HAS CTI VALUE OF 250V.
△MIN.THICKNESS OF INSULATING WALL



1-368575-6	PA66 UL94V-0	BLUE
1-368575-4		YELLOW
1-368575-2		RED
1-368575-1		NATURAL
368575-6	PA66 UL94V-2	BLUE
368575-4		YELLOW
368575-2		RED
368575-1		NATURAL
P/N	MATERIAL	COLOR

THIS DRAWING IS A CONTROLLED DOCUMENT FOR TYCO ELECTRONICS CORPORATION IT IS SUBJECT TO CHANGE AND THE CONTROLLING ENGINEERING ORGANIZATION SHOULD BE CONTACTED FOR THE LATEST REVISION.	
DIMENSIONS: mm	TOLERANCES UNLESS OTHERWISE SPECIFIED: 0 PLC ±- 1 PLC ±- 2 PLC ±- 3 PLC ±- 4 PLC ±- ANGLES ±- MATERIAL - FINISH -

DWN SC KIM	AMP KOREA Kyungsan, Korea		
CHK BW KANG			
APVD JK SONG	NAME		
PRODUCT SPEC 108-61106	PDL 4P PLUG HSG 3.96mm D/R (GWT)		
APPLICATION SPEC -	SIZE A3	CAGE CODE 00779	DRAWING NO 368575
WEIGHT -	RESTRICTED TO -		REV C1
CUSTOMER DRAWING		SCALE N/A	SHEET 1 OF 1