



Chipsmall Limited consists of a professional team with an average of over 10 year of expertise in the distribution of electronic components. Based in Hongkong, we have already established firm and mutual-benefit business relationships with customers from,Europe,America and south Asia,supplying obsolete and hard-to-find components to meet their specific needs.

With the principle of “Quality Parts,Customers Priority,Honest Operation,and Considerate Service”,our business mainly focus on the distribution of electronic components. Line cards we deal with include Microchip,ALPS,ROHM,Xilinx,Pulse,ON,Everlight and Freescale. Main products comprise IC,Modules,Potentiometer,IC Socket,Relay,Connector.Our parts cover such applications as commercial,industrial, and automotives areas.

We are looking forward to setting up business relationship with you and hope to provide you with the best service and solution. Let us make a better world for our industry!



Contact us

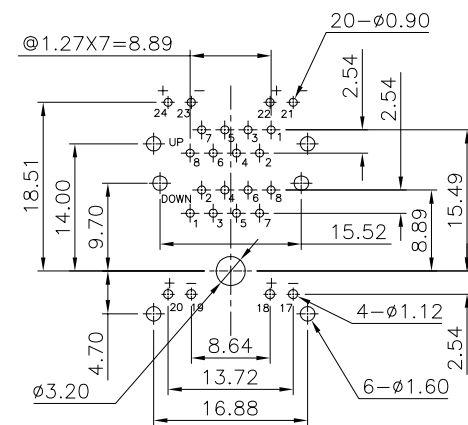
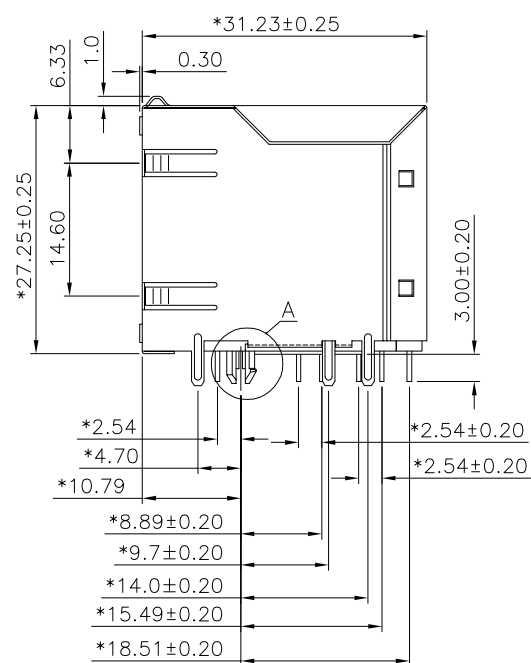
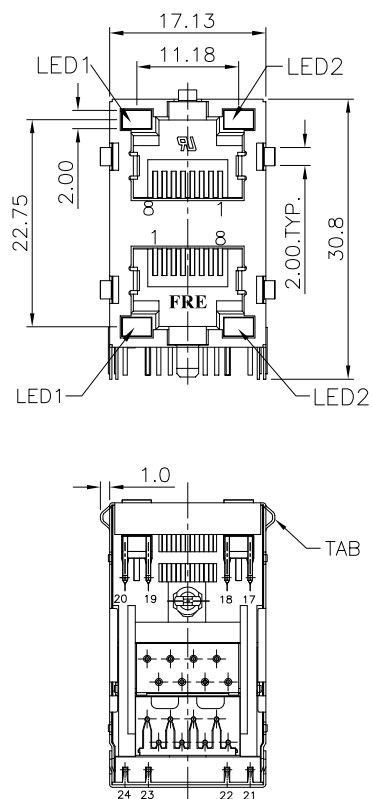
Tel: +86-755-8981 8866 Fax: +86-755-8427 6832

Email & Skype: info@chipsmall.com Web: www.chipsmall.com

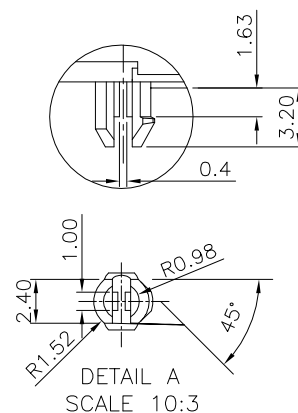
Address: A1208, Overseas Decoration Building, #122 Zhenhua RD., Futian, Shenzhen, China



H
G
F
E
D
C
B
A



PC Board Layout t=1.6mm
Component Side Shown Tolerance±0.05mm



NOTES:

ELECTRICAL:

1. VOLTAGE RATING : 125 VAC RMS.
2. CURRENT RATING : 1.5 AMP.
3. CONTACT RESISTANCE : 50 MILLIOHMS MAX.
4. INSULATION RESISTANCE: 1000 MEGOHMS MIN @ 500 VDC.
5. DIELECTRIC STRENGTH : 1000 VAC RMS 60Hz, 1MIN.

MECHANICAL:


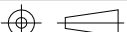
1. HOUSING MATERIAL : NYLON, UL94V-0.
2. CONTACT MATERIAL : PHOSPHOR BRONZE Ø0.46mm.
3. PLATING : GOLD PLATING OVER NICKEL.
4. OPERATING LIFE : 750 CYCLES MIN.
5. PCB RETENTION PRE-SOLDER : 1 LB MIN.
6. PCB RETENTION POST-SOLDER: 10 LBS MIN.
7. LED COLOR : OPTION

ENVIRONMENTAL:

1. STORAGE : -40°C TO +85°C.
2. OPERATION: -40°C TO +85°C.
3. WAVE SOLDERING TEMPERATURE: 255~265°C(5~10 SECONDS)
4. RoHS COMPLIANT.

MATES WITH MODULAR PLUG CONFORMING TO
FCC PART 68, SUBPART F.

PART NUMBER	LED COLOR		GOLD PLATING
	LED 1	LED 2	
E5J88-A4L3F2-L	GREEN	GREEN	6u"
E5J88-A4L3F4-L	GREEN	GREEN	30u"
E5J88-B4L3F2-L	GREEN	ORANGE	6u"
E5J88-C4L3F2-L	GREEN	YELLOW	6u"
E5J88-C4L3F4-L	GREEN	YELLOW	30u"

DETACHED LISTS	<div>MM (INCH)</div> <div>← ————— →</div>		<div>Pulse A TECHNITROL COMPANY</div>		FULL RISE ELECTRONIC CO., LTD			
	TOLERANCES EXCEPT AS NOTED				TITLE			
	MM		RJ45 LED JACK, 2x1PORTS					
	.0 ± 0.2	±	DRAWING NO. CE5J3021-LA-01					
	.00 ± 0.15	±						
	.000 ± 0.075	±	/PART NO. SEE TABLE					
	ANGLES ± 0.5							
	<div></div> <div>THIRD ANGLE PROJECTION</div>		DFTO Jeri Chi	DATE 07/13/2006	SIZE A3	REV 0		
SCALE : 5:3		DO NOT SCALE DRAWING		SHEET 1	OF 1			