



Chipsmall Limited consists of a professional team with an average of over 10 year of expertise in the distribution of electronic components. Based in Hongkong, we have already established firm and mutual-benefit business relationships with customers from,Europe,America and south Asia,supplying obsolete and hard-to-find components to meet their specific needs.

With the principle of “Quality Parts,Customers Priority,Honest Operation,and Considerate Service”,our business mainly focus on the distribution of electronic components. Line cards we deal with include Microchip,ALPS,ROHM,Xilinx,Pulse,ON,Everlight and Freescale. Main products comprise IC,Modules,Potentiometer,IC Socket,Relay,Connector.Our parts cover such applications as commercial,industrial, and automotives areas.

We are looking forward to setting up business relationship with you and hope to provide you with the best service and solution. Let us make a better world for our industry!



Contact us

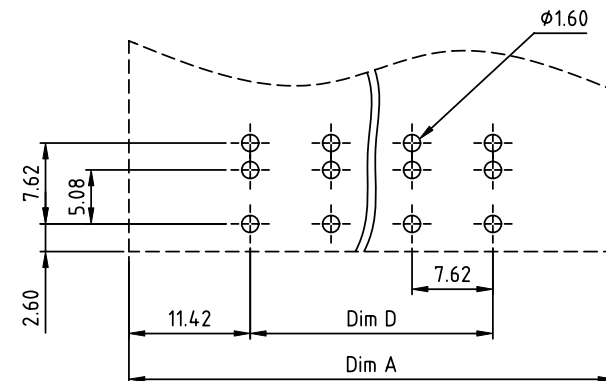
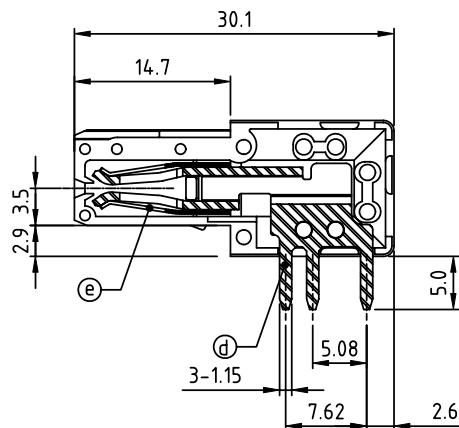
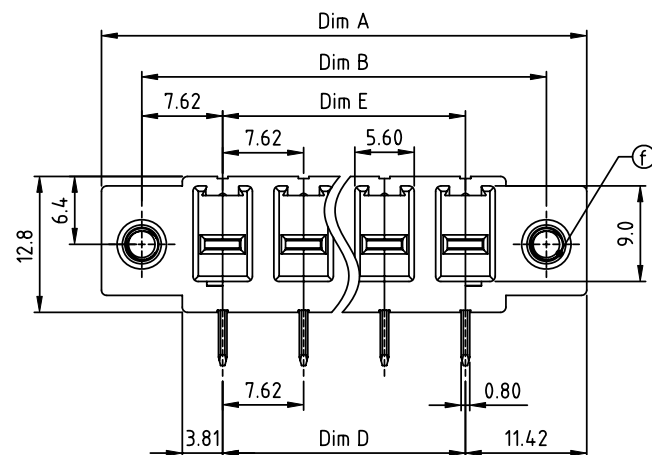
Tel: +86-755-8981 8866 Fax: +86-755-8427 6832

Email & Skype: info@chipsmall.com Web: www.chipsmall.com

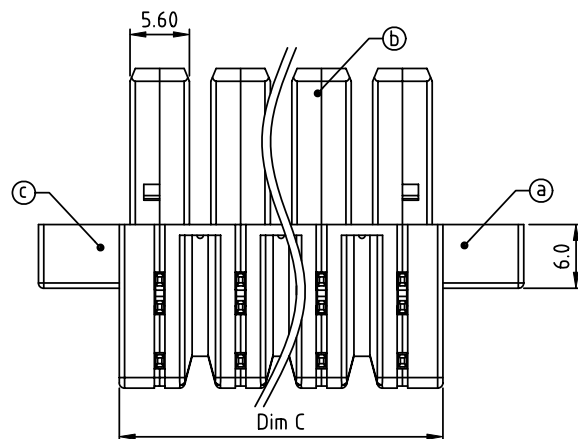
Address: A1208, Overseas Decoration Building, #122 Zhenhua RD., Futian, Shenzhen, China



PRODUCT NUMBER	PITCH
KSxx02x200J0G	7.62 mm



RECOMMENDED P.C.B LAYOUT
TOP VIEW



N=Number of poles

Dim A	$(N+2) \times 7.62$
Dim B	$(N+1) \times 7.62$
Dim C	$N \times 7.62$
Dim D	$(N-1) \times 7.62$
Dim E	$(N-1) \times 7.62$

Dimension

Poles	Tolerance
2P-5P	± 0.30
6P-8P	± 0.35
9P-12P	± 0.40
13P-16P	± 0.50

PART NO.: KSxx02x200J0G

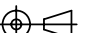
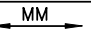

End stackable	No. of poles	Color	RoHS compliant (lead<4%) In copper Alloy
0	2	Black (RAL9005)	
2	3	Red (RAL3001/D)	
3	4	Orange (RAL2011/P)	
4	5	Yellow (RAL1018/A)	
5	6	Green (RAL6018/T)	
6	8	Blue (RAL5015/A)	
8	9	Grey (RAL7035/D)	
9	16	White (RAL1102)	
16		Green (RAL6018/U)	

Material:

- Item (a) Left Cover : Thermoplastic (UL94 - V0)
- Item (b) Middle Body : Thermoplastic (UL94 - V0)
- Item (c) Right Cover : Thermoplastic (UL94 - V0)
- Item (d) Pin: Copper Tin plated
- Item (e) Wire guard: Stainless Steel (ET 7.62)
- Item (f) Flange Nut: Steel, Zinc plated M3 (VC 7.62)

Electrical: cULus

- Voltage rating: 300V
- Current rating: 41A
- Withstanding Voltage: 1.6 KV
- Operating temperature: -40°C to +115°C
- Soldering temperature: 260°C \pm 5°C / 5 Sec
- Safety approval: cULus

mat'l. code				surface	tolerance	projection	product family		
ltr ecn no dr date				ASME Y14.5	ASME Y14.5		TERMINAL BLOCK		
				tolerances unless otherwise specified			title		
				angles	X.±0.5		TERMINAL BLOCK		
				holes	X.X±0.3		PLUGGABLE PLUG, WITH SOLDER PIN, WITH FLANGE		
				X*±1°	X.XX±0.1	scale	RIGHT ANGLE, MOUNTING ONTO THE PCB		
				dr	EVIN ZHONG 050614		dwg no		sheet 1 of 1 size
				enr	EVIN ZHONG 050614		KSxx02x200J0G		A4
				chr	HANKE FENG 050614				
				appd	SHI JUN 050614		type		CUSTOMER Drawing
sheet index	revision	A	1						