



Chipsmall Limited consists of a professional team with an average of over 10 year of expertise in the distribution of electronic components. Based in Hongkong, we have already established firm and mutual-benefit business relationships with customers from,Europe,America and south Asia,supplying obsolete and hard-to-find components to meet their specific needs.

With the principle of "Quality Parts,Customers Priority,Honest Operation,and Considerate Service",our business mainly focus on the distribution of electronic components. Line cards we deal with include Microchip,ALPS,ROHM,Xilinx,Pulse,ON,Everlight and Freescale. Main products comprise IC,Modules,Potentiometer,IC Socket,Relay,Connector.Our parts cover such applications as commercial,industrial, and automotives areas.

We are looking forward to setting up business relationship with you and hope to provide you with the best service and solution. Let us make a better world for our industry!



Contact us

Tel: +86-755-8981 8866 Fax: +86-755-8427 6832

Email & Skype: info@chipsmall.com Web: www.chipsmall.com

Address: A1208, Overseas Decoration Building, #122 Zhenhua RD., Futian, Shenzhen, China



BNC7T-P-C-XX-RA-CA6

GENDER
-P: PLUG

TYPE
-C: CABLE

TERMINATION
-CA6: CCA-6 CABLE (RG-6)

ORIENTATION
-RA: RIGHT ANGLE

PLATING
-GN: GOLD / NICKEL
10µ" Au / 50µ" Ni MIN ON PIN
100µ" Ni MIN ON OUTER CONTACT
(SEE TABLE 1)

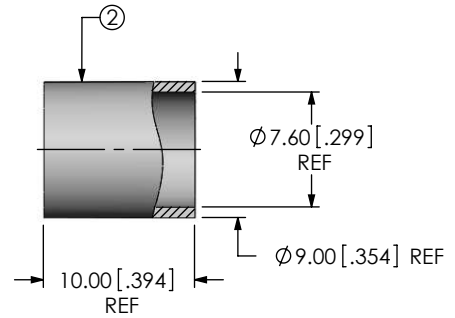
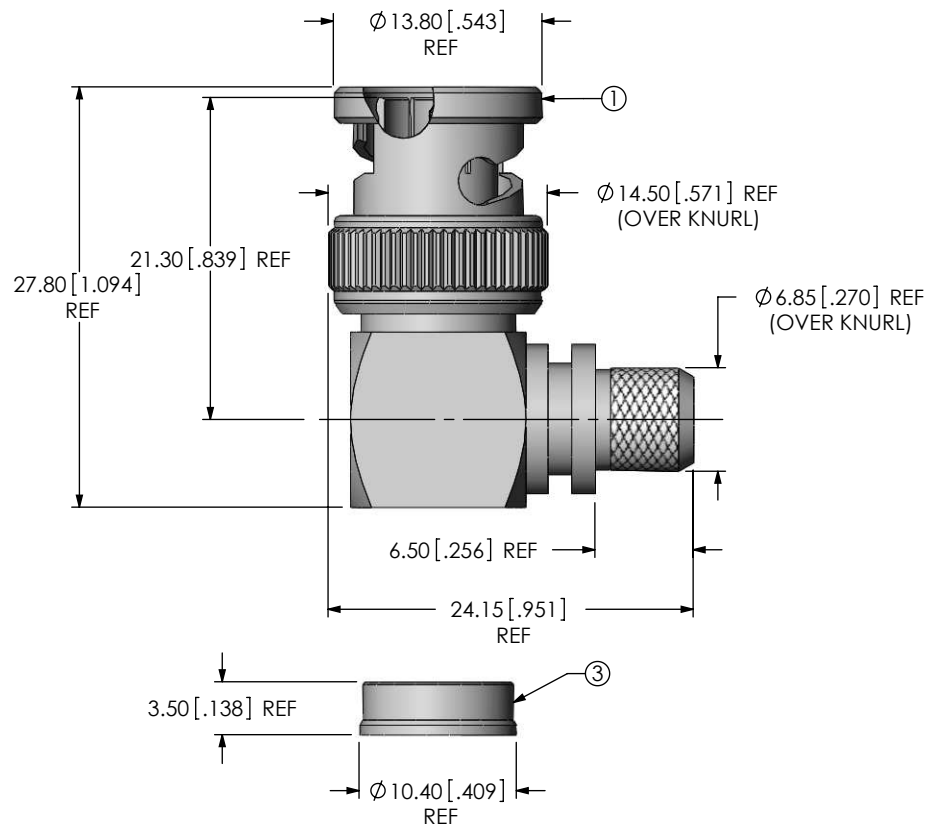



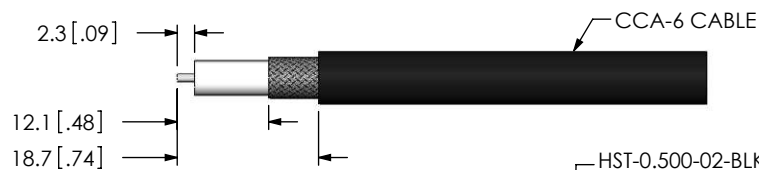
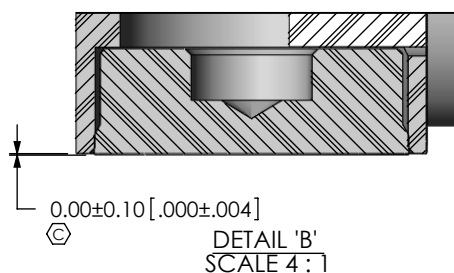
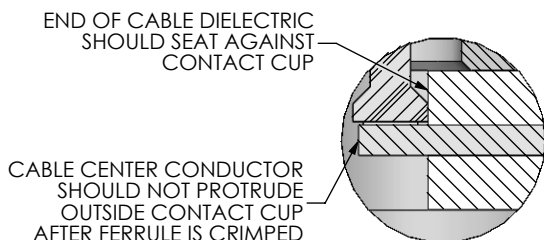
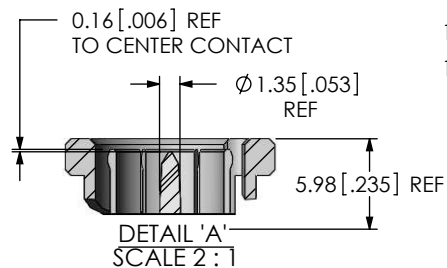
TABLE 1

ITEM	COMPONENT	-GN
1	SUB ASSEMBLY	SUB-BNC7T-P-C-GN-RA-CA6
2	FERRULE	BNC-FER-001-N
3	CAP	BNC7T-P-C-N-RA-CA6-CAP

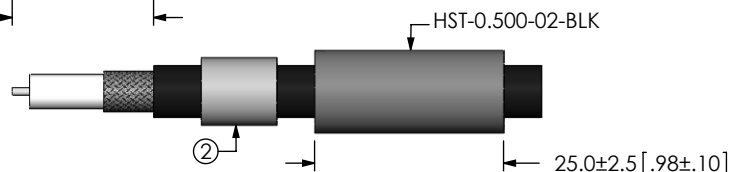
NOTES:

1. REPRESENTS A CRITICAL DIMENSION.
2. PUSHOUT FORCE FOR CENTER CONTACT: 26.69N [6LBS] MIN.
3. SEE SHEET 3 FOR TERMINATION INFORMATION.
4. NOTE DELETED.
5. PRODUCT TO BE PACKAGED PER PACKAGING STANDARD CO-HD-WI-3040-M.
6. RoHS COMPLIANT.
7. NOTE DELETED
8. NOTE DELETED

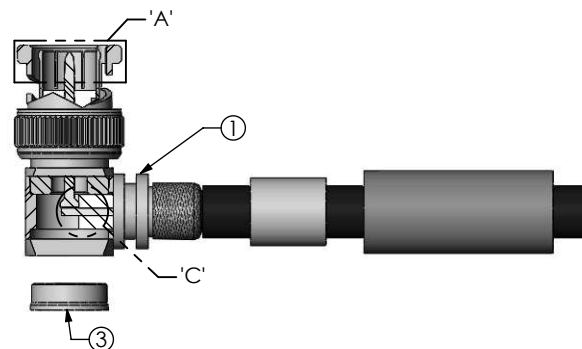
<p>UNLESS OTHERWISE SPECIFIED DIMENSIONS ARE IN MILLIMETERS [INCHES]</p> <p>TOLERANCES ARE:</p> <p>DECIMALS ANGLES</p> <p>.X: ±0.3 [.01] 5 °</p> <p>.XX: ±0.13 [.005]</p> <p>.XXX: ±0.051 [.0020]</p>	<p>PROPRIETARY NOTE</p> <p>THIS DOCUMENT CONTAINS INFORMATION CONFIDENTIAL AND PROPRIETARY TO SAMTEC, INC. AND SHALL NOT BE REPRODUCED OR TRANSFERRED TO OTHER DOCUMENTS OR DISCLOSED TO OTHERS OR USED FOR ANY PURPOSE OTHER THAN THAT WHICH IT WAS OBTAINED WITHOUT THE EXPRESSED WRITTEN CONSENT OF SAMTEC, INC.</p>	 <p>520 PARK EAST BLVD., NEW ALBANY, IN 47150 PHONE: 812-944-6733 FAX: 812-948-5047 e-Mail: info@SAMTEC.com code 55322</p> <p>DESCRIPTION: TRUE 75 OHM, BNC RA RG6 CABLE PLUG</p> <p>DWG. NO. BNC7T-P-C-XX-RA-CA6</p> <p>BY: G. HERMAN 01/09/2009 SHEET 1 OF 2</p>
<p>MATERIAL:</p> <p>SHELL, FERRULE, NUT, CAP: BRASS</p> <p>CONTACT: BRASS</p> <p>DIELECTRIC: PTFE</p> <p>GASKET: SILICONE</p>	<p>DO NOT SCALE DRAWING SHEET SCALE: 2:1</p>	



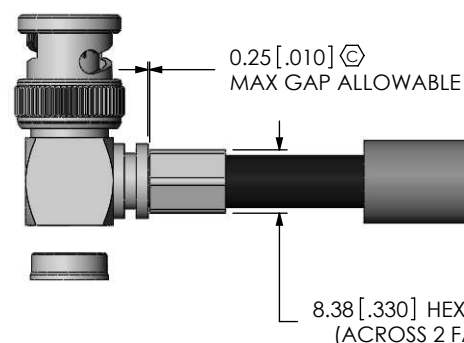
STRIP AND TIN INNER CONDUCTOR



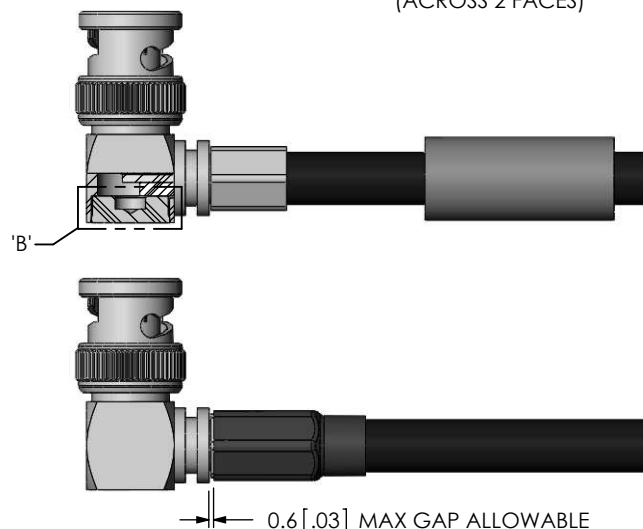
ADD HEAT SHRINK TUBE AND FERRULE



FLAIR BRAID AND ADD SUB-BNC7T-P-C-XX-RA-CA6 CABLE FOIL WRAP TO BE INSERTED INSIDE CABLE BODY



CRIMP FERRULE AND SOLDER SIGNAL PIN (USE RF CRIMP HAND TOOL # CAT-HT-126667-2T OR EQUIVALENT)



INSERT CAP

APPLY HEAT SHRINK TUBING

F:\DWG\MISC\MKTG\BNC7T-P-C-XX-RA-CA6-MKT.SLDDRW

PROPRIETARY NOTE

THIS DOCUMENT CONTAINS INFORMATION CONFIDENTIAL AND PROPRIETARY TO SAMTEC, INC. AND SHALL NOT BE REPRODUCED OR TRANSFERRED TO OTHER DOCUMENTS OR DISCLOSED TO OTHERS OR USED FOR ANY PURPOSE OTHER THAN THAT WHICH IT WAS OBTAINED WITHOUT THE EXPRESSED WRITTEN CONSENT OF SAMTEC, INC.

DO NOT SCALE DRAWING

SHEET SCALE: 1:1

samtec

520 PARK EAST BLVD, NEW ALBANY, IN 47150
PHONE: 812-944-6733 FAX: 812-948-5047
e-Mail info@SAMTEC.com code 55322

DESCRIPTION:
TRUE 75 OHM, BNC RA RG6 CABLE PLUG

DWG. NO.
BNC7T-P-C-XX-RA-CA6

BY: G. HERMAN 01/09/2009 SHEET 2 OF 2