



Chipsmall Limited consists of a professional team with an average of over 10 year of expertise in the distribution of electronic components. Based in Hongkong, we have already established firm and mutual-benefit business relationships with customers from,Europe,America and south Asia,supplying obsolete and hard-to-find components to meet their specific needs.

With the principle of “Quality Parts,Customers Priority,Honest Operation,and Considerate Service”,our business mainly focus on the distribution of electronic components. Line cards we deal with include Microchip,ALPS,ROHM,Xilinx,Pulse,ON,Everlight and Freescale. Main products comprise IC,Modules,Potentiometer,IC Socket,Relay,Connector.Our parts cover such applications as commercial,industrial, and automotives areas.

We are looking forward to setting up business relationship with you and hope to provide you with the best service and solution. Let us make a better world for our industry!



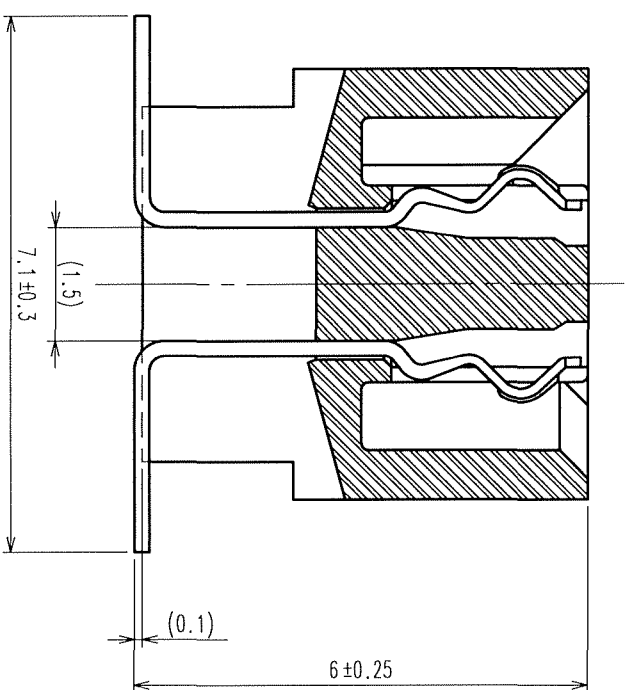
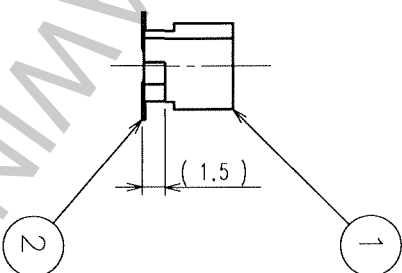
Contact us

Tel: +86-755-8981 8866 Fax: +86-755-8427 6832

Email & Skype: info@chipsmall.com Web: www.chipsmall.com

Address: A1208, Overseas Decoration Building, #122 Zhenhua RD., Futian, Shenzhen, China

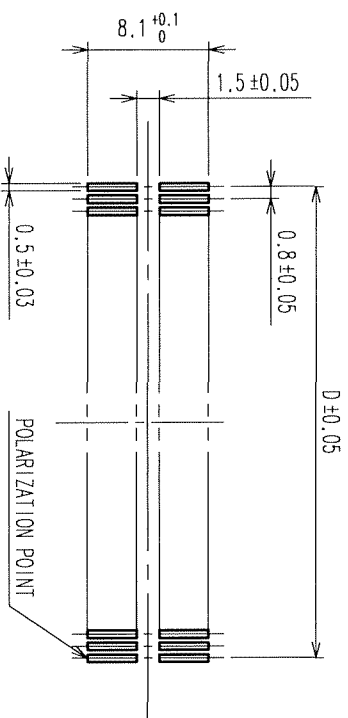




A-A(10:1)

PART No.	CODE No.	<div>4</div>	A	B	C	D
FX6A-20S-0.8SV2(71)	CL576-0321-4-71	20	15.8	12.95	10.9	7.2
FX6A-40S-0.8SV2(71)	CL576-0323-0-71	40	23.8	20.95	18.9	15.2
FX6A-50S-0.8SV2(71)	CL576-0324-2-71	50	27.8	24.95	22.9	19.2
FX6A-60S-0.8SV2(71)	CL576-0325-5-71	60	31.8	28.95	26.9	23.2
FX6A-80S-0.8SV2(71)	CL576-0327-0-71	80	39.8	36.95	34.9	31.2
FX6A-100S-0.8SV2(71)	CL576-0328-3-71	100	47.8	44.95	42.9	39.2

- 1) ∇ MARK SHALL BE OPTIONAL.
- 2) LEAD CO-PLANARITY SHALL BE 0.1 MAX.
- 3) FOR MODIFICATION, ETC., PREVENTIVE HOLE FOR SINK MARK MAY BE ADDED ACCORDING TO CIRCUMSTANCES.
- 4) ∇ NUMBER OF CONTACTS.
- 5) THE DIMENSIONS IN PARENTHESES ARE FOR REFERENCE.

RECOMMENDED P.C.B. LAND PATTERN
(MOUNT SIDE)

						CONTACT AREA: GOLD 0.1 μ m min.	
						LEAD AREA: TIN-PLATING 1 μ m min.	
						UNDER PLATING: NICKEL 2 μ m min.	
1		PPS		LIGHT BROWN (UL94V-0)		2	
NO.		MATERIAL		FINISH, REMARKS		NO.	
CODE NO. (OLD)		DRAWN		DESIGNED		CHECKED	
		A. SUZUKAWA		<i>[Signature]</i>		<i>X. Ogawa H. Okawa</i>	
		'06.09.30		'06.09.30		'06.09.30	
		PART NO.		FX6A-S-O.8SV2(71)			
SCALE		DRAWING NO.					
FREE		EDC3-152950-25					
UNITS		CODE NO.		CL576		1 1	
mm		HRS HIROSE ELECTRIC CO., LTD					