



Chipsmall Limited consists of a professional team with an average of over 10 year of expertise in the distribution of electronic components. Based in Hongkong, we have already established firm and mutual-benefit business relationships with customers from,Europe,America and south Asia,supplying obsolete and hard-to-find components to meet their specific needs.

With the principle of “Quality Parts,Customers Priority,Honest Operation,and Considerate Service”,our business mainly focus on the distribution of electronic components. Line cards we deal with include Microchip,ALPS,ROHM,Xilinx,Pulse,ON,Everlight and Freescale. Main products comprise IC,Modules,Potentiometer,IC Socket,Relay,Connector.Our parts cover such applications as commercial,industrial, and automotives areas.

We are looking forward to setting up business relationship with you and hope to provide you with the best service and solution. Let us make a better world for our industry!



## Contact us

Tel: +86-755-8981 8866 Fax: +86-755-8427 6832

Email & Skype: [info@chipsmall.com](mailto:info@chipsmall.com) Web: [www.chipsmall.com](http://www.chipsmall.com)

Address: A1208, Overseas Decoration Building, #122 Zhenhua RD., Futian, Shenzhen, China



1

2

3

4

LEAD FREE PART NUMBER

DA7WS343A40LF	ø 2.8	ø 3.1
DA7WS343A40LF	ø 2.8	ø 3.1
DA7WS300A30LF	ø 2.0	ø 2.4
DA7WS343A30LF	ø 2.0	ø 2.4
PART NUMBER	ø A	ø B ± 0.1

REFERENCE SPECIFICATIONS

-NFC 93425 (in compliance with HE 507)

PHYSICAL CHARACTERISTICS

-INSULATOR MATERIAL: THERMOPLASTIC / STANDARD MATERIAL

-CONTACT MATERIAL: PHOSPHOR BRONZE(FEMALE SIGNAL CONTACT )

BRASS(PIN SIGNAL CONTACT )

BRASS (POWERS CONTACT)

-ACCESSORIES: BRASS TIN LEAD OVER NICKEL

-SHELLS: STEEL BRIGHT TIN LEAD

ELECTRICAL CHARACTERISTICS

-NOMINAL CURRENT: 7.5A (STANDARD CONDITIONS)

-CONTACT RESISTANCE: <7.3mOhm

-CONTACT/CONTACT : 1000 V

-CONTACT/GROUND : 1200 V

-INSULATION RESISTANCE: 5000 Mohm

ENVIRONMENTAL CHARACTERISTICS

- CLIMATIC CATEGORY: 55/125/21

TEMPERATURE RANGE -55°C TO +125°C

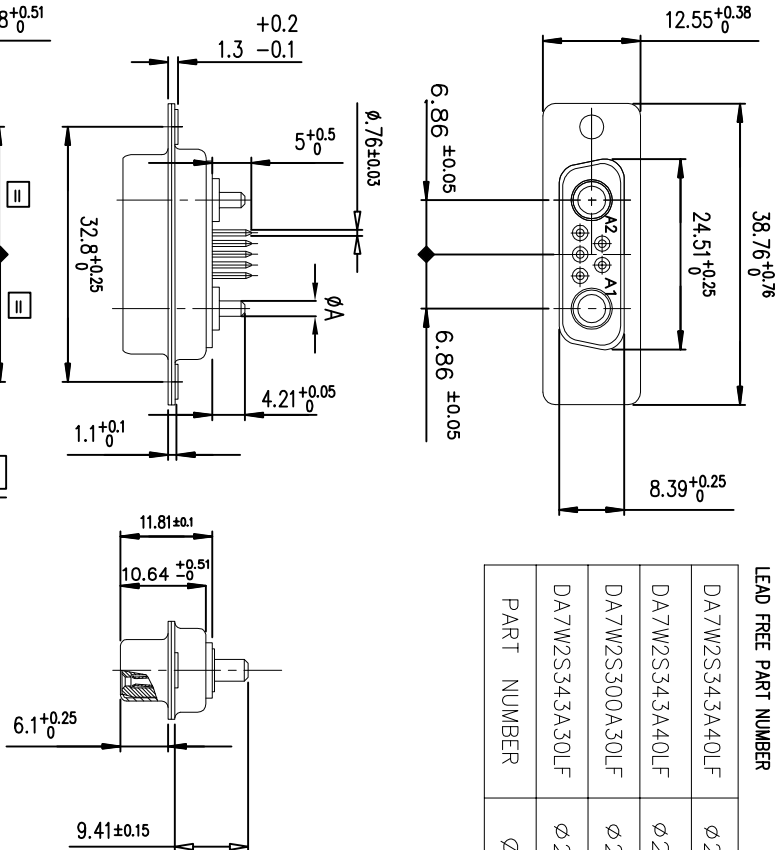
DAMP HEAT STEADY STATE 21 DAYS

SALT SPRAY 24 HOURS

NOTE ROHS INFORMATION

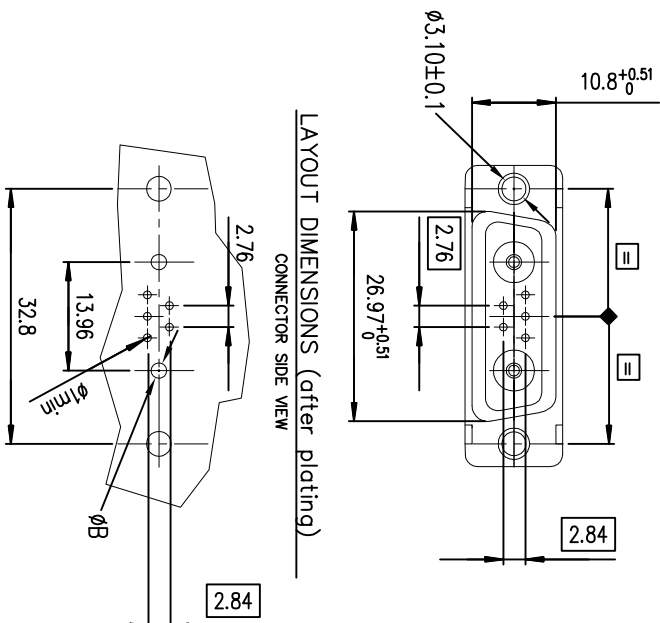
- The "LF" products meet european union Directives and other country regulations as described in GS-22-008.
- The housing will withstand exposure to 260°C peak temperature for 3.5 seconds in a wave solder application with a 1.6mm minimum thick circuit board. See application notes/procedures if they are available.
- Termination plating spec:
  - Signal contacts: Ni + Gold
  - Power contacts: 1.27µm Nickel mini, 2.5 to 7.5 µm Sn (pure bright)
  - Shell plating : 2 to 4µmCu + 3 to 10µmm Sn(pure bright)
  - Accessories: Sn pure bright
- Packaging spec: See GS-14-920

European Views



LAYOUT DIMENSIONS (after plating)

CONNECTOR SIDE VIEW



www.fciconnect.com

surface	ISO 1302	tolerance std	ISO 406 ISO 1101	projection	mm
TOLERANCES UNLESS OTHERWISE SPECIFIED					

rev	ech no	dr	date
A	LS05-0106	MPE	2003/09/19
B	LS06-0097	LGO	2006/07/31
C	FT0-0032	LSA	2010/04/13

Dr	M PESSON	2005/12/01	ANGULAR	0.X	±0.1	size	A3	1.5
Eng	PESSON	2005/12/01	LINEAR	0.XX	±0.1	ECN	FT0-0032	
Chr	LEGARE	2005/12/01	0.XX	±2+				
Appr	LEGARE	2005/12/01	Product family	D-SUB	Spec ref	-		



SOCKET CONNECTOR WITH STR  
CONTACTS AND 2 POWERS 40A

C01-8639-2322  
CUSTOMER sheet 1 of 1