



Chipsmall Limited consists of a professional team with an average of over 10 year of expertise in the distribution of electronic components. Based in Hongkong, we have already established firm and mutual-benefit business relationships with customers from,Europe,America and south Asia,supplying obsolete and hard-to-find components to meet their specific needs.

With the principle of “Quality Parts,Customers Priority,Honest Operation,and Considerate Service”,our business mainly focus on the distribution of electronic components. Line cards we deal with include Microchip,ALPS,ROHM,Xilinx,Pulse,ON,Everlight and Freescale. Main products comprise IC,Modules,Potentiometer,IC Socket,Relay,Connector.Our parts cover such applications as commercial,industrial, and automotives areas.

We are looking forward to setting up business relationship with you and hope to provide you with the best service and solution. Let us make a better world for our industry!



Contact us

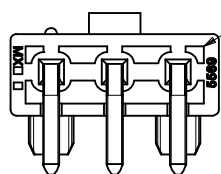
Tel: +86-755-8981 8866 Fax: +86-755-8427 6832

Email & Skype: info@chipsmall.com Web: www.chipsmall.com

Address: A1208, Overseas Decoration Building, #122 Zhenhua RD., Futian, Shenzhen, China

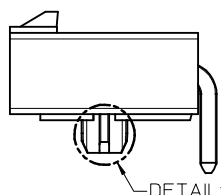


13	12	11	10	9	8	7	6	5	4	3	2	1
PART NUMBER	ENGINEERING NUMBER	MOUNT OPTION	PLATING	MAT'L.	PACKAGING							
39-31-1032	5569-03A4-BL	4	BLANK	BL	BULK							
39-30-3035	5569-03A4	4	BLANK	BLANK								
39-30-4033	5569-03A4GS2	4	15 GOLD	BLANK								
39-30-3037	5569-03A4G	4	30 GOLD	BLANK								
39-30-3032	5569-03A3-210	3	BLANK	210	TRAY							
39-30-3034	5569-03A3G-210	3	30 GOLD									
39-30-3036	5569-03A4-210	4	BLANK		BULK							
39-30-4030	5569-03A4G2-210	4	15 GOLD									
39-30-3038	5569-03A4G-210	4	30 GOLD	210								
NO E.D.P.	5569-03A5G	5	30 GOLD	BLANK								
NO E.D.P.	5569-03A5MS	5	TIN/NICKEL	BLANK								
NO E.D.P.	5569-03A5G-210	5	30 GOLD	210								
39-34-3037	5569-03A5MS-210	5	TIN/NICKEL	210	TRAY							
46999-0700	5569-03A8MS-130	8	TIN/NICKEL	130								

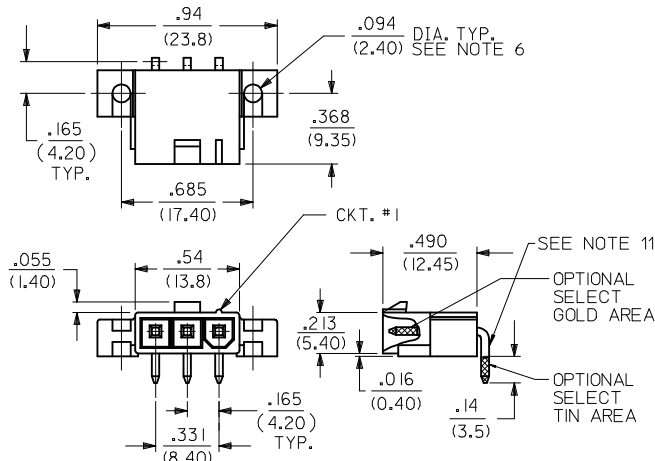


12
4 PLACES

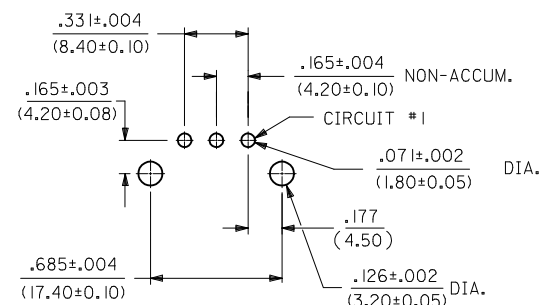
APPLIES TO ALL
PART OPTIONS.



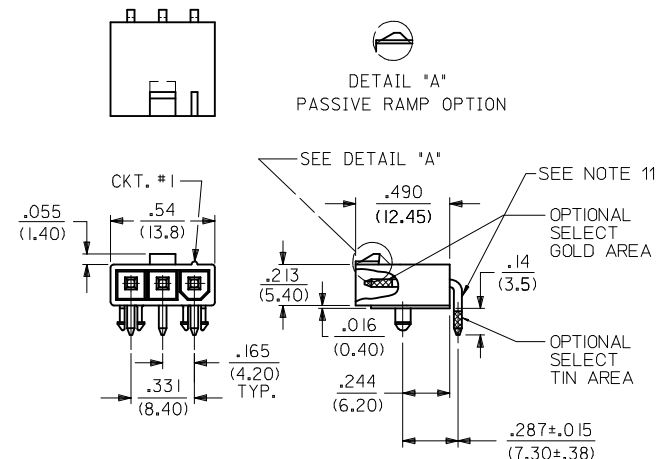
PRESS FIT OPTION



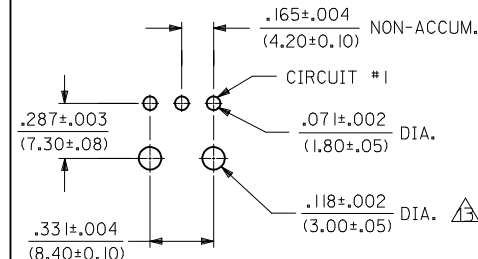
RIGHT ANGLE HEADER
(SCREW MOUNT)



RECOMMENDED HOLE LAYOUT FOR
.070/(1.78) MAX. THICK P.C. BOARD
VIEWED FROM COMPONENT SIDE



RIGHT ANGLE HEADER
(PEG MOUNT)



RECOMMENDED HOLE LAYOUT FOR
.070/(1.78) MAX. THICK P.C. BOARD
VIEWED FROM COMPONENT SIDE

NOTES:

1) HOUSING MATERIAL:

"BLANK" = NYLON 6/6, U.L. 94V-2, COLOR: NATURAL.
130 = LCP, U.L. 94V-0, COLOR: BLACK
210 = NYLON 6/6, U.L. 94V-0, COLOR: NATURAL.
BL = NYLON 6/6, U.L. 94V-2, COLOR: BLACK.
TERMINAL MATERIAL: BRASS, ALLOY

2) TERMINAL PLATING:

"BLANK", MS - .000100/(0.00254) MIN. MATTE TIN OVER
.000050/(0.00127) MIN. NICKEL
G - .000030/(.00076) MIN. SELECT GOLD, .000100/(.00254)
MIN. SELECT MATTE TIN OVER .000050/(.00127) MIN.
NICKEL OVERALL.
G2,GS2 - .000015/(.00038) MIN. SELECT GOLD, .000100/(.0254)
MIN. SELECT MATTE TIN OVER .000050/(.00127) MIN.
NICKEL OVERALL.

3) PRODUCT SPECIFICATION: PS-5556-001

4) PACKAGING SPECIFICATION: BULK PACK PER PK-5569-002 TRAY PACK PER PK-5569-005

5) PART MATES WITH MOLEX RECEPTACLE #5557.

6) PART IS DESIGNED FOR USE WITH #4 OR M3 SELF TAPPING SCREWS.

7) DISCOLORATION IN THE BANDOLIER CARRIER AREA OF THE PIN IS INHERENT TO THE PLATING PROCESS AND IS DUE TO THE MASKING EFFECT OF THE CARRIER. THIS DISCOLORATION IS IN A NON-FUNCTIONAL AREA OF THE PIN AND WILL NOT AFFECT THE PERFORMANCE OF THE HEADER ASSEMBLY.

8) CONNECTORS ARE NOT BE BE MATED OR UNMATED WHILE CIRCUITS ARE LIVE.

9) PARTS ARE NOT DESIGNED FOR CURRENT SHARING.

10) PART CONFORMS TO CLASS "B" REQUIREMENTS OF "COSMETIC SPECIFICATION PS-45499-002."

11) FORMING MARKS ON PINS ARE ACCEPTABLE

△ CORNER CORE-OUTS ARE OPTIONAL AND MAY OR MAY NOT BE PRESENT

△ HOLE TOLERANCE FOR PART NUMBER 46999-0700 IS ±.001 / ±.003

LEGEND

5569-03A***

SERIES NO. _____
CIRCUIT SIZE _____
ASSEMBLY _____
MOUNTING & RAMP OPTION _____
HOUSING MAT'L. OPTION (SEE NOTE 1)
PLATING OPTION (SEE NOTE 2)

*3 = SCREW MOUNT, POSITIVE RAMP
*4 = PEG MOUNT, POSITIVE RAMP
*5 = PEG MOUNT, PASSIVE RAMP
*8 = PRESS FIT PEG, POSITIVE RAMP

ADDED NOTE 13 EC NO: UCP2016-2924 DRAWN:CSLAFTER CHKD:JBELL APPR:FSM/TH REV	DESCRIPTION 2016/01/22 2016/01/22 2016/02/05	QUALITY SYMBOLS ▽=0 ▽=0 ▽=0	GENERAL TOLERANCES (UNLESS SPECIFIED)		DIMENSION STYLE IN/MM		SCALE 10:1	DESIGN UNITS METRIC	THIRD ANGLE PROJECTION	TITLE RIGHT ANGLE HEADER ASSY, 3 CKT., SINGLE ROW, MINI-FIT JR. SERIES molex	DOCUMENT NO. SDA-5569-03A**	SHEET NO. 1 OF 1
			mm	INCH	DRAWN BY GEP	DATE 9/20/90						
			4 PLACES ± ---	± ---	CHECKED BY RJF	DATE 9/20/90						
			3 PLACES ± ---	±.010	APPROVED BY FSM/TH	DATE 2014/05/16						
			2 PLACES ± 0.25	±.015								
			1 PLACE ± 0.38	± ---								
			0 PLACE ± ---	± ---								
			ANGULAR ± 3 °		MATERIAL NO.		DOCUMENT NO.		SHEET NO.			
			DRAFT WHERE APPLICABLE MUST REMAIN WITHIN DIMENSIONS		SEE CHART		THIS DRAWING CONTAINS INFORMATION THAT IS PROPRIETARY TO MOLEX INCORPORATED AND SHOULD NOT BE USED WITHOUT WRITTEN PERMISSION					