



Chipsmall Limited consists of a professional team with an average of over 10 year of expertise in the distribution of electronic components. Based in Hongkong, we have already established firm and mutual-benefit business relationships with customers from,Europe,America and south Asia,supplying obsolete and hard-to-find components to meet their specific needs.

With the principle of “Quality Parts,Customers Priority,Honest Operation,and Considerate Service”,our business mainly focus on the distribution of electronic components. Line cards we deal with include Microchip,ALPS,ROHM,Xilinx,Pulse,ON,Everlight and Freescale. Main products comprise IC,Modules,Potentiometer,IC Socket,Relay,Connector.Our parts cover such applications as commercial,industrial, and automotives areas.

We are looking forward to setting up business relationship with you and hope to provide you with the best service and solution. Let us make a better world for our industry!



Contact us

Tel: +86-755-8981 8866 Fax: +86-755-8427 6832

Email & Skype: info@chipsmall.com Web: www.chipsmall.com

Address: A1208, Overseas Decoration Building, #122 Zhenhua RD., Futian, Shenzhen, China



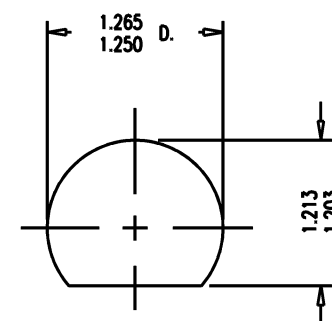
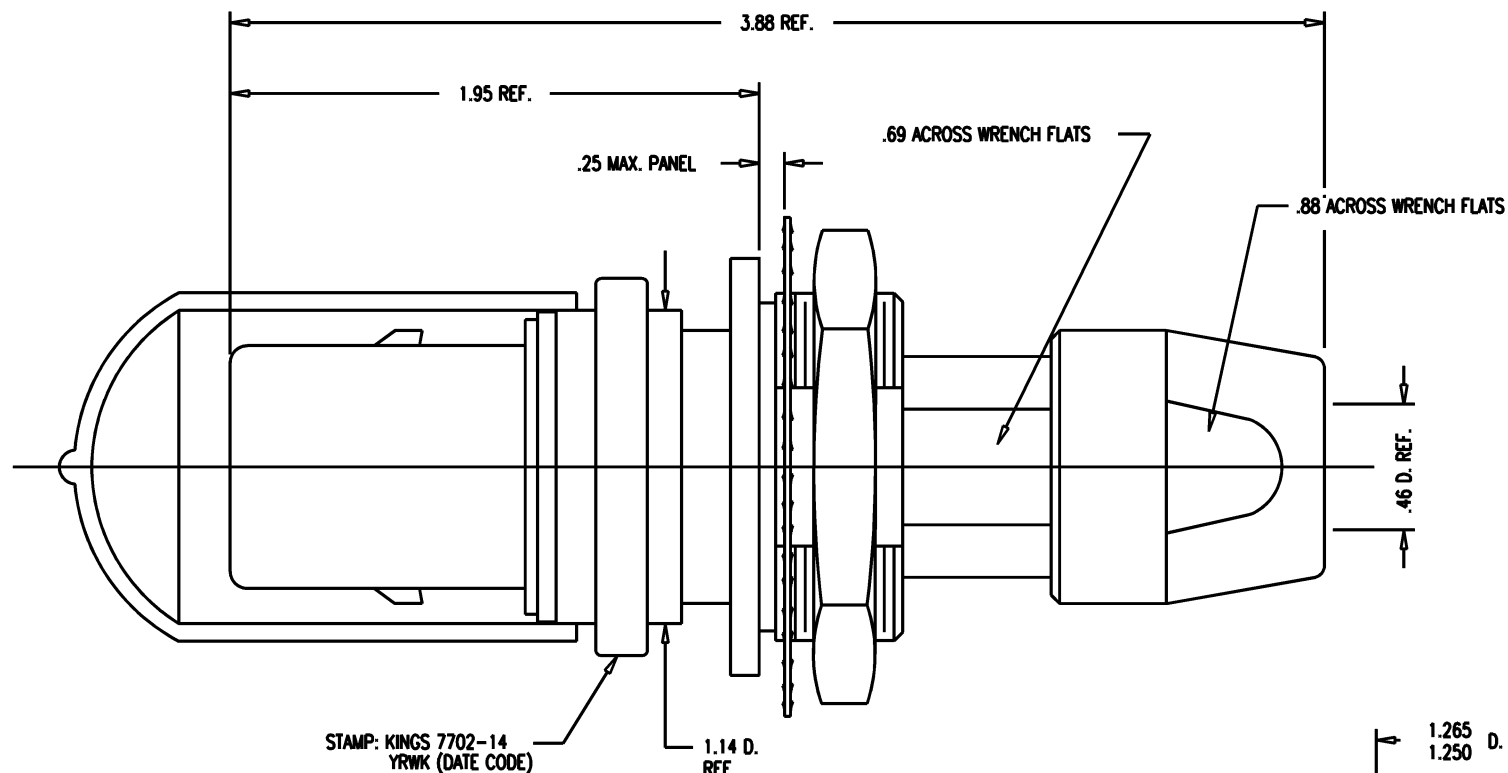
| DASH NO. | M CODE | MADE FROM |
|----------|--------|-----------|
|----------|--------|-----------|

GSD

7702-14

| REVISIONS | |
|-----------|----------------------------|
| ISSUE | CHANGES |
| 0 | ER 36992 KH 06/05/96 |
| 1 | CN 37012 E KH 06/18/96 |
| 2 | CN 38154 C BDH 12/14/00 |

KAM6636



MOUNTING HOLE

GSD

- NOTES:
- FOR USE WITH BELDEN 1859A (79 CABLE GROUP).
 - FOR CABLING INSTRUCTIONS SEE KAI-8011.
 - FOR CRIMPING USE DIE SIZE 2040.
 - MATERIALS:
INSULATORS-TEFLON, ASTM-D-4894
LOCKWASHER-SPRING STEEL, PER ASTM A682
CONDUCTIVE GASKET-CONSIL C 87-10004, 60-70 DUROMETER
GASKETS-SILICONE RUBBER, ZZ-R-765
CAP-VINYL
K-GRIP SLEEVE-COMMERCIAL BRONZE, ASTM-B-135
OUTER CONTACT-PHOSPHOR BRONZE, ASTM-B-103
BODY-BER. COP., ASTM-B-196
ALL OTHER METAL PARTS-BRASS, ASTM-B16
 - FINISHES:
CENTER CONTACT-GOLD PLATE PER MIL-G-45204
LOCKWASHER
NUTS
COLLET
OUTER BODIES
BODY RING
ALL OTHER METAL PARTS-SILVER PLATE PER QQ-S-365
KINGS TARNISH RESISTANT NICKEL FINISH (TR-5)
 - ELECTRICAL CHARACTERISTICS:
NOMINAL IMPEDANCE: 75 OHMS
FREQUENCY RANGE: DC-500 MHZ
VOLTAGE BREAKDOWN: CENTER CONDUCTOR/INNER GROUND: 1500 VRMS
INNER GROUND/OUTER GROUND: 500 VRMS

| | |
|--|----------|
| SCALE 2:1 | |
| APPROX SURFACE AREA | |
| WAS: E-19365 | |
| USED ON | |
| REF: | |
| PL, BKHD, TRI-LOC SERIAL DIGITAL | |
| DRAWN KH | 08/31/96 |
| DESIGN DW | 08/31/96 |
| APPR. | DATE |
| KINGS ELECTRONICS CO., INC. ROCK HILL, SOUTH CAROLINA 29730 | |
| 7702-14 | |