



Chipsmall Limited consists of a professional team with an average of over 10 year of expertise in the distribution of electronic components. Based in Hongkong, we have already established firm and mutual-benefit business relationships with customers from,Europe,America and south Asia,supplying obsolete and hard-to-find components to meet their specific needs.

With the principle of “Quality Parts,Customers Priority,Honest Operation,and Considerate Service”,our business mainly focus on the distribution of electronic components. Line cards we deal with include Microchip,ALPS,ROHM,Xilinx,Pulse,ON,Everlight and Freescale. Main products comprise IC,Modules,Potentiometer,IC Socket,Relay,Connector.Our parts cover such applications as commercial,industrial, and automotives areas.

We are looking forward to setting up business relationship with you and hope to provide you with the best service and solution. Let us make a better world for our industry!



Contact us

Tel: +86-755-8981 8866 Fax: +86-755-8427 6832

Email & Skype: info@chipsmall.com Web: www.chipsmall.com

Address: A1208, Overseas Decoration Building, #122 Zhenhua RD., Futian, Shenzhen, China



RELEASED FOR PUBLICATION OCT , 2001.

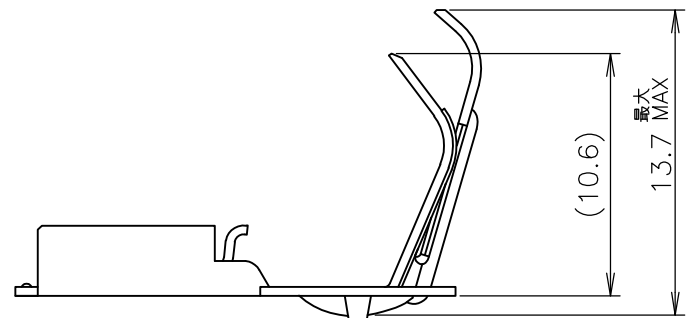
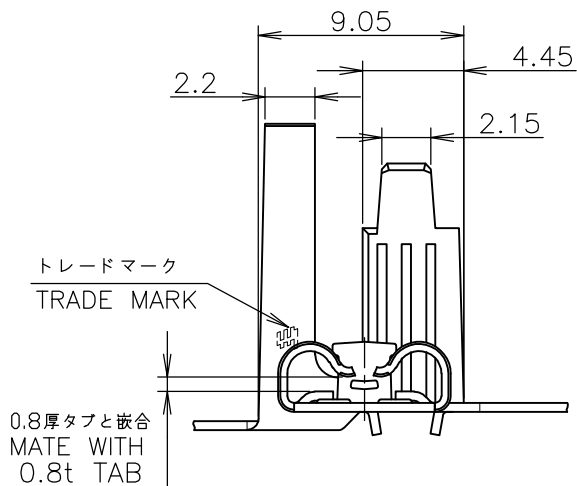
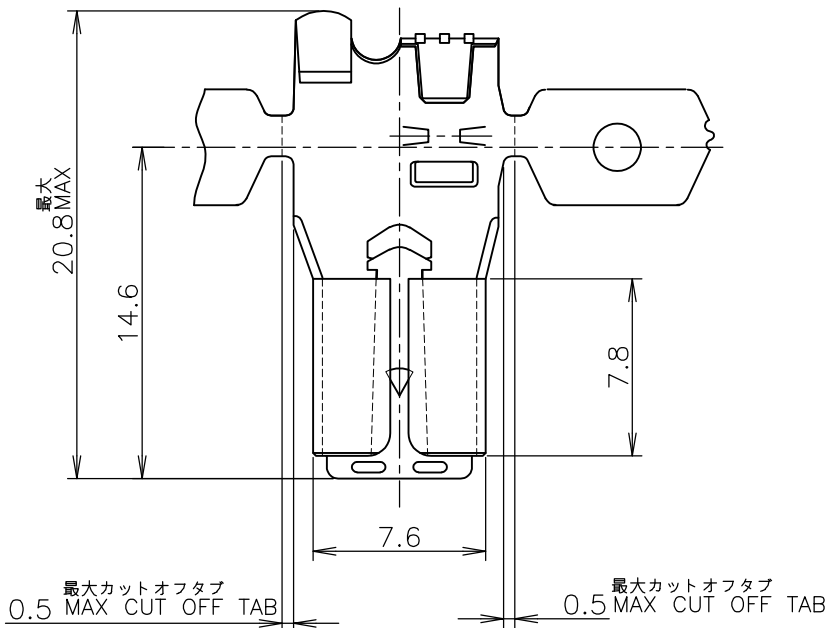
ALL INTERNATIONAL RIGHTS RESERVED.

THIS DRAWING IS UNPUBLISHED.

COPYRIGHT 2001 BY TYCO ELECTRONICS CORPORATION.

LOC	DIST	REVISIONS 変更			DATE	DWN	APVD
P	LTR	DESCRIPTION					
J		E	REDRAWN AND REVISED ECR-10-023816		26NOV2010	T.T	T.M

-1; AS SHOWN



	PRE TIN BRASS 0.4t 錫めっき付 黄銅 0.4t	175178-1
LOOSE PIECE NO. ばら状端子型番	MATERIAL 材料	P/N 型番

WIRE RANGE 抱合電線断面積	AWG #12-#10 3.08~5.37 mm ²	INSULATION DIA 被覆外径	2.8~4.9 mm ϕ
-----------------------	--	------------------------	-------------------

DIMENSIONS: 単位: 耗 mm TOLERANCES UNLESS OTHERWISE SPECIFIED: 一般公差 0 PLC \pm 1 PLC \pm 10 \geq : ± 0.2 2 PLC \pm 30 \geq > 10: ± 0.25 3 PLC \pm 100 \geq > 30: ± 0.3 4 PLC \pm ANGLES $\pm 3^\circ$	DWN T.YAMAMOTO 15OCT2001	MATERIAL 材料 表参照 SEE TABLE	FINISH 仕上
	CHK A.OISHI 15OCT2001	Tyco Electronics Tyco Electronics Corporation Kawasaki, Japan	
	APVD Y.KASHIWA 15OCT2001		
	PRODUCT SPEC 製品規格 108-5254	NAME 名称 250 SERIES FLAG POSITIVE LOCK EX 250 シリーズ 旗型ポジティブロックEX	
	APPLICATION SPEC 取付適用規格 114-5122	SIZE A4	CAGE CODE 00779
	WEIGHT	DRAWING NO 番号 C-175178	RESTRICTED TO
CUSTOMER DRAWING		SCALE 尺度 NTS	SHEET 1 OF 1
		REV E	