



Chipsmall Limited consists of a professional team with an average of over 10 year of expertise in the distribution of electronic components. Based in Hongkong, we have already established firm and mutual-benefit business relationships with customers from,Europe,America and south Asia,supplying obsolete and hard-to-find components to meet their specific needs.

With the principle of “Quality Parts,Customers Priority,Honest Operation,and Considerate Service”,our business mainly focus on the distribution of electronic components. Line cards we deal with include Microchip,ALPS,ROHM,Xilinx,Pulse,ON,Everlight and Freescale. Main products comprise IC,Modules,Potentiometer,IC Socket,Relay,Connector.Our parts cover such applications as commercial,industrial, and automotives areas.

We are looking forward to setting up business relationship with you and hope to provide you with the best service and solution. Let us make a better world for our industry!



## Contact us

Tel: +86-755-8981 8866 Fax: +86-755-8427 6832

Email & Skype: [info@chipsmall.com](mailto:info@chipsmall.com) Web: [www.chipsmall.com](http://www.chipsmall.com)

Address: A1208, Overseas Decoration Building, #122 Zhenhua RD., Futian, Shenzhen, China



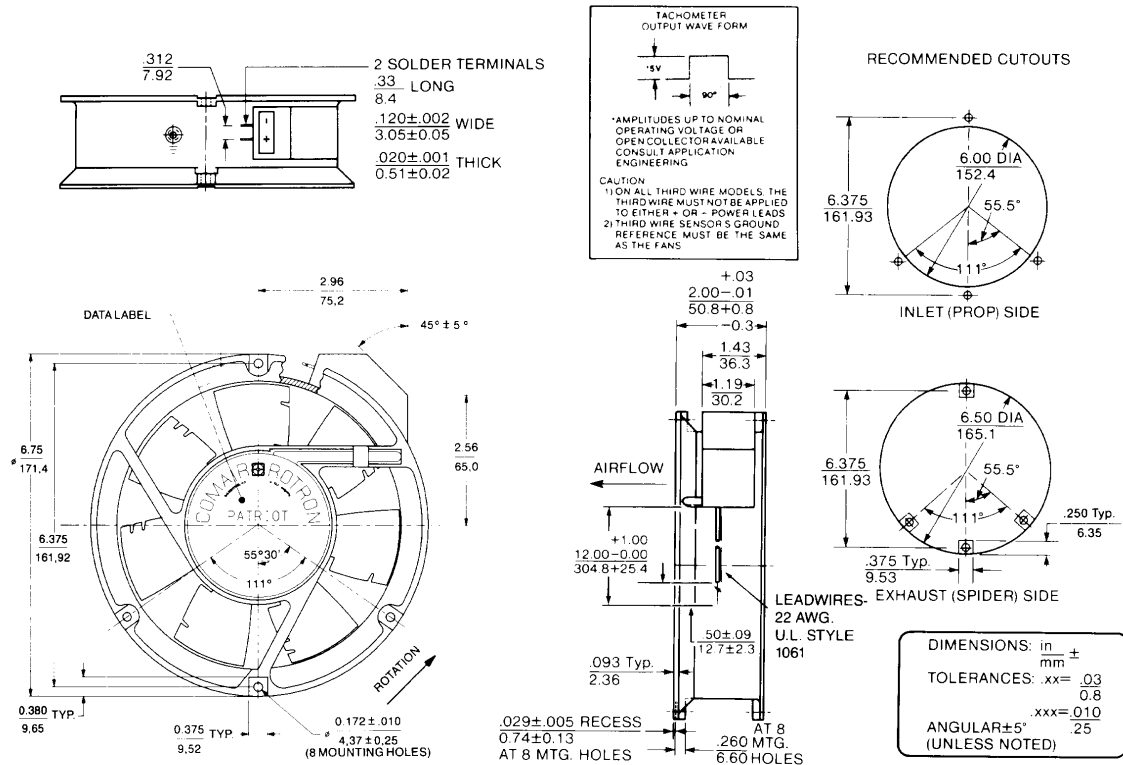
# SPECIFICATIONS



**Model Number:** PQD48B6D3-E2  
**Part Number:** 16002542A

May 02, 2013

## Mechanical Drawing:



Specifications subject to change without notice.

### Motor:

Nominal Voltage = 48 vdc  
 Operating Voltage Range = 36 - 72 vdc  
 Nominal Running Current = 0.45 amps  
 Locked Rotor Current = 1.00 amps  
 Running Power = 22.0 watts  
 Average Speed = 3600 RPM  
 Bearings = Ball  
 Air Flow = 240 CFM  
 Noise = 52.0 dBA

### Construction:

Venturi: Die-Cast Aluminum, Black  
 Propeller: Polycarbonate, Black, UL 94V-0  
 Mounting Holes:  
 4 x M5 x 0.8 on propeller side  
 4 x ø 4.37mm on struts side

### Life Expectancy:

This fan is designed for continuous duty life of 80,000 hours at 40°C(L10).

### Agency Approvals:

UL, CUL, CE

### Additional Features:

Brushless DC Motor  
 Electronic Locked Rotor Protection  
 Polarity Protected  
 Automatic Restart Capability  
 Operating Temperature: -10°C to 70°C  
 Storage Temperature: -40°C to 85°C  
 Envirosield Type 2

### FAN PERFORMANCE SENSOR:

Output: Open Collector  
 Ic: 80 mA max.  
 Vcc: 60 Vdc max.  
 Icbo: 1µA @ 80V  
 Logic Level: High on pass, low on fail  
 Isolated: No  
 Latching: No  
 Delay: 10 ± 4 seconds

**Termination:****HARNES:**

58" ± 1", 22 AWG, UL 1007 (From the edge of the venturi to the tip of the connector)

**SLEEVE TUBE:**

PVC (UL or CSA approved)

Sleeve tube to extend 0.35 inch max beyond the edge of the venturi)

**CONNECTOR:** MOLEX 39-01-2065

**CONTACTS:** Molex 39-00-0059

**COLOR DESIGNATION:**

Pin 1: Black -Power (-)

Pin 2: Blue/White- FPS

Pin 3: Red- Return (+)

Pin 4: NOT USED

Pin 5: Thermistor lead

Pin 6: Thermistor lead

**Thermal Control:**

Fan will operate according to the programmed thermal profile.

Fan Speed Control Settings	
Temperature (°C)	Speed (rpm)
-40	0
15	0
15 ~ 58	1900
> 60	3600

