



Chipsmall Limited consists of a professional team with an average of over 10 year of expertise in the distribution of electronic components. Based in Hongkong, we have already established firm and mutual-benefit business relationships with customers from,Europe,America and south Asia,supplying obsolete and hard-to-find components to meet their specific needs.

With the principle of “Quality Parts,Customers Priority,Honest Operation,and Considerate Service”,our business mainly focus on the distribution of electronic components. Line cards we deal with include Microchip,ALPS,ROHM,Xilinx,Pulse,ON,Everlight and Freescale. Main products comprise IC,Modules,Potentiometer,IC Socket,Relay,Connector.Our parts cover such applications as commercial,industrial, and automotives areas.

We are looking forward to setting up business relationship with you and hope to provide you with the best service and solution. Let us make a better world for our industry!



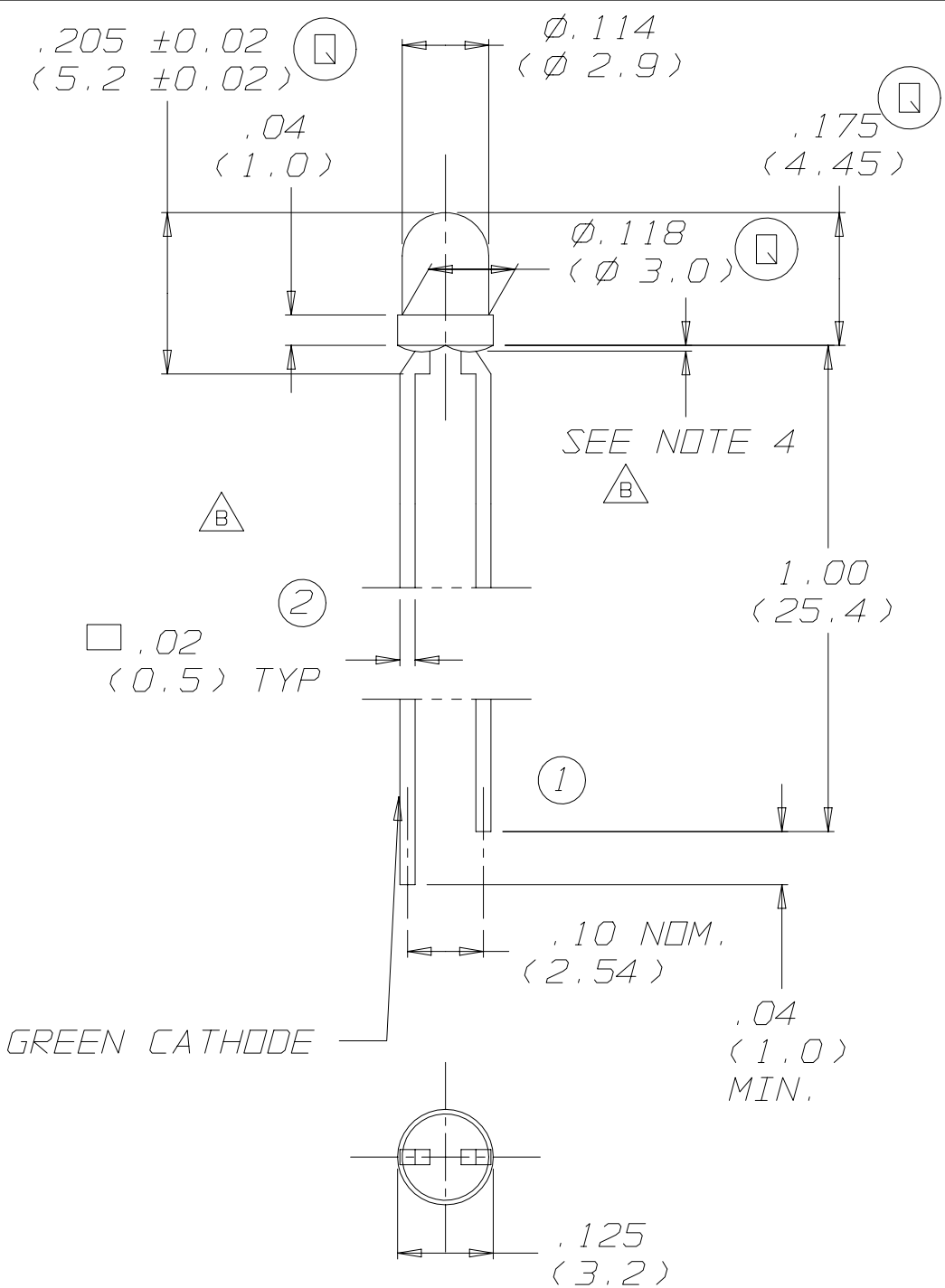
## Contact us

Tel: +86-755-8981 8866 Fax: +86-755-8427 6832

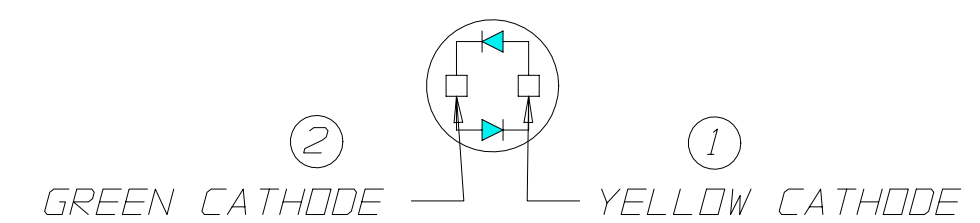
Email & Skype: [info@chipsmall.com](mailto:info@chipsmall.com) Web: [www.chipsmall.com](http://www.chipsmall.com)

Address: A1208, Overseas Decoration Building, #122 Zhenhua RD., Futian, Shenzhen, China





GREEN CATHODE

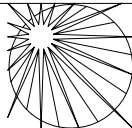


- NOTES:
1. LENS COLOR: WHITE DIFFUSED (Q)
  2. TOLERANCES, UNLESS OTHERWISE SPECIFIED:  $\pm 0.010$  ( $\pm 0.25\text{mm}$ .)
  3. ALL DIMENSIONS ARE IN INCHES (MILLIMETERS).
  4. PROTRUDED RESIN UNDER FLANGE IS .04 (1.0mm) MAX
  5. LEAD SPACING IS MEASURED WHERE THE LEADS EMERGE FROM THE PACKAGE.

ABSOLUTE MAXIMUM RATINGS AT TA=25°C			
PARAMETER	GREEN	YELLOW	UNIT
POWER DISSIPATION	100	60	mW
PEAK FORWARD CURRENT	120	80	mA
CONTINUOUS FORWARD CURRENT	30	20	mA
DERATING LINEAR FROM 50 °C	0.4	0.25	mA/°C
REVERSED VOLTAGE	5	5	V
OPERATING TEMPERATURE RANGE	-55°C TO +100°C		
STORAGE TEMPERATURE RANGE	-55°C TO +100°C		
LEAD SOLDERING TEMPERATURE [1.6mm (0.063in) FROM BODY]	260°C FOR 5 SECONDS		

ELECTRICAL / OPTICAL CHARACTERISTICS AT TA=25°C ( GREEN/YELLOW )					
PARAMETER	MIN.	TYP.	MAX.	UNIT	TEST CONDITION
LUMINOUS INTENSITY	3.7/2.5	12.6/8.7		mcd	IF = 20 mA
VIEWING ANGLE		80		deg	
PEAK EMISSION WAVELENGTH		565/585		nm	
DOMINANT WAVELENGTH		569/588		nm	
SPECTRAL LINE HALF-WIDTH		30/35		nm	
FORWARD VOLTAGE		2.1	2.8	V	IF = 20 mA
REVERSE CURRENT			100/100	µA	VR=5V (GREEN), VR=5V (YELLOW)
CAPACITANCE		35/15		PF	VF=0 f=1MHZ

REV	ECR NO./DESCRIPTION	DATE
A	16196 KB NEW RELEASE	5/7/98
B	21516 RHW SEE NOTE 4 WAS SEE NOTE 3. REMOVED .062 (1.57) MAX DIMENSION.	03/19/02

<div>Q FOR INSPECTION USE ONLY</div> <div>X SPC DOCUMENTATION REQ. (X R CHARTS)</div>		<div>DIST.</div> <div>V/S</div>	
PART NO. 4301F25/27		TITLE	
MODEL NO. -		T-1 BI-COLOR LED	
MOLD NO.		<div>CHICAGO MINIATURE LAMP INC. 147 CENTRAL AVE. HACKENSACK, NJ 07601</div>	
MATERIAL:			
FINISH:		DRAWN K. BARRETT	
TOLERANCE UNLESS OTHERWISE SPECIFIED:		SCALE: 4 : 1	
FRACTION $\pm 1/64$		CHECKED	
INCHES .xx $\pm 0.010$ (0.25)		ENG. APPRV	
ANGLE .xxx $\pm 0.010$ (0.25)		B15162	
ANGLE $\pm 1$ deg.		REV B	

DO NOT SCALE

THIS DWG IS THE PROPERTY OF CHICAGO MINIATURE LAMP INC. AND IS PROPRIETARY IN GENERAL AND IN DETAIL. IT SHALL NOT BE COPIED OR ITS CONTENTS REVEALED TO OUTSIDE PARTIES WITHOUT THE WRITTEN CONSENT OF CHICAGO MINIATURE LAMP INC.