



Chipsmall Limited consists of a professional team with an average of over 10 year of expertise in the distribution of electronic components. Based in Hongkong, we have already established firm and mutual-benefit business relationships with customers from,Europe,America and south Asia,supplying obsolete and hard-to-find components to meet their specific needs.

With the principle of “Quality Parts,Customers Priority,Honest Operation,and Considerate Service”,our business mainly focus on the distribution of electronic components. Line cards we deal with include Microchip,ALPS,ROHM,Xilinx,Pulse,ON,Everlight and Freescale. Main products comprise IC,Modules,Potentiometer,IC Socket,Relay,Connector.Our parts cover such applications as commercial,industrial, and automotives areas.

We are looking forward to setting up business relationship with you and hope to provide you with the best service and solution. Let us make a better world for our industry!



## Contact us

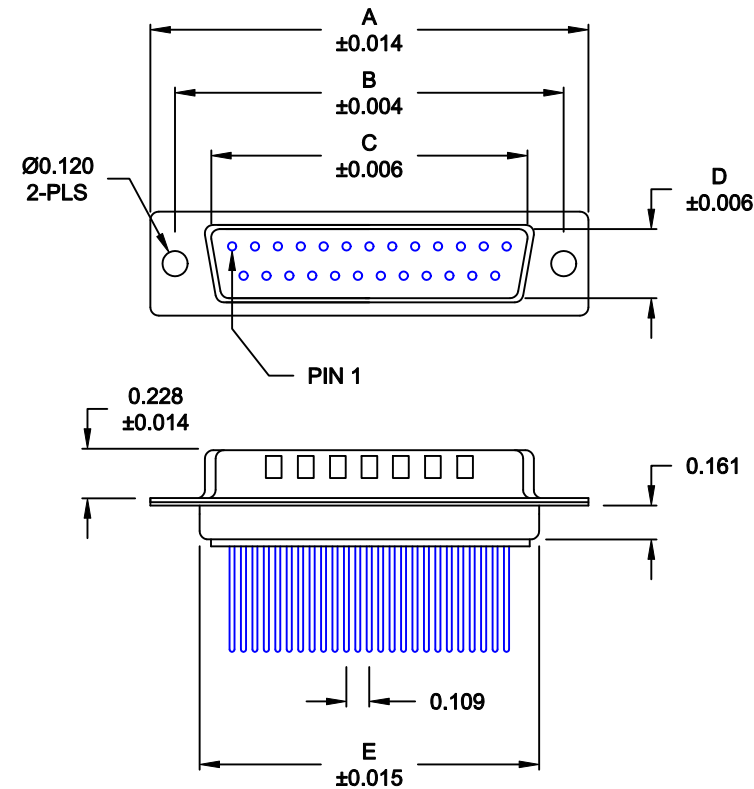
Tel: +86-755-8981 8866 Fax: +86-755-8427 6832

Email & Skype: [info@chipsmall.com](mailto:info@chipsmall.com) Web: [www.chipsmall.com](http://www.chipsmall.com)

Address: A1208, Overseas Decoration Building, #122 Zhenhua RD., Futian, Shenzhen, China



\*\*\*NOTE: INSULATOR DESIGN CHANGE\*\*\*



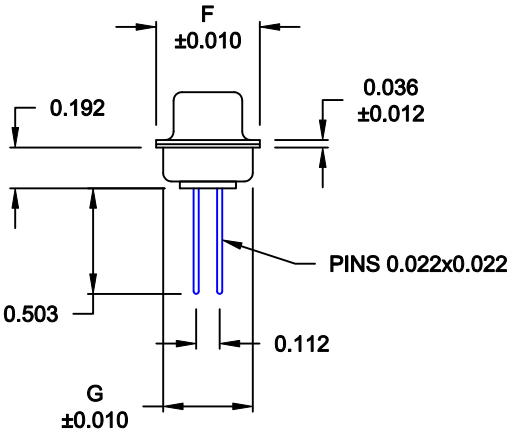
MATERIAL:

SHELL: STEEL, TIN PLATED  
INSULATOR: UL 94V-O RATED, BEIGE PBTP  
PROCESS TEMP.: 260° C  
CONTACT: BRASS

ELECTRICAL:

CURRENT RATING: 5 AMPS  
CONTACT RESISTANCE: 15 mOhms Max.  
INSULATION RESISTANCE: 1,000 MOhms min.  
VOLTAGE: 500VAC FOR 1 MINUTE  
TEMPERATURE: -50° C TO 100° C

RoHS COMPLIANT




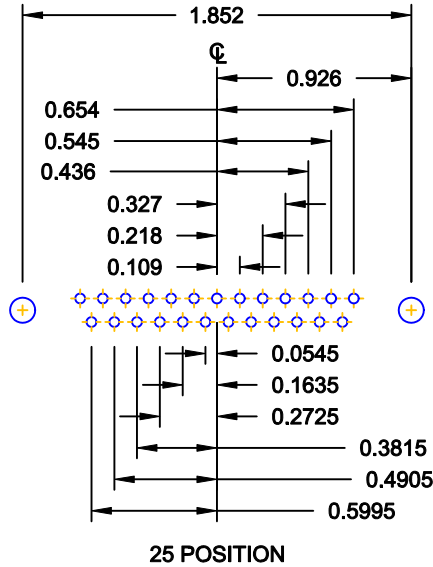
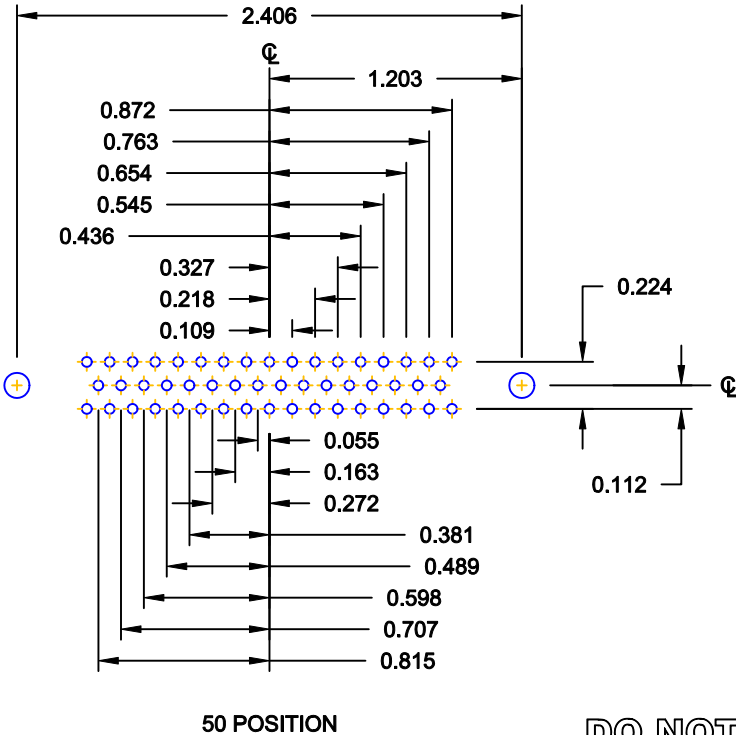
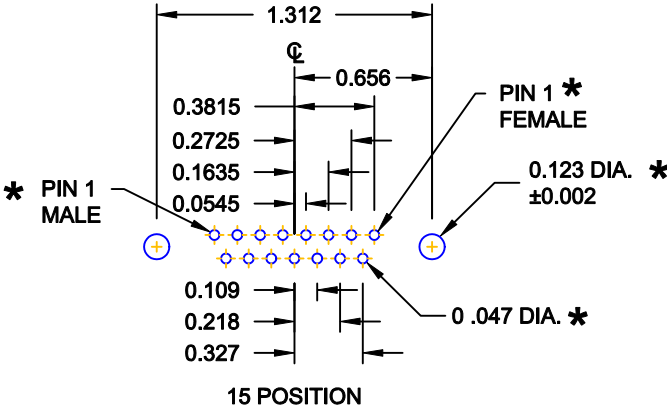
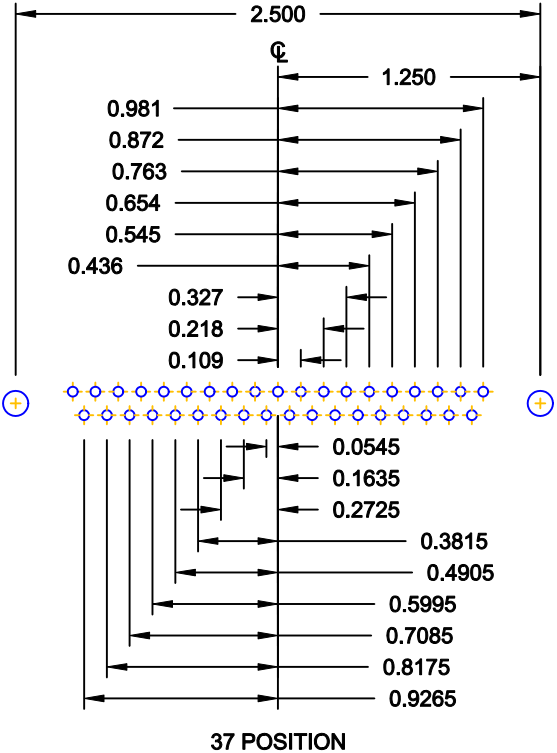
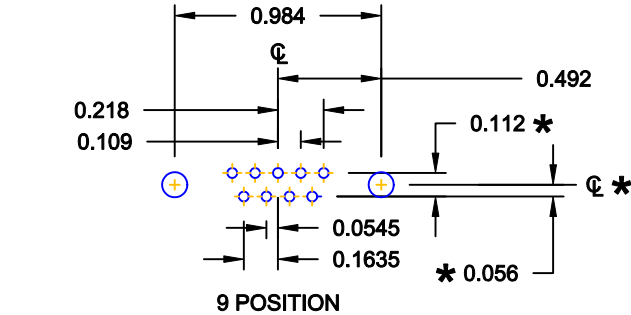
No. OF PINS	DIMENSIONS						
	A	B	C	D	E	F	G
9	1.213	0.984	0.669	0.331	0.760	0.496	0.429
	30.80	24.99	17.00	8.40	19.30	12.60	10.90
15	1.541	1.312	0.996	0.331	1.083	0.496	0.429
	39.15	33.32	25.30	8.40	27.51	12.60	10.90
25	2.088	1.852	1.535	0.331	1.630	0.496	0.429
	53.04	47.04	39.00	8.40	41.40	12.60	10.90
37	2.729	2.500	2.181	0.331	2.276	0.496	0.429
	69.32	63.50	55.40	8.40	57.81	12.60	10.90
50	2.635	2.406	2.079	0.437	2.182	0.598	0.535
	66.93	61.11	52.80	11.10	55.42	15.20	13.60

172-YYY-142RYY1

SERIES  
POSITIONS  
009  
015  
025  
037  
050  
GENDER  
1 = MALE  
TERMINATION  
4 = WIRE WRAP  
SHELL PLATING  
2 = TIN (GROUND INDENTS)  
RoHS COMPLIANT  
HARDWARE OPTIONS  
00 = NO HARDWARE  
01 = .065" CLINCH NUT (BOARD SIDE)  
02 = .250" CLINCH NUT (BOARD SIDE)  
03 = .250" CLINCH NUT (MOUNTING SIDE)  
05 = .237" 4-40 BOARD LOCK  
91 = .237" 4-40 SPACER/ BOARD LOCK  
PLATING OPTIONS  
1 = GOLD FLASH  
2 = 30MICRO-INCH GOLD


DO NOT SCALE FROM DRAWING

	THESE DRAWINGS AND SPECIFICATIONS ARE THE PROPERTY OF NorComp AND SHALL NOT BE REPRODUCED, COPIED OR USED AS THE BASIS FOR THE MANUFACTURE OF SALE OF APPARATUS WITHOUT WRITTEN PERMISSION.	DRAWN: <b>PAM JENKINS</b>		DATE: <b>11-23-05</b>	
		CHECKED:		DATE:	
<b>NorComp</b>	SCALE: <b>1 : 1</b>		SHEET <b>1</b>		OF <b>3</b>
	DWG NO. <b>172-YYY-142RYY1</b>		REV <b>11</b>		



\* TYP. ON ALL SIZES

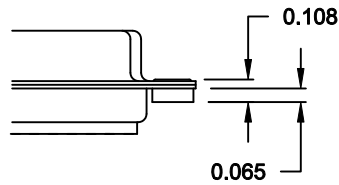
DO NOT SCALE FROM DRAWING

 <b>NorComp</b>	THESE DRAWINGS AND SPECIFICATIONS ARE THE PROPERTY OF NorComp AND SHALL NOT BE REPRODUCED, COPIED OR USED AS THE BASIS FOR THE MANUFACTURE OF SALE OF APPARATUS WITHOUT WRITTEN PERMISSION.	DRAWN: <b>C. SMITH</b>		DATE: <b>03-08-06</b>		
		CHECKED:		DATE:		
		SCALE: <b>FULL</b>		SHEET <b>2</b> OF <b>3</b>		REV <b>11</b>
		DWG NO. <b>172-YYY-142RYY1</b>				

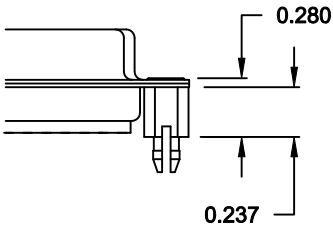
TOLERANCE:  
ALL DIMENSIONS ARE ±0.010

ALL CLINCH-NUTS ARE 4-40 INTERNAL THREADS

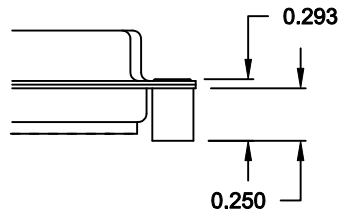
01X ..... 0.065" (BOARD SIDE) - CN1



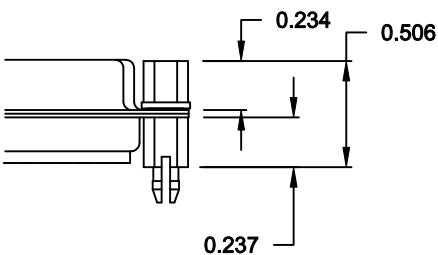
05X ..... 0.237" (BOARD SIDE) - CN10



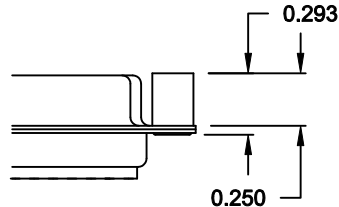
02X ..... 0.250" (BOARD SIDE) - CN2



91X ..... 0.237" (BOARD SIDE) - 0.197 MATING SIDE - CN10/SFSO4404




03X..... 0.250" (MATING SIDE) - CN8



NOTE: 4-40 FEMALE SCREW LOCK IS REMOVABLE

DO NOT SCALE FROM DRAWING

RoHS COMPLIANT

	THESE DRAWINGS AND SPECIFICATIONS ARE THE PROPERTY OF NorComp AND SHALL NOT BE REPRODUCED, COPIED OR USED AS THE BASIS FOR THE MANUFACTURE OF SALE OF APPARATUS WITHOUT WRITTEN PERMISSION.	DRAWN: <b>WAYNE ROBBINS</b>		DATE: <b>11-28-05</b>		
		CHECKED:		DATE:		
<b>NorComp</b>			SCALE:	SHEET <b>3</b>	OF <b>3</b>	REV <b>11</b>
			DWG NO. <b>172-YYY-142RYY1</b>			