



Chipsmall Limited consists of a professional team with an average of over 10 year of expertise in the distribution of electronic components. Based in Hongkong, we have already established firm and mutual-benefit business relationships with customers from,Europe,America and south Asia,supplying obsolete and hard-to-find components to meet their specific needs.

With the principle of “Quality Parts,Customers Priority,Honest Operation,and Considerate Service”,our business mainly focus on the distribution of electronic components. Line cards we deal with include Microchip,ALPS,ROHM,Xilinx,Pulse,ON,Everlight and Freescale. Main products comprise IC,Modules,Potentiometer,IC Socket,Relay,Connector.Our parts cover such applications as commercial,industrial, and automotives areas.

We are looking forward to setting up business relationship with you and hope to provide you with the best service and solution. Let us make a better world for our industry!



## Contact us

Tel: +86-755-8981 8866 Fax: +86-755-8427 6832

Email & Skype: [info@chipsmall.com](mailto:info@chipsmall.com) Web: [www.chipsmall.com](http://www.chipsmall.com)

Address: A1208, Overseas Decoration Building, #122 Zhenhua RD., Futian, Shenzhen, China



## REVISION


S	EC	B	RAY
8/17/2011		ECN-160746	
FRONT VIEW; ADD DIM 245 & 0.40			
REF. ADD REF TO DIM 044, CHG			
CRITICAL 4.5, 8, 12; TOP VIEW; CHG			
0.049 TO 0.050 & 1.950 TO 19.500,			
ADD DIM 123, ADD CRITICAL 2, 3, 13,			
14; DETAIL A; ADD CRITICAL 7, 8;			
DETAIL B; ADD REF TO 034;			
SECTION "C-C"; ADD DIM 0530 -			
.0545, ADD CRITICAL 9, 10, 11; BOM,			
ITEM1: CHG VECTRA 9010 TO LCP			
UL 94 V-0, ITEM2: CHG BRUSH ALLOY			
390HT TO COPPER ALLOY LEADED			
SOLDER, ITEM3: CHG BRUSH ALLOY			
390HT TO POLYIMIDE FILM, ITEM4:			
CHG POLYIMIDE FILM TO			
CONDUCTIVE POLYMER; NOTES:			
ADD NOTES 1, 5, 6 & 7; SHT 2:			
DIM 0955, CHG 050 TO .0500, DEL			
FROM -ALIGNMENT PIN OPTION			
FROM DIM 120 & 0.50; SHT 4: CHG			
BROKEN-OUT SECTION TO SECTION			
"D-D";			

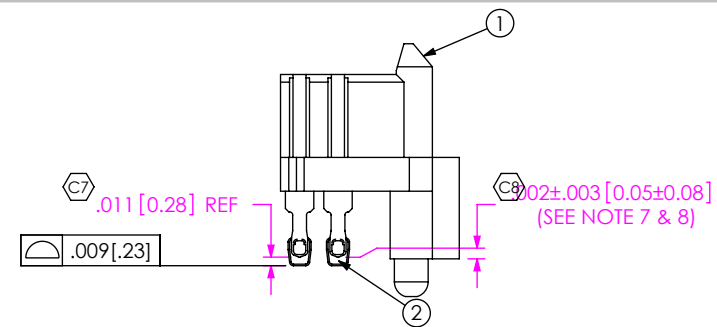
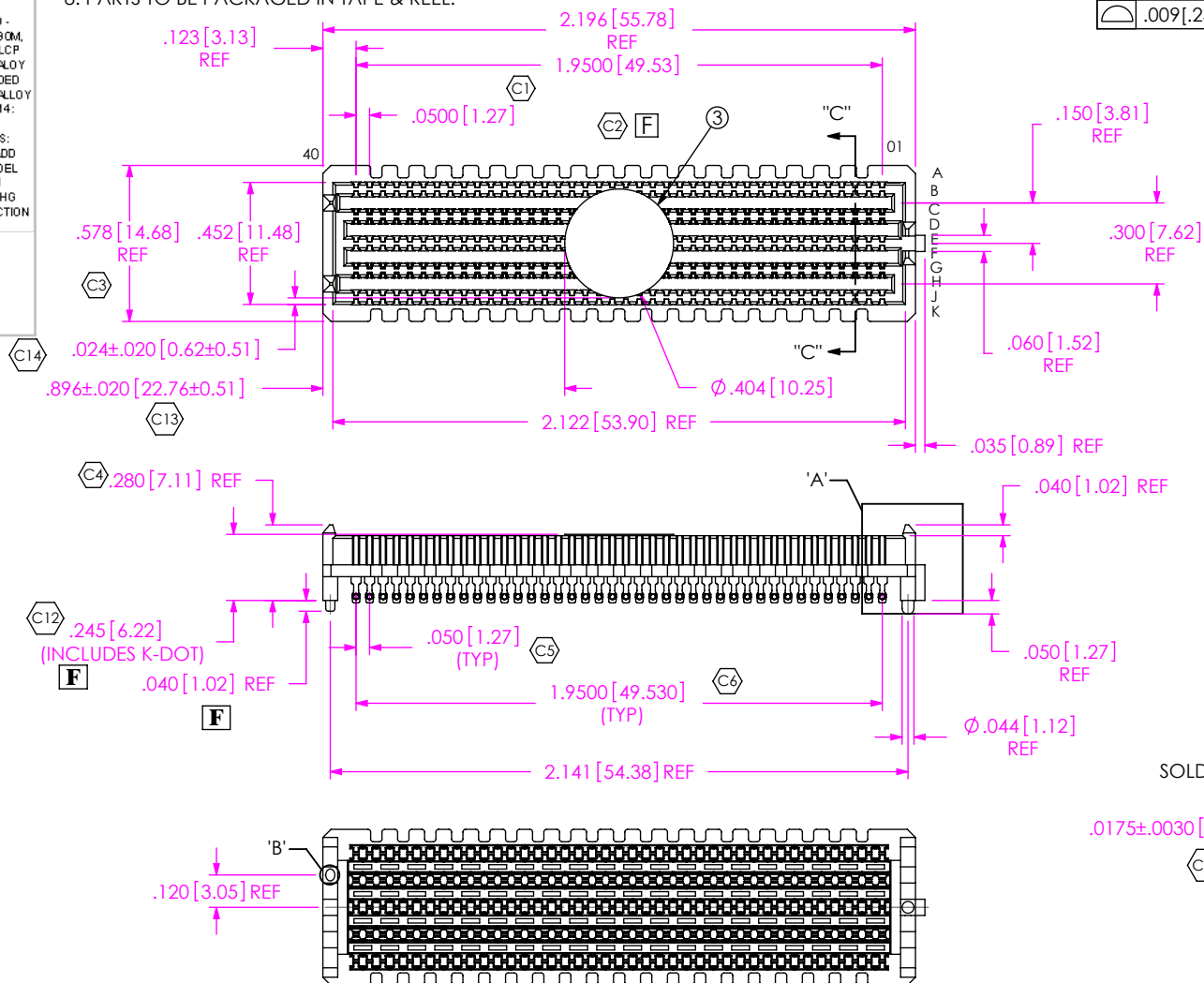
☐ ACCEPTANCE OF DRAWING  
☐ ACCEPTED WITH DEVIATIONS LISTED

COMPANY: \_\_\_\_\_  
CUSTOMER SIGNATURE \_\_\_\_\_  
PRINTED NAME \_\_\_\_\_  
PHONE No: \_\_\_\_\_  
FAX No: \_\_\_\_\_

NOTES: 

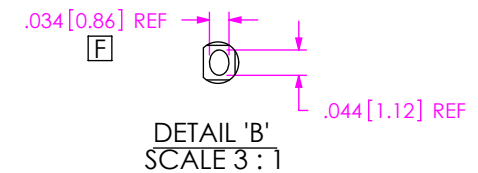
F
---

1. **VITA 57 CONNECTOR.**
2. **FILL ROWS 3, 4, 7, 8 ONLY.**
3.  REPRESENTS A CRITICAL DIMENSION.
4. MINIMUM PUSHOUT FORCE: .75 LBS.
5. ATTACH LABEL "SEAX-0001" TO EACH TAPE & REEL PACKAGE.
6. MAXIMUM ROW TO ROW VARIATION .003[0.08].
7. DIMENSION C8 MUST BE MEASURED IN THE FOUR OUTSIDE CORNERS USING INSPECTION FIXTURE AT-1817-836-1, USE CO-AU-WI-2003-M FOR PROCESS.
8. PARTS TO BE PACKAGED IN TAPE & REEL.

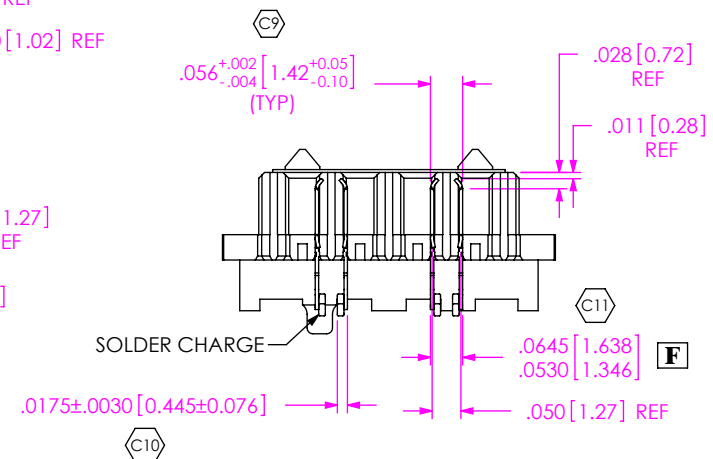


DETAIL 'A'

SCALE 4 : 1



DETAIL 'B'  
SCALE 3 : 1



SECTION "C"-"C"  
SCALE 3 : 1

ITEM NO.	PART NUMBER	QUANTITY	MATERIAL
1	SEAM-40-03.5-10-A	1.0000	LCP UL 94 V0, COLOR: BLACK
2	SUB-T-1M36-03.5-S-1	1.0000	COPPER ALLOY/LEADED SOLDER
3	K-DOT-.404-.500-.005	160.00	POLYIMIDE FILM
4	CT-SFAM033MS	1.0000	CONDUCTIVE POLYMER

UNLESS OTHERWISE SPECIFIED,  
DIMENSIONS ARE IN INCHES.

TOLERANCES ARE:

DECIMALS

XX: +.01[.3]

$$.XXX: \pm .005[.13]$$

.XXX:  $\pm .0020[.051]$

PROPRIETARY NOTE

THIS DOCUMENT CONTAINS INFORMATION  
CONFIDENTIAL AND PROPRIETARY TO  
SAMTEC, INC. AND SHALL NOT BE REPRODUCED  
OR TRANSFERRED TO OTHER DOCUMENTS OR  
DISCLOSED TO OTHERS OR USED FOR ANY  
PURPOSE OTHER THAN THAT WHICH IT WAS  
OBTAINED WITHOUT THE EXPRESSED WRITTEN  
CONSENT OF SAMTEC, INC.

DO NOT SCALE DRAWING

SHEET SCALE: 1.5:1

PLATING:

CONTACT AREA: .000030 GOLD OVER .000050 NICKEL  
REMAINDER: .000200 REF TIN OVER .000050 NICKEL

DESCRIPTION:	
--------------	--

.050 PITCH TERMINAL ARRAY ASSEMBLY

DWG. NO.

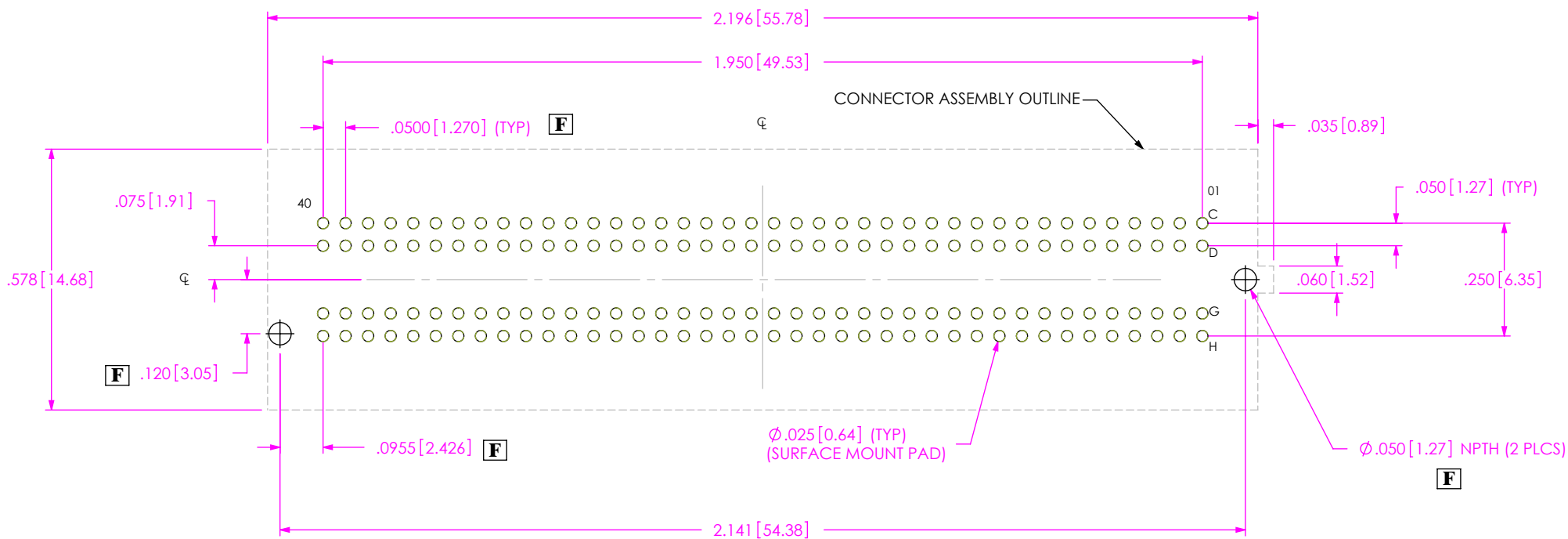
ASP-127797-01

BY: B RAY

08/25/2006

SHEET 1 OF 4

F:\dwg\sw\asp\127000\ASP-127797-01.SLDDRW



ALL DIMENSIONS ARE SYMMETRICAL ABOUT CENTERLINE

## PROPRIETARY NOTE

THIS DOCUMENT CONTAINS INFORMATION  
CONFIDENTIAL AND PROPRIETARY TO  
SAMTEC, INC. AND SHALL NOT BE REPRODUCED  
OR TRANSFERRED TO OTHER DOCUMENTS OR  
DISCLOSED TO OTHERS OR USED FOR ANY  
PURPOSE OTHER THAN THAT WHICH IT WAS  
OBTAINED WITHOUT THE EXPRESSED WRITTEN  
CONSENT OF SAMTEC, INC.

SHEET SCALE: 1.5:1

**samtec**

520 PARK EAST BLVD, NEW ALBANY, IN 47150  
PHONE: 812-944-6733 FAX: 812-948-5047  
e-Mail: info@SAMTEC.com code: 55322

DESCRIPTION:

.050 PITCH TERMINAL ARRAY ASSEMBLY

DWG. NO.

ASP-127797-01

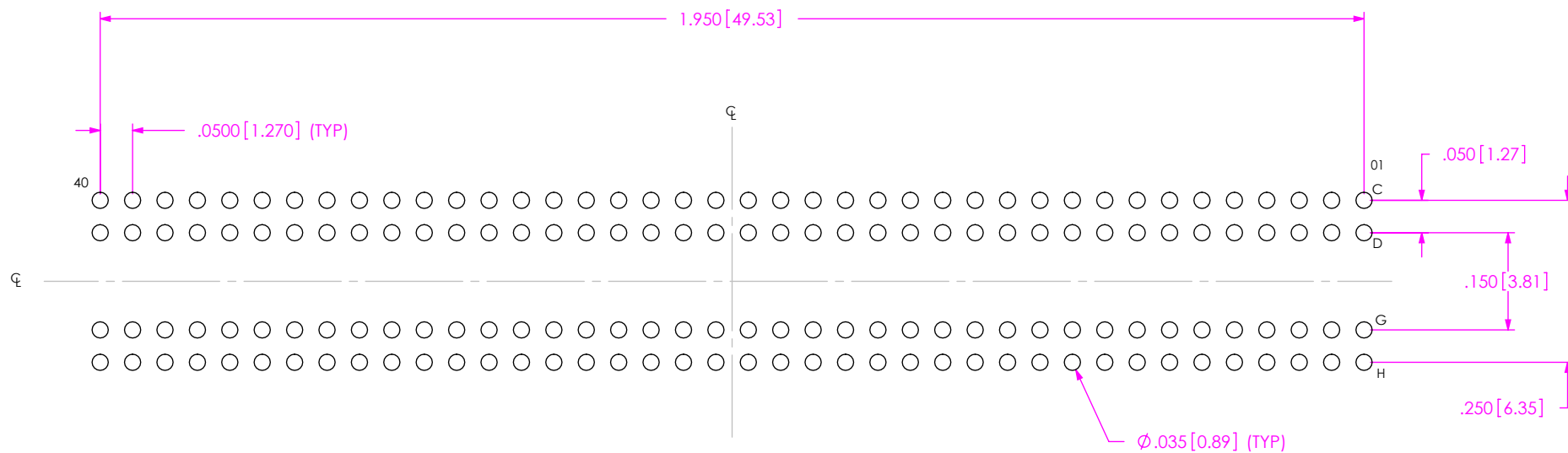
BY: B RAY

08/25/2006

SHEET 2 OF 4

## RECOMMENDED STENCIL LAYOUT FOR ASP-127797-01

NOTE:  
STENCIL TO BE .0060[.152] THICK



ALL DIMENSIONS ARE SYMMETRICAL ABOUT CENTERLINE

THIS DOCUMENT CONTAINS INFORMATION  
CONFIDENTIAL AND PROPRIETARY TO  
SAMTEC, INC. AND SHALL NOT BE REPRODUCED  
OR TRANSFERRED TO OTHER DOCUMENTS OR  
DISCLOSED TO OTHERS OR USED FOR ANY  
PURPOSE OTHER THAN THAT WHICH IT WAS  
OBTAINED WITHOUT THE EXPRESSED WRITTEN  
CONSENT OF SAMTEC, INC.

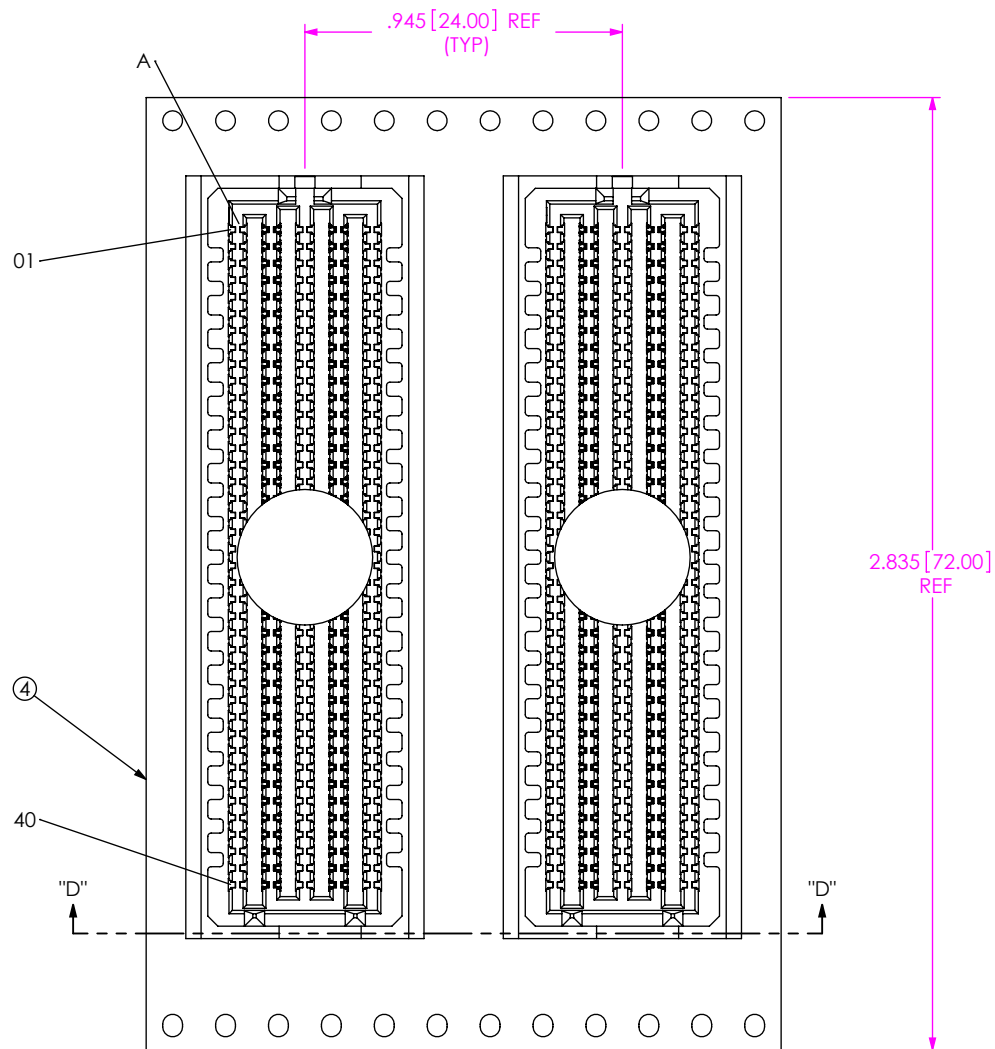
SHEET SCALE: 1.5:1

520 PARK EAST BLVD, NEW ALBANY, IN 47150  
PHONE: 812-944-6733 FAX: 812-948-5047  
e-Mail: [info@SAMTEC.com](mailto:info@SAMTEC.com) code: 55322

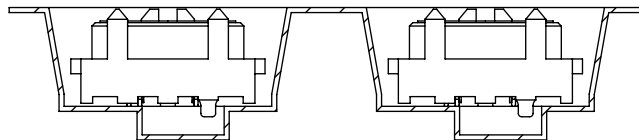
DESCRIPTION:  
**.050 PITCH TERMINAL ARRAY ASSEMBLY**

DWG. NO.	ASP-127797-01
----------	---------------

BY: B RAY	08/25/2006	SHEET 3 OF 4
-----------	------------	--------------



USER DIRECTION OF UN-REELING →  
POCKET NOT DETAILED



**F**

SECTION "D"- "D"  
SCALE 1.75 : 1  
PACKAGING VIEW

#### PROPRIETARY NOTE

THIS DOCUMENT CONTAINS INFORMATION  
CONFIDENTIAL AND PROPRIETARY TO  
SAMTEC, INC. AND SHALL NOT BE REPRODUCED  
OR TRANSFERRED TO OTHER DOCUMENTS OR  
DISCLOSED TO OTHERS OR USED FOR ANY  
PURPOSE OTHER THAN THAT WHICH IT WAS  
OBTAINED WITHOUT THE EXPRESSED WRITTEN  
CONSENT OF SAMTEC, INC.

SHEET SCALE: 1.75:1

**samtec**

520 PARK EAST BLVD, NEW ALBANY, IN 47150  
PHONE: 812-944-6733 FAX: 812-948-5047  
e-Mail: info@SAMTEC.com code: 55322

DESCRIPTION:  
.050 PITCH TERMINAL ARRAY ASSEMBLY

DWG. NO.  
ASP-127797-01

BY: B RAY 08/25/2006 SHEET 4 OF 4