



Chipsmall Limited consists of a professional team with an average of over 10 year of expertise in the distribution of electronic components. Based in Hongkong, we have already established firm and mutual-benefit business relationships with customers from,Europe,America and south Asia,supplying obsolete and hard-to-find components to meet their specific needs.

With the principle of “Quality Parts,Customers Priority,Honest Operation,and Considerate Service”,our business mainly focus on the distribution of electronic components. Line cards we deal with include Microchip,ALPS,ROHM,Xilinx,Pulse,ON,Everlight and Freescale. Main products comprise IC,Modules,Potentiometer,IC Socket,Relay,Connector.Our parts cover such applications as commercial,industrial, and automotives areas.

We are looking forward to setting up business relationship with you and hope to provide you with the best service and solution. Let us make a better world for our industry!



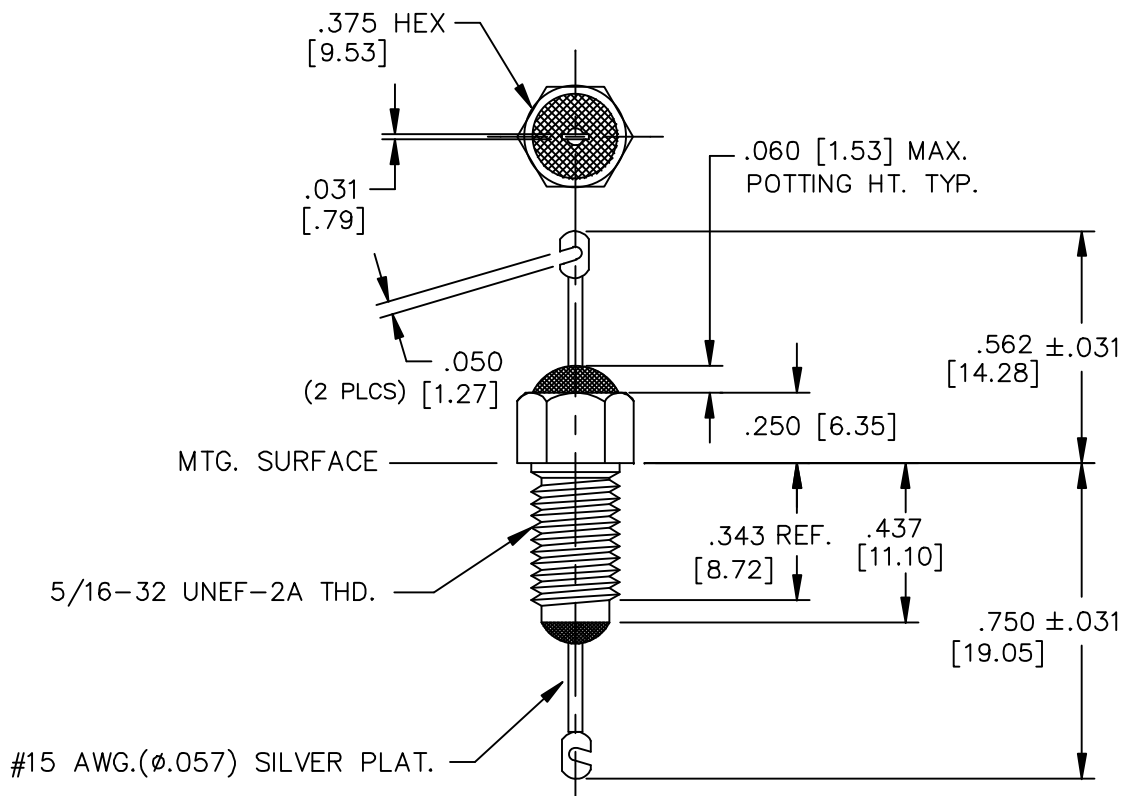
## Contact us

Tel: +86-755-8981 8866 Fax: +86-755-8427 6832

Email & Skype: [info@chipsmall.com](mailto:info@chipsmall.com) Web: [www.chipsmall.com](http://www.chipsmall.com)

Address: A1208, Overseas Decoration Building, #122 Zhenhua RD., Futian, Shenzhen, China





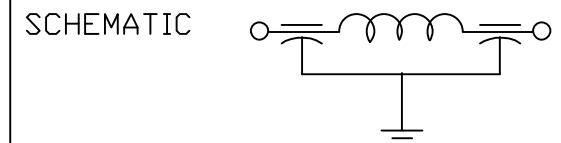
# NOTES:

- HARDWARE IS INCLUDED
- MAXIMUM POTTING TORQUE=7LBS-IN
- SUGGESTED MOUNTING HOLE  $\phi$ .328[8.34]
- PRE FLATTEN/NOTCH DIMENSIONS  
TOP-.542±.010  
BOTTOM-.730±.010


- THIS IS A LEAD FREE PRODUCT.
- MAX REFLOW IS 245°C FOR 5 SEC.



LEAD FINISH: TIN/SILVER	
BUSHING FINISH: SILVER	
CAPACITANCE	2000 pF GMV.
TEMP. RANGE	-55°C TO 125°C
CURRENT	25 AMP MAX.
WORKING VOLTAGE	85°C 1000 VDC MAX. 125°C 700 VDC MAX.
D.C. RESISTANCE	.01ohms MAX.
MIN. I.L. PER MIL-STD-220 AT 25°C NO LOAD	
FREQ. MHz	I.L. (db)
10	5
30	20
100	50
300	55
1 GHz	



PART: FS005 (FAIRVIEW)  
BAG: FS005M (MEXICO)  
1202F-005  
XXX DATE CODE  
XXX QTY./BAG  
(50/ BAG MAX.)

	02	01	00	REV. NO.	UNLESS OTHERWISE SPECIFIED	TOLERANCES UNLESS OTHERWISE SPECIFIED	 ERIE, FAIRVIEW PENNSYLVANIA
	CN 30481-CPD	CN 28460-CPD	CN 18632-CPD	CHANGE NOTICE	DIMENSIONS ARE IN INCHES. [MILLIMETERS] DO NOT SCALE.	Fractions ± 1/64	
						Dec. .xx±	
						Dec. .xxx± .010	
						Angles ±0° 30'	
					© THIRD ANGLE PROJECTION	CODE IDENT. NO. OLSP2	Dwn. KNOWLTON Date 09-18-06 Engr. STRUCHEN Scale NONE
							Description Pi RESIN SEAL FILTER 1202F-005