



Chipsmall Limited consists of a professional team with an average of over 10 year of expertise in the distribution of electronic components. Based in Hongkong, we have already established firm and mutual-benefit business relationships with customers from,Europe,America and south Asia,supplying obsolete and hard-to-find components to meet their specific needs.

With the principle of “Quality Parts,Customers Priority,Honest Operation,and Considerate Service”,our business mainly focus on the distribution of electronic components. Line cards we deal with include Microchip,ALPS,ROHM,Xilinx,Pulse,ON,Everlight and Freescale. Main products comprise IC,Modules,Potentiometer,IC Socket,Relay,Connector.Our parts cover such applications as commercial,industrial, and automotives areas.

We are looking forward to setting up business relationship with you and hope to provide you with the best service and solution. Let us make a better world for our industry!



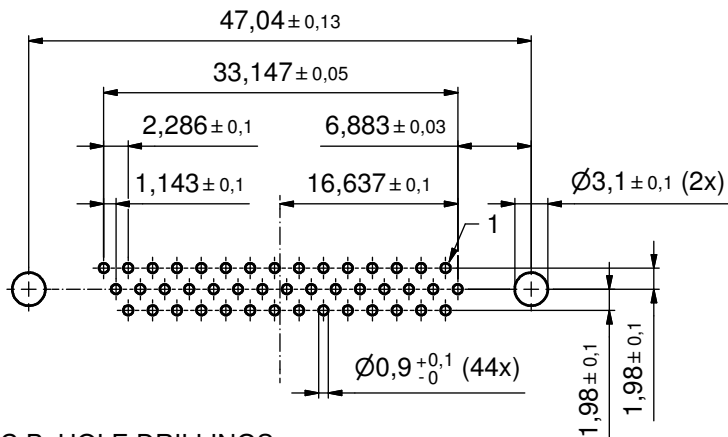
Contact us

Tel: +86-755-8981 8866 Fax: +86-755-8427 6832

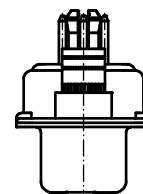
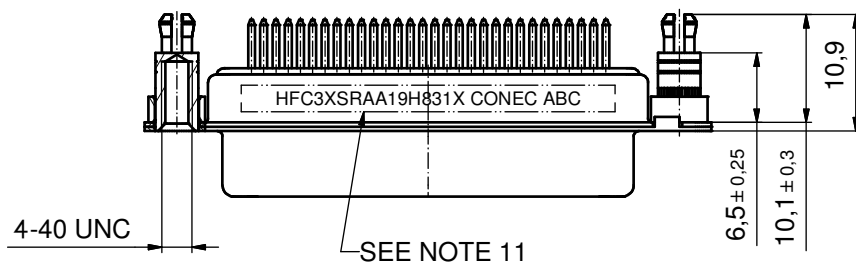
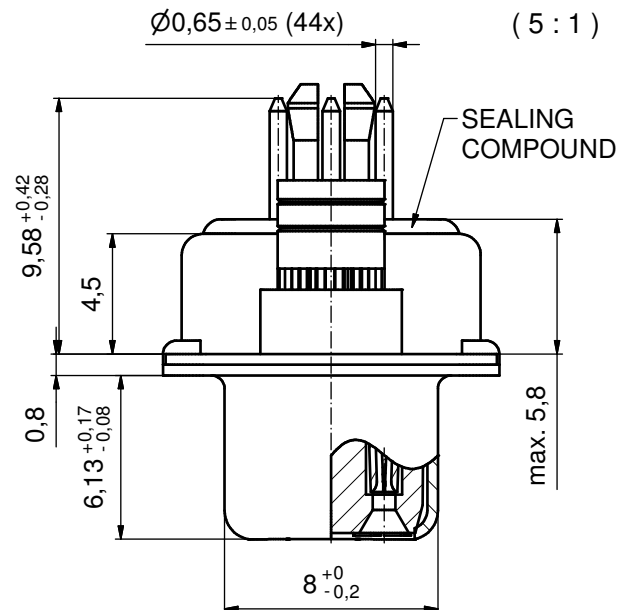
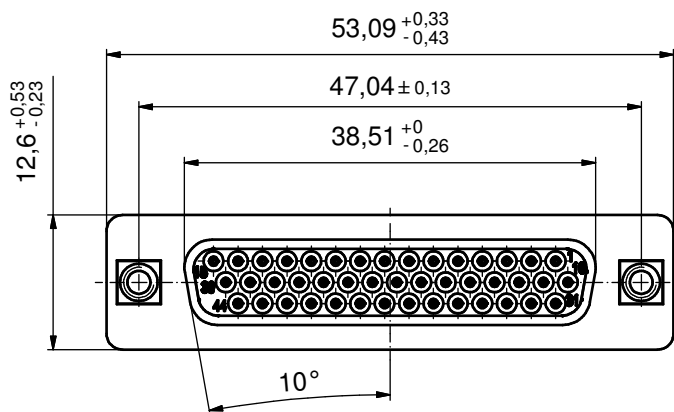
Email & Skype: info@chipsmall.com Web: www.chipsmall.com

Address: A1208, Overseas Decoration Building, #122 Zhenhua RD., Futian, Shenzhen, China



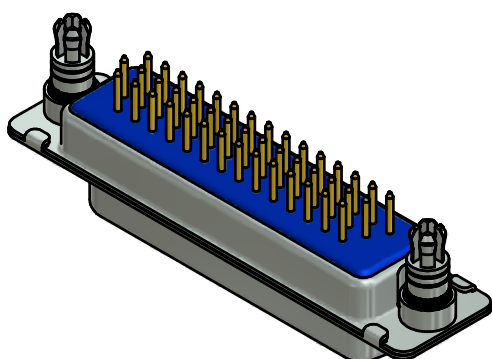


P.C.B. HOLE DRILLINGS
(P.C.B. TOP SIDE)



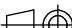

NOTES:

1. RoHS COMPLIANT
2. FOR WAVE SOLDERING (SOLDER BATH TEMPERATURE 260 °C FOR 5 SEC. AND SOLDER PREHEAT 100 °C FOR 30 SEC.)
3. METAL SHELLS: STEEL; min. 315 µm TIN over 40-80 µm NICKEL
4. INSULATOR: HIGH TEMPERATURE PLASTIC UL 94 V-0; BLACK
5. CONTACTS: COPPER ALLOY
PLATING: GOLD FLASH over NICKEL
6. THREADED SPACER CLIPS: COPPER ALLOY; min. 200 µm TIN over 80 µm NICKEL
PCB-HOLE: Ø3,1 ± 0,1; PCB-THICKNESS 2,3mm
7. COLLARS: COPPER ALLOY; min. 200 µm TIN over 80 µm NICKEL
8. SEALING COMPOUND: PUR; BLUE
9. CAPACITANCE: 830pF ± 20%
10. DIELECTRIC WITHSTANDING VOLTAGE: 707 VDC
11. CONNECTOR IS PART MARKED: HFC3XSRAA19H831X CONEC ABC



(b)

Directive 2002/95/EC RoHS compliant

THIS DRAWING MAY NOT BE COPIED OR REPRODUCED IN ANY WAY, AND MAY NOT BE PASSED ON TO A THIRD PARTY WITHOUT WRITTEN PERMISSION. OWNERSHIP AND COPYRIGHT OF CONEC GmbH				tolerance				 dim. in mm		scale: 2:1 (5:1)		material: see notes				
										title:						
									date	name		D-SUB HD C-FILTER FEMALE 44pos. SOLDER PIN STRAIGHT with threaded spacer clip				
									drawn	22.11.10	Herneboel					
									appd.	22.11.10	Koch					
									norm							
									d-old		dwg no:		Inventor 10		DIN-A3 sh: 1	
				1 x b	Ã3958	31.03.2011	K.H.			24K1A1283						
				a	Origin		part no:			HFC3XSRAA19H831X						
rev.	description	date	name													