



Chipsmall Limited consists of a professional team with an average of over 10 year of expertise in the distribution of electronic components. Based in Hongkong, we have already established firm and mutual-benefit business relationships with customers from,Europe,America and south Asia,supplying obsolete and hard-to-find components to meet their specific needs.

With the principle of “Quality Parts,Customers Priority,Honest Operation,and Considerate Service”,our business mainly focus on the distribution of electronic components. Line cards we deal with include Microchip,ALPS,ROHM,Xilinx,Pulse,ON,Everlight and Freescale. Main products comprise IC,Modules,Potentiometer,IC Socket,Relay,Connector.Our parts cover such applications as commercial,industrial, and automotives areas.

We are looking forward to setting up business relationship with you and hope to provide you with the best service and solution. Let us make a better world for our industry!



Contact us

Tel: +86-755-8981 8866 Fax: +86-755-8427 6832

Email & Skype: info@chipsmall.com Web: www.chipsmall.com

Address: A1208, Overseas Decoration Building, #122 Zhenhua RD., Futian, Shenzhen, China

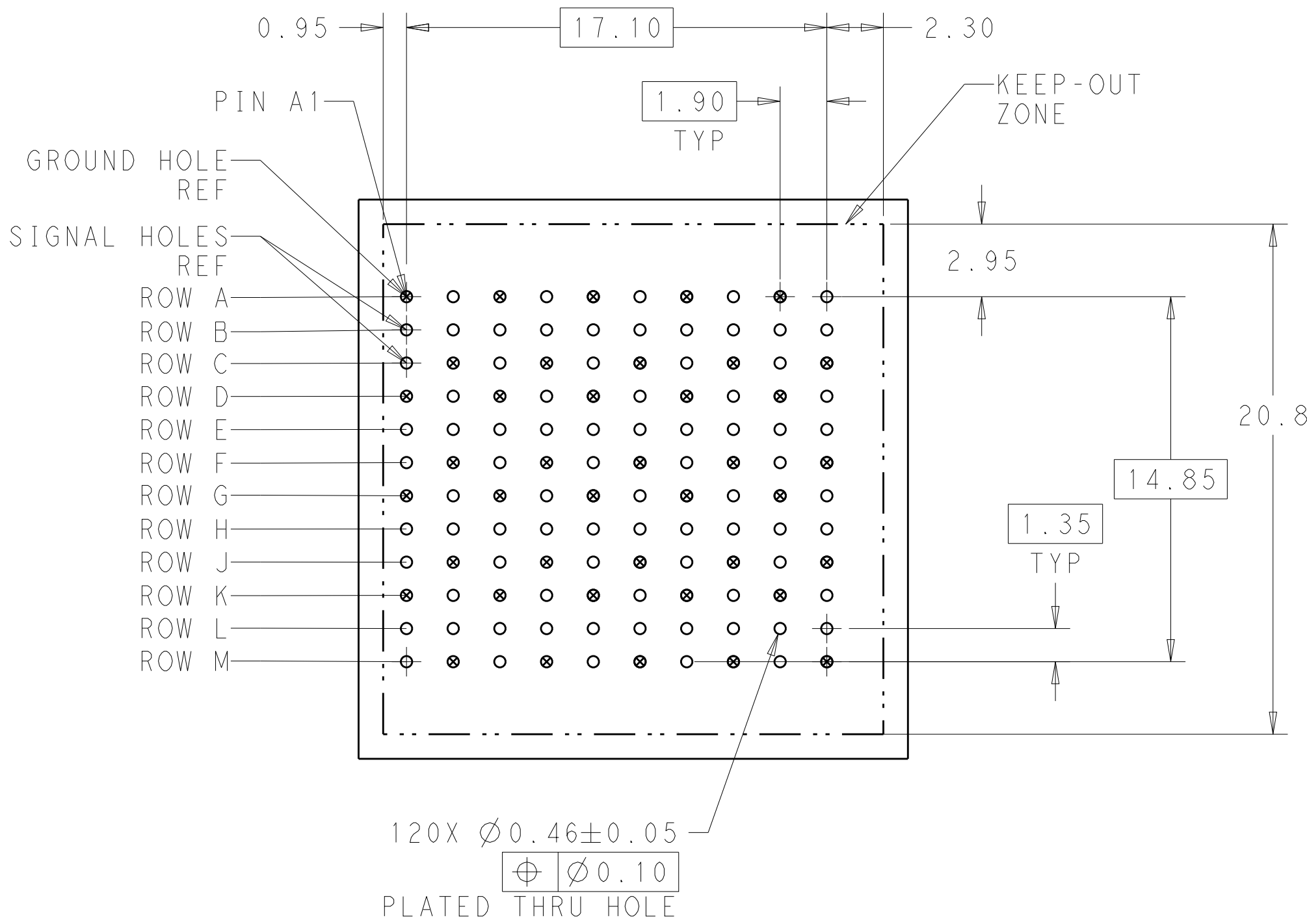
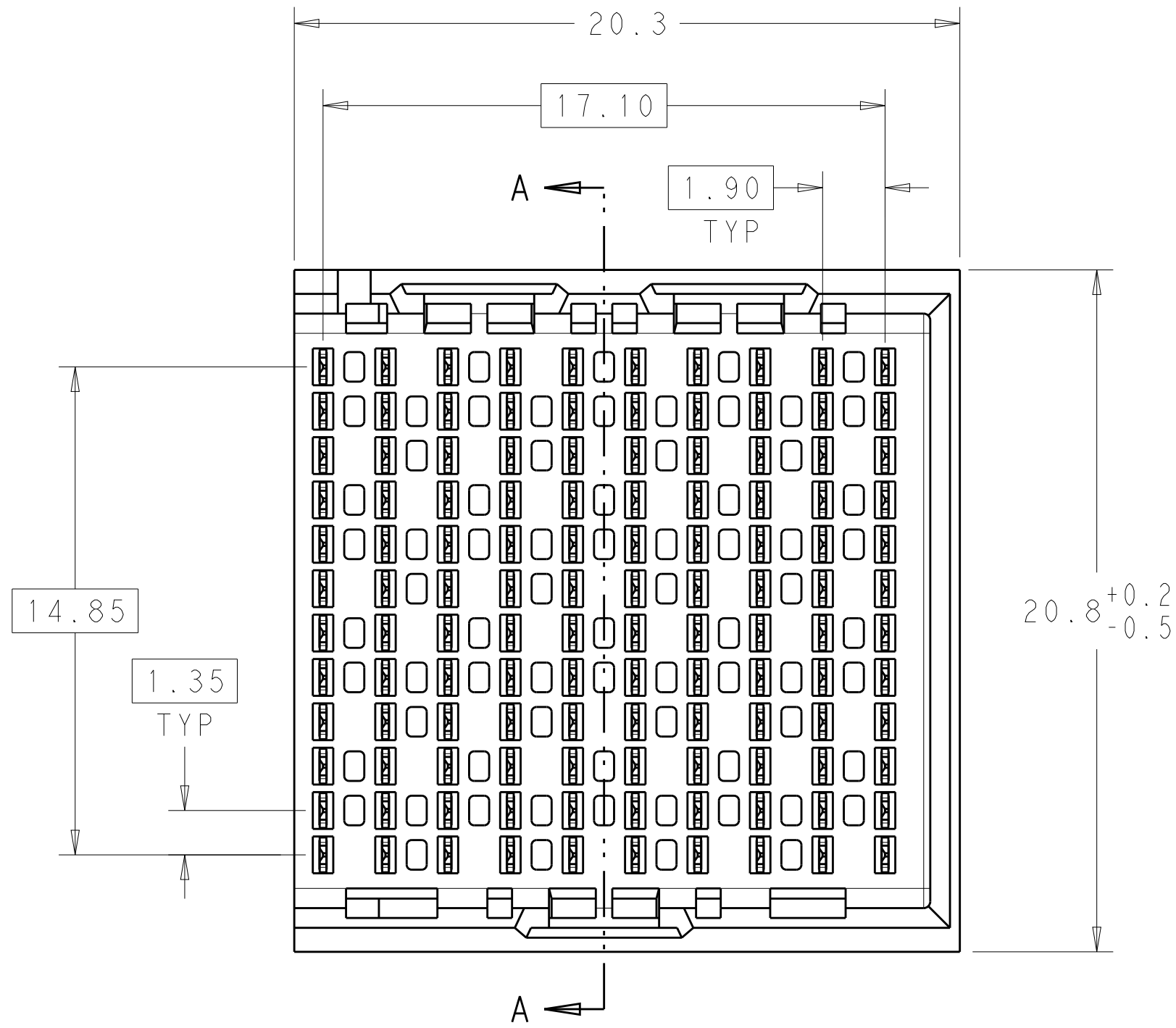
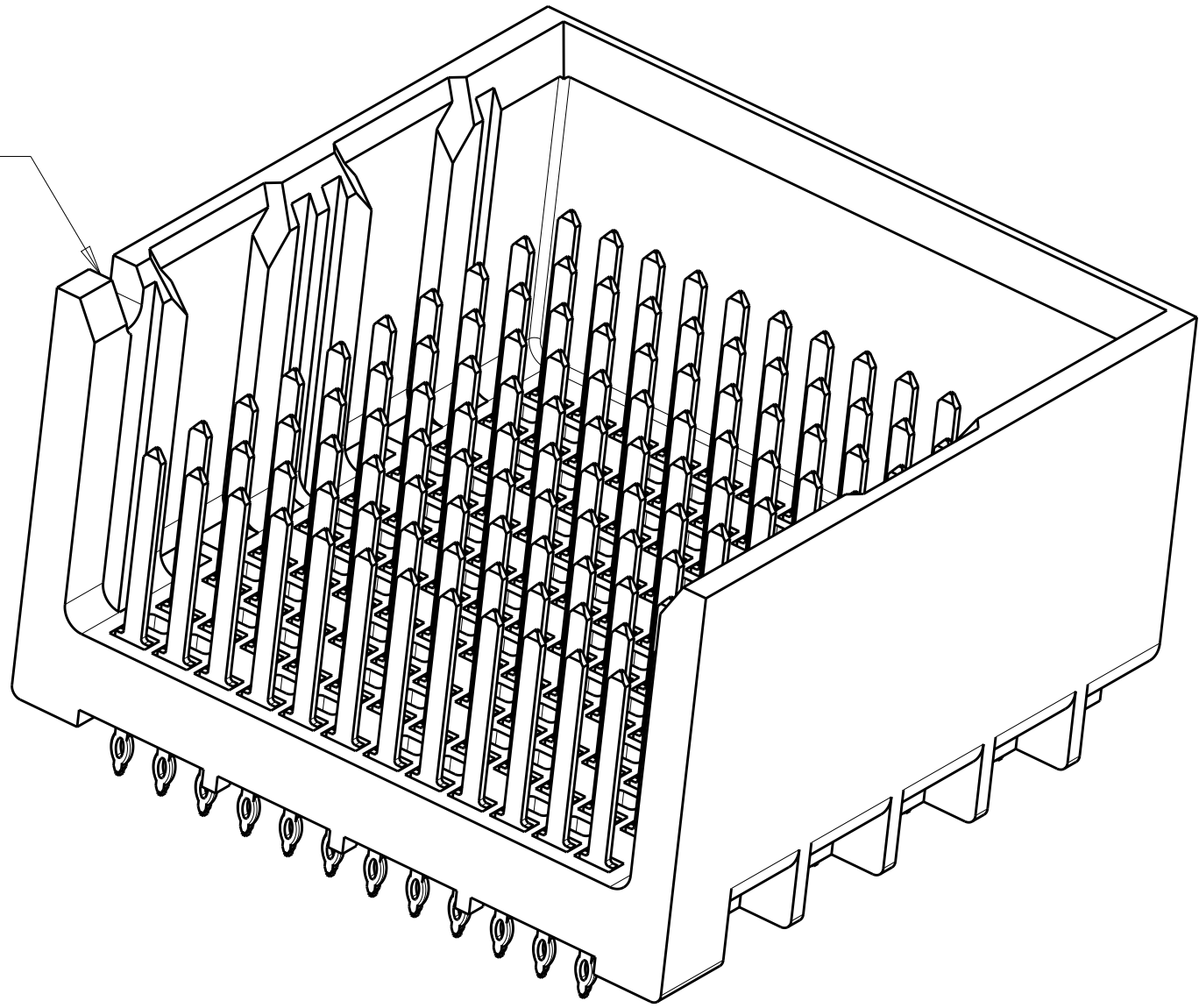


REVISIONS					
P.	LTR.	DESCRIPTION	DATE	DWN.	APVD.
	A1	RELEASEDREVISED PER ECO-15-001494	04FEB2015	AP	DD

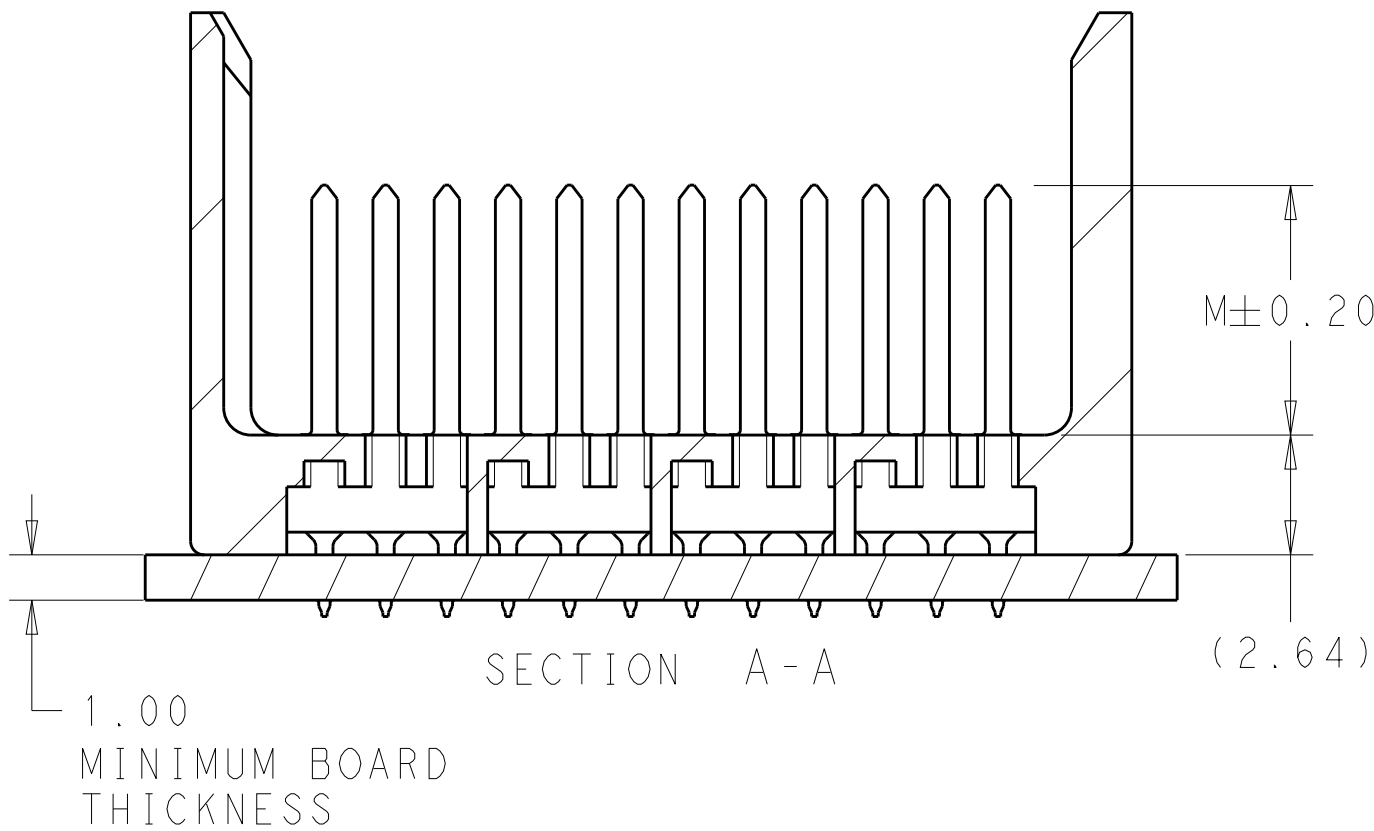
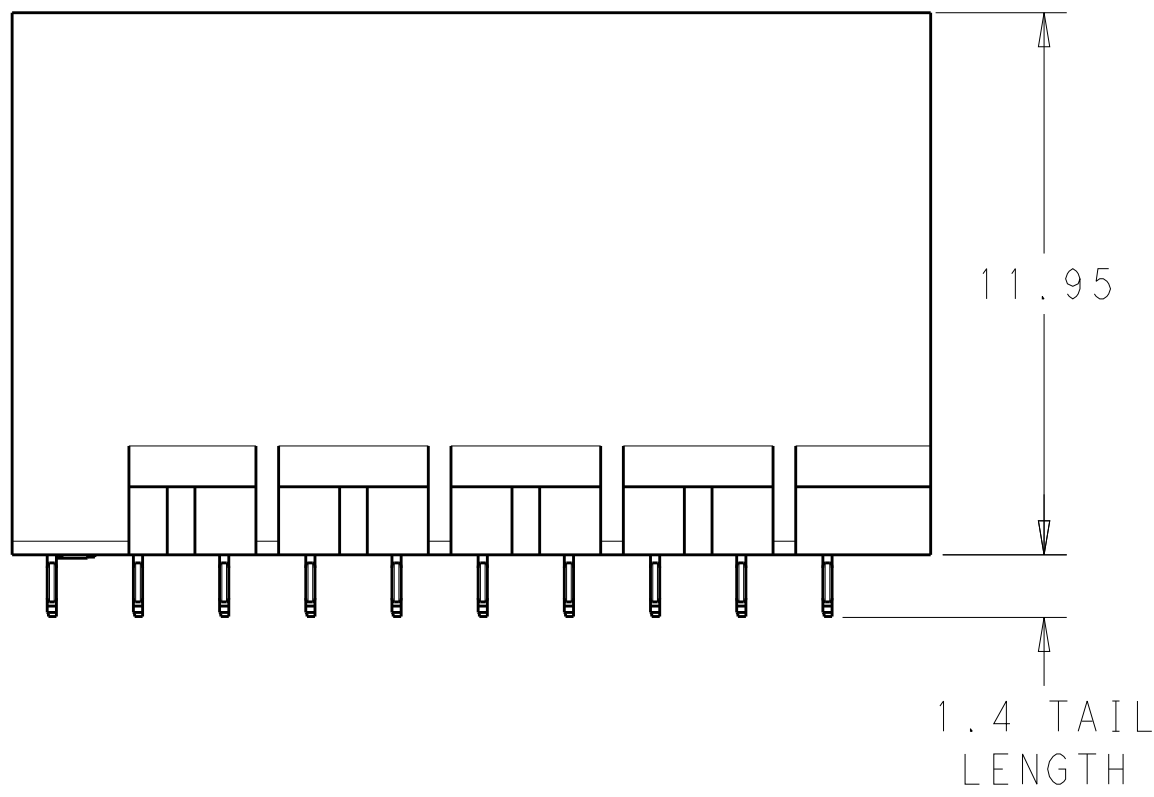
1 MATERIAL:
HOUSING: LCP, GLASS FILLED, UL94V-0.
TERMINALS: HIGH PERFORMANCE COPPER ALLOY.

2 FINISH:
30µ" MIN GOLD IN CONTACT AREA. SELECTIVE TIN
ON PCB TAILS, NICKEL OVERALL.

NOTCH DESIGNATES
ROW A



UNGUIDED
BACKPLANE HOLE PATTERN
(CONNECTOR SIDE)





THIS DRAWING IS A CONTROLLED DOCUMENT.		DWN J. K. SHOBER	03JAN2011	TE Connectivity	
		CHK J. EABY	03JAN2011		
DIMENSIONS:		APVD J. EABY	03JAN2011	NAME	IMPACT, 4 PAIR, 10 COLUMN, HEADER
mm		PRODUCT SPEC		UNGUIDED, RIGHT END WALL	
		APPLICATION SPEC		SIGNAL MODULE, 0.46 PTH	
		SIZE	CAGE CODE	DRAWING NO	RESTRICTED TO
		WEIGHT	-	A100779C=2007819	-
MATERIAL		CUSTOMER DRAWING		SCALE	6:1
				SHEET	1 OF 2
				REV	A1

REVISIONS					
P	LTR	DESCRIPTION	DATE	DWN	APVD
-	-	SEE SHEET 1	-	-	-

	5.5	2007819-3
	4.9	2007819-2
	4.5	2007819-1
FINISH	DIM M	PART NUMBER

REFER TO WWW.TE.COM
FOR PRODUCT AVAILABILITY

THIS DRAWING IS A CONTROLLED DOCUMENT.		DWN J. K. SHOBER	03JAN2011	 TE Connectivity				
DIMENSIONS:		CHK J. EABY	03JAN2011					
mm		APVD J. EABY	03JAN2011					
		NAME						
TOLERANCES UNLESS OTHERWISE SPECIFIED:		PRODUCT SPEC		IMPACT, 4 PAIR, 10 COLUMN, HEADER UNGUIDED, RIGHT END WALL SIGNAL MODULE, 0.46 PTH				
0 PLC ± 1 PLC ±0.25 2 PLC ±0.13 3 PLC ± 4 PLC ± ANGLES ± FINISH		APPLICATION SPEC						
MATERIAL		WEIGHT		SIZE	CAGE CODE	DRAWING NO	RESTRICTED TO	
-		-		A1	100779	C=2007819	-	
SEE TABLE		CUSTOMER DRAWING		SCALE		5:1	SHEET 2 OF 2	REV A1