



Chipsmall Limited consists of a professional team with an average of over 10 year of expertise in the distribution of electronic components. Based in Hongkong, we have already established firm and mutual-benefit business relationships with customers from,Europe,America and south Asia,supplying obsolete and hard-to-find components to meet their specific needs.

With the principle of “Quality Parts,Customers Priority,Honest Operation,and Considerate Service”,our business mainly focus on the distribution of electronic components. Line cards we deal with include Microchip,ALPS,ROHM,Xilinx,Pulse,ON,Everlight and Freescale. Main products comprise IC,Modules,Potentiometer,IC Socket,Relay,Connector.Our parts cover such applications as commercial,industrial, and automotives areas.

We are looking forward to setting up business relationship with you and hope to provide you with the best service and solution. Let us make a better world for our industry!



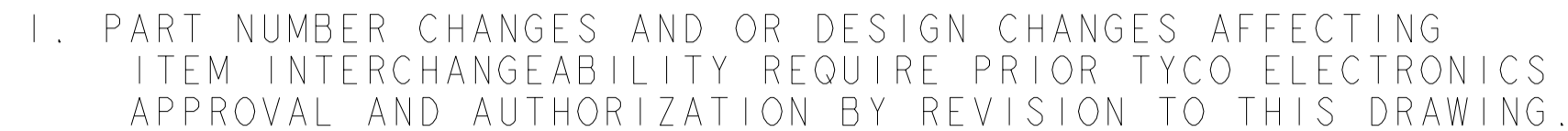
## Contact us

Tel: +86-755-8981 8866 Fax: +86-755-8427 6832

Email & Skype: [info@chipsmall.com](mailto:info@chipsmall.com) Web: [www.chipsmall.com](http://www.chipsmall.com)

Address: A1208, Overseas Decoration Building, #122 Zhenhua RD., Futian, Shenzhen, China





2 MATERIAL: INSULATORS - THERMOPLASTIC, GLASS REINFORCED,  
COLOR: BLACK  
UL94V-0 FLAMMABILITY RATED.  
POWER CONTACTS - PHOSPHOR BRONZE ALLOY,  
COPPER ALLOY  
CROWN BAND: BERRYLLIUM COPPER

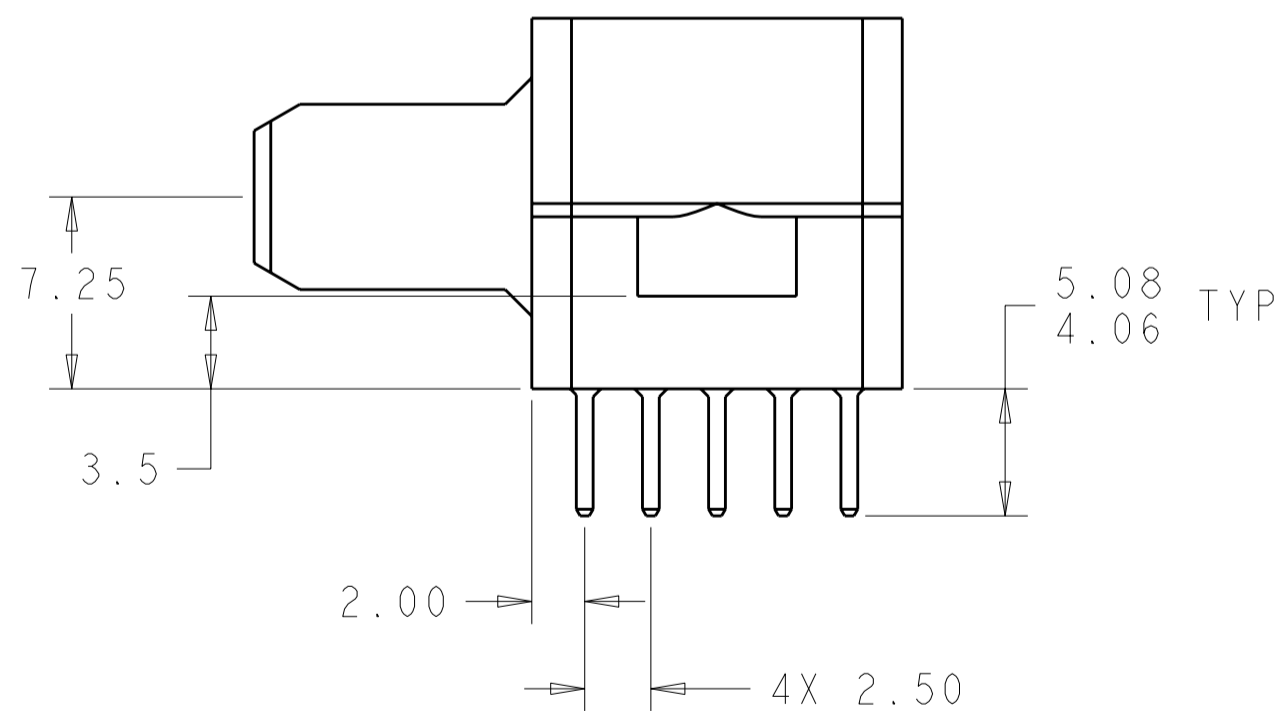
3 FINISH:  
CONTACTS - GOLD PLATE 0.76μm MIN. THK. OVER  
NICKEL 1.27μm MIN. THK.  
SOLDER TAILS TIN 3.05μm MIN. THK. OVER  
NICKEL 1.27μm MIN THK.


4 ITEMS PROVIDED TO THIS SPECIFICATION TO BE IDENTIFIED ON THE CONTAINER PER THE FOLLOWING IDENTIFIER LABEL

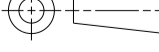
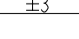
TYCO ELECTRONICS P/N      DATE CODE      YEAR WEEK  
 XXXXXXXX-X      XXXX      (e.g., 0106)

5. MATES WITH TYCO ELECTRONICS P/N 6646275-1

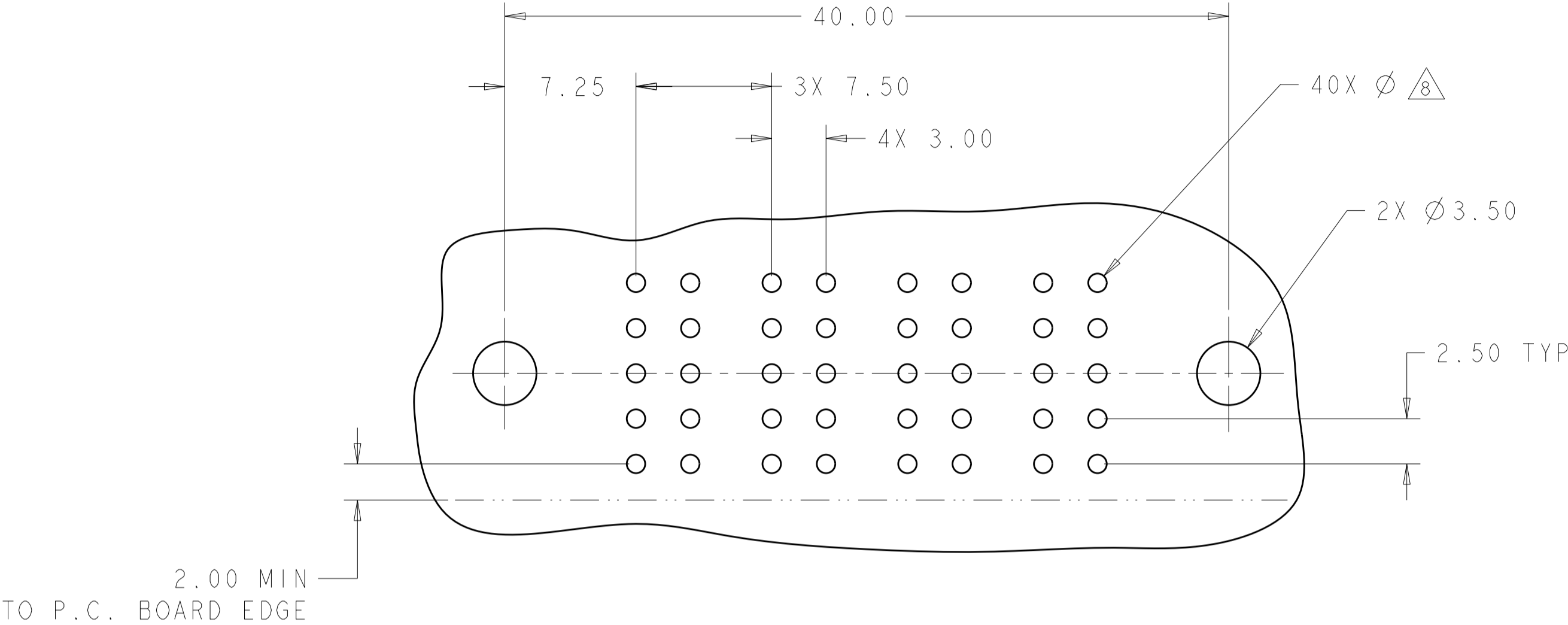
 MOUNTING FLANGE ACCEPTS M3 OR #4-40 SCREWS (USER SUPPLIED).



AS SHOWN		6646683 - I	
DESCRIPTION		PART NUMBER	
 <b>Tyco Electronics</b>		Tyco Electronics Harrisburg, PA 17105-3608	
NAME			
PIN CONNECTOR ASSEMBLY RIGHT ANGLE, SOLDER TAILS FLATPAQ			
SIZE	CAGE CODE	DRAWING NO	RESTRICTED TO
A2	00779	©-6646683	-
SCALE 4:1		SHEET 1 OF 3	REV A

THIS DRAWING IS A CONTROLLED DOCUMENT FOR TYCO ELECTRONICS CORPORATION IT IS SUBJECT TO CHANGE, AND THE CONTROLLING ENGINEERING ORGANIZATION SHOULD BE CONTACTED FOR THE LATEST REVISION.		DWN R. GRZYBOWSKI CHK S. FLICKINGER APVD S. FLICKINGER	
DIMENSIONS:		TOLERANCES UNLESS OTHERWISE SPECIFIED:	
mm	0 PLC ± 1 PLC ±0.5 2 PLC ±0.25 3 PLC ± 4 PLC ± ANGLES ±3	PRODUCT SPEC - APPLICATION SPEC -	
	MATERIAL	FINISH  	WEIGHT - CUSTOMER DRAWING

<p>ELCON</p>	<p>FLATPAQ</p>
--------------	----------------



PRINTED CIRCUIT LAYOUT  
COMPONENT SIDE

CONNECTOR	CATALOG MODULE #	QTY	SIZE NO.	CONTACT QTY	MATING PIN	MAX. CURRENT (PER CONTACT)	CONTACT SPACING	VOLTAGE RATING
PIN	FPI05	4	8	4	1.25 X 7.00 [.049 X .276]	35 amps	7.50 [1.2953]	250
	FP500	1	LEFT MOUNTING FLANGE					
	FP501	1	RIGHT MOUNTING FLANGE					

ELCON    FLATPAQ

THIS DRAWING IS A CONTROLLED DOCUMENT FOR TYCO ELECTRONICS CORPORATION  
IT IS SUBJECT TO CHANGE AND THE CONTROLLING ENGINEERING ORGANIZATION  
SHOULD BE CONTACTED FOR THE LATEST REVISION.

DIMENSIONS:

mm

MATERIAL

-

TOLERANCES UNLESS  
OTHERWISE SPECIFIED:

0 PLC ±

1 PLC ±0.5

2 PLC ±0.25

3 PLC ±

4 PLC ±

ANGLES ±3

FINISH

PRODUCT SPEC

-

APPLICATION SPEC

-

WEIGHT

-

CUSTOMER DRAWING

DWN  
R.GRZYBOWSKI  
15APRIL08

CHK  
S.FLICKINGER  
15APRIL08

APVD  
S.FLICKINGER  
15APRIL08

Tyco Electronics  
Harrisburg, PA 17105-3608

NAME

PIN CONNECTOR ASSEMBLY  
RIGHT ANGLE, SOLDER TAILS  
FLATPAQ

SIZE

A2

CAGE CODE

00779

DRAWING NO

6646683

RESTRICTED TO

-

SCALE

4:1

SHEET

2

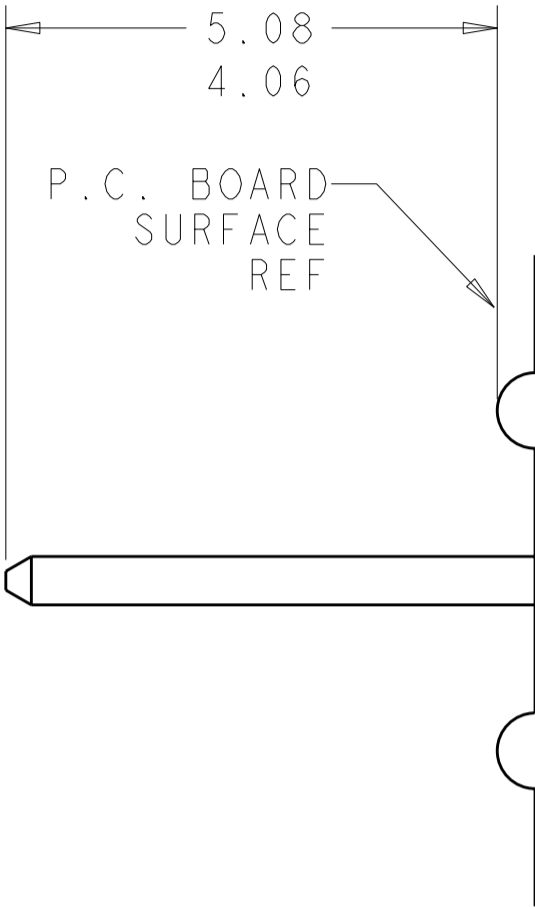
OF

3

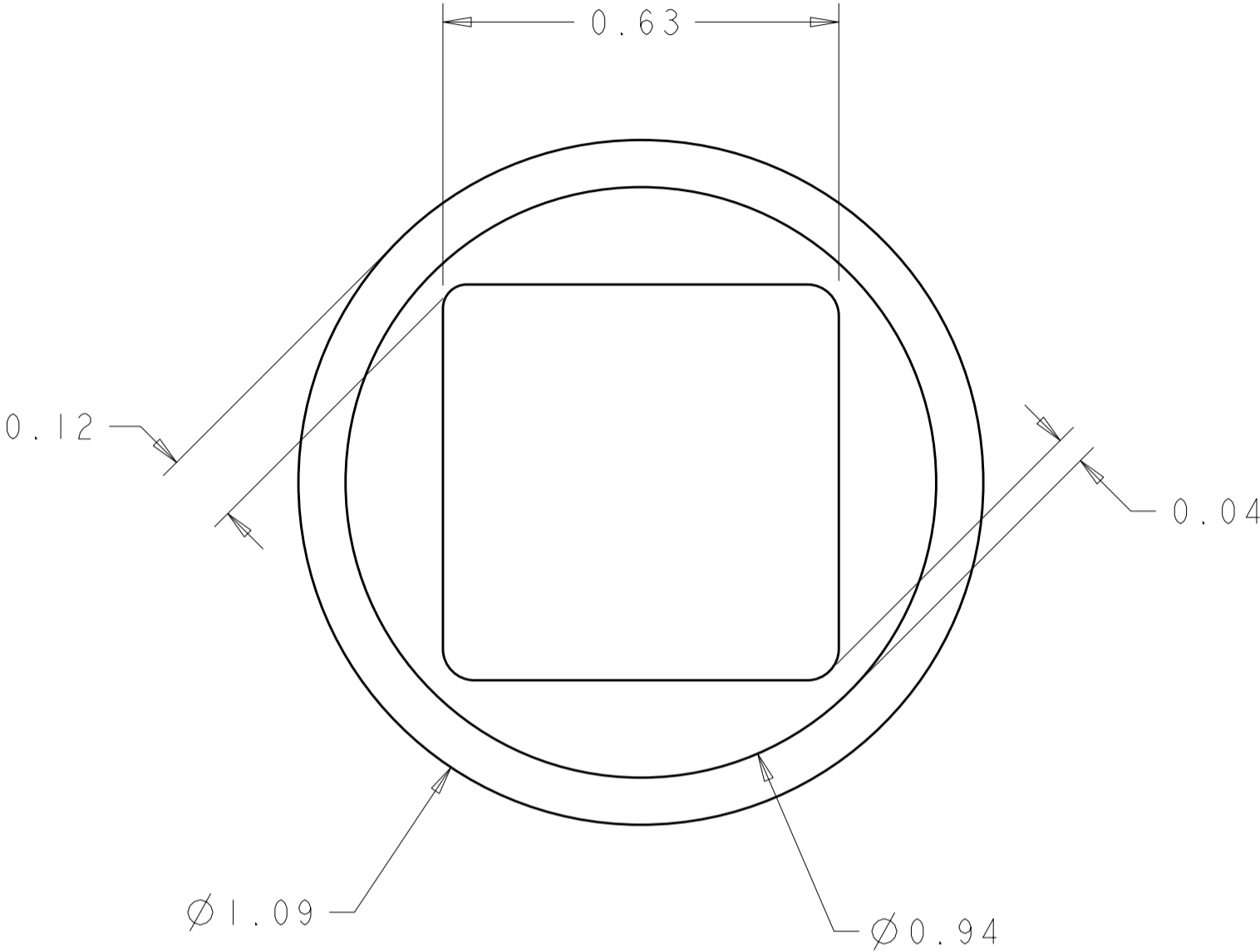
REV

A

LOC	DIST	REVISIONS					
GP	00	P	LTR	DESCRIPTION	DATE	DWN	APVD
			-	SEE SHEET 1	-	-	-



7. SOLDER TAIL DETAIL  
SCALE 10 : 1



8. SOLDER TERMINATION AREA  
SCALE 40:1  
RECOMMENDED PRINTED CIRCUIT SOLDER HOLE  
FINISHED HOLE: Ø1.02 [.040] ±.08 [.003]  
DRILLED HOLE: Ø1.15 [.0453] ±.013 [.0005]  
COPPER PLATE: .025 [.0010] MIN (PER SURFACE)  
TIN PLATE: .008 [.0003] MIN. (PER SURFACE)