



Chipsmall Limited consists of a professional team with an average of over 10 year of expertise in the distribution of electronic components. Based in Hongkong, we have already established firm and mutual-benefit business relationships with customers from,Europe,America and south Asia,supplying obsolete and hard-to-find components to meet their specific needs.

With the principle of “Quality Parts,Customers Priority,Honest Operation,and Considerate Service”,our business mainly focus on the distribution of electronic components. Line cards we deal with include Microchip,ALPS,ROHM,Xilinx,Pulse,ON,Everlight and Freescale. Main products comprise IC,Modules,Potentiometer,IC Socket,Relay,Connector.Our parts cover such applications as commercial,industrial, and automotives areas.

We are looking forward to setting up business relationship with you and hope to provide you with the best service and solution. Let us make a better world for our industry!



Contact us

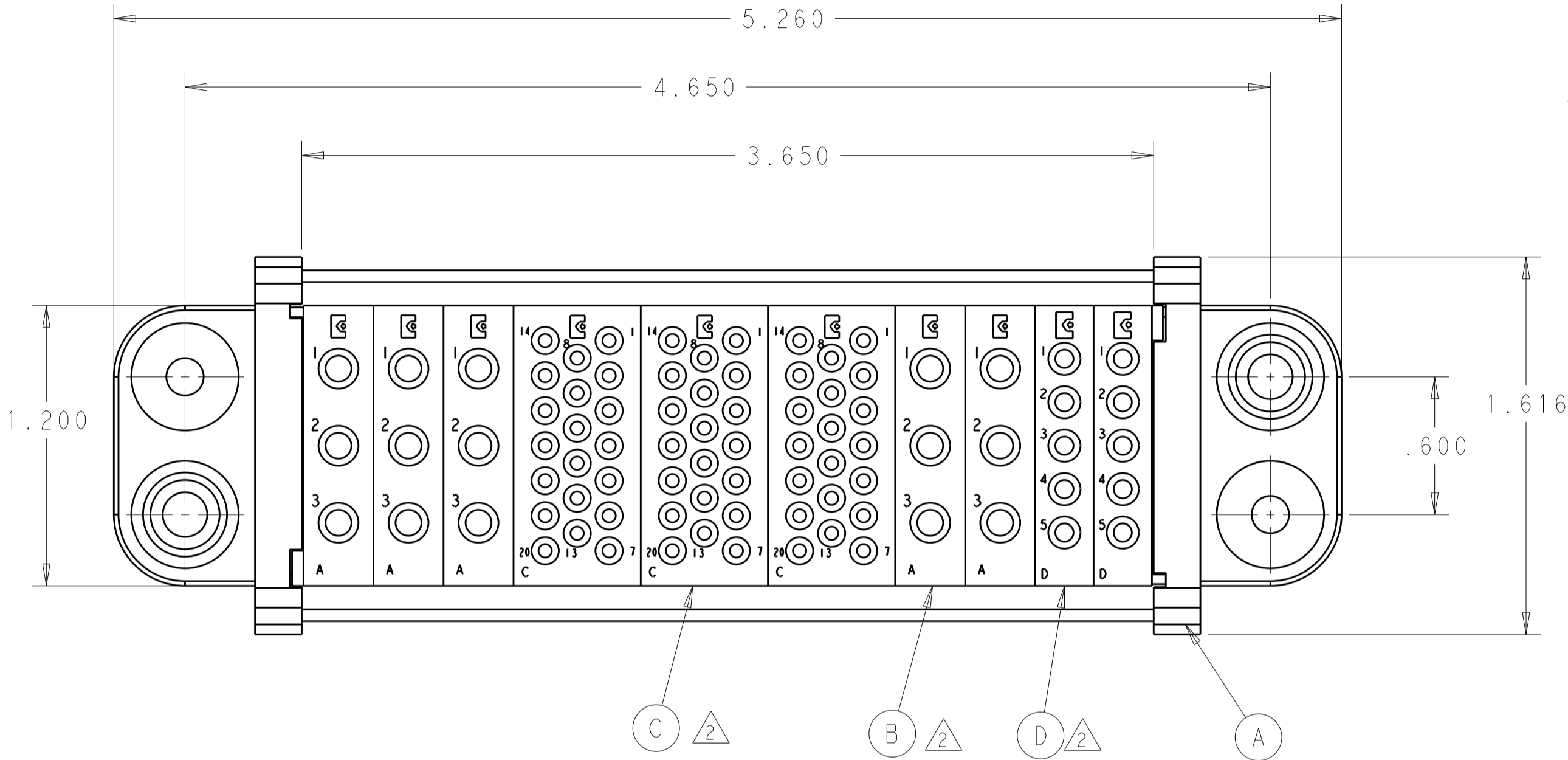
Tel: +86-755-8981 8866 Fax: +86-755-8427 6832

Email & Skype: info@chipsmall.com Web: www.chipsmall.com

Address: A1208, Overseas Decoration Building, #122 Zhenhua RD., Futian, Shenzhen, China



LOC	DIST	REVISIONS				
GP	00	P	LTR	DESCRIPTION	DATE	APVD
			B	REV PER ECO-11-020271	07OCT2011	RG



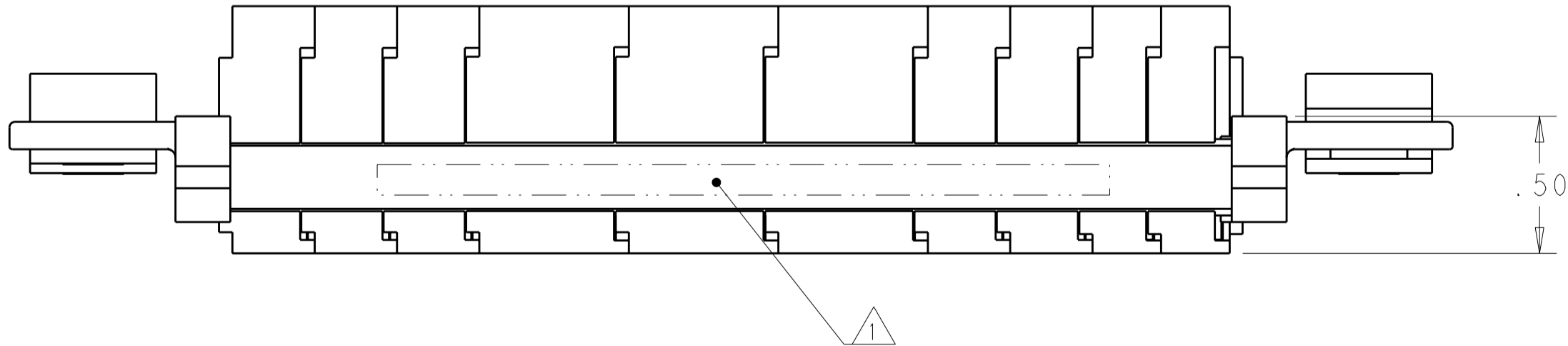
1 ITEMS PROVIDED TO THIS SPECIFICATION TO BE PERMANENTLY IDENTIFIED PER THE FOLLOWING IDENTIFIER:

TE PART NUMBER AND MANUFACTURING DATE CODE

2 MODULES ARE FOR CRIMP STYLE REMOVABLE CONTACTS (ITEMS E, F AND G). THEY ARE PACKAGED SEPARATELY WITH AN INSERTION/ REMOVAL TOOL AND WILL BE SHIPPED LOOSE WITH THE ASSEMBLY.

3 MOUNTING FLANGE BUSHING ACCEPTS 6/32 SCREW ($\varnothing .156$ CLEARANCE HOLE, FLOAT MOUNT) OR 8/32 SCREW ($\varnothing .173$ CLEARANCE HOLE, FIXED MOUNT) USER SUPPLIED.

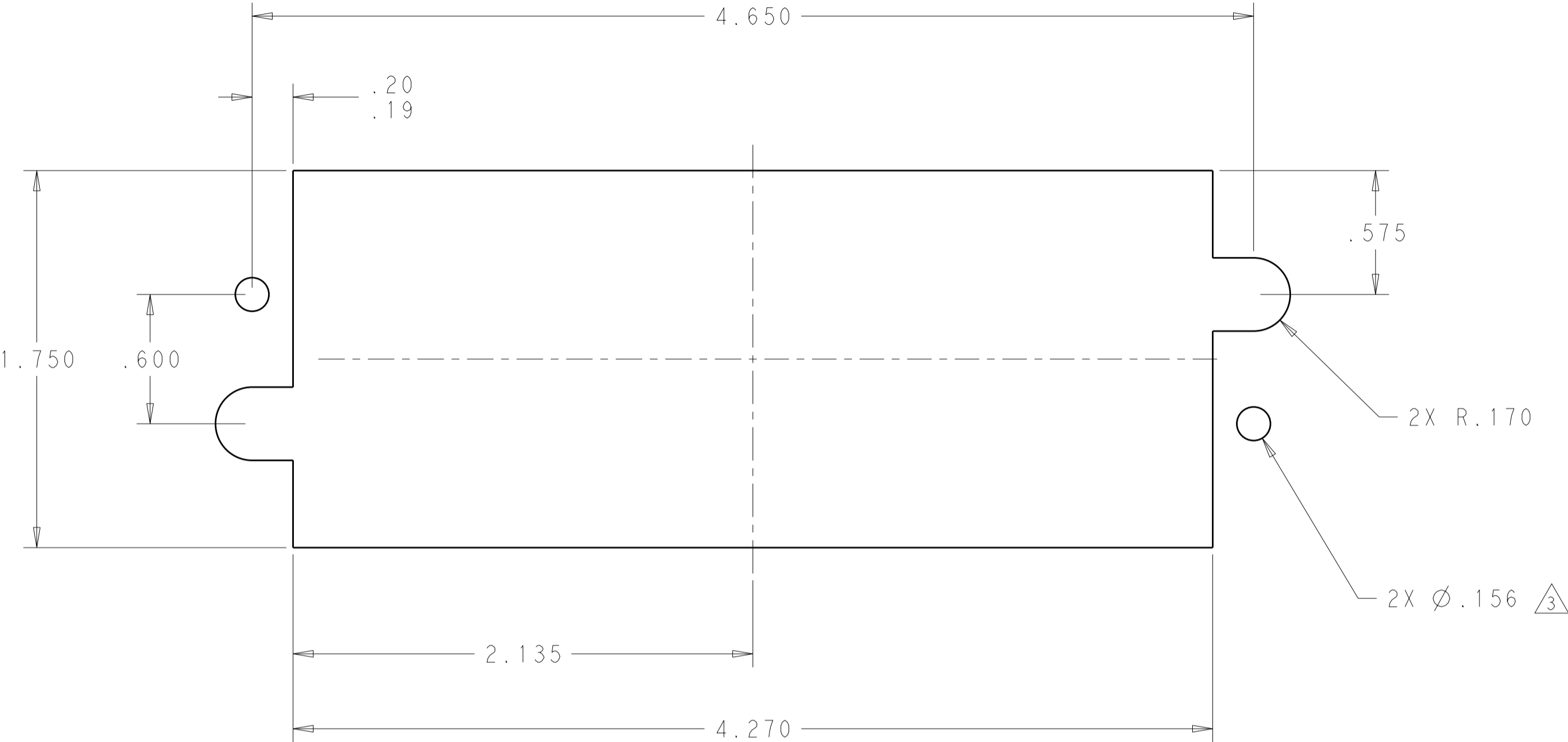
4. CONNECTOR MATES WITH P/N 2085850-1



2	60	1648325-1	SOCKET CONTACT, SIZE No. 20, CRIMP	G
2	15	6648318-1	SOCKET CONTACT, SIZE No. 12, CRIMP	F
2	10	6648319-1	SOCKET CONTACT, SIZE No. 16, CRIMP	E
	2	1648469-1	MODULE "D"	D
	3	1648468-1	MODULE "C"	C
	5	1648466-1	MODULE "A"	B
	2	6648252-1	END CAP, GUIDE SOCKET, FLOAT	A
	-1	PART NO.	DESCRIPTION	ITEM

ELCON DOMINO

THIS DRAWING IS A CONTROLLED DOCUMENT.		DWN R. GRZYBOWSKI CHK D. ORRIS APVD D. ORRIS	15AUG2011 15AUG2011 15AUG2011	STE TE Connectivity	
DIMENSIONS: INCHES	TOLERANCES UNLESS OTHERWISE SPECIFIED:	PRODUCT SPEC	NAME	SOCKET CONNECTOR ASSEMBLY W/ PANEL CUT-OUT DOMINO	
	0 PLC ± 1 PLC ±.02 2 PLC ±.02 3 PLC ±.010 4 PLC ± ANGLES ± FINISH	APPLICATION SPEC	SIZE	CAGE CODE	DRAWING NO
MATERIAL		WEIGHT	A2	00779	C-2085851
		CUSTOMER DRAWING	SCALE	2:1	SHEET 1 OF 2 REV B



SOCKET PANEL MOUNT CUT-OUT

ELCON DOMINO

THIS DRAWING IS A CONTROLLED DOCUMENT.

DWN

R. GRZYBOWSKI

15AUG2011

CHK

D. ORRIS

15AUG2011

APVD

D. ORRIS

15AUG2011

DIMENSIONS:

INCHES

0 PLC ±
1 PLC ±
2 PLC ±.02
3 PLC ±.010
4 PLC ±
ANGLES ±
FINISH

TOLERANCES UNLESS OTHERWISE SPECIFIED:

0 PLC ±
1 PLC ±
2 PLC ±.02
3 PLC ±.010
4 PLC ±
ANGLES ±
FINISH

PRODUCT SPEC

-

APPLICATION SPEC

-

WEIGHT

-

CUSTOMER DRAWING

NAME

SOCKET CONNECTOR ASSEMBLY
W/ PANEL CUT-OUT
DOMINO

SIZE

A2

CAGE CODE

00779

DRAWING NO

2085851

RESTRICTED TO

-

SCALE

2:1

SHEET

2

OF

2

REV

B

TE Connectivity

1471-9 (3/11)