



Chipsmall Limited consists of a professional team with an average of over 10 year of expertise in the distribution of electronic components. Based in Hongkong, we have already established firm and mutual-benefit business relationships with customers from,Europe,America and south Asia,supplying obsolete and hard-to-find components to meet their specific needs.

With the principle of "Quality Parts,Customers Priority,Honest Operation,and Considerate Service",our business mainly focus on the distribution of electronic components. Line cards we deal with include Microchip,ALPS,ROHM,Xilinx,Pulse,ON,Everlight and Freescale. Main products comprise IC,Modules,Potentiometer,IC Socket,Relay,Connector.Our parts cover such applications as commercial,industrial, and automotives areas.

We are looking forward to setting up business relationship with you and hope to provide you with the best service and solution. Let us make a better world for our industry!



## Contact us

Tel: +86-755-8981 8866 Fax: +86-755-8427 6832

Email & Skype: [info@chipsmall.com](mailto:info@chipsmall.com) Web: [www.chipsmall.com](http://www.chipsmall.com)

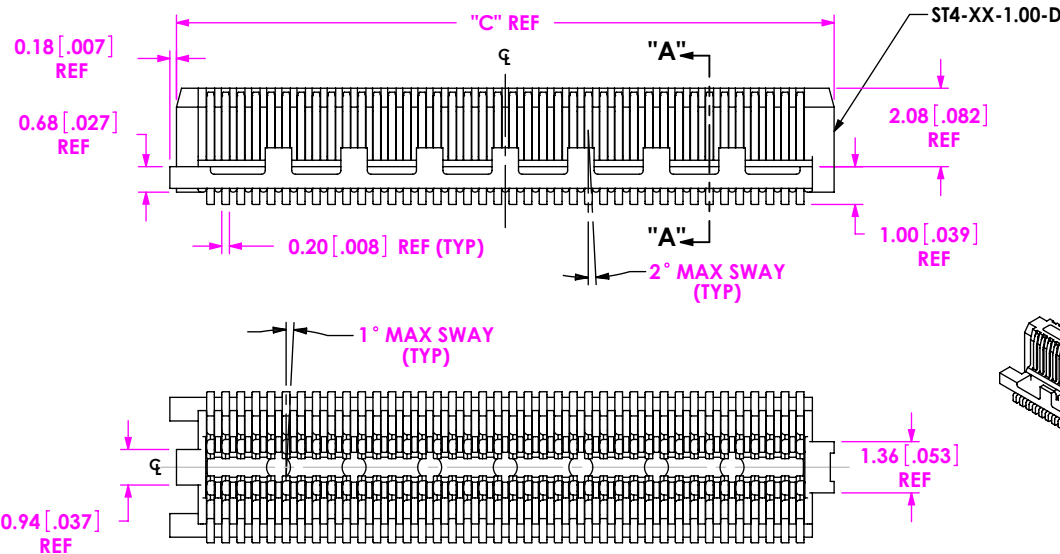
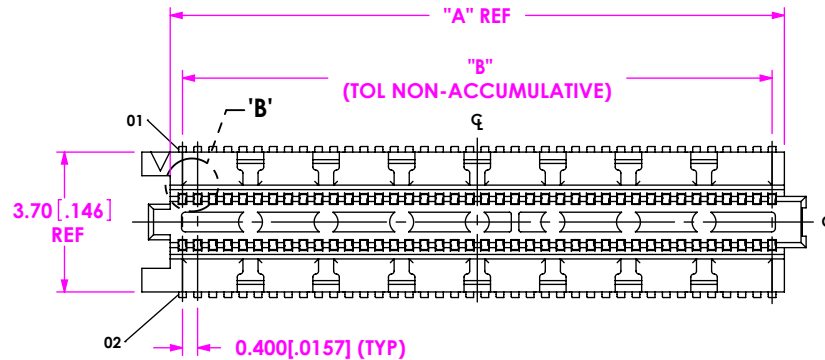
Address: A1208, Overseas Decoration Building, #122 Zhenhua RD., Futian, Shenzhen, China



## REVISION T


No. OF POS	"A"	"B"	"C"
-10	4.25 [0.167]	3.600 [0.1417]	5.40 [0.213]
*-15	6.25 [0.246]	5.600 [0.2205]	7.40 [0.291]
-20	8.25 [0.325]	7.600 [0.2992]	9.40 [0.370]
-30	12.25 [0.482]	11.600 [0.4567]	13.40 [0.528]
-40	16.25 [0.640]	15.600 [0.6142]	17.40 [0.685]
-50	20.25 [0.797]	19.600 [0.7717]	21.40 [0.843]

\* = NOT TOOLED FOR LEAD STYLE 2.50



**FIG 1**  
**ST4-40-1.00-X-D SHOWN**

**NOTES:**

1.  REPRESENTS A CRITICAL DIMENSION.
2. MINIMUM PUSHOUT FORCE: SIGNAL: 0.80N[.25 LB], LATCH: 2.22N[.5 LB]
3. -P OPTION MUST BE SPECIFIED FOR TAPE & REEL PACKAGING.
4. FOR QUANTITIES UP TO 49 PIECES, NO LEADER, TRAILER, OR REEL WILL BE SUPPLIED.  
FOR QUANTITIES OF 50-124 PIECES, NO LEADER OR TRAILER WILL BE SUPPLIED.
5. -L OPTION NOT INTENDED FOR FOR ALIGNMENT TO PCB.  
AUTOMATED PLACEMENT RECOMMENDED.

**DESIGNED & DIMENSIONED  
IN MILLIMETERS[INCHES]**

**ST4-XX-X.XX-X-D-X-XX-TR**

**No OF POSITIONS** —  
-10, \*-15, -20, -30, -40, -50  
(PER ROW)

### LEAD STYLE

- 1.00: SEE FIG 1  
(USE T-1M50-1.00-X)  
-1.50: SEE FIG 2, SHT 2  
(USE T-1M50-1.50-X)  
-2.50: SEE FIG 3, SHT 2  
(USE T-1M50-2.50-X)

### PLATING SPECIFICATION

- L: 10μ" SELECTIVE GOLD  
IN CONTACT AREA,  
MATTE TIN ON TAIL  
(USE T-1M50-X.XX-L)**

**PACKAGING**  
TR: TAPE AND REEL  
(SEE NOTES 3 & 4)

**PLACEMENT PAD**

- P: PICK AND PLACE PAD**  
 (-10, -20, -30, -40, -50 USE PPP-65-01,  
 -15 USE PPP-65-02)  
 (SEE FIG 7 & 8, SHT 3)  
**\*\* -PA: PICK AND PLACE PAD**  
 WITH -A PINS (USE PPP-70)  
 (SEE FIG 9 & 10, SHT 4)  
 (NOT AVAILABLE  
 ON -15 POS)

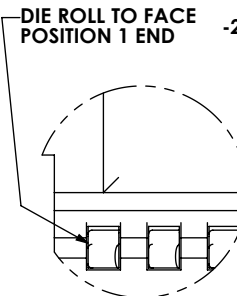
## OPTIONS

- \*\*L: LATCHING  
(USE WT-39-X.XX-T)  
(LEAVE BLANK FOR  
NO OPTION)  
(TOOLED FOR LEAD STYLE 1.00 ONLY)**

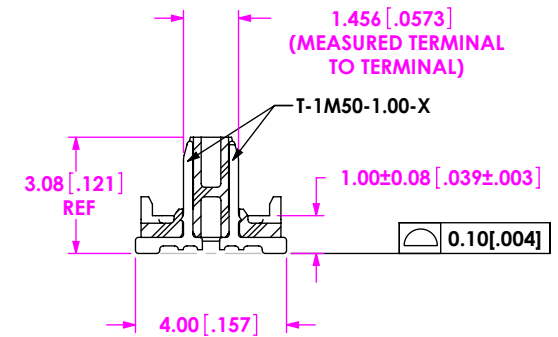
### ROW SPECIFICATION

**-D: DOUBLE**

\* = NOT TOOLED FOR LEAD STYLE 2.50  
\*\* = AVAILABLE FOR EXISTING CUSTOMERS ONLY

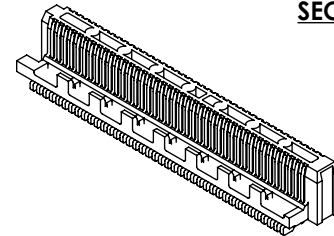


**DETAIL 'B'**  
**SCALE 20 : 1**



**SECTION "A"-"A"**

TABLE 2 REF		
STACK HEIGHT		
ST4 LEAD STYLE	SS4 LEAD STYLE	
	-3.00	-3.50
-1.00	4.0 [0.16]	4.5 [0.18]
-1.50	4.5 [0.18]	5.0 [0.20]
-2.50	5.5 [0.22]	6.0 [0.24]



UNLESS OTHERWISE SPECIFIED,  
DIMENSIONS ARE IN MILLIMETERS

**TOLERANCES ARE:**

## DECIMALS

.X:  $\pm 0.3$  [.01]  
.XX:  $\pm 0.13$  [.005]

 $\text{.XXX: } \pm 0.051 \text{ [.0020]}$ 

**PROPRIETARY NOTE**

THIS DOCUMENT CONTAINS CONFIDENTIAL AND PROPRIETARY INFORMATION AND ALL DESIGN, MANUFACTURING, REPRODUCTION, USE, PATENT RIGHTS AND SALES RIGHTS ARE EXPRESSLY RESERVED BY SAMTEC, INC. THIS DOCUMENT SHALL NOT BE DISCLOSED, IN WHOLE OR PART, TO ANY UNAUTHORIZED PERSON OR ENTITY NOR REPRODUCED, TRANSFERRED OR INCORPORATED IN ANY OTHER PROJECT IN ANY MANNER WITHOUT THE EXPRESS WRITTEN CONSENT OF SAMTEC, INC.

**MATERIAL:**

DO NOT SCALE DRAWING

INSULATOR: LCP, UL 94 V0, COLOR: BLACK  
TERMINAL: PHOS BRONZE

**SHEET SCALE: 5:1**

	<b>DESCRIPTION:</b>
--	---------------------

### 0.4mm[.016] TERMINAL STRIP ASSEMBLY

DWG. NO.

**ST4-XX-X.XX-X-D-X-XX-TR**

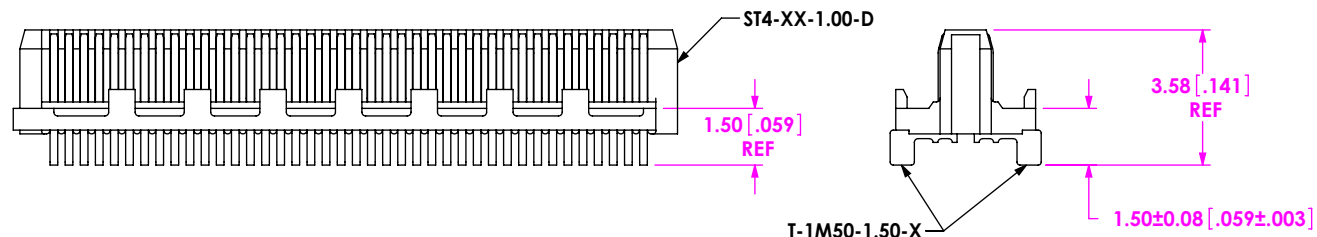
BY: BRATCHER 3/21/2007

**SHEET 1 OF 4**

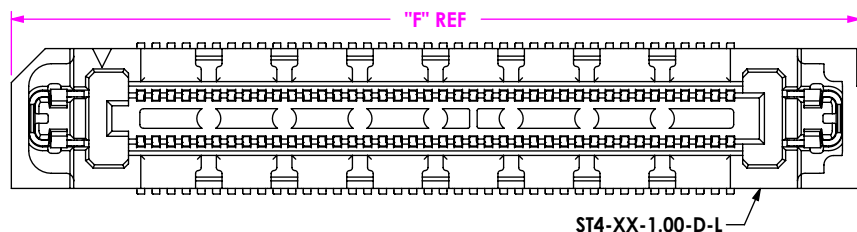
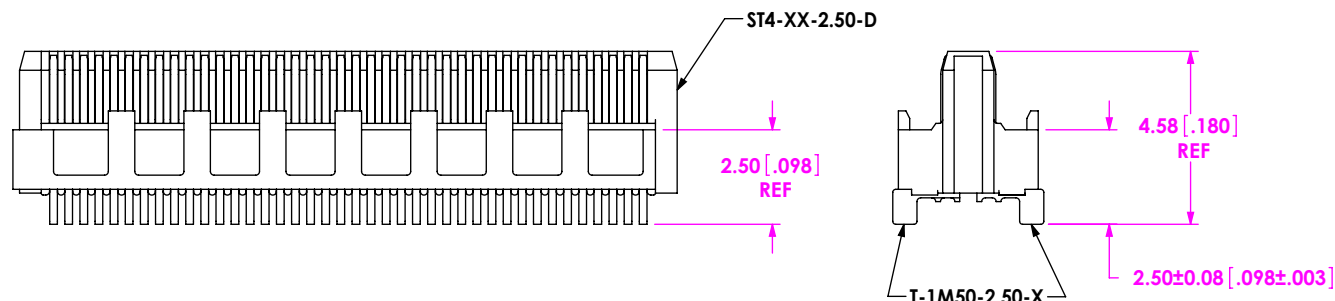
F:\DWG\MISC\MKTG\ST4-XX-X.XX-X-D-X-XX-TR-MKT.SLDDRW



**FIG 2**  
1.50 LEAD STYLE  
ST4-40-1.50-X-D SHOWN  
(DIFFERENT AS SHOWN, OTHERWISE SAME AS FIG 1)

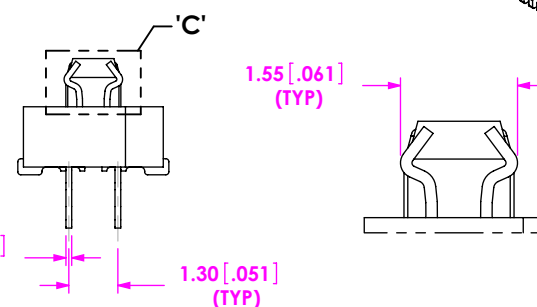
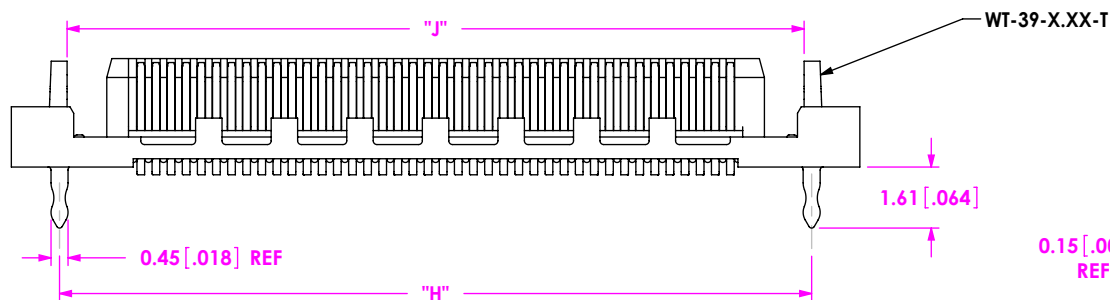


**FIG 3**  
2.50 LEAD STYLE  
ST4-40-2.50-X-D SHOWN  
(DIFFERENT AS SHOWN, OTHERWISE SAME AS FIG 1)



LEAD STYLE	LATCH
-1.00	WT-39-1.00-T
-1.50	WT-39-1.50-T
-2.50	WT-39-2.50-T

TOOLED FOR -1.00 LEAD STYLE ONLY



**TABLE 4**

No. OF POS	"F"	"H"	"J"
-10	10.46 [0.412]	7.90 [0.311]	7.50 [0.295]
-15	12.46 [0.491]	9.90 [0.390]	9.50 [0.374]
-20	14.46 [0.569]	11.90 [0.469]	11.50 [0.453]
-30	18.46 [0.727]	15.90 [0.626]	15.50 [0.610]
-40	22.46 [0.884]	19.90 [0.783]	19.50 [0.768]
-50	26.46 [1.042]	23.90 [0.941]	23.50 [0.925]

**FIG 5**  
\*\*-L: LATCHING OPTION  
ST4-40-1.00-X-D-L SHOWN  
(DIFFERENT AS SHOWN, OTHERWISE SAME AS FIG 1)  
\*\*- AVAILABLE FOR EXISTING CUSTOMERS ONLY

**PROPRIETARY NOTE**  
THIS DOCUMENT CONTAINS CONFIDENTIAL AND PROPRIETARY INFORMATION AND ALL DESIGN, MANUFACTURING, REPRODUCTION, USE, PATENT RIGHTS AND SALES RIGHTS ARE EXPRESSLY RESERVED BY SAMTEC, INC. THIS DOCUMENT SHALL NOT BE DISCLOSED, IN WHOLE OR PART, TO ANY UNAUTHORIZED PERSON OR ENTITY NOR REPRODUCED, TRANSFERRED OR INCORPORATED IN ANY OTHER PROJECT IN ANY MANNER WITHOUT THE EXPRESS WRITTEN CONSENT OF SAMTEC, INC.

DO NOT SCALE DRAWING

SHEET SCALE: 5:1

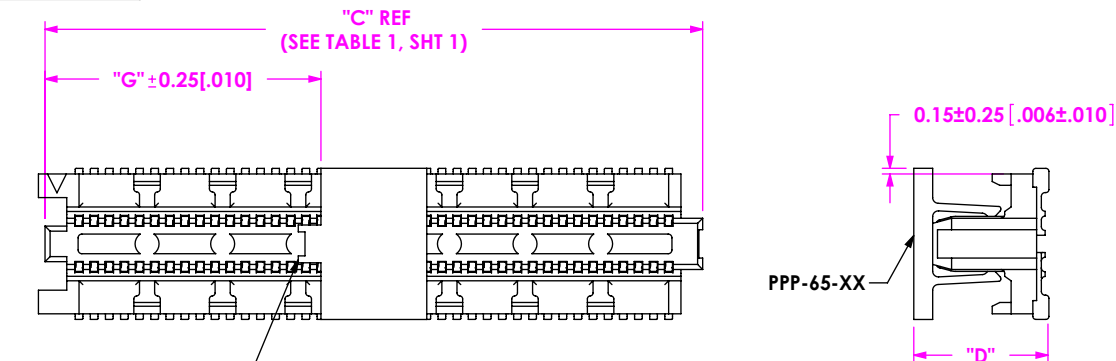
**samtec**

520 PARK EAST BLVD, NEW ALBANY, IN 47150  
PHONE: 812-944-6733 FAX: 812-948-5047  
e-Mail info@SAMTEC.com code 55322

DESCRIPTION:  
**0.4mm[.016] TERMINAL STRIP ASSEMBLY**

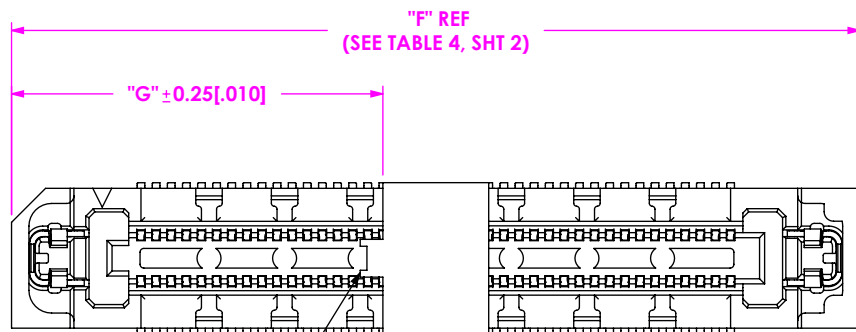
DWG. NO.  
**ST4-XX-X.XX-X-D-X-XX-TR**

BY: BRATCHER 3/21/2007 SHEET 2 OF 4



NOTCH OF PPP-65-XX  
TO FACE POS 1 END

**FIG 7**  
-P: PICK AND PLACE PAD OPTION  
ST4-40-1.00-X-D-P SHOWN  
(DIFFERENT AS SHOWN, OTHERWISE SAME AS FIG 1)



NOTCH OF PPP-65-XX  
TO FACE POS 1 END

**FIG 8**  
-P: PICK AND PLACE PAD (W/ LATCH OPTION)  
ST4-40-1.00-X-D-L-P SHOWN  
(DIFFERENT AS SHOWN, OTHERWISE SAME AS FIG 1)

TABLE 7	
LEAD STYLE	"D"
-1.00	3.55 [0.140]
-1.50	4.05 [0.159]
-2.50	5.05 [0.199]

TABLE 8		
No. OF POS	"G" WITH NO - L OPTION	"G" WITH -L OPTION
-10	1.30 [0.051]	3.83 [0.151]
*-15	2.30 [0.091]	2.83 [0.111]
-20	3.30 [0.130]	5.83 [0.230]
-30	5.30 [0.209]	7.83 [0.308]
-40	7.30 [0.287]	9.83 [0.387]
-50	9.30 [0.366]	11.83 [0.466]

\* = NOT TOOLED FOR LEAD STYLE 2.50

**PROPRIETARY NOTE**  
THIS DOCUMENT CONTAINS CONFIDENTIAL AND PROPRIETARY INFORMATION AND ALL DESIGN, MANUFACTURING, REPRODUCTION, USE, PATENT RIGHTS AND SALES RIGHTS ARE EXPRESSLY RESERVED BY SAMTEC, INC. THIS DOCUMENT SHALL NOT BE DISCLOSED, IN WHOLE OR PART, TO ANY UNAUTHORIZED PERSON OR ENTITY NOR REPRODUCED, TRANSFERRED OR INCORPORATED IN ANY OTHER PROJECT IN ANY MANNER WITHOUT THE EXPRESS WRITTEN CONSENT OF SAMTEC, INC.

DO NOT SCALE DRAWING

SHEET SCALE: 5:1

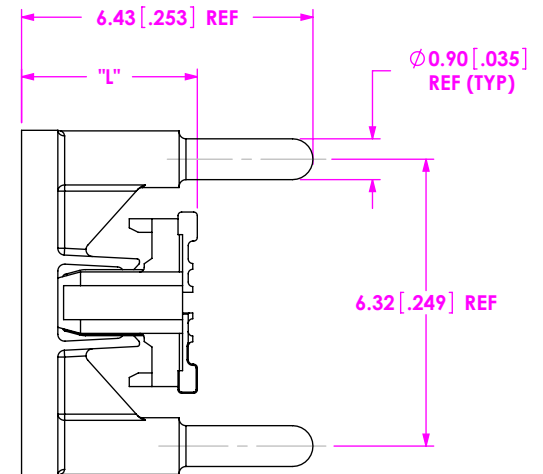
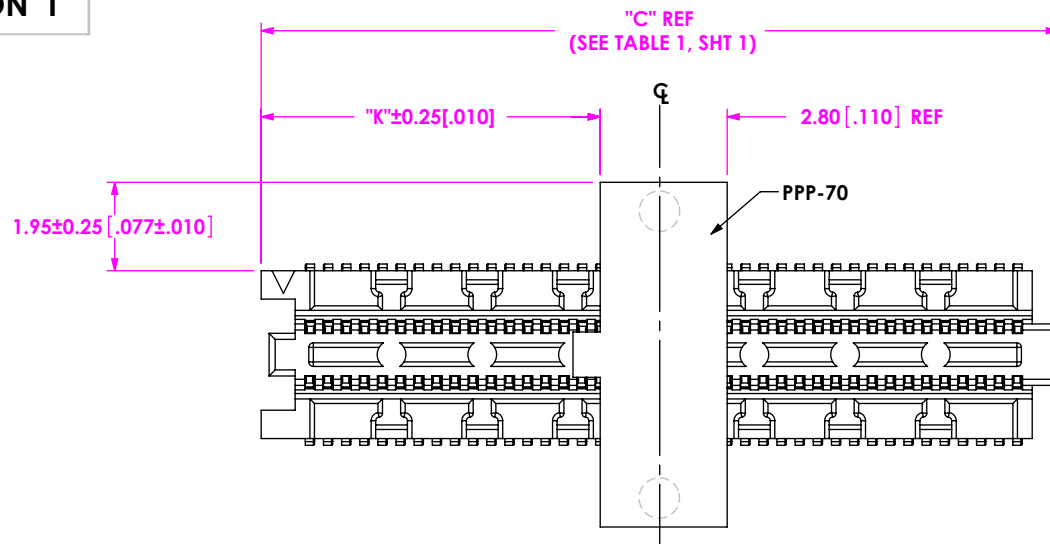
**samtec**

520 PARK EAST BLVD, NEW ALBANY, IN 47150  
PHONE: 812-944-6733 FAX: 812-948-5047  
e-Mail info@SAMTEC.com code 55322

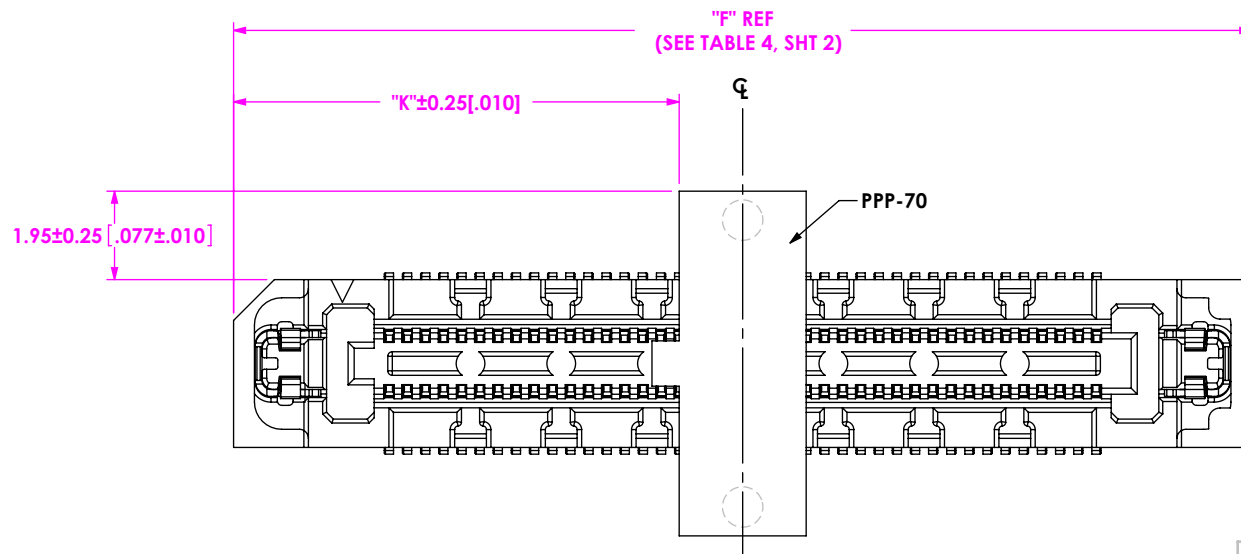
DESCRIPTION:  
**0.4mm[.016] TERMINAL STRIP ASSEMBLY**

DWG. NO.  
**ST4-XX-X.XX-X-D-X-XX-TR**

BY: BRATCHER 3/21/2007 SHEET 3 OF 4



**FIG 9**  
**\*\* - PA: PICK & PLACE WITH ALIGNMENT PINS**  
**ST4-40-1.00-X-D-PA SHOWN**  
**(DIFFERENT AS SHOWN, OTHERWISE SAME AS FIG 1)**  
**\*\* = AVAILABLE FOR EXISTING CUSTOMERS ONLY**



**FIG 10**  
**\*\* - PA: PICK & PLACE WITH ALIGNMENT PINS( WITH -L OPTION)**  
**ST4-40-1.00-X-D-L-PA SHOWN**  
**(DIFFERENT AS SHOWN, OTHERWISE SAME AS FIG 1)**  
**\*\* = AVAILABLE FOR EXISTING CUSTOMERS ONLY**

TABLE 9		
POS	"K" W/O -L OPTION	"K" W/ -L OPTION
-10	1.300 [0.051]	3.830 [0.151]
-20	3.300 [0.130]	5.830 [0.230]
-30	5.300 [0.209]	7.830 [0.308]
-40	7.300 [0.287]	9.830 [0.387]
-50	9.300 [0.366]	11.830 [0.466]

TABLE 10	
LEAD STYLE	"L"
-1.00	3.58 [0.141]
-1.50	4.08 [0.161]
-2.50	5.08 [0.200]

**PROPRIETARY NOTE**  
 THIS DOCUMENT CONTAINS CONFIDENTIAL AND PROPRIETARY INFORMATION AND ALL DESIGN, MANUFACTURING, REPRODUCTION, USE, PATENT RIGHTS AND SALES RIGHTS ARE EXPRESSLY RESERVED BY SAMTEC, INC. THIS DOCUMENT SHALL NOT BE DISCLOSED, IN WHOLE OR PART, TO ANY UNAUTHORIZED PERSON OR ENTITY NOR REPRODUCED, TRANSFERRED OR INCORPORATED IN ANY OTHER PROJECT IN ANY MANNER WITHOUT THE EXPRESS WRITTEN CONSENT OF SAMTEC, INC.

DO NOT SCALE DRAWING

SHEET SCALE: 5:1

**samtec**

520 PARK EAST BLVD, NEW ALBANY, IN 47150  
 PHONE: 812-944-6733 FAX: 812-948-5047  
 e-Mail info@SAMTEC.com code 55322

DESCRIPTION:  
**0.4mm[.016] TERMINAL STRIP ASSEMBLY**

DWG. NO.  
**ST4-XX-X.XX-X-D-X-XX-TR**

BY: BRATCHER 3/21/2007 SHEET 4 OF 4