



Chipsmall Limited consists of a professional team with an average of over 10 year of expertise in the distribution of electronic components. Based in Hongkong, we have already established firm and mutual-benefit business relationships with customers from,Europe,America and south Asia,supplying obsolete and hard-to-find components to meet their specific needs.

With the principle of “Quality Parts,Customers Priority,Honest Operation,and Considerate Service”,our business mainly focus on the distribution of electronic components. Line cards we deal with include Microchip,ALPS,ROHM,Xilinx,Pulse,ON,Everlight and Freescale. Main products comprise IC,Modules,Potentiometer,IC Socket,Relay,Connector.Our parts cover such applications as commercial,industrial, and automotives areas.

We are looking forward to setting up business relationship with you and hope to provide you with the best service and solution. Let us make a better world for our industry!



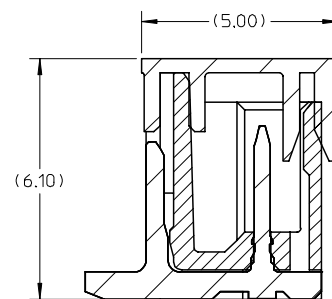
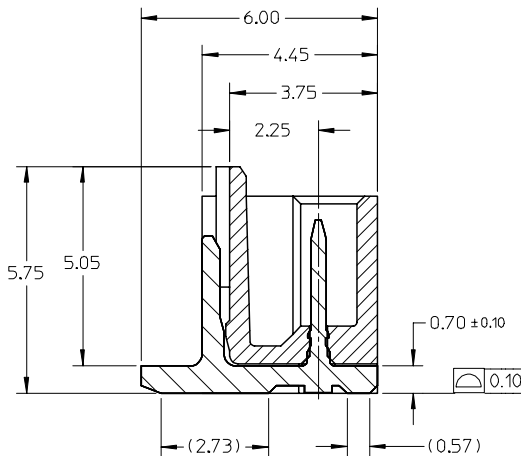
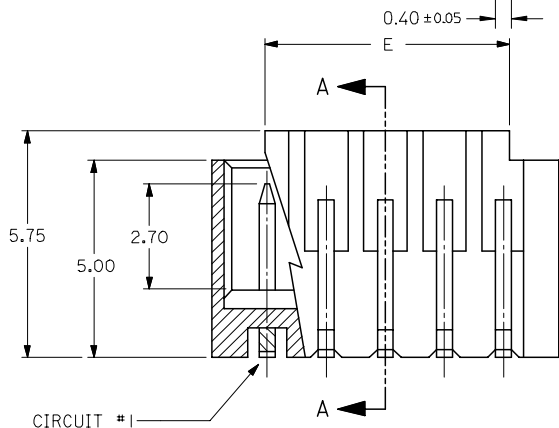
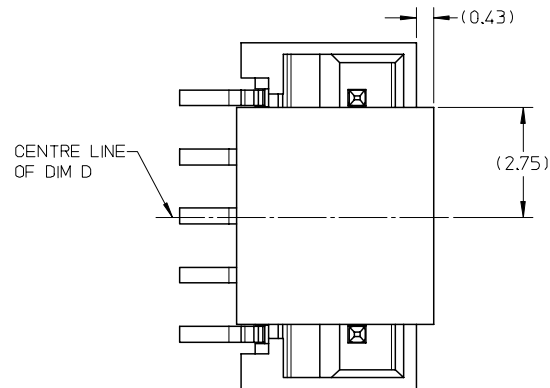
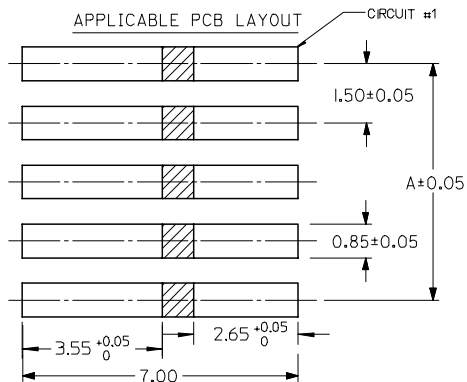
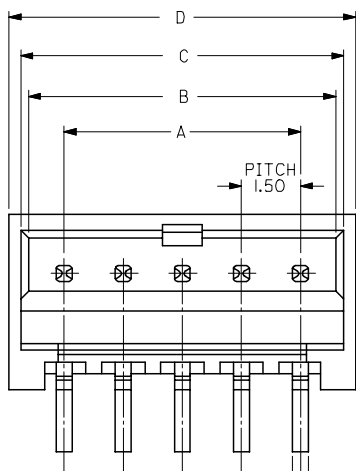
Contact us

Tel: +86-755-8981 8866 Fax: +86-755-8427 6832

Email & Skype: info@chipsmall.com Web: www.chipsmall.com

Address: A1208, Overseas Decoration Building, #122 Zhenhua RD., Futian, Shenzhen, China





SECTION A-A
(WITH CAP)

SECTION A-A
(WITHOUT CAP)

NOTES:

1. MATERIAL:

HOUSING: NYLON, GLASS FILLED, UL94 V-0,
COLOR - SEE TABLE.

CAP: NYLON, GLASS FILLED, UL94V-0
COLOR: BEIGE.

PINS: BRASS ALLOY, C26000, P/N87437-8083.

2. PLATING: 2.54µM. MIN. TIN OVER 1.27µM MIN. NICKEL.

3. DRAWING SHOWS PLUG WITH 5 CIRCUITS.

4. HEADER TO BE USED WITH CRIMP HOUSING, P/N 87439
AND CRIMP TERMINAL, P/N 87421.

5. PARTS TO BE PACKED IN MOISTURE BAG.

ADD MOIST BAG NOTE EC NO: S2007-1049 DRWN:KANG CHKD:ATSEE APPR:MLONG 2007/06/22 2007/06/22 2007/06/22	DESCRIPTION	QUALITY SYMBOLS ▽=0 ▽C=0	GENERAL TOLERANCES (UNLESS SPECIFIED)		DIMENSION STYLE MM ONLY		SCALE NTS	DESIGN UNITS METRIC	THIRD ANGLE PROJECTION				
				mm	INCH	DRAWN BY KCLING	DATE 1994/04/08	TITLE 1.50MM PITCH, W-T-B HEADER, VERTICAL, SMT					
			4 PLACES	± ---	± ---	CHECKED BY SKTOH	DATE 1994/04/21						
			3 PLACES	± ---	± ---	APPROVED BY RWONG	DATE 1994/04/21						
			2 PLACES	± 0.20	± ---	MOLEX MOLEX INCORPORATED							
			1 PLACE	± ---	± ---								
			ANGULAR ± 3 °			MATERIAL NO.		DOCUMENT NO.		SHEET NO.			
			DRAFT WHERE APPLICABLE MUST REMAIN WITHIN DIMENSIONS			SEE TABLE		SD-87437-**31		1 OF 4			
						SIZE A3		THIS DRAWING CONTAINS INFORMATION THAT IS PROPRIETARY TO MOLEX INCORPORATED AND SHOULD NOT BE USED WITHOUT WRITTEN PERMISSION					

