



Chipsmall Limited consists of a professional team with an average of over 10 year of expertise in the distribution of electronic components. Based in Hongkong, we have already established firm and mutual-benefit business relationships with customers from,Europe,America and south Asia,supplying obsolete and hard-to-find components to meet their specific needs.

With the principle of “Quality Parts,Customers Priority,Honest Operation,and Considerate Service”,our business mainly focus on the distribution of electronic components. Line cards we deal with include Microchip,ALPS,ROHM,Xilinx,Pulse,ON,Everlight and Freescale. Main products comprise IC,Modules,Potentiometer,IC Socket,Relay,Connector.Our parts cover such applications as commercial,industrial, and automotives areas.

We are looking forward to setting up business relationship with you and hope to provide you with the best service and solution. Let us make a better world for our industry!



Contact us

Tel: +86-755-8981 8866 Fax: +86-755-8427 6832

Email & Skype: info@chipsmall.com Web: www.chipsmall.com

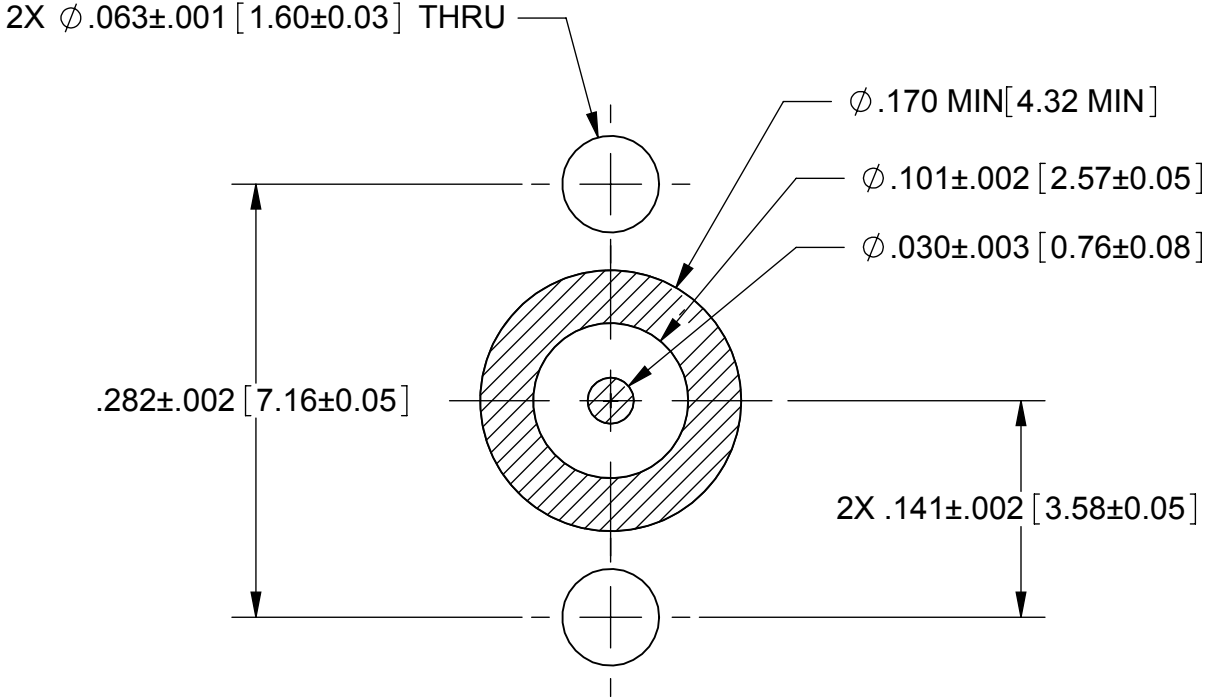
Address: A1208, Overseas Decoration Building, #122 Zhenhua RD., Futian, Shenzhen, China



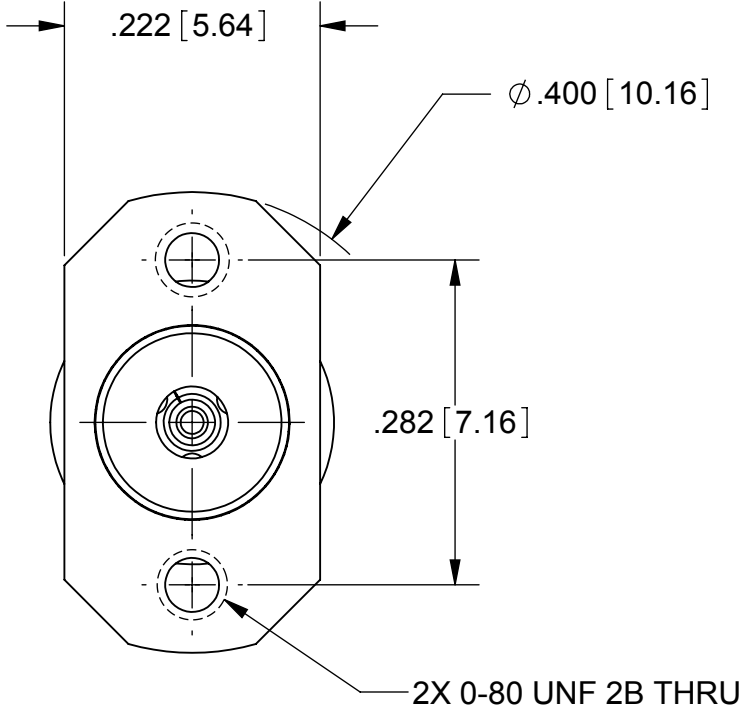
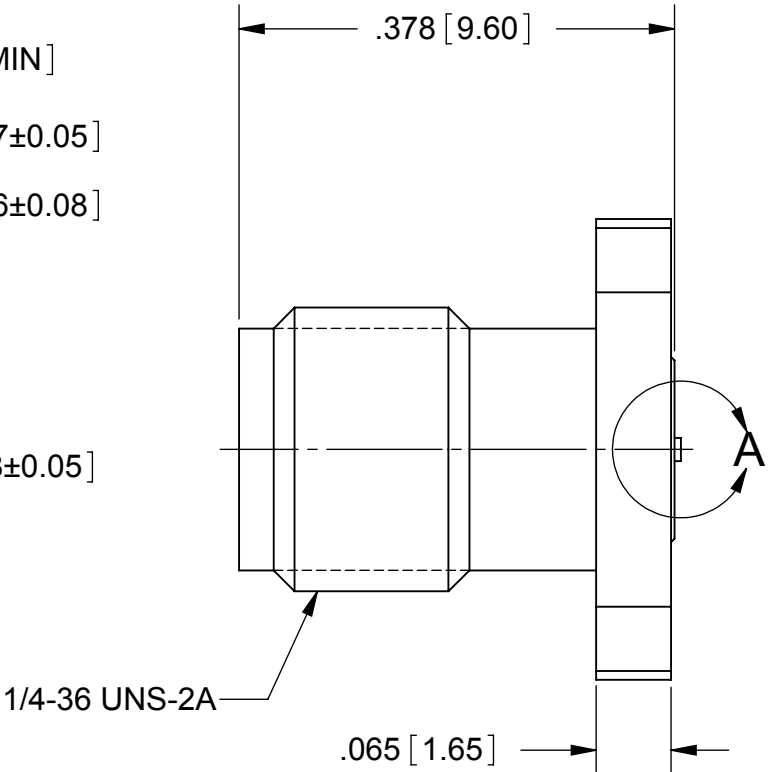
ROHS COMPLIANT

PRODUCT DATA DRAWING

REVISION HISTORY			
REV	DESCRIPTION	DATE	APPROVED
01	PRELIMINARY	08/13	PJS
-	NRN 38351	10/13	STW
A	DCN 41388	06/15	STW



RECOMMENDED PCB LAYOUT



MATERIAL:

BODY & INSERT: STAINLESS STEEL PER AMS-5640,
ALLOY UNS S30300, TYPE 1

CONTACT: BERYLLIUM COPPER PER ASTM B196,
ALLOY No. UNS C17300, TD04

INSULATOR: ULTEM PER ASTM D5205

FINISH:

BODY & INSERT: PASSIVATED PER AMS-2700.

CONTACT: GOLD PER ASTM B488, TYPE II,
CODE C, CLASS 1.27, OVER NICKEL
PER AMS-QQ-N-290, CLASS 1, .00005" MIN.

PERFORMANCE:

IMPEDANCE:	50 OHMS
FREQ. RANGE:	DC TO 40.0 GHz
VSWR:	1.30:1 DC TO 40.0 GHz
INSERTION LOSS:	.05 X SQRT(F(F IN GHz))
DWV:	500 VRMS
ENGAGEMENT/ DISENGAGEMENT:	2 IN-LBS

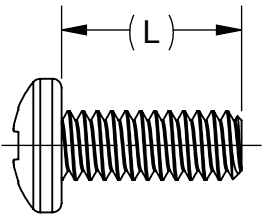
MATERIAL:	SEE NOTES	DIMENSIONS ARE IN INCHES TOLERANCES: FRACTIONAL: ±1/64 ANGULAR: X° ±1'0"
-----------	-----------	--

DETAIL A
SCALE 20 : 1

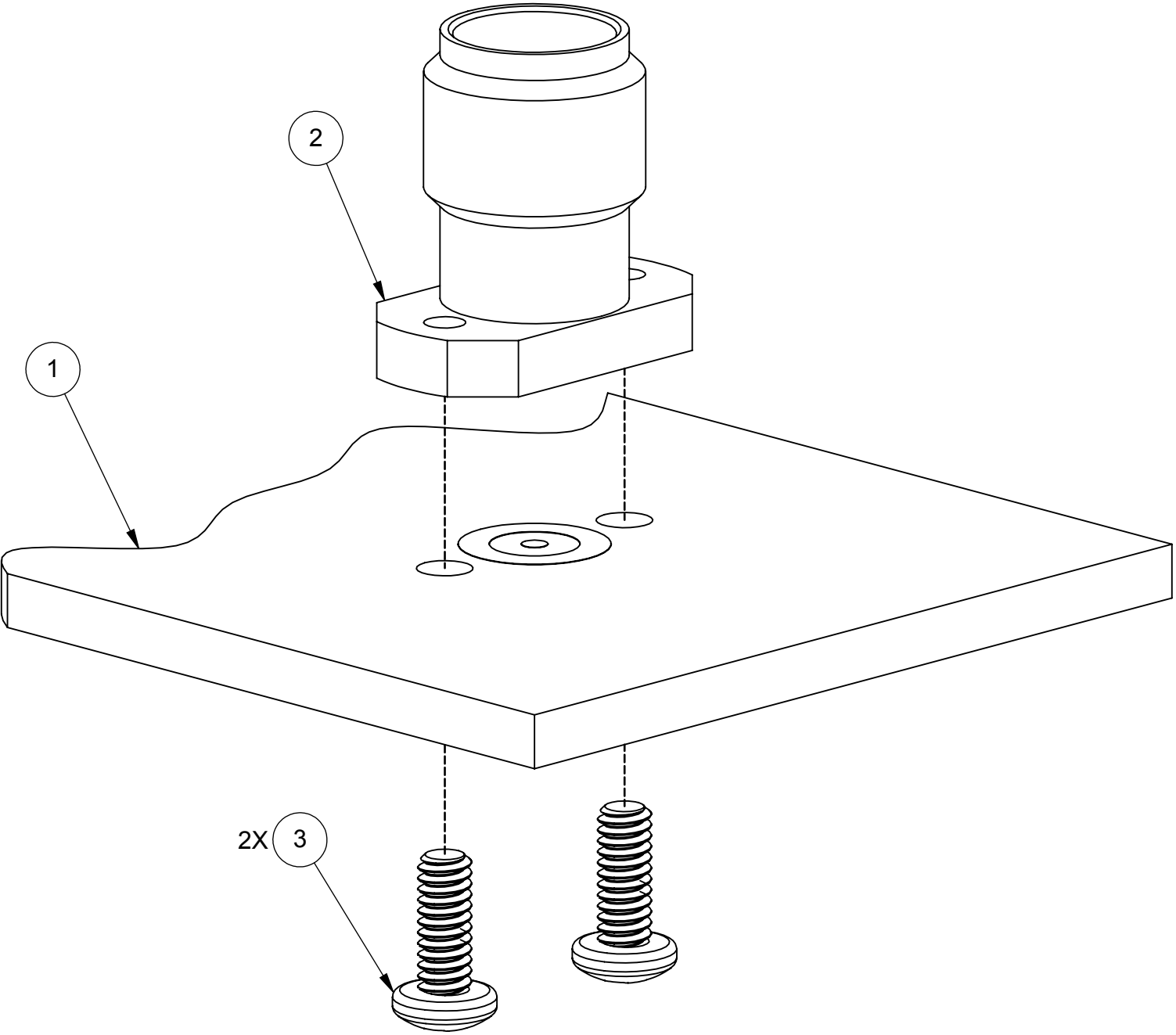
PRODUCT DATA DRAWING

REVISION HISTORY			
REV	DESCRIPTION	DATE	APPROVED
01	PRELIMINARY	08/13	PJS
-	NRN 38351	10/13	STW
A	DCN 41388	06/15	STW

1. PCB
2. 2.92 mm JACK-
ALIGN THREADED SCREW HOLES OF CONNECTOR
WITH MOUNTING HOLES ON THE PCB.
3. MOUNTING SCREWS-
USING #0-80 UNF MACHINE SCREWS, ATTACH 2.92 mm JACK
TO PCB. TIGHTEN SCREWS BETWEEN 0.5-0.8 IN-LBS(FOR
THICKNESS OF .030" AND LARGER). SCREWS NOT TO
PROTRUDE PAST FLANGE MORE THAN .092 INCHES. SEE
TABLE FOR RECOMMENDED SCREW DIMENSIONS.



RECOMMENDED SCREW DIMENSIONS	
L IN [MM]	PCB THICKNESS IN [MM]
.38[9.5]	.170[4.32] TO .295[7.50]
.250[6.35]	.070[1.78] TO .165[4.19]
.190[4.76]	.030[.76] TO .096[2.44]



NOTES:
1. OPERATING TEMPERATURE OF CONNECTOR ON PCB IS 0°C TO +125°C.

MATERIAL:	SEE NOTES	DIMENSIONS ARE IN INCHES TOLERANCES: FRACTIONAL: $\pm 1/64$ ANGULAR: X° $\pm 1^{\circ}0'$ X°X' $\pm 15'$ DECIMAL: .X $\pm .030$.XX $\pm .010$.XXX $\pm .005$ INTERPRET DIMENSIONS AND TOLERANCES PER ASME Y14.5M - 1994	UNLESS OTHERWISE SPECIFIED 1) ALL DIMENSIONS ARE IN INCHES (MILLIMETERS) 2) ALL DIMENSIONS ARE AFTER PLATING. 3) BREAK CORNERS & EDGES .005 R. MAX. 4) CHAM. 1ST & LAST THREADS. 5) SURFACE ROUGHNESS 63-MIL-STD-10. 6) DIA.'S ON COMMON CENTERS TO BE CONCENTRIC WITHIN .005 T.I.R. 7) REMOVE ALL BURRS	SV Microwave, Inc. 2400 Centrepark West Drive, Suite 100 West Palm Beach, FL 33409	
FINISH:	SEE NOTES			TITLE: 2.92MM JACK FL MT W/ 0-80 UNF THD	
SURFACE AREA:	N/A				
PROPRIETARY THE INFORMATION CONTAINED IN THIS DRAWING IS THE SOLE PROPERTY OF SV MICROWAVE, INC. ANY REPRODUCTION IN PART OR AS A WHOLE WITHOUT THE WRITTEN PERMISSION OF SV MICROWAVE, INC IS PROHIBITED.		THIRD ANGLE PROJECTION	DRAWN: PJS 08/16/13	SIZE B	CAGE CODE 95077
			CHECKED:	DWG. NO.	SF1521-60061
			APPROVED:	SCALE: 6:1	SHEET 2 OF 2