



Chipsmall Limited consists of a professional team with an average of over 10 year of expertise in the distribution of electronic components. Based in Hongkong, we have already established firm and mutual-benefit business relationships with customers from,Europe,America and south Asia,supplying obsolete and hard-to-find components to meet their specific needs.

With the principle of “Quality Parts,Customers Priority,Honest Operation,and Considerate Service”,our business mainly focus on the distribution of electronic components. Line cards we deal with include Microchip,ALPS,ROHM,Xilinx,Pulse,ON,Everlight and Freescale. Main products comprise IC,Modules,Potentiometer,IC Socket,Relay,Connector.Our parts cover such applications as commercial,industrial, and automotives areas.

We are looking forward to setting up business relationship with you and hope to provide you with the best service and solution. Let us make a better world for our industry!



## Contact us

Tel: +86-755-8981 8866 Fax: +86-755-8427 6832

Email & Skype: [info@chipsmall.com](mailto:info@chipsmall.com) Web: [www.chipsmall.com](http://www.chipsmall.com)

Address: A1208, Overseas Decoration Building, #122 Zhenhua RD., Futian, Shenzhen, China



DRAWING MADE IN THIRD ANGLE PROJECTION

© COPYRIGHT 1974 BY AMP INCORPORATED, HARRISBURG, PA.  
ALL INTERNATIONAL RIGHTS RESERVED. AMP INCORPORATED PRODUCTS  
COVERED BY U.S. AND FOREIGN PATENTS AND/OR PATENTS PENDING.

206742-1 1. AS SHOWN.

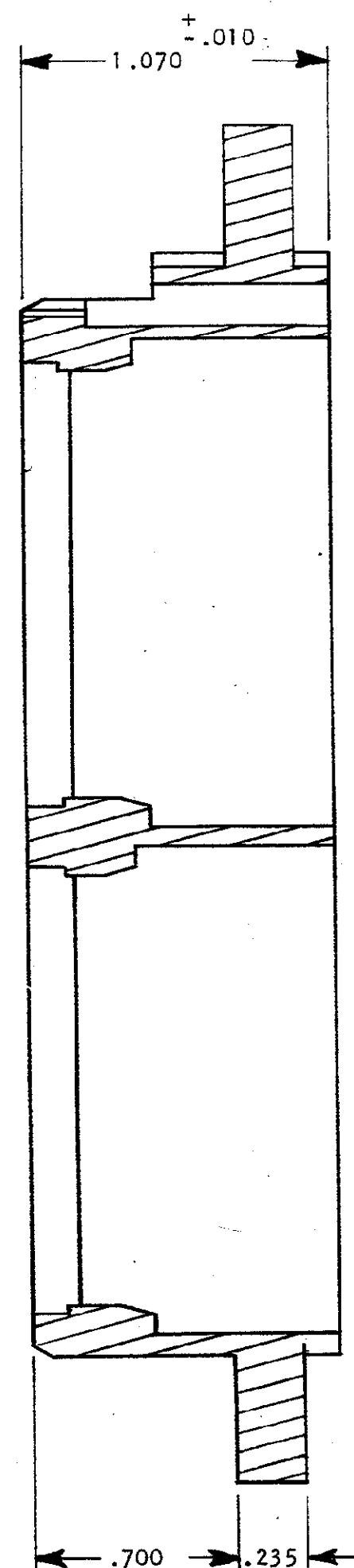
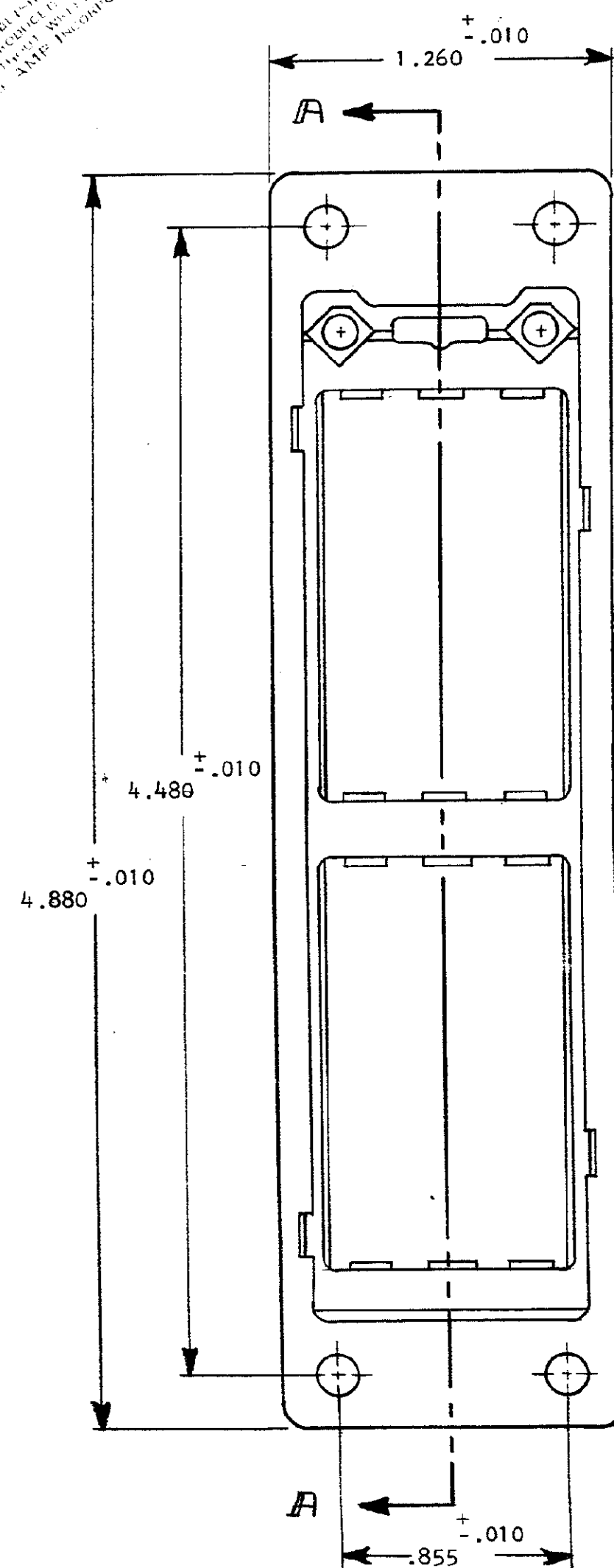
REVISIONS					
P	F	ZONE	DESCRIPTION	DATE	APPROVED
		O	RELEASED	D.S. 7-17-74	DR
		A	REV. PER ECN D-132	PM 8-13-74	DR
AI		A1	REV. PER ECN D-306	D.S. 10-30-74	DR
		B	REMOVED "B" D-585	PM 1/2/75	DR

S  
D

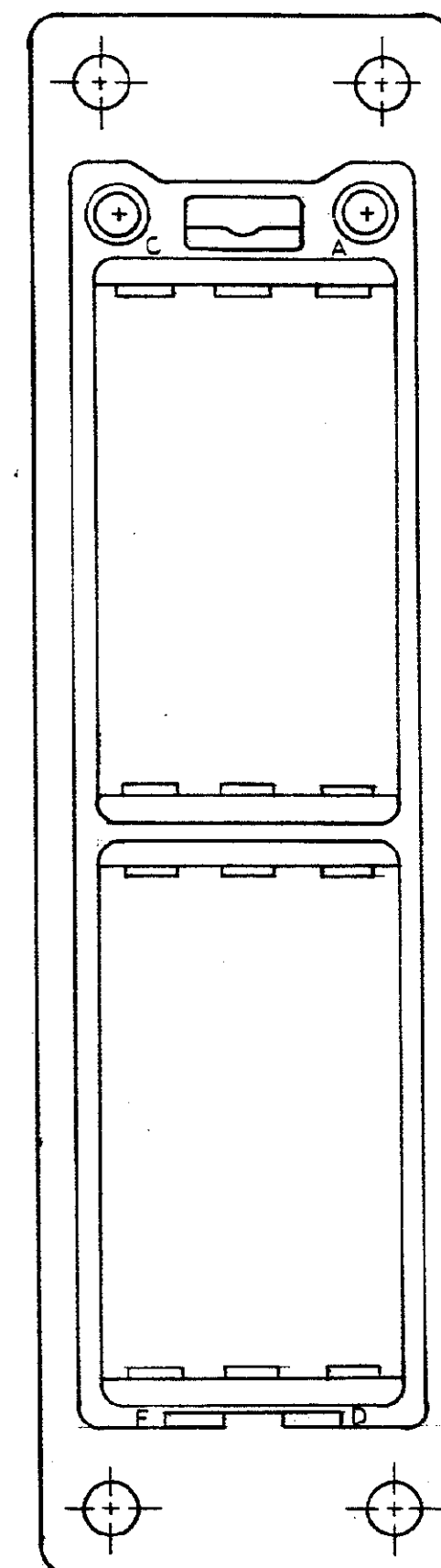
C

B

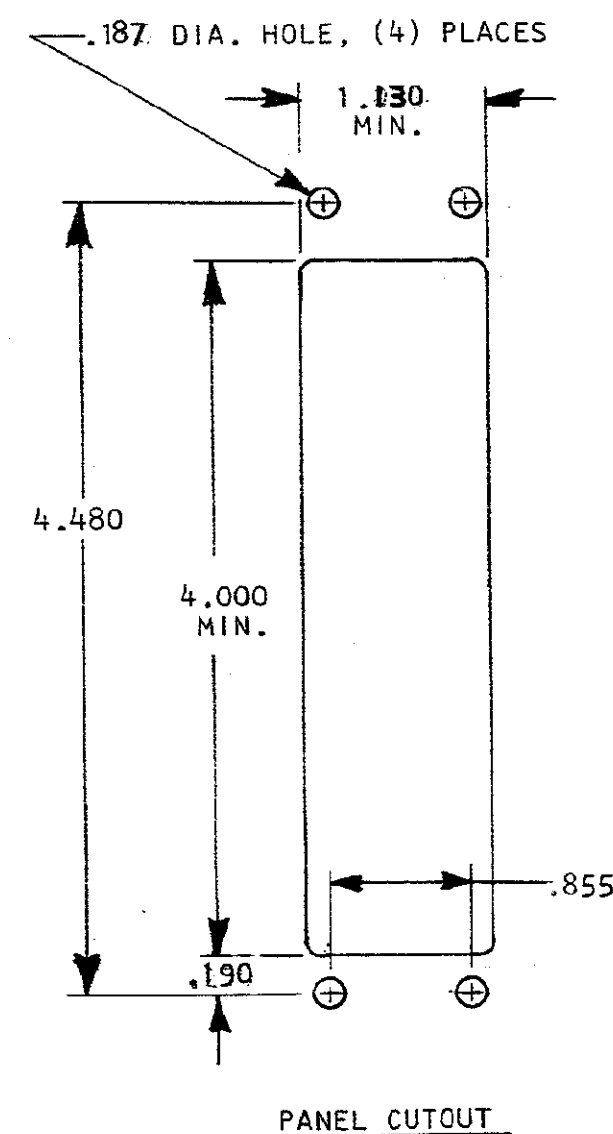
A



SECTION  
A-A



RECEPTACLE HOUSING  
MAT'L.- GLASS REINFORCED  
THERMOPLASTIC,  
COLOR: BLACK



PANEL CUTOUT

CUST. 206742

A

UNLESS OTHERWISE SPECIFIED DIMENSIONS ARE IN INCHES. TOLERANCES ON: DECIMALS $\pm .005$ ANGLES $\pm .1^\circ$		CONTRACT NO DR <i>DES 7-16-74</i>		AMP INCORPORATED Harrisburg, Pa.	
MATERIAL SEE CALL OUT		CHK <i>DR 7-17-74</i>		NAME RECEPTACLE KIT, ZERO ENTRY SIZE II (6, 26 POS. MODULES) SNAP-IN	
FINISH <i>///</i>		APPD <i>DR 7/18/74</i>		SIZE CODE IDENT NO DRAWING NO C 00779 206742	
		APPD <i>DCB 7/18/74</i>		SCALE <i>///</i> "CR" SERIES SHEET 1 OF 1	
		DSGN APPD <i>///</i>			
		OTHER APPD			