



Chipsmall Limited consists of a professional team with an average of over 10 year of expertise in the distribution of electronic components. Based in Hongkong, we have already established firm and mutual-benefit business relationships with customers from,Europe,America and south Asia,supplying obsolete and hard-to-find components to meet their specific needs.

With the principle of “Quality Parts,Customers Priority,Honest Operation,and Considerate Service”,our business mainly focus on the distribution of electronic components. Line cards we deal with include Microchip,ALPS,ROHM,Xilinx,Pulse,ON,Everlight and Freescale. Main products comprise IC,Modules,Potentiometer,IC Socket,Relay,Connector.Our parts cover such applications as commercial,industrial, and automotives areas.

We are looking forward to setting up business relationship with you and hope to provide you with the best service and solution. Let us make a better world for our industry!



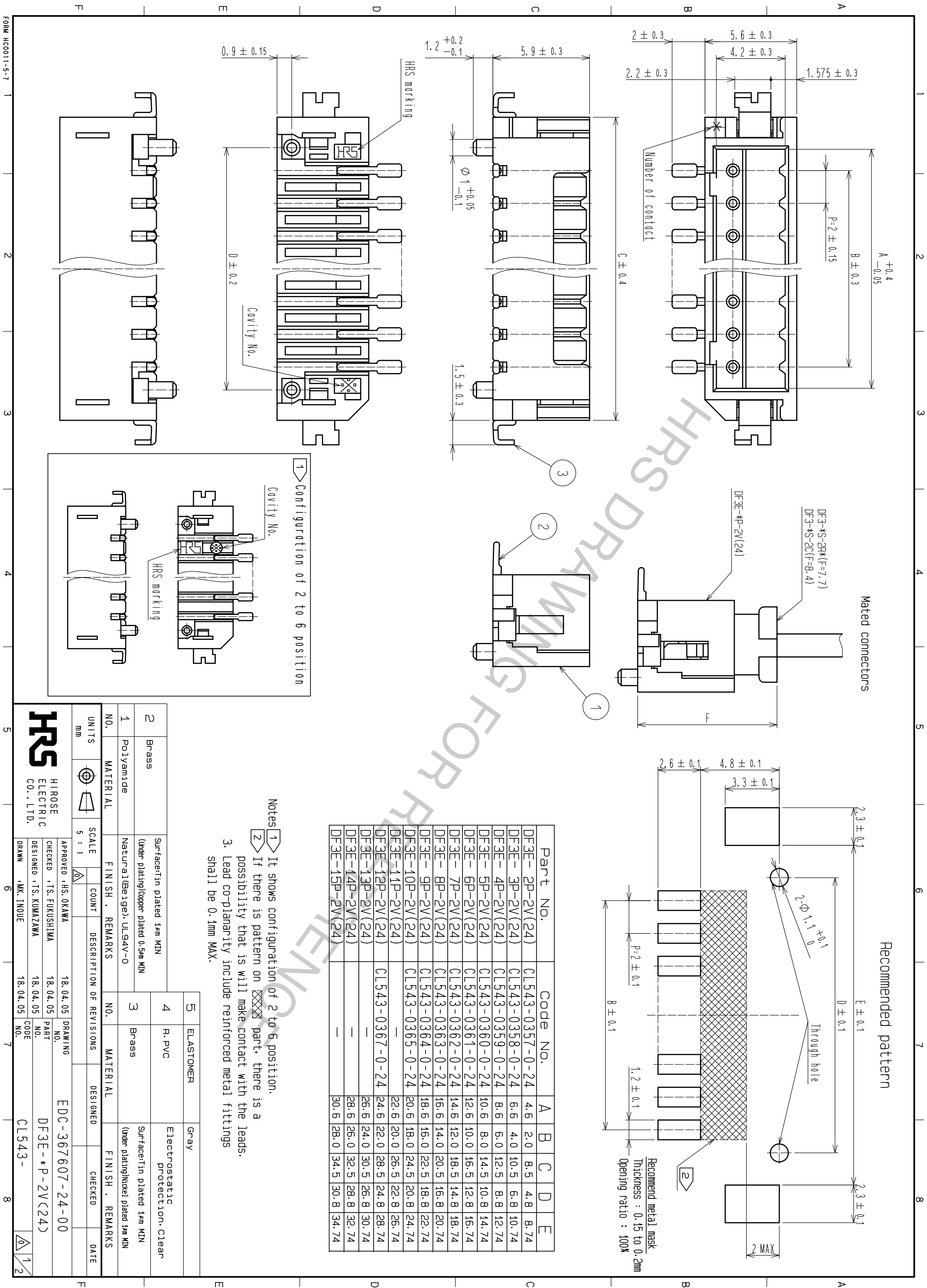
Contact us

Tel: +86-755-8981 8866 Fax: +86-755-8427 6832

Email & Skype: info@chipsmall.com Web: www.chipsmall.com


Address: A1208, Overseas Decoration Building, #122 Zhenhua RD., Futian, Shenzhen, China








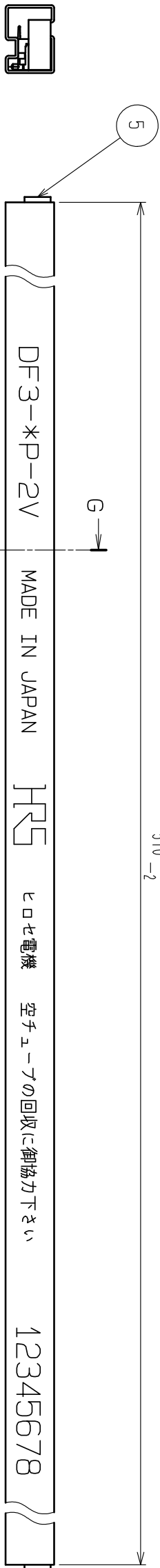
Part No.	Code No.	A	B	C	D	E
DF3E-2P-2V(24)	CL543-0357-0-24	4.6	2.0	8.5	4.8	8.74
DF3E-3P-2V(24)	CL543-0358-0-24	6.6	4.0	10.5	6.8	10.74
DF3E-4P-2V(24)	CL543-0359-0-24	8.6	6.0	12.5	8.8	12.74
DF3E-5P-2V(24)	CL543-0360-0-24	10.6	8.0	14.5	10.8	14.74
DF3E-6P-2V(24)	CL543-0361-0-24	12.6	10.0	16.5	12.8	16.74
DF3E-7P-2V(24)	CL543-0362-0-24	14.6	12.0	18.5	14.8	18.74
DF3E-8P-2V(24)	CL543-0363-0-24	16.6	14.0	20.5	16.8	20.74
DF3E-9P-2V(24)	CL543-0364-0-24	18.6	16.0	22.5	18.8	22.74
DF3E-10P-2V(24)	CL543-0365-0-24	20.6	18.0	24.5	20.8	24.74
DF3E-11P-2V(24)	—	22.6	20.0	26.5	22.8	26.74
DF3E-12P-2V(24)	CL543-0367-0-24	24.6	22.0	28.5	24.8	28.74
DF3E-13P-2V(24)	—	26.6	24.0	30.5	26.8	30.74
DF3E-14P-2V(24)	—	28.6	26.0	32.5	28.8	32.74
DF3E-15P-2V(24)	—	30.6	28.0	34.5	30.8	34.74

Notes 1 It shows configuration of 2 to 6 position.

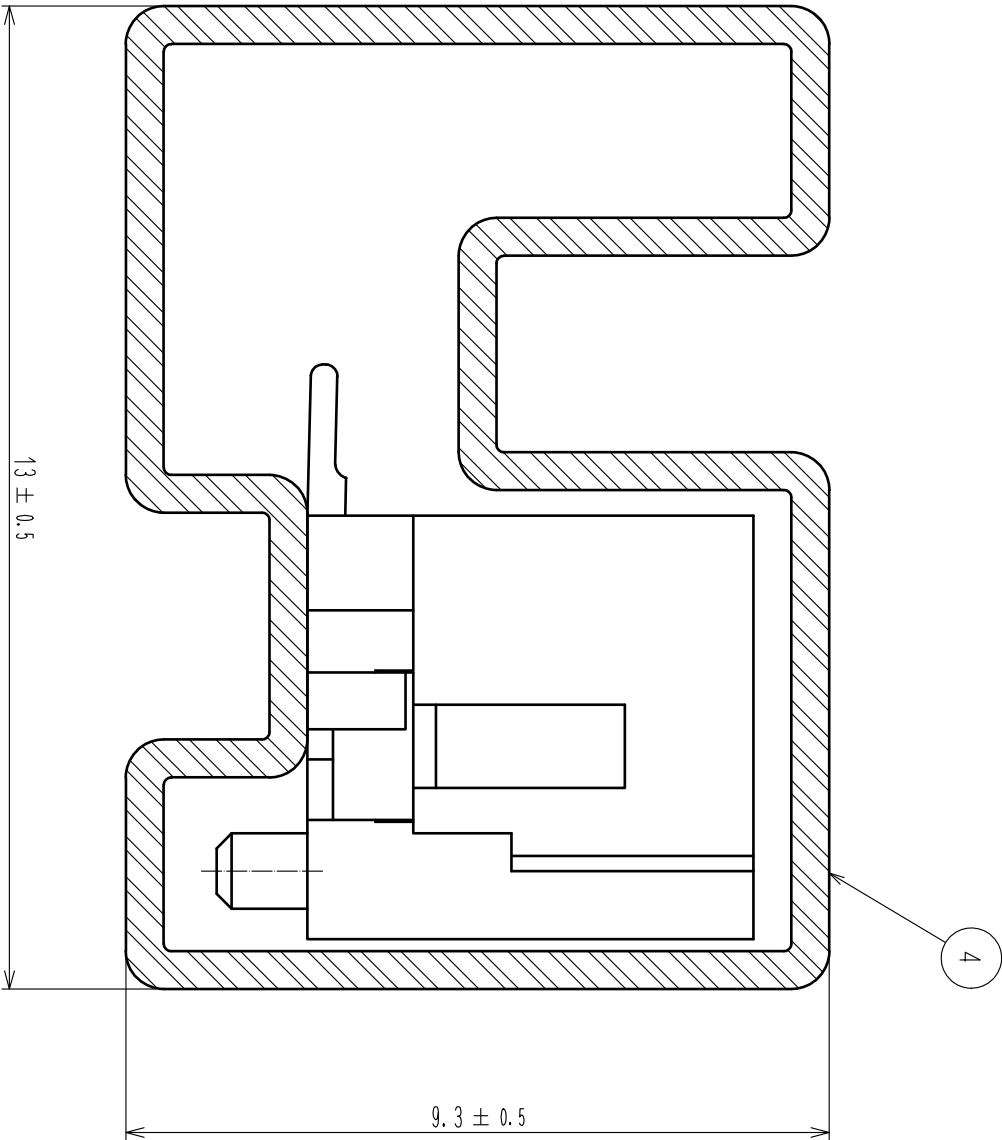
2. If there is pattern on  part, there is a possibility that it will make contact with the leads.

3. Lead co-planarity include reinforced metal fittings shall be 0.1mm MAX.

		5		ELASTOMER		Gray	
		4		R. PVC		Electrostatic protection. Clear	
2		Brass		Surface: Tin plated 1μm MIN (Under plating) Copper plated 0.5μm MIN			
1		Polyamide		Natural (Beige), UL94V-0			
NO.		MATERIAL		FINISH .		REMARKS	
UNITS mm				SCALE 5 : 1			
		APPROVED : HS. OKAWA		18. 04. 05		DRAWING NO.	
		CHECKED : TS. FUKUSHIMA		18. 04. 05		PART NO.	
		DESIGNED : TS. KUMAZAWA		18. 04. 05		CODE	
		DRAWN : MK. INOUE		18. 04. 05		CL543 -	
							
						1 / 2	



G-G (10 : 1)



Notes 4. Number of connectors per a magazine case
shall be in accordance with the list.
5. These connectors shall be on soled in accordance
with the multiple quantity on the list.

Part No.	Code No.	Number of connectors
DF3E- 2P-2V(24)	CL543-0357-0-24	41
DF3E- 3P-2V(24)	CL543-0358-0-24	34
DF3E- 4P-2V(24)	CL543-0359-0-24	30
DF3E- 5P-2V(24)	CL543-0360-0-24	26
DF3E- 6P-2V(24)	CL543-0361-0-24	23
DF3E- 7P-2V(24)	CL543-0362-0-24	21
DF3E- 8P-2V(24)	CL543-0363-0-24	19
DF3E- 9P-2V(24)	CL543-0364-0-24	18
DF3E-10P-2V(24)	CL543-0365-0-24	17
DF3E-11P-2V(24)	—	15
DF3E-12P-2V(24)	CL543-0367-0-24	14
DF3E-13P-2V(24)	—	14
DF3E-14P-2V(24)	—	13
DF3E-15P-2V(24)	—	12

DRAWING NO.		EDC-367607-24-00	
PART NO.		DF3E-*P-2V(24)	
CODE NO.		CL543-	
HRS		<div><div>△</div><div>2</div><div>2</div></div>	