



Chipsmall Limited consists of a professional team with an average of over 10 year of expertise in the distribution of electronic components. Based in Hongkong, we have already established firm and mutual-benefit business relationships with customers from,Europe,America and south Asia,supplying obsolete and hard-to-find components to meet their specific needs.

With the principle of "Quality Parts,Customers Priority,Honest Operation,and Considerate Service",our business mainly focus on the distribution of electronic components. Line cards we deal with include Microchip,ALPS,ROHM,Xilinx,Pulse,ON,Everlight and Freescale. Main products comprise IC,Modules,Potentiometer,IC Socket,Relay,Connector.Our parts cover such applications as commercial,industrial, and automotives areas.

We are looking forward to setting up business relationship with you and hope to provide you with the best service and solution. Let us make a better world for our industry!



Contact us

Tel: +86-755-8981 8866 Fax: +86-755-8427 6832

Email & Skype: info@chipsmall.com Web: www.chipsmall.com

Address: A1208, Overseas Decoration Building, #122 Zhenhua RD., Futian, Shenzhen, China

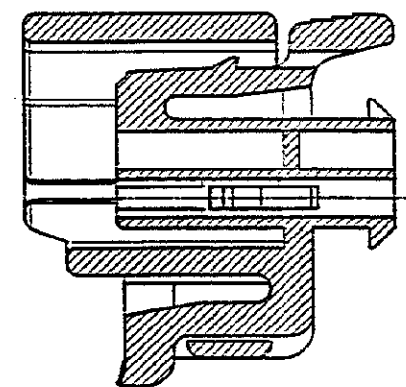
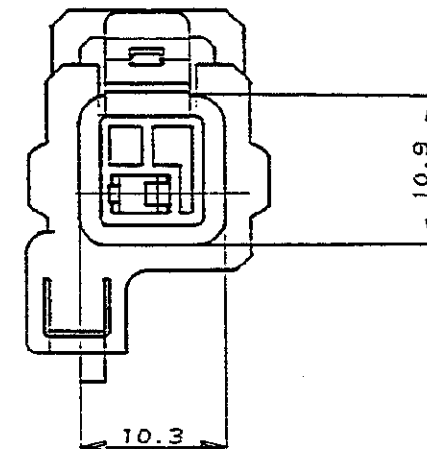
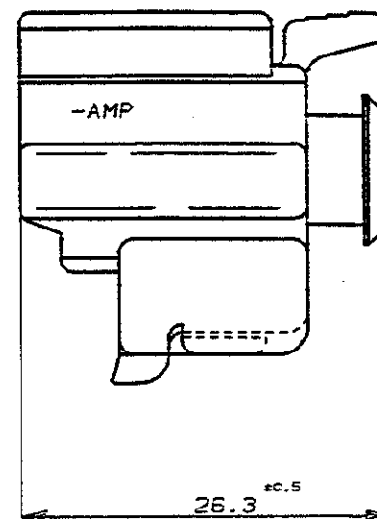
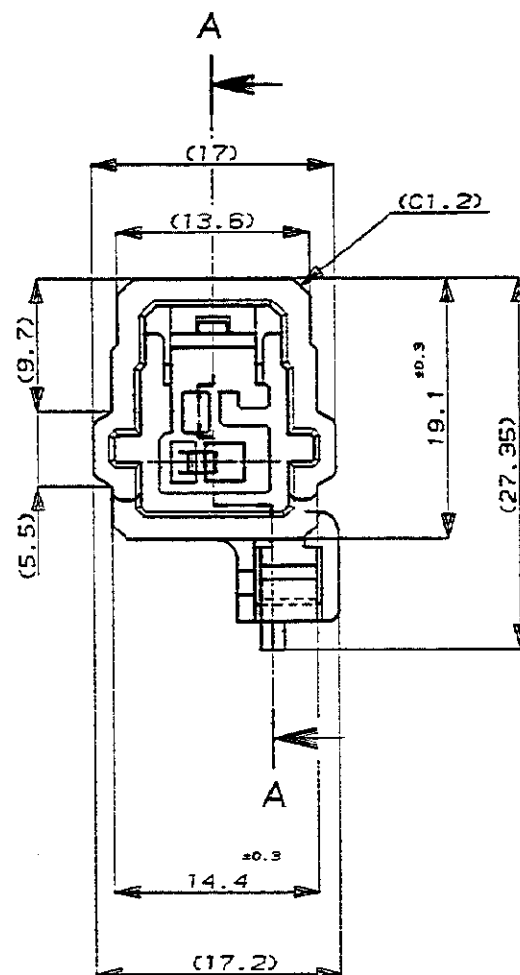


PRINT DIST. DIMENSIONS IN MILLIMETERS. DO NOT SCALE PRINT

METRIC



NUMBER C-175911



断面 A-A
SECT.

NOTES:

- 1 MATING HOUSING PART NUMBERS ARE 175912-5 AND 175920-5
- 2 THIS PRODUCT MUST BE SUPPLIED WITH THE DOUBLE LOCK PLATE P/N 175914-1

注:

1. かん合相手型番
・ 3極キャップハウジング P/N 175912-5
・ 5極キャップハウジング P/N 175920-5
2. 本品は、1極プラグ用ダブルロックプレート P/N 175914-1を装着して使用する。

				Copyright ©1990年 AMP (Japan), LTD. ALL RIGHTS RESERVED.		Copyright ©1990 AMP (Japan), LTD. ALL RIGHTS RESERVED.		AMP		AMP (JAPAN), LTD. Tokyo, Japan			
				WIRE RANGE mm ² (AWG -)		INSULATION DIA mmφ		NAME AIR BAG CONNECTOR 1Pos. PLUG HOUSING エアバッグ コネクタ (非防水) 1極 プラグハウジング (検知用)					
				MATERIAL PBT		COLOR ORANGE だいだい		GENERAL TOLERANCE		SIZE	LOC	NUMBER	
A	REVISED 変更	J-12513	KD	80	4/26/90	DR. F. Fujimori	4/26/90	DE. K. Oda	4/26/90	0<mm 10 : ±0.2 10<mm 30 : ±0.25 30<mm 100 : ±0.3 ANGLES : ±9°	A3		C-175911
O	RELEASED 作成	J-12471	KO	SI	5/8/90	CHK. S. Kobayashi	5/8/90	APP. M. Aoyama	5/8/90	SCALE	REV.	SHEET	
LTR REVISION RECORD				DR	CHK	DATE			2-1		A	1 OF 1	

CUSTOMER DRAWING

-8 本図
-8 AS SHOWN