



Chipsmall Limited consists of a professional team with an average of over 10 year of expertise in the distribution of electronic components. Based in Hongkong, we have already established firm and mutual-benefit business relationships with customers from,Europe,America and south Asia,supplying obsolete and hard-to-find components to meet their specific needs.

With the principle of "Quality Parts,Customers Priority,Honest Operation,and Considerate Service",our business mainly focus on the distribution of electronic components. Line cards we deal with include Microchip,ALPS,ROHM,Xilinx,Pulse,ON,Everlight and Freescale. Main products comprise IC,Modules,Potentiometer,IC Socket,Relay,Connector.Our parts cover such applications as commercial,industrial, and automotives areas.

We are looking forward to setting up business relationship with you and hope to provide you with the best service and solution. Let us make a better world for our industry!



## Contact us

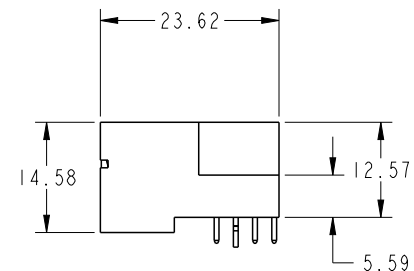
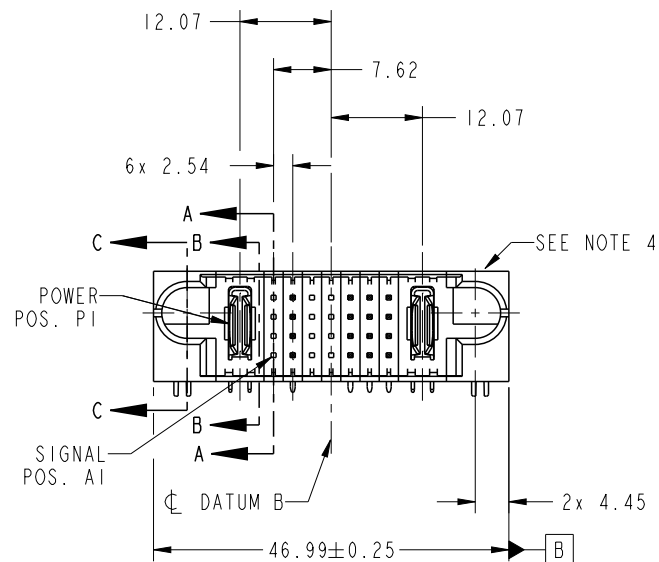
Tel: +86-755-8981 8866 Fax: +86-755-8427 6832

Email & Skype: [info@chipsmall.com](mailto:info@chipsmall.com) Web: [www.chipsmall.com](http://www.chipsmall.com)

Address: A1208, Overseas Decoration Building, #122 Zhenhua RD., Futian, Shenzhen, China



PRODUCT NO.	ROWS	POWER SIGNAL POWER										
		E1	P1	1	2	3	4	5	6	7	P2	E2
51730-219-- NOTE 3	D C B A		PA	XH	XX	XX	XX	HH	U		PA	
				XX	GG	XX	GG	T				
				XX	FF	XX	FF	F				
				XX	EE	XX	EE	E				



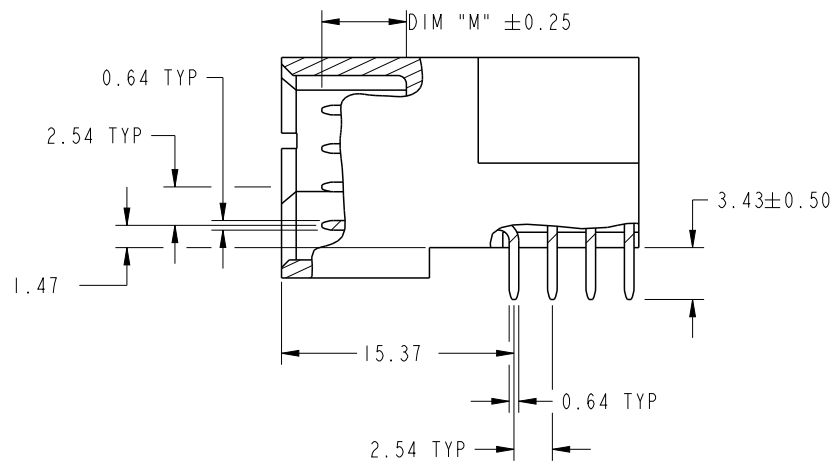
CODE	DIM "M" MATING LENGTH	CONTACT TYPE
H	[5.59]	SIGNAL
G	[5.59]	SIGNAL
F	[5.59]	SIGNAL
E	[5.59]	SIGNAL
T	[6.86]	SIGNAL
U	[6.86]	SIGNAL
PA	[N/A]	POWER
HA	[N/A]	HOLD-DOWN
X	[N/A]	OMITTED

spec ref		*		dr	Luo Weller	2014/02/11	<div>projection</div> <div></div>	<div>MM</div> <div></div>	size	A4	scale	1:1			
tolerance std	TOLERANCES UNLESS OTHERWISE SPECIFIED			eng	Luo Weller	2014/02/21			ecn no	-					
				chr	-	-			product family	PwrBlade	rel level	Released			
				appr	Pei-Ming Zheng	2014/02/21									
ASME Y14.5															
surface	<div>✓</div>	linear	0.X	±0.5	<div></div>	title			IP + 28S + IP			dwg no	51730-219	rev	
			0.XX	±0.25											
			0.XXX	±0.1											
ASME Y14.5	angular	0°	±2°	www.fci.com	cat. no.			-	Product - Customer Drw			sheet 1 of 4			
															A

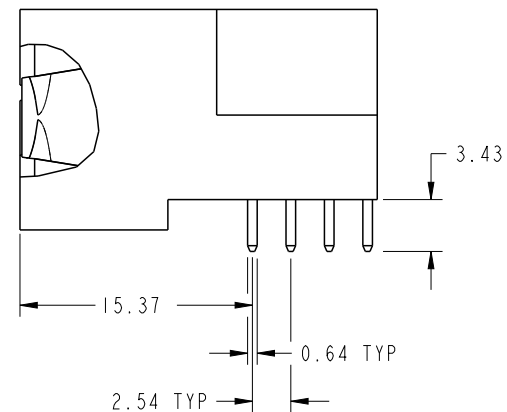
PrintE File - REV C - 2009-06-09

PRODUCT NUMBER

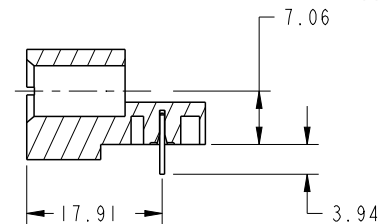
51730-219--  
NOTE: 3



BROKEN-OUT SECTION A-A  
SCALE 2:1



BROKEN-OUT SECTION B-B  
SCALE 2:1

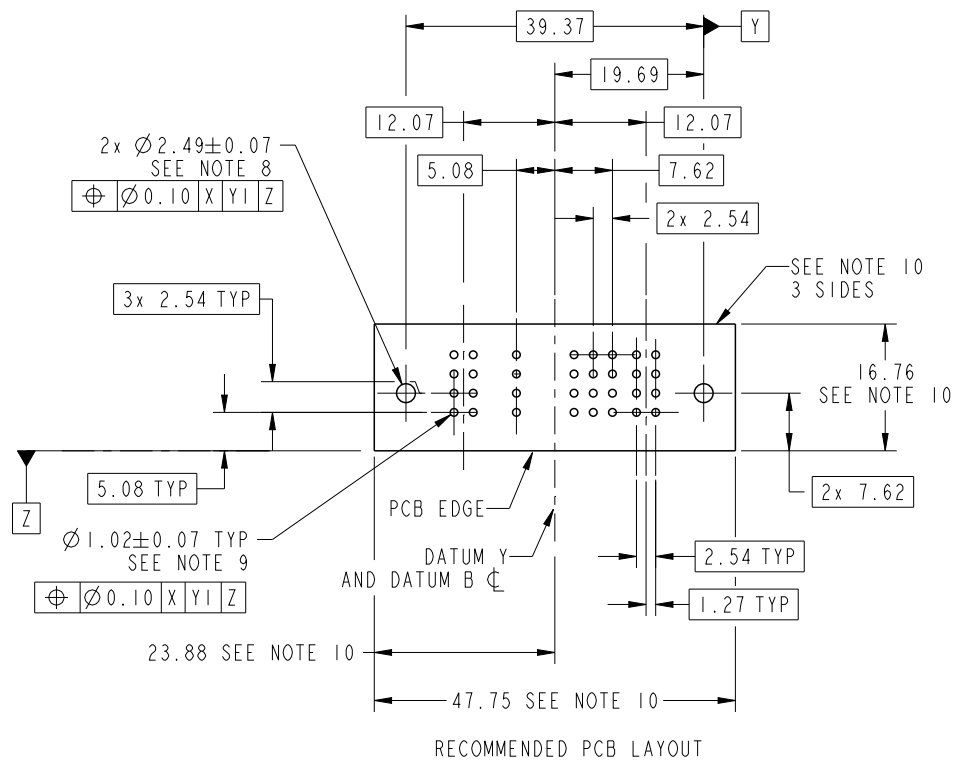


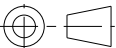


SECTION C-C

dr	Luo Weller	2014/02/11	projection	MM	size	A4	scale	1:1
eng	Luo Weller	2014/02/21			ecn no	-		
chr	-	-			rel level	Released		
appr	Pei-Ming Zheng	2014/02/21	product family	PwrBlade				
		title			IP + 28S + IP	dwg no	51730-219	rev
www.fci.com		cat. no.			-	Product - Customer Drw		sheet 2 of 4
								A

# PRODUCT NUMBER

51730-219--  
NOTE: 3



dr	Luo Weller	2014/02/11	<div>projection</div> <div></div>	<div>MM</div> <div></div>	size	A4	scale	1:1
eng	Luo Weller	2014/02/21			ecn no		-	
chr	-	-			rel level			
appr	Pei-Ming Zheng	2014/02/21	product family		PwrBlade			
		title			IP + 28S + IP		dwg no	
					RIGHT ANGLE SOLDER HEADER		51730-219	
							rev	
							A	
www.fci.com		cat. no.		-		Product - Customer Drw		sheet 3 of 4



Copyright FCI.

PRODUCT NUMBER  
51730-219--  
NOTE: 3

NOTES:

1. DIMENSIONS AND TOLERANCES ARE IN ACCORDANCE WITH  
ASME Y14.5M, 1994 UNLESS OTHERWISE SPECIFIED.

CONNECTOR NOTES:

- 2. HOUSING MATERIAL: UL 94 V-0 GLASS FILLED HIGH-TEMP THERMOPLASTIC  
POWER CONTACT MATERIAL: COPPER ALLOY  
SIGNAL PIN MATERIAL: COPPER ALLOY
  - 3. SEE ITEM 1 & 2 IN PRINT 10064183 FOR PLATING SPEC OF 51730-219 AND 51730-219LF RESPECTIVELY.
  - 4. MANUFACTURER'S NAME, DATE CODE AND OPTIONAL P/N TO APPEAR ON  
THIS SURFACE. THE MARK CAN BE OMITTED IF THERE IS NOT ENOUGH  
SPACE ON THIS SURFACE.
  - 5. PRODUCT SPECIFICATION GS-12-149.  
APPLICATION SPECIFICATION BUS-20-067.
  - 6. PACKAGED IN TRAYS.
- PCB NOTES:
- 7. ALL HOLE DIAMETERS ARE FINISHED HOLE SIZE.
  - 8. MOUNTING HOLES, WHERE APPLICABLE, ARE UNPLATED.
  - 9.  $\varnothing 1.151 \pm 0.025$  DRILLED HOLES PLATED WITH  
0.008 MIN SnPb OR Sn OVER 0.03  
TO 0.08 Cu PLATING TO ACHIEVE  
 $\varnothing 1.02 \pm 0.07$  HOLE.
  - 10. CONNECTOR KEEP-OUT ZONE.

dr	Luo Weller	2014/02/11	<div>projection</div>	<div>MM</div>	size	A4	scale	1:1
eng	Luo Weller	2014/02/21			ecn no	-		
chr	-	-						
appr	Pei-Ming Zheng	2014/02/21	product family		PwrBlade	rel level		Released
	title				IP + 28S + IP		dwg no	
	RIGHT ANGLE SOLDER HEADER				51730-219		rev	
							A	
www.fci.com	cat. no.		-	Product - Customer Drw			sheet 4 of 4	