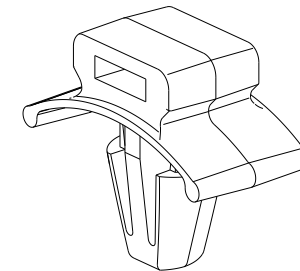
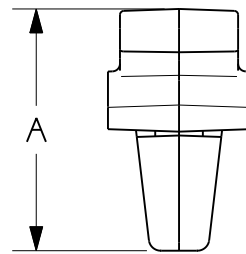
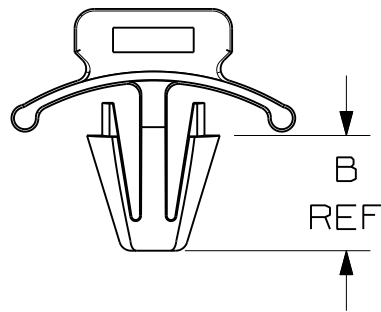
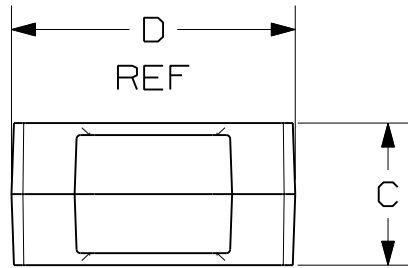


THIS COPY IS PROVIDED ON A RESTRICTED BASIS AND IS NOT TO BE USED IN ANY WAY DETRIMENTAL TO THE INTERESTS OF PANDUIT CORP.

PANDUIT PART NO.	USE WITH THESE CABLE TIE CROSS-SECTIONS	DIMENSIONS				WEIGHT lbs/100pcs (g)
		A	B	C	D	
PWMS-H25	MINIATURE INTERMEDIATE STANDARD	.62 (15.7)	.31 (8.0) REF	.37 (9.3)	.71 (18.0) REF	0.13 (60)



NOTES:

- SEE WWW.PANDUIT.COM FOR PART NUMBER SUFFIX DESIGNATION FOR PACKAGE SIZE, MATERIAL AND COLOR.
- (\* ) DIMENSIONAL VARIANCE IS POSSIBLE DUE TO MOLDING PROCESS RELATED SINK MARKS.
- APPLICATION SPECIFICATION:  
HOLE DIAMETER: .229 (5.8) - .255 (6.5)  
PANEL THICKNESS: .105 (2.7) (MAX)

DIMENSIONS IN BRACKETS ARE METRIC [ mm ]	
CAD FILENAME/LAYERS 10B015CG/00A_DC-GB0239EW_REV07	
<b>PANDUIT</b> CORP. TINLEY PARK, ILLINOIS	
PUSH WING MOUNT PWMS-H25	
UNLESS OTHERWISE SPECIFIED, DIMENSIONAL TOLERANCES ARE: (.X) ±0.05 (1.3) (.XXX) ±0.010 (0.25) (.XX) ±0.02 (0.5) ANGLES ±5°	UNLESS OTHERWISE SPECIFIED, ALL DIMENSIONS ARE GIVEN IN INCHES, THIRD ANGLE PROJECTION.
DRAWN BY <b>CGSM</b>	MAT'L: <b>NYLON</b>
DATE <b>3-6-97</b>	SCALE <b>2:1</b>
CHK'D	DRAWING NO. <b>GB0239EW</b>
	DWG SIZE <b>A</b>

REV	DATE	BY	CHK	DESCRIPTION	ECN	R	CUST	SUP
7	12/17/10	BWG	MJVE	REVISED NOTE 1. MAT'L WAS NYLON 6/6.	GB0239EW	7	PBC	