



Chipsmall Limited consists of a professional team with an average of over 10 year of expertise in the distribution of electronic components. Based in Hongkong, we have already established firm and mutual-benefit business relationships with customers from,Europe,America and south Asia,supplying obsolete and hard-to-find components to meet their specific needs.

With the principle of “Quality Parts,Customers Priority,Honest Operation,and Considerate Service”,our business mainly focus on the distribution of electronic components. Line cards we deal with include Microchip,ALPS,ROHM,Xilinx,Pulse,ON,Everlight and Freescale. Main products comprise IC,Modules,Potentiometer,IC Socket,Relay,Connector.Our parts cover such applications as commercial,industrial, and automotives areas.

We are looking forward to setting up business relationship with you and hope to provide you with the best service and solution. Let us make a better world for our industry!



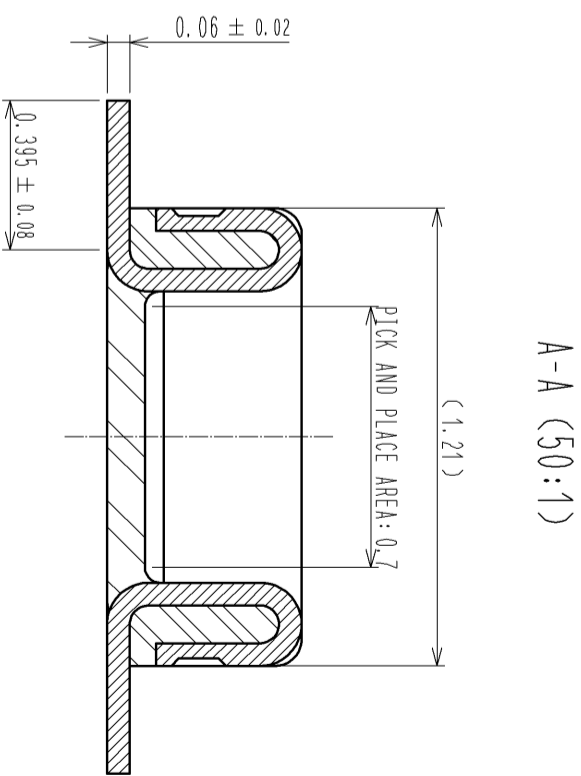
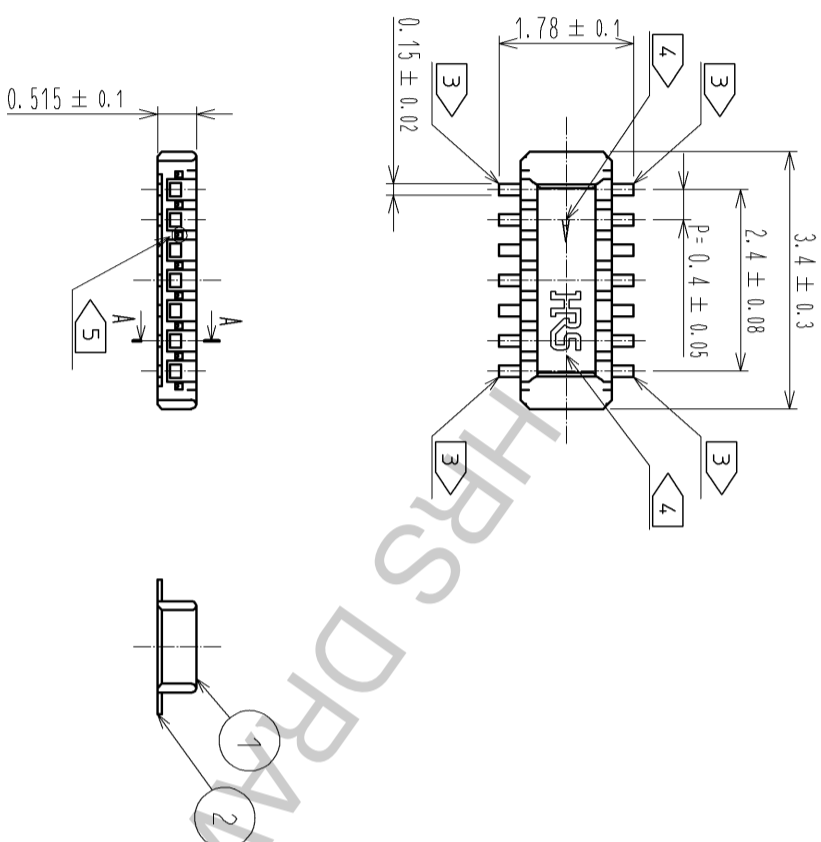
Contact us

Tel: +86-755-8981 8866 Fax: +86-755-8427 6832

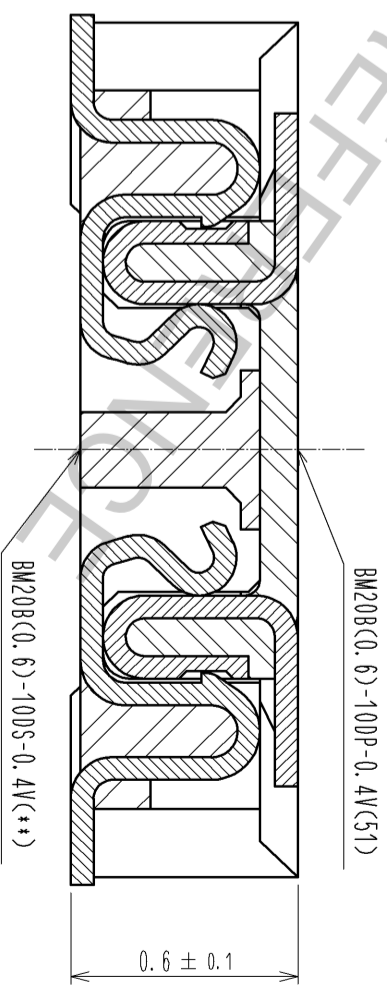
Email & Skype: info@chipsmall.com Web: www.chipsmall.com

Address: A1208, Overseas Decoration Building, #122 Zhenhua RD., Futian, Shenzhen, China





ENGAGEMENT FIGURE (50:1)



NOTE 1. ALL LEAD CO-PLANARITY SHALL BE 0.08mm MAX

2. CONTACT PLATING SPECIFICATIONS

CONTACT AREA : GOLD 0.05 μ m MIN

SMT LEAD : GOLD 0.05 μ m MIN



UNDER PLATING : NICKEL 1 μ m MIN

(SURFACE : SEALING)

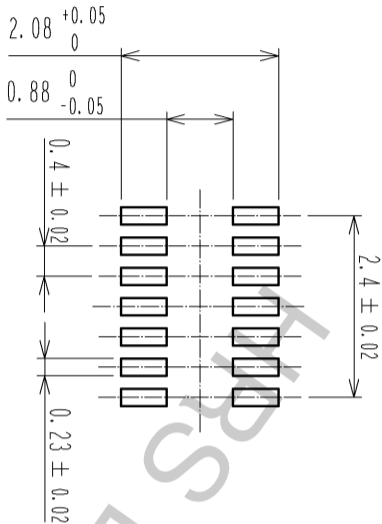
EACH CONTACTS AT 4 CORNERS ARE PROVIDED FOR METAL FITTINGS.

HRS MARK AND CAV NO. ARE INDICATED IN APPROX POSITION SHOWN.

A PART OF THE WALL COULD BE NOTCHED.

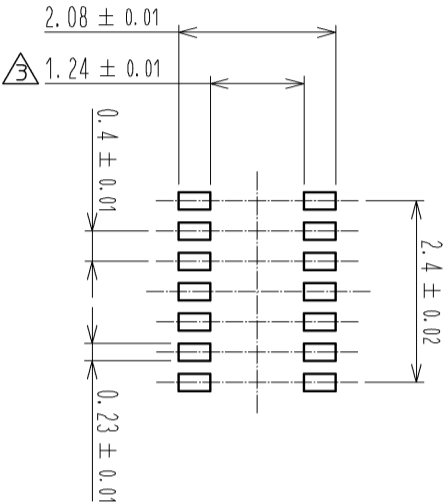
3	PS	CLEAR (EMBOSSED CARRIER TAPE)	6	PS	CLEAR (REINFORCEMENT COLLAR)
2	PHOSPHOR BRONZE	<div style="border: 1px solid black; padding: 2px;">2</div>	5	PS	BLACK (PLASTIC REEL)
1	LCP	UL94 V-0, BLACK	4	POLYESTER	CLEAR (COVER TAPE)
NO.	MATERIAL	FINISH . REMARKS	NO.	MATERIAL	FINISH . REMARKS
UNITS mm	<div style="text-align: center;"> </div>	SCALE 10 : 1	COUNT 1	DESCRIPTION OF REVISIONS	DESIGNED KR. AII TO
APPROVED : KH. IKEDA				DRAWING NO.	EDC3-347087-51
CHECKED : WR. FUKUCHI				PART NO.	BM20B(0.6)-10DP-0.4V(C51)
DESIGNED : RT. SHIMIZU				CODE	CL684-9300-6-51
DRAWN : RT. SHIMIZU				DATE	13.10.09

◆RECOMMENDED PCB LAYOUT

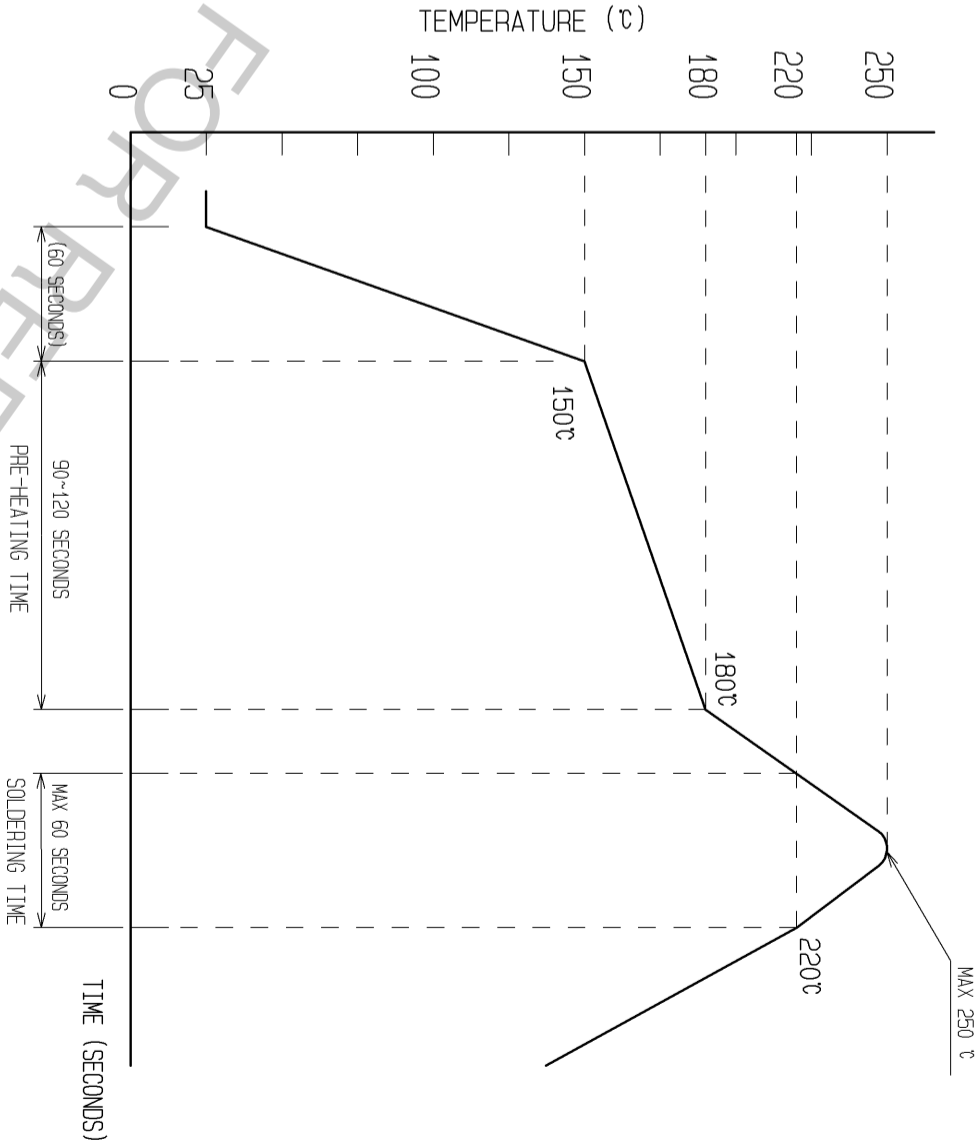


◆RECOMMENDED METAL MASK DIMENSIONS

METAL MASK THICKNESS : $100 \mu\text{m}$



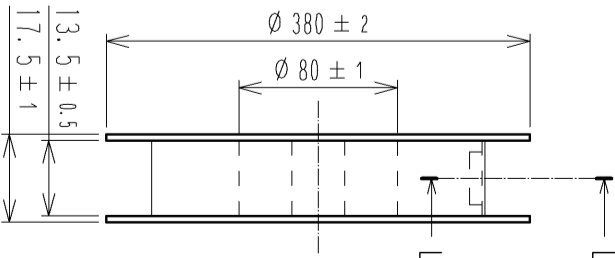
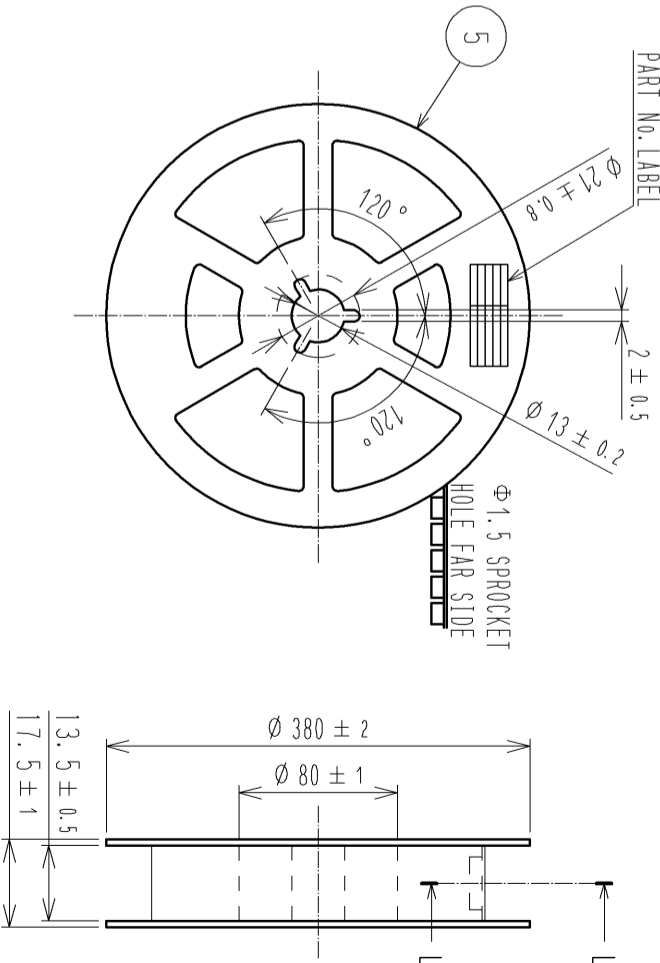
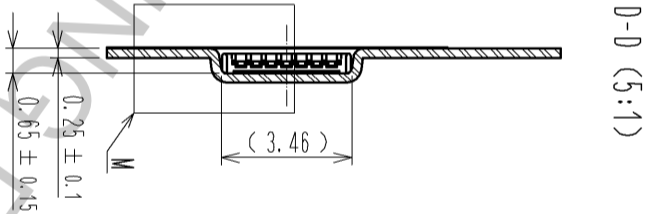
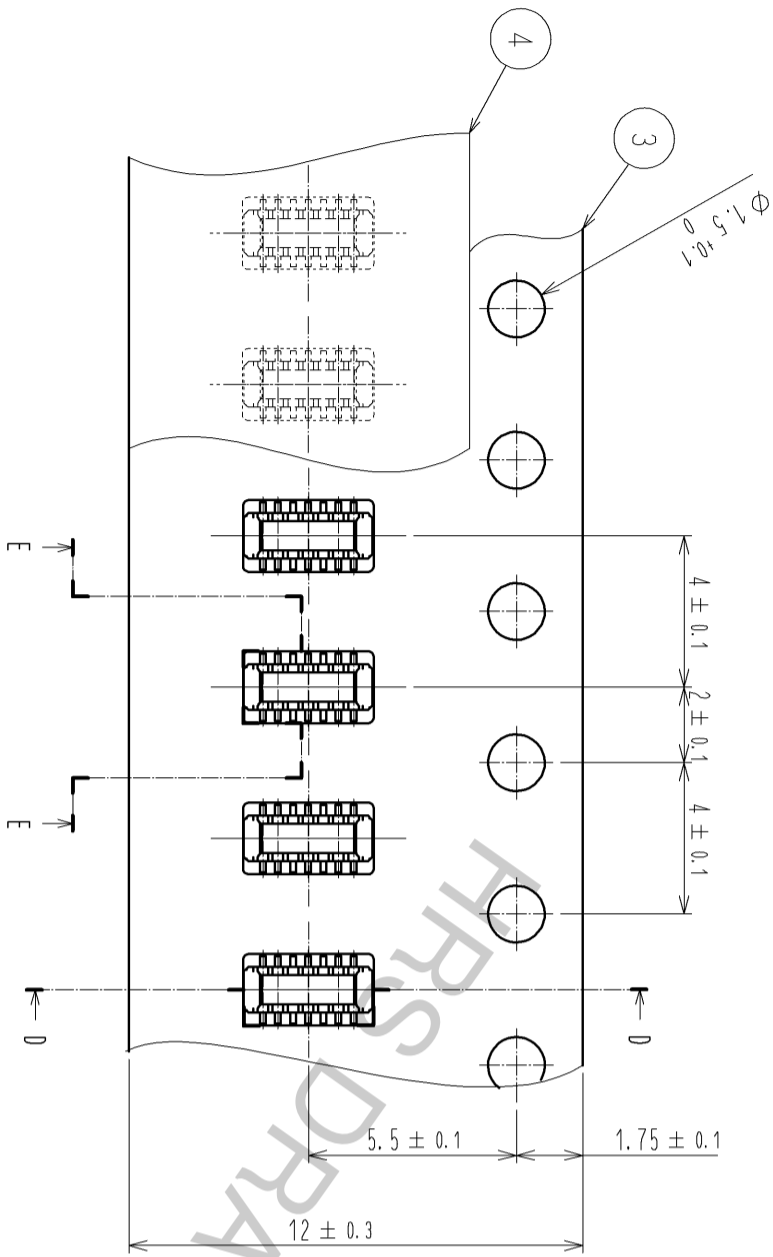
6>RECOMMENDED REFLOW TEMPERATURE PROFILE
USING LEAD-FREE SOLDER PASTE.



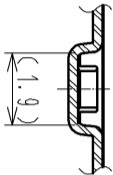
REFLOW METHOD: IR REFLOW
NUMBER OF REFLOW CYCLES: 2 CYCLES MAX.
1) REFLOW TIME
DURATION ABOVE 220°C: 60 SEC MAX.
(PEAK TEMPERATURE: 250°C MAX)
2) PRE-HEAT TIME
PRE-HEAT TEMPERATURE (MIN): 150°C
PRE-HEAT TEMPERATURE (MAX): 180°C
PRE-HEAT TIME: 90-120 SEC.

6> THIS TEMPERATURE PROFILE IS PER THE CONDITIONS SHOWN ABOVE.
ADDITIONAL FACTORS, SUCH AS SOLDER PASTE TYPE, PCB SIZE AND
OTHER MOUNTED COMPONENTS COULD AFFECT THE PROFILE. THEREFORE,
A THOROUGH EVALUATION OF MOUNTING CONDITION IS REQUIRED
PRIOR TO PRODUCTION. TEMPERATURE IS MEASURED AT CONTACT LEAD.

EMBOSSED CARRIER TAPE PACKAGING (5:1)



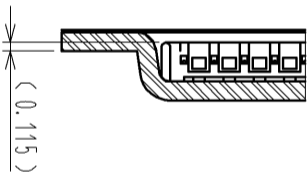
E-E (5:1)



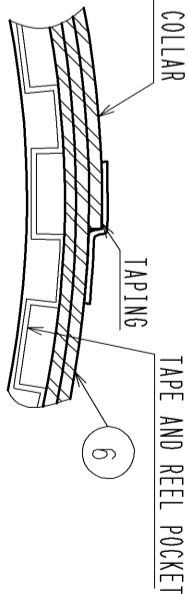
DIRECTION OF UNREELING



M (10:1)



L-L (FREE)



DETAIL OF PART NO. LABEL

製造年月日	*** **
製品コード	CL684-9300-6-51
製品名	BM20B(0.6)-10DP-0.4V(51)
数量	8,000
納入者	ヒロセ電機(株)

DATE OF MANUFACTURED

CODE NO.

PART NO.

QUANTITY

SUPPLIER

7. PER REEL 8000 CONNECTORS.

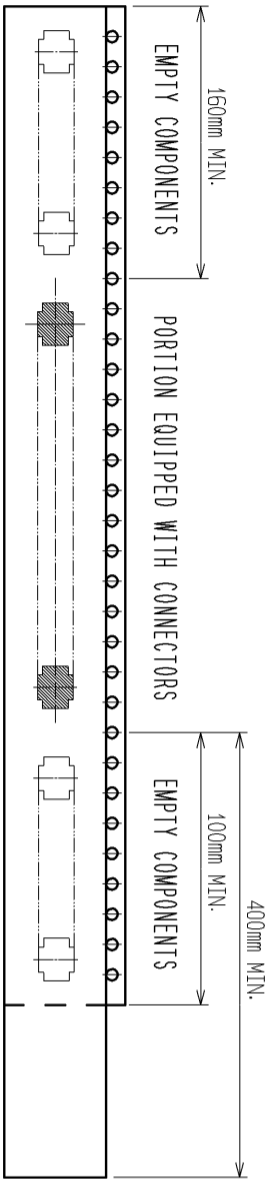
8. THE DIMENSIONS IN PARENTHESES ARE FOR REFERENCE.

9. REFER TO JIS C 0806(PACKAGING OF COMPONENTS FOR AUTOMATIC HANDLING) AFTER PACKAGING, ROLL 2 METERS OF THE REINFORCEMENT COLLAR TO OUTER CIRCUMFERENCE OF TAPE AND REEL POCKET. AND TAPE DOWN AT THE END THE COLLAR.

TRAILER

9 TAPING(FREE)

LEADER



HR5

DRAWING NO.	EDC3-347087-51
PART NO.	BM20B(0.6)-10DP-0.4V(51)
CODE	CL684-9300-6-51