



Chipsmall Limited consists of a professional team with an average of over 10 year of expertise in the distribution of electronic components. Based in Hongkong, we have already established firm and mutual-benefit business relationships with customers from,Europe,America and south Asia,supplying obsolete and hard-to-find components to meet their specific needs.

With the principle of “Quality Parts,Customers Priority,Honest Operation,and Considerate Service”,our business mainly focus on the distribution of electronic components. Line cards we deal with include Microchip,ALPS,ROHM,Xilinx,Pulse,ON,Everlight and Freescale. Main products comprise IC,Modules,Potentiometer,IC Socket,Relay,Connector.Our parts cover such applications as commercial,industrial, and automotives areas.

We are looking forward to setting up business relationship with you and hope to provide you with the best service and solution. Let us make a better world for our industry!



## Contact us

Tel: +86-755-8981 8866 Fax: +86-755-8427 6832









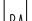

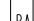



Email & Skype: [info@chipsmall.com](mailto:info@chipsmall.com) Web: [www.chipsmall.com](http://www.chipsmall.com)

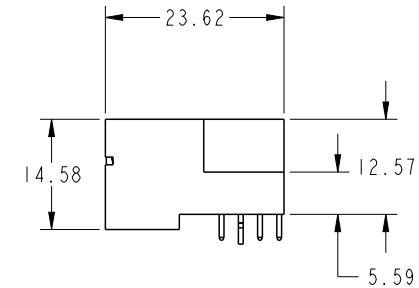
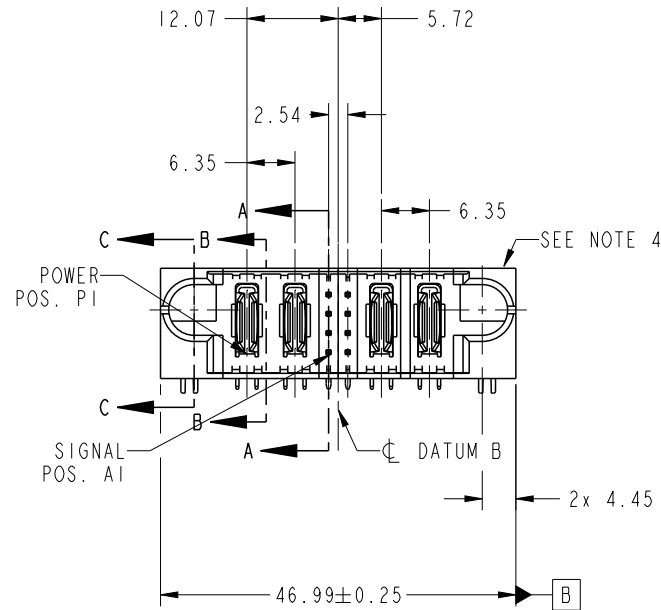
Address: A1208, Overseas Decoration Building, #122 Zhenhua RD., Futian, Shenzhen, China



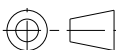




Copyright FCI.

PRODUCT NO.	ROWS		POWER		GN		POWER		
		E1	P1	P2	1 2	P3	P4	E2	
51730-213-- NOTE 3	D C B A								
									



CODE	DIM "M" MATING LENGTH	CONTACT TYPE
G	[5.59]	SIGNAL
F	[5.59]	SIGNAL
E	[5.59]	SIGNAL
U	[6.86]	SIGNAL
H	[5.59]	SIGNAL
PA	[N/A]	POWER
HA	[N/A]	HOLD-DOWN

spec ref		*	dr		Ruan MT	2013/10/31	projection 	MM 	size	A4	scale	1:1	
tolerance std ASME Y14.5	TOLERANCES UNLESS OTHERWISE SPECIFIED		eng		Ruan MT	2013/11/08			ecn no				-
			chr		-	-							
			appr		Pei-Ming Zheng	2013/11/08			product family			PwrBlade	rel level
surface ✓ ASME Y14.5	linear	0.X	±0.5		title 2P + 8S + 2P RIGHT ANGLE SOLDER HEADER				dwg no	51730-213		rev A	
		0.XX	±0.25										
		0.XXX	±0.1										
angular		0°	±2°	www.fci.com	cat. no.		-	Product - Customer Drw			sheet 1 of 4		

PrintE File - REV C - 2009-06-09

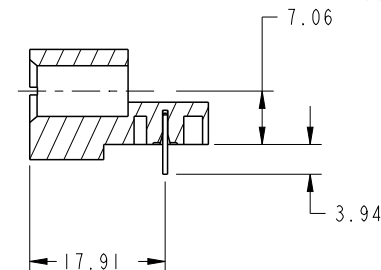
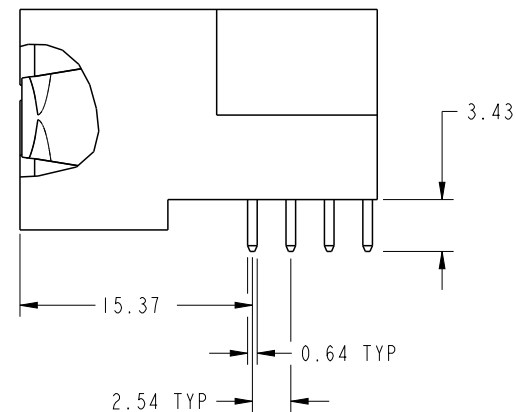
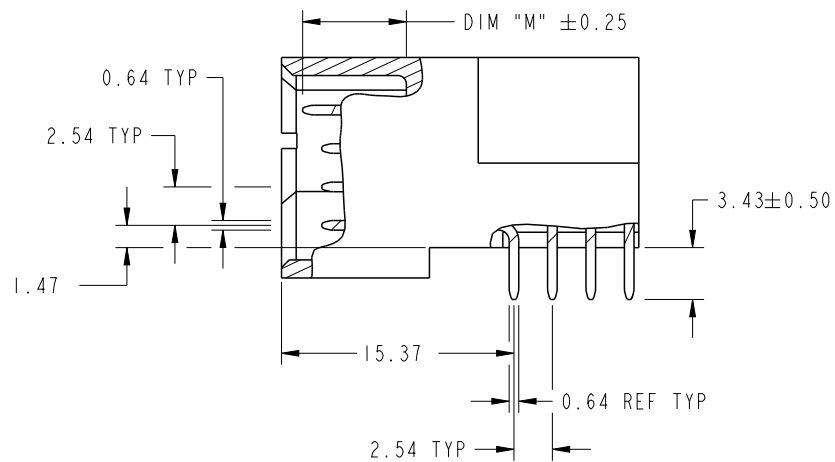
PDS: Rev :A

STATUS:Released

Printed: Nov 08, 2013

PRODUCT NUMBER

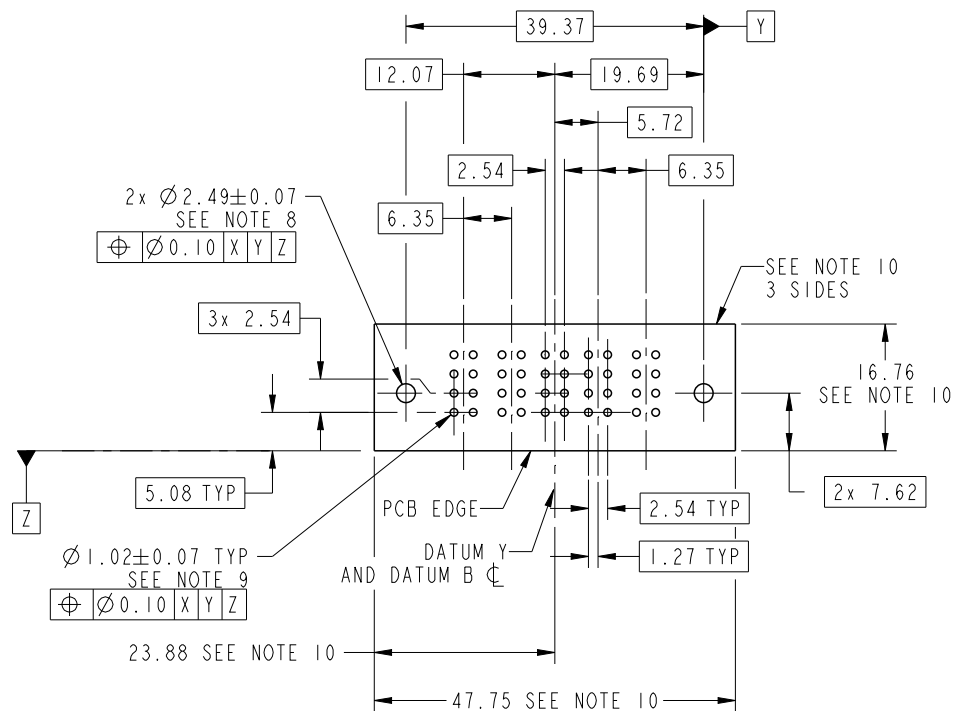
51730-213--  
NOTE: 3



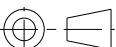


dr	Ruan MT	2013/10/31	<div>projection</div> <div></div>	<div>MM</div> <div></div>	size	A4	scale	1:1	
eng	Ruan MT	2013/11/08			ecn no	-			
chr	-	-			rel level	Released			
appr	Pei-Ming Zheng	2013/11/08	product family	PwrBlade					
<div></div>		title			2P + 8S + 2P		dwg no		rev
		RIGHT ANGLE SOLDER HEADER			51730-213		A		
www.fci.com		cat. no.		-	Product - Customer Drw			sheet 2 of 4	

PRODUCT NUMBER

51730-213--  
NOTE: 3



RECOMMENDED PCB LAYOUT

dr	Ruan MT	2013/10/31	<div>projection</div> <div></div>	<div>MM</div> <div></div>	size	A4	scale	1:1	
eng	Ruan MT	2013/11/08			ecn no				
chr	-	-							
appr	Pei-Ming Zheng	2013/11/08	product family		PwrBlade	rel level		Released	
		title			2P + 8S + 2P		dwg no		rev
					RIGHT ANGLE SOLDER HEADER		51730-213		A
www.fci.com		cat. no.		-	Product - Customer Drw			sheet 3 of 4	



Copyright FCI.

PRODUCT NUMBER  
51730-213--  
NOTE: 3

NOTES:

1. DIMENSIONS AND TOLERANCES ARE IN ACCORDANCE WITH  
ASME Y14.5M, 1994 UNLESS OTHERWISE SPECIFIED.

CONNECTOR NOTES:

- 2. HOUSING MATERIAL: UL 94 V-0 GLASS FILLED HIGH-TEMP THERMOPLASTIC  
POWER CONTACT MATERIAL: COPPER ALLOY  
SIGNAL PIN MATERIAL: COPPER ALLOY
- 3. SEE ITEM 1 & 2 IN PRINT 10064183 FOR PLATING SPEC OF 51730-213 AND 51730-213LF RESPECTIVELY.
- 4. MANUFACTURER'S NAME, DATE CODE AND OPTIONAL P/N TO APPEAR ON  
THIS SURFACE. THE MARK CAN BE OMITTED IF THERE IS NOT ENOUGH  
SPACE ON THIS SURFACE.
- 5. PRODUCT SPECIFICATION GS-12-149.  
APPLICATION SPECIFICATION BUS-20-067.
- 6. PACKAGED IN TRAYS.

PCB NOTES:

- 7. ALL HOLE DIAMETERS ARE FINISHED HOLE SIZE.
- 8. MOUNTING HOLES, WHERE APPLICABLE, ARE UNPLATED.
- 9.  $\varnothing 1.151 \pm 0.025$  DRILLED HOLES PLATED WITH  
0.008 MIN SnPb OR Sn OVER 0.03  
TO 0.08 Cu PLATING TO ACHIEVE  
 $\varnothing 1.02 \pm 0.07$  HOLE.
- 10. CONNECTOR KEEP-OUT ZONE.

dr	Ruan MT	2013/10/31	<div>projection</div>	<div>MM</div>	size	A4	scale	1:1		
eng	Ruan MT	2013/11/08			ecn no	-				
chr	-	-								
appr	Pei-Ming Zheng	2013/11/08	product family		PwrBlade	rel level		Released		
	title				2P + 8S + 2P			dwg no	51730-213	rev
www.fci.com		cat. no.		-		Product - Customer Drw		sheet 4 of 4		