



Chipsmall Limited consists of a professional team with an average of over 10 year of expertise in the distribution of electronic components. Based in Hongkong, we have already established firm and mutual-benefit business relationships with customers from,Europe,America and south Asia,supplying obsolete and hard-to-find components to meet their specific needs.

With the principle of “Quality Parts,Customers Priority,Honest Operation,and Considerate Service”,our business mainly focus on the distribution of electronic components. Line cards we deal with include Microchip,ALPS,ROHM,Xilinx,Pulse,ON,Everlight and Freescale. Main products comprise IC,Modules,Potentiometer,IC Socket,Relay,Connector.Our parts cover such applications as commercial,industrial, and automotives areas.

We are looking forward to setting up business relationship with you and hope to provide you with the best service and solution. Let us make a better world for our industry!



Contact us

Tel: +86-755-8981 8866 Fax: +86-755-8427 6832

Email & Skype: info@chipsmall.com Web: www.chipsmall.com

Address: A1208, Overseas Decoration Building, #122 Zhenhua RD., Futian, Shenzhen, China



1

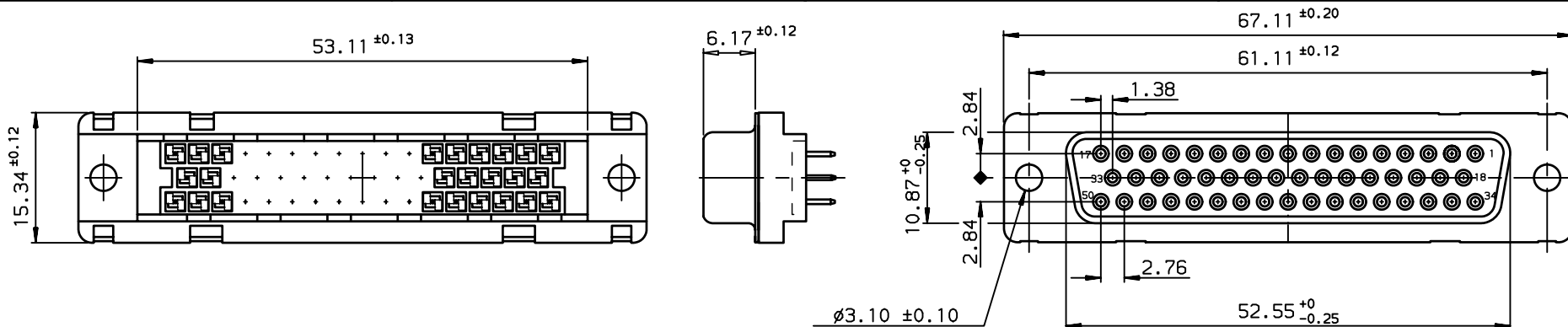
2

3

4

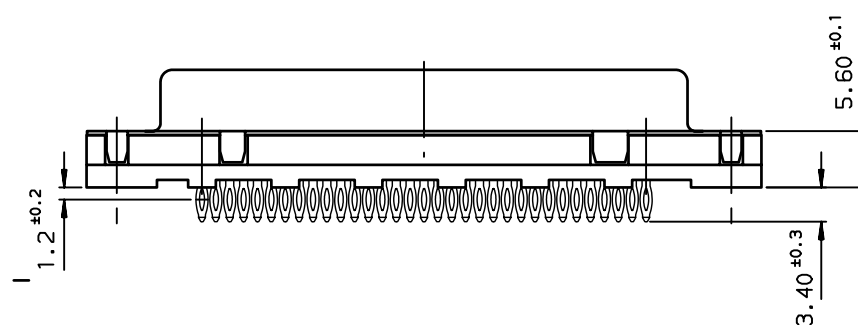
A

A



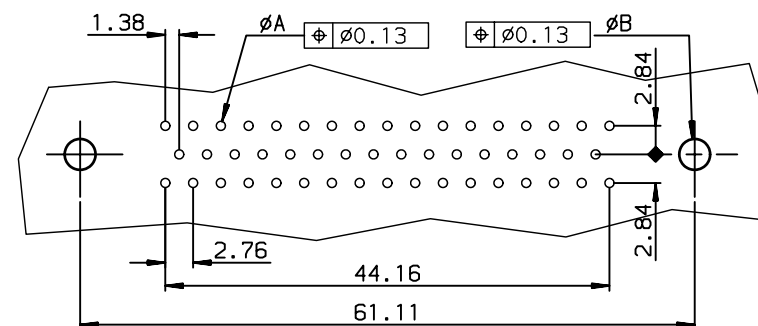
B

B



PC board drilling dimensions

(after plating - thickness: 1.60 to 3.20 mm)



C

C

TIN LEAD PART NUMBER

D50S90C4PA00	D50S90C6PA00
Gold flash	0,76 µ gold

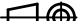


LEAD FREE PART NUMBER

D50S90C4PA00LF	D50S90C6PA00LF
Gold flash	0,76 µ gold

GENERAL CHARACTERISTICS AND ROHS INFORMATIONS:

SEE DRAWING C01-8646-0001

European Views

www.fciconnect.com			surface ISO 1302		tolerance std ISO 406 ISO 1101		projection 		mm 	
			TOLERANCES UNLESS OTHERWISE SPECIFIED							
Dr	M PESSON	2006/01/11	ANGULAR	LINEAR	0.X	±0.1	size A3	Scale 2		
Eng	P LEGARE	2006/01/11			0.XX	±0.1		ECN	LS06-0140	
Chr	-	-			0.XXX	±0.1				
Appr	-	-	Product family				D-SUB	Spec ref -		
			FEMALE CONNECTOR DELTA D with straight press fit contact				dwg no C01-8646-0431		Rev. E	
catalog no			-				CUSTOMER		sheet 1 of 1	

rev	ecn no	dr	date
C	LS06-0011	MPE	2006/01/11
D	LS06-0097	LGO	2006/07/29
E	LS06-0140	LGO	2006/11/21
-	-	-	-
-	-	-	-
-	-	-	-
-	-	-	-



title
FEMALE CONNECTOR DELTA D
with straight press fit contact
catalog no

Rev.
E
sheet 1 of 1

REV F - 2006-04-17

1

2

3

4

D