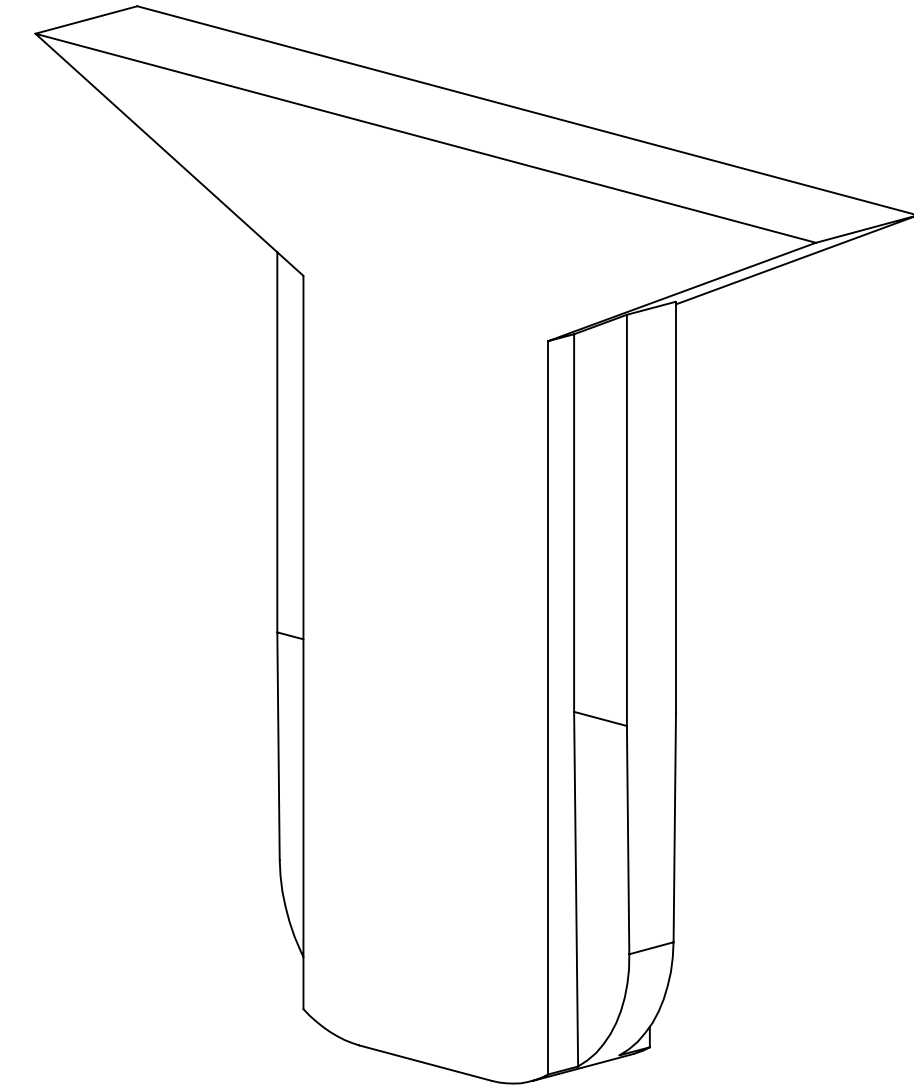
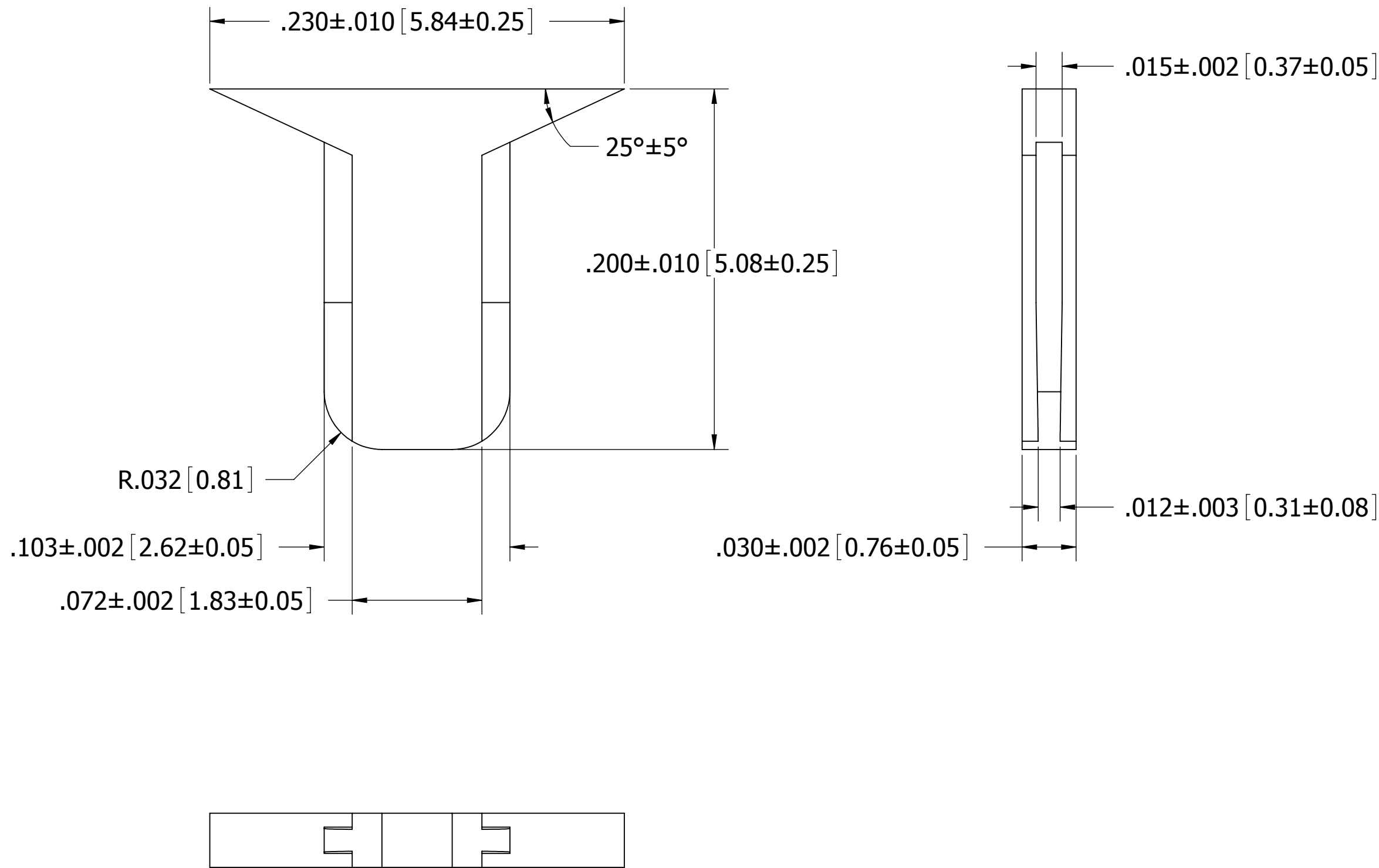


PART NUMBER CODING				
SULLINS	MICRO PLASTICS	MATERIAL	CONNECTOR OPERATING TEMP	CONNECTOR PROCESSING TEMP
PLA-K1	04-0003-000	WHITE PBT	-65°C TO +125°C	WAVE/MANUAL SOLDERING
GLA-K1	44-0003-000	BLACK PA9T	-65°C TO +150°C	260°C MAX FOR 20 SECONDS

REVISIONS				
REV.	ECO NO.	DESCRIPTION	DATE	BY
A	3524	INITIAL RELEASE (RE-DRAW TO REPLACE DWG 102)	2/17/2017	MG



CUSTOMER COPY

NOTES:
1. MATERIAL: SEE PART NUMBER CODING



UNLESS OTHERWISE SPECIFIED: DIMENSIONS ARE IN INCHES [MM]		DRAWN	DATE	NAME	
			10/04/16	MG	
TOLERANCES: ANGULAR: $\pm 1^\circ$ DECIMALS .XX = $\pm .02$ [.5] .XXX = $\pm .005$ [.13] .XXXX = $\pm .0005$ [.013]					THE INFORMATION HEREIN CONTAINS PROPRIETARY INFORMATION OF SULLINS ELECTRONICS AND IS NOT TO BE REPRODUCED, USED OR DISCLOSED TO OTHERS FOR ANY PURPOSE EXCEPT AS SPECIFICALLY AUTHORIZED IN WRITING BY AN OFFICER OF SULLINS ELECTRONICS.
					TITLE
					PART NUMBER
					POLARIZING KEY _LA-K1
SIZE	CAGE CODE	DWG. NO.	REV		
C	54453	C13097	A		
SCALE: 32:1			SHEET 1 OF 1		