



Chipsmall Limited consists of a professional team with an average of over 10 year of expertise in the distribution of electronic components. Based in Hongkong, we have already established firm and mutual-benefit business relationships with customers from,Europe,America and south Asia,supplying obsolete and hard-to-find components to meet their specific needs.

With the principle of “Quality Parts,Customers Priority,Honest Operation,and Considerate Service”,our business mainly focus on the distribution of electronic components. Line cards we deal with include Microchip,ALPS,ROHM,Xilinx,Pulse,ON,Everlight and Freescale. Main products comprise IC,Modules,Potentiometer,IC Socket,Relay,Connector.Our parts cover such applications as commercial,industrial, and automotives areas.

We are looking forward to setting up business relationship with you and hope to provide you with the best service and solution. Let us make a better world for our industry!



## Contact us

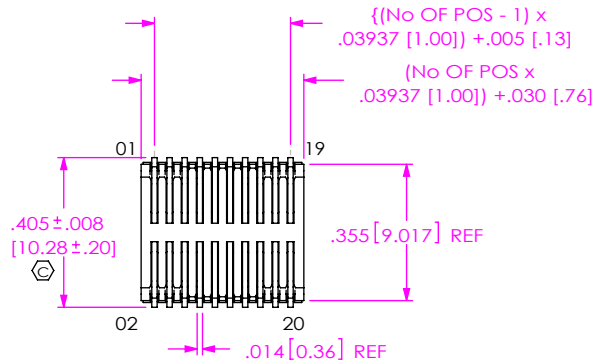
Tel: +86-755-8981 8866 Fax: +86-755-8427 6832

Email & Skype: [info@chipsmall.com](mailto:info@chipsmall.com) Web: [www.chipsmall.com](http://www.chipsmall.com)

Address: A1208, Overseas Decoration Building, #122 Zhenhua RD., Futian, Shenzhen, China



DO NOT  
SCALE FROM  
THIS PRINT



FSI-1XX-XX-XXX-D-X-XX-XX

NO OF POSITIONS  
THREADED: -10, -20, -25, -30, -40, -50  
NON-THREADED: -05 THRU -50  
[IN MULTIPLES OF 5]

BODY HEIGHT  
-06: 6mm (USE C-133-02-XXX)  
-10: 10mm (USE C-133-03-XXX)

PLATING  
-L: .000010 GOLD ON CONTACT AREA,  
.000100-.000250 TIN ON TAIL (USE C-133-XX-L)  
-S: .000030 GOLD ON CONTACT AREA,  
.000100-.000250 TIN ON TAIL (USE C-133-XX-S)  
-STL: .000030 GOLD ON CONTACT AREA,  
.000200 TIN LEAD ON TAIL (USE C-133-XX-STL)  
-LTL: .000010 GOLD ON CONTACT AREA,  
.000200 TIN LEAD ON TAIL (USE C-133-XX-LTL)  
-LM: .000010 GOLD ON CONTACT AREA,  
.000100-.000250 MATTE TIN ON TAIL (USE C-133-XX-L)  
-SM: .000030 GOLD ON CONTACT AREA,  
.000100-.000250 MATTE TIN ON TAIL (USE C-133-XX-S)

ROW SPECIFICATION  
-D: DOUBLE ROW  
(FOR -06 BODY: USE FSI-XX-06-D-XX-X)  
(FOR -10 BODY: USE FSI-XX-10-D-XX-X)

OPTION  
-TR: TAPE & REEL PACKAGING  
BLANK FOR TUBED PARTS.  
-P: (FOR AVAILABILITY, SEE FIG 4, SHEET 3)  
-K: POLYAMIDE FILM PAD  
(USE K-500-300)(SEE FIG 5, SHEET 3)  
[AVAILABLE ONLY ON POSITIONS  
40 & 50 WITH ANY THREADED  
INSERT OPTIONS]

ALIGNMENT PIN LOCATION  
-AT: TOP SIDE (USE FSI-XX-XX-D-AT-X)  
-AB: BOTTOM SIDE (USE FSI-XX-XX-D-AB-X)  
-AD: DUAL (TOP & BOTTOM)  
(USE FSI-XX-XX-D-AD-X, SEE FIG 2)  
\*LC: LOCKING CLIP  
BLANK FOR NO ALIGNMENT PIN.

THREADED INSERT OPTION  
-E: THREADED INSERT (ENGLISH)  
(USE INS-19-2-56-157, SEE FIG 3, SHT 2)  
-M: THREADED INSERT (METRIC)  
(USE INS-19-M2-157-N, SEE FIG 3, SHT 2)  
BLANK FOR NON-THREADED INSERT.

\* = NOT TOOLED

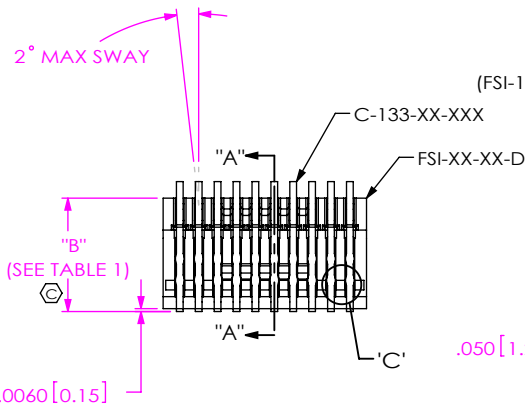


FIG 1  
(FSI-110-06-XXX-D SHOWN)

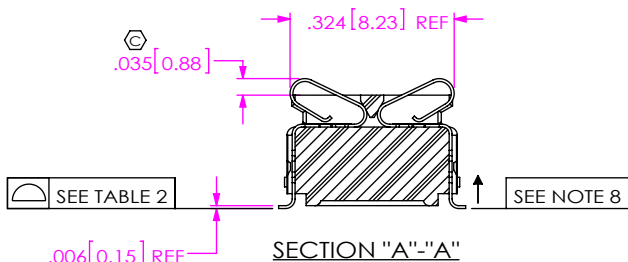
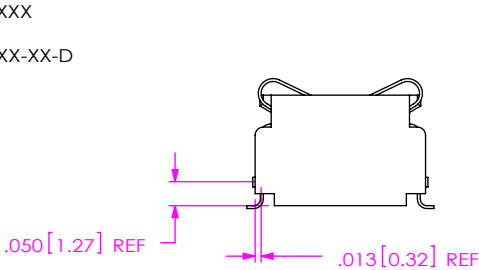
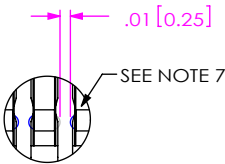


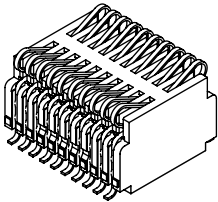
TABLE 1			
BODY HEIGHT	"B"	"C"	"D"
-06	.236 [6.00]	.450 [11.43]	.158 [4.01]
-10	.394 [10.00]	.450 [11.43]	.307 [7.80]

TABLE 2	
No. OF POS.	COPLANARITY
0-35	.004 [.10]
40-50	.006 [.15]

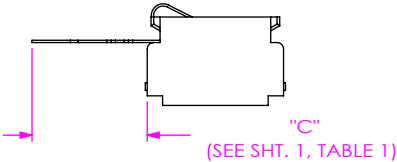


DETAIL 'C'  
SCALE 5.5 : 1

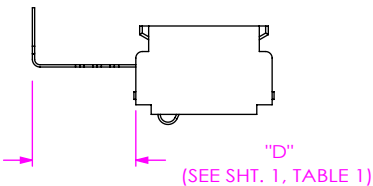
- NOTES:
- REPRESENTS A CRITICAL DIMENSION.
  - MINIMUM PUSHOUT FORCE: 12 oz.
  - LOAD INSERTS IN THE DIRECTION OF THE ARROW USING THERMAL INSERTION MACHINE.
  - THREADED INSERT MUST BE ABLE TO HANDLE 35 in.-oz's OF TORQUE MIN WITHOUT ROTATING OR "LOOSENING".
  - THREADED INSERT RETENTION TO BE 20 lb MIN.
  - FOR -05 POS WITH -PPP OPTION, LEADS MAY NOT BE VISIBLE BY SOME OPTICAL MACHINES.
  - HOT BAR FORM AFTER ASSEMBLY (WILL PRODUCE RETENTION FLANGE AS SHOWN).
  - MAXIMUM ALLOWABLE SHEAR BURR: .003[.08], IN DIRECTION SHOWN.



IN-PROCESS 1  
[SHOWN WITH CARRIER]



IN-PROCESS 2  
[SHOWN WITH CARRIER]



UNLESS OTHERWISE SPECIFIED,  
DIMENSIONS ARE IN INCHES.  
TOLERANCES ARE:  
DECIMALS ANGLES  
.XX:  $\pm .01$  [.25]  
.XXX:  $\pm .005$  [.13]  
.XXXX:  $\pm .0020$  [.05]

MATERIAL: DO NOT SCALE DRAWING SHEET SCALE: 2:1  
INSULATOR: LCP, COLOR: BLACK  
CONTACTS: C-133-02-X: BeCu  
C-133-03-X: BeCu  
INSERT: BRASS

PROPRIETARY NOTE  
THIS DOCUMENT CONTAINS CONFIDENTIAL AND  
PROPRIETARY INFORMATION AND ALL DESIGN,  
MANUFACTURING, REPRODUCTION, USE, PATENT RIGHTS  
AND SALES RIGHTS ARE EXPRESSLY RESERVED BY SAMTEC,  
INC. THIS DOCUMENT SHALL NOT BE DISCLOSED, IN WHOLE  
OR PART, TO ANY UNAUTHORIZED PERSON OR ENTITY NOR  
REPRODUCED, TRANSFERRED OR INCORPORATED IN ANY  
OTHER PROJECT IN ANY MANNER WITHOUT THE EXPRESS  
WRITTEN CONSENT OF SAMTEC, INC.

**samtec**

520 PARK EAST BLVD, NEW ALBANY, IN 47150  
PHONE: 812-944-6733 FAX: 812-948-5047  
e-Mail: info@SAMTEC.com code: 55322

DESCRIPTION:  
1mm SINGLE ELEMENT INTERFACE  
DWG. NO.  
FSI-1XX-XX-XXX-D-X-XX-XX  
BY: BRATCHER 1/29/99 SHEET 1 OF 3

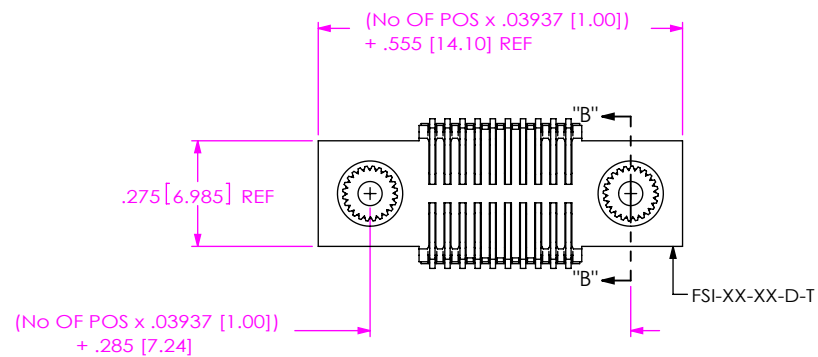


FIG 3  
-M & -E: THREADED OPTIONS  
(FSI-110-06-L-D-M SHOWN)  
(EQUATIONS APPLY TO -10, -20, -25 & -30 ONLY)

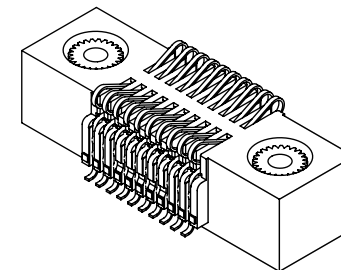
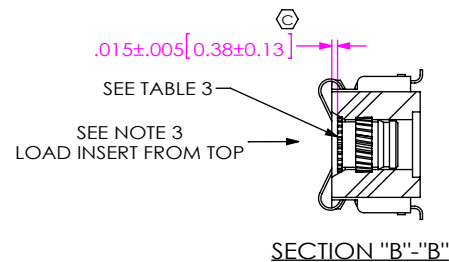
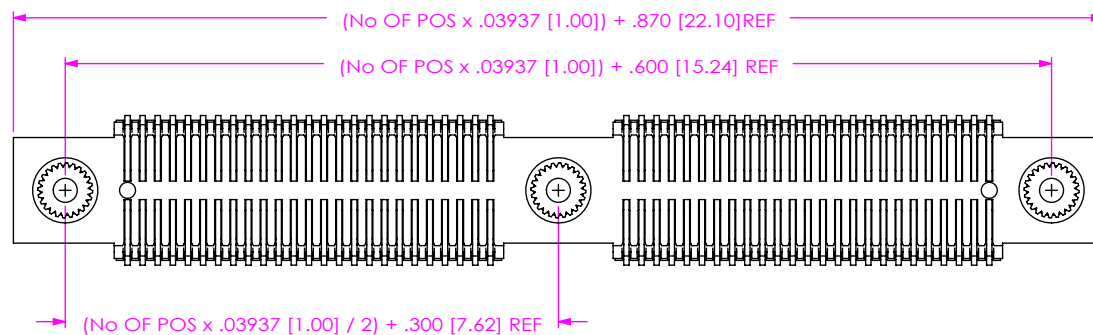
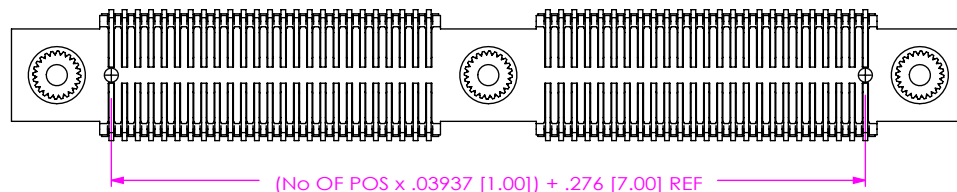


TABLE 3: THREADED INSERT		
OPTION	INSERT	THREAD
-E	INS-19-2-56-157	2 X 56
-M	INS-19-M2-157-N	M2.0 x 4

**\*\* METRIC THREADED INSERTS TO BE FLASH NICKEL PLATED**

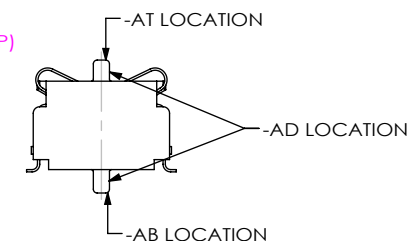
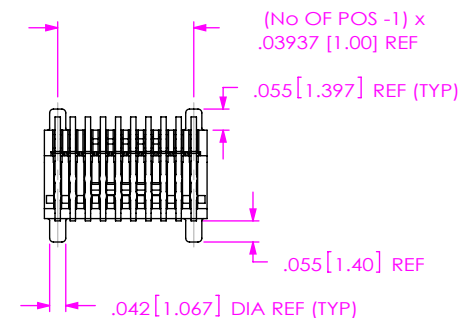


FOR -40- & -50 WITH -M OR -E OPTION  
(FSI-150-06-L-D-M-AD SHOWN)



ALIGNMENT PIN OPTION  
FOR -40- & -50 WITH -M OR -E OPTION  
(FSI-150-XX-L-D-M-AD SHOWN)

FIG 2  
ALIGNMENT PIN OPTIONS  
(FSI-110-06-L-D-AD SHOWN)



**PROPRIETARY NOTE**  
THIS DOCUMENT CONTAINS CONFIDENTIAL AND PROPRIETARY INFORMATION AND ALL DESIGN, MANUFACTURING, REPRODUCTION, USE, PATENT RIGHTS AND SALES RIGHTS ARE EXPRESSLY RESERVED BY SAMTEC, INC. THIS DOCUMENT SHALL NOT BE DISCLOSED, IN WHOLE OR PART, TO ANY UNAUTHORIZED PERSON OR ENTITY NOR REPRODUCED, TRANSFERRED OR INCORPORATED IN ANY OTHER PROJECT IN ANY MANNER WITHOUT THE EXPRESS WRITTEN CONSENT OF SAMTEC, INC.

DO NOT SCALE DRAWING

SHEET SCALE: 2:1

**samtec**

520 PARK EAST BLVD, NEW ALBANY, IN 47150  
PHONE: 812-944-6733 FAX: 812-948-5047  
e-Mail: info@SAMTEC.com code: 55322

DESCRIPTION:  
1mm SINGLE ELEMENT INTERFACE

DWG. NO.

FSI-1XX-XX-XXX-D-X-XX-XX

BY: BRATCHER 1/29/99

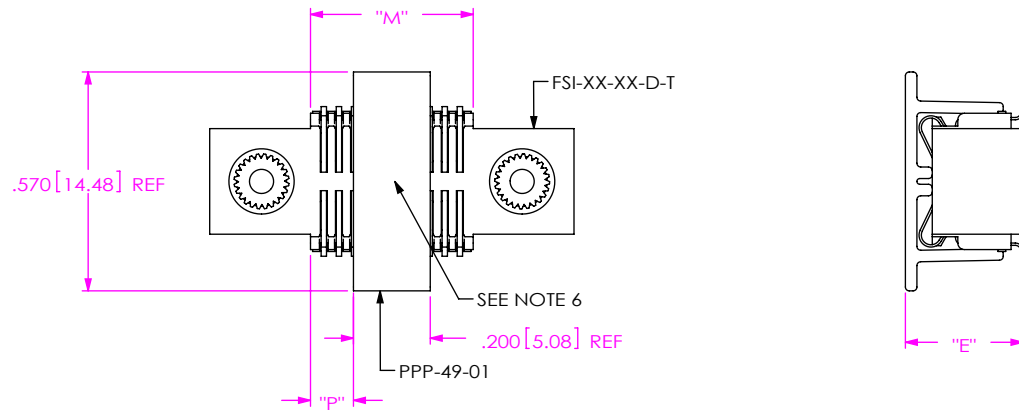
SHEET 2 OF 3



FIG 4

**-P: PICK & PLACE PAD OPTION  
(FSI-110-06-L-D-M SHOWN)  
NOT AVAILABLE ON 5 POSITION**

NOT AVAILABLE IF POSITION IS 05 AND LEAD STYLE IS 06



FOR 10 THRU 50 POSITIONS WITH -M OR -E OPTION,  
-10 THRU -50 WITHOUT -M OR -E OPTION

$$\begin{aligned} \text{"M"} &= (\text{No OF POS} \times .03937[1.000]) + .030[.76] \text{ REF} \\ \text{"P"} &= \{(\text{"M"} - .200[5.08]) / 2\} \pm .020[.51] \end{aligned}$$

TABLE 4

BODY HEIGHT	"E"	"F"
-06	.306 [7.77]	.241 [6.12]
-10	.464 [11.79]	.399 [10.13]

## PACKAGING TABLE

PACKAGING TABLE		
BODY HEIGHT	TUBE	PLUG
-06	PT-1-24-02-70	TP-29
-10	PT-1-24-02-106	TP-13
-06-P	PT-1-24-03-101	TP-03
-10-P	PT-1-24-04-101	TP-13

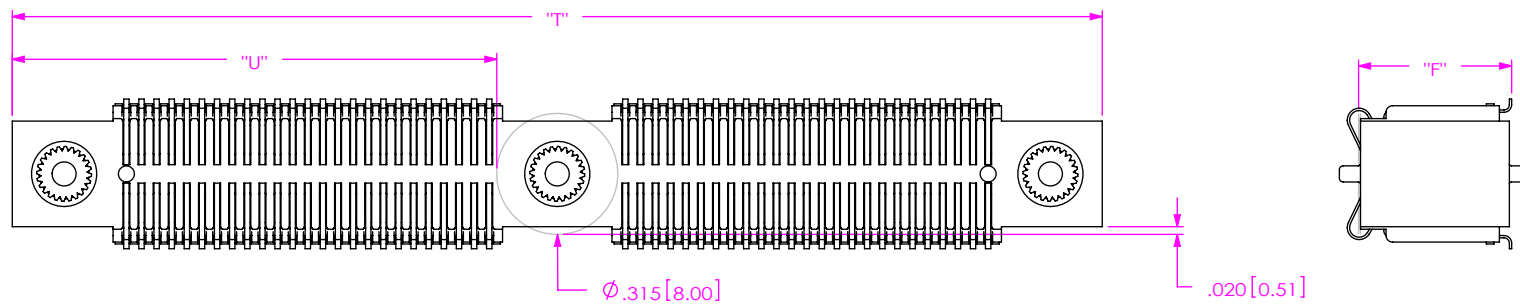


FIG 5

-K: POLYAMIDE FILM PAD  
(USE K-500-300)  
(AVAILABLE ONLY ON POSITIONS  
40 & 50 WITH -M OR -E OPTION)

$$\begin{aligned} \text{"T"} &= (\text{No OF POS} \times .03937[1.000]) + .870[22.10] \text{ REF} \\ \text{"U"} &= \{(\text{"T"} - .315[8.00]) / 2\} \pm .020[.51] \end{aligned}$$

PROPRIETARY NOTE

THIS DOCUMENT CONTAINS CONFIDENTIAL AND PROPRIETARY INFORMATION AND ALL DESIGN, MANUFACTURING, REPRODUCTION, USE, PATENT RIGHTS AND SALES RIGHTS ARE EXPRESSLY RESERVED BY SAMTEC, INC. THIS DOCUMENT SHALL NOT BE DISCLOSED, IN WHOLE OR PART, TO ANY UNAUTHORIZED PERSON OR ENTITY NOR REPRODUCED, TRANSFERRED OR INCORPORATED IN ANY OTHER PROJECT IN ANY MANNER WITHOUT THE EXPRESS WRITTEN CONSENT OF SAMTEC, INC.

DO NOT SCALE DRAWING

SHEET SCALE: 2:1

**santec**

520 PARK EAST BLVD, NEW ALBANY, IN 47150  
PHONE: 812-944-6733 FAX: 812-948-5047  
e-Mail: [info@SAMTEC.com](mailto:info@SAMTEC.com) code: 55322

DESCRIPTION: 1mm SINGLE ELEMENT INTERFACE

DWG. NO.  
FSI-1XX-XX-XXX-D-X-XX-XX

BY: BRATCHER 1/29/99

SHEET 3 OF 3