



Chipsmall Limited consists of a professional team with an average of over 10 year of expertise in the distribution of electronic components. Based in Hongkong, we have already established firm and mutual-benefit business relationships with customers from,Europe,America and south Asia,supplying obsolete and hard-to-find components to meet their specific needs.

With the principle of “Quality Parts,Customers Priority,Honest Operation,and Considerate Service”,our business mainly focus on the distribution of electronic components. Line cards we deal with include Microchip,ALPS,ROHM,Xilinx,Pulse,ON,Everlight and Freescale. Main products comprise IC,Modules,Potentiometer,IC Socket,Relay,Connector.Our parts cover such applications as commercial,industrial, and automotives areas.

We are looking forward to setting up business relationship with you and hope to provide you with the best service and solution. Let us make a better world for our industry!



Contact us

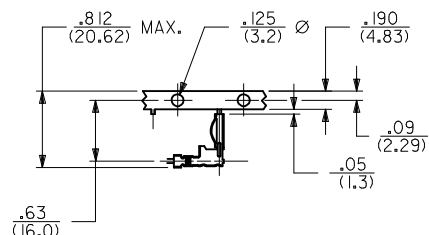
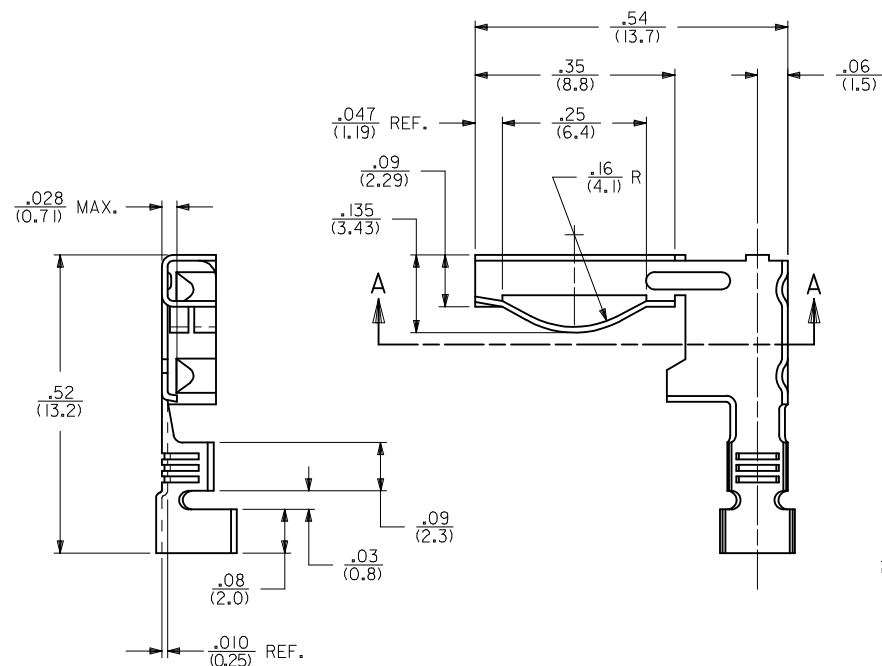
Tel: +86-755-8981 8866 Fax: +86-755-8427 6832

Email & Skype: info@chipsmall.com Web: www.chipsmall.com

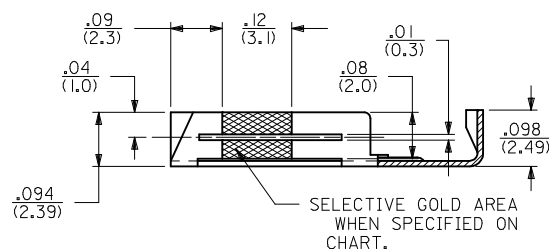
Address: A1208, Overseas Decoration Building, #122 Zhenhua RD., Futian, Shenzhen, China



13	12	11	10	9	8	7	6	5	4	3	2	1
PART NO.	PACKED	MATERIAL	FINISH	WIRE RANGE AWG.	INS. DIA. RANGE	C	D	E	F	ENG. NO.	REMARKS	
08-35-0105	CHAIN	70/30 BRASS .010/(0.25) THICK	.00002/(0.0005) MIN. GOLD PLATE OVER .00003/(0.0008) MIN. NICKEL PLATE	#18-#24 CU. STR.	0.060/0.120 (1.52/3.05)	0.130±.030 (3.30±0.76)	0.140±.015 (3.56±0.38)	0.105±.020 (2.67±0.51)	0.088±.015 (2.24±0.38)	1799-MAG	GOLD OVERALL	OBSOLETE
08-34-0105	CHAIN	70/30 BRASS .010/(0.25) THICK	.00002/(0.0005) MIN. GOLD PLATE OVER .00003/(0.0008) MIN. NICKEL PLATE PER ENG. STD. NO. 41.							1799-MAG I	SELECTIVE GOLD	
08-30-0109	CHAIN	70/30 BRASS .010/(0.25) THICK	TIN PLATED							1799-MAT		



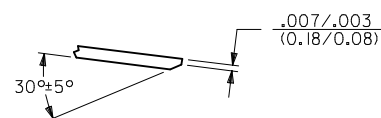
CARRIER STRIP DETAIL
ACTUAL SIZE



SECTION A-A

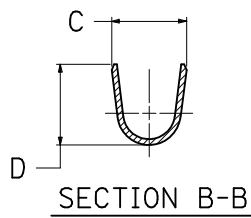
NOTES:

1. MATERIAL: SEE CHART
2. FINISH: SEE CHART
3. PRODUCT SPECIFICATION: NONE
4. REEL WINDING PER ES-339 "A" WINDING.
5. WIRE STRIP LENGTH TO BE .140/(3.56)
6. MAXIMUM VOLTAGE: 250 VAC (NOT CONSIDERING PCB) CURRENT RATING DEPENDS ON MATING PCB. UP TO 7.0 AMPS MAXIMUM PER CIRCUIT IS POSSIBLE UNDER IDEAL CONDITIONS.
7. PARTS CONFORM TO CLASS B REQUIREMENTS OF COSMETIC SPECIFICATION PS-45499-002.

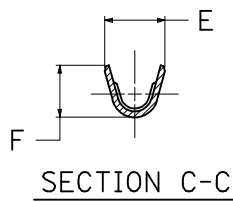


COIN DETAIL

SCALE 12:1
TYP. FOR BOTH CONDUCTOR
AND INSULATOR CRIMPS
1799-M SERIES ONLY



SECTION B-B



SECTION C-C

OBSOLETE #08-35-0105 EC NO: UCP2013-0293 DRWN:ELHAG 2012/07/23 CHKD: APPR:FSMITH 2012/09/11	DESCRIPTION	QUALITY SYMBOLS ▽=0 ▽=0	GENERAL TOLERANCES (UNLESS SPECIFIED)		DIMENSION STYLE IN/MM		SCALE 6:1	DESIGN UNITS INCH	THIRD ANGLE PROJECTION			
				mm	INCH	DRAWN BY MAB	DATE 1992/06/05	TITLE TERMINAL - RIGHT ANGLE MODIFIED FOR EDGE CONNECTORS				
			4 PLACES	± ---	± ---	CHECKED BY ESS	DATE 1992/06/05					
			3 PLACES	± ---	± .010	APPROVED BY RAS	DATE 1992/06/05					
			2 PLACES	± 0.25	± .015	MATERIAL NO. SEE CHART		DOCUMENT NO. SD-1799-MA		SHEET NO. 1 OF 1		
			1 PLACE	± 0.38	± ---	THIS DRAWING CONTAINS INFORMATION THAT IS PROPRIETARY TO MOLEX INCORPORATED AND SHOULD NOT BE USED WITHOUT WRITTEN PERMISSION						
			ANGULAR ±1/2°				MOLEX MOLEX INCORPORATED					
			DRAFT WHERE APPLICABLE MUST REMAIN WITHIN DIMENSIONS									