



Chipsmall Limited consists of a professional team with an average of over 10 year of expertise in the distribution of electronic components. Based in Hongkong, we have already established firm and mutual-benefit business relationships with customers from,Europe,America and south Asia,supplying obsolete and hard-to-find components to meet their specific needs.

With the principle of “Quality Parts,Customers Priority,Honest Operation,and Considerate Service”,our business mainly focus on the distribution of electronic components. Line cards we deal with include Microchip,ALPS,ROHM,Xilinx,Pulse,ON,Everlight and Freescale. Main products comprise IC,Modules,Potentiometer,IC Socket,Relay,Connector.Our parts cover such applications as commercial,industrial, and automotives areas.

We are looking forward to setting up business relationship with you and hope to provide you with the best service and solution. Let us make a better world for our industry!



Contact us

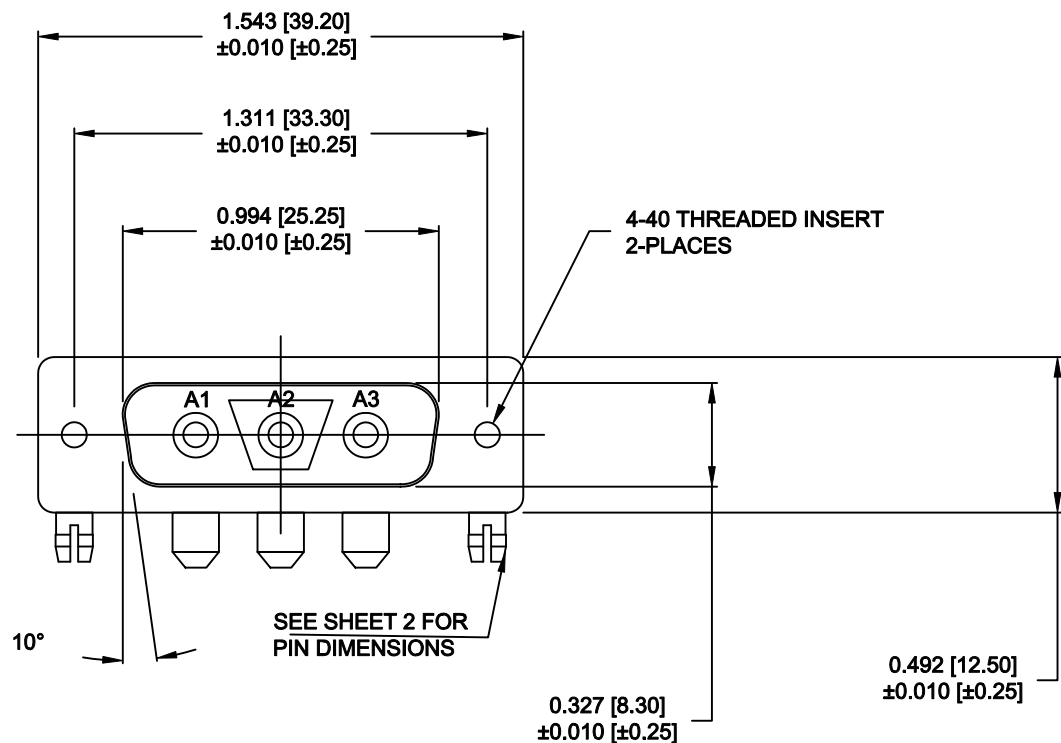
Tel: +86-755-8981 8866 Fax: +86-755-8427 6832

Email & Skype: info@chipsmall.com Web: www.chipsmall.com

Address: A1208, Overseas Decoration Building, #122 Zhenhua RD., Futian, Shenzhen, China

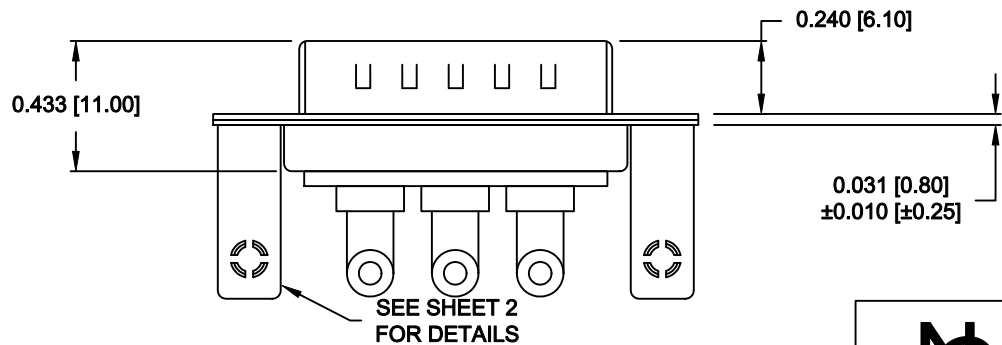


DESCRIPTION: POWER - RIGHT ANGLE - MALE - MACHINED



SPECIFICATIONS:


ELECTRICAL:	
INSULATOR RESISTANCE:	5G OHMS Min.
DIELECTRIC WITHSTANDING:	1,000VAC r.m.s.
OPERATING TEMPERATURE:	-55° C ~ +125° C
POWER CONTACT RESISTANCE:	1.0 Milliohms Max.
POWER PINS:	40 AMPS
MECHANICAL:	
CONTACT INSERTION FORCE:	4.5 Kg Max.
CONTACT SEPARATOR FORCE:	0.3Kg Min.
MATERIALS:	
CONTACTS:	COPPER ALLOY
INSULATOR:	PBT UL94V-0 RATED, 230°C PROCESS TEMP.
SHELL:	STEEL
BOARD LOCK:	BRASS, NICKEL PLATED
CINCHNUT:	BRASS, NICKEL PLATED
BRACKET:	STEEL, NICKEL PLATED
FINISH:	
SHELL:	NICKEL
CONTACTS:	FULL GOLD FLASH



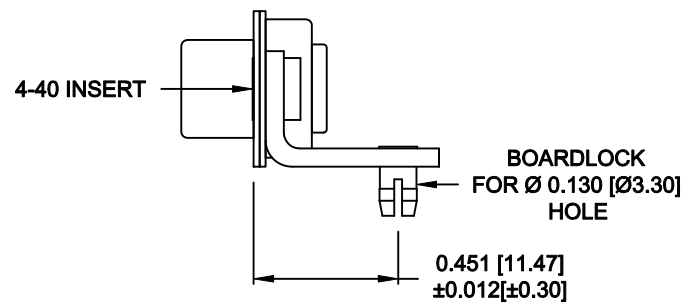
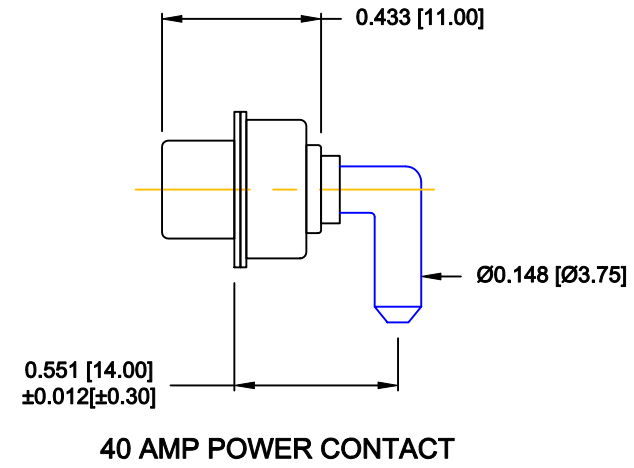
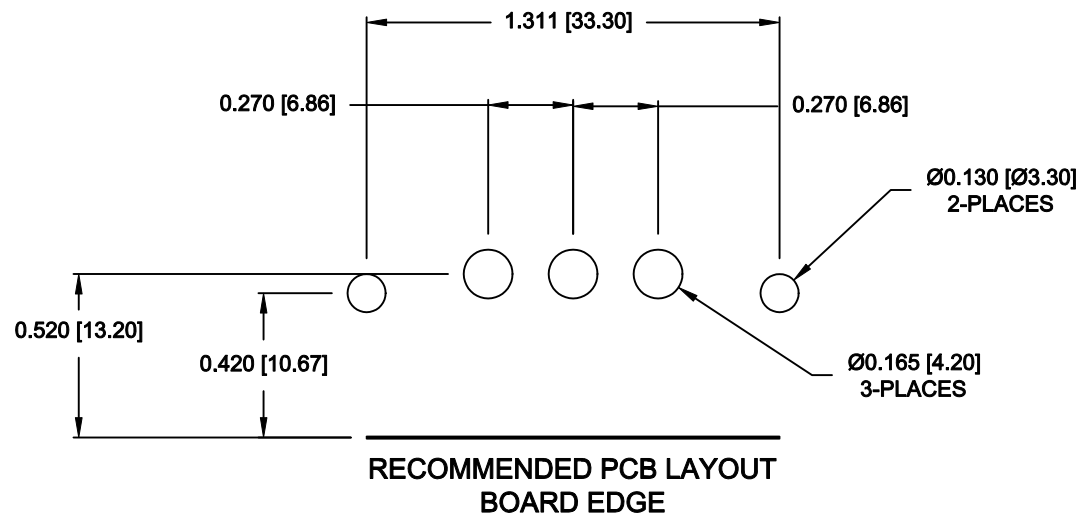
684M3W3K103L461

46 = 4-40 INSERTS /
BOARD LOCKS


RoHS COMPLIANT

	THESE DRAWINGS AND SPECIFICATIONS ARE THE PROPERTY OF NorComp AND SHALL NOT BE REPRODUCED, COPIED OR USED AS THE BASIS FOR THE MANUFACTURE OR SALE OF APPARATUS WITHOUT WRITTEN PERMISSION.	DRAWN: M. SIGMON		DATE: 07-22-13	
		CHECKED:		DATE:	
		SCALE: 1.5 = 1	SHEET 1 OF 2		REV 1
NorComp		DWG NO. 684M3W3K103L461			

NOTE:
POWER CONTACTS COME
PRE-LOADED INTO INSULATORS



RoHS COMPLIANT

	THESE DRAWINGS AND SPECIFICATIONS ARE THE PROPERTY OF NorComp AND SHALL NOT BE REPRODUCED, COPIED OR USED AS THE BASIS FOR THE MANUFACTURE OR SALE OF APPARATUS WITHOUT WRITTEN PERMISSION.	DRAWN: M. SIGMON		DATE: 07-22-13	
		CHECKED:		DATE:	
NorComp		SCALE: 1.5 = 1	SHEET 2		OF 2
		REV 1			
		DWG NO. 684M3W3K103L461			