



Chipsmall Limited consists of a professional team with an average of over 10 year of expertise in the distribution of electronic components. Based in Hongkong, we have already established firm and mutual-benefit business relationships with customers from,Europe,America and south Asia,supplying obsolete and hard-to-find components to meet their specific needs.

With the principle of “Quality Parts,Customers Priority,Honest Operation,and Considerate Service”,our business mainly focus on the distribution of electronic components. Line cards we deal with include Microchip,ALPS,ROHM,Xilinx,Pulse,ON,Everlight and Freescale. Main products comprise IC,Modules,Potentiometer,IC Socket,Relay,Connector.Our parts cover such applications as commercial,industrial, and automotives areas.

We are looking forward to setting up business relationship with you and hope to provide you with the best service and solution. Let us make a better world for our industry!



Contact us

Tel: +86-755-8981 8866 Fax: +86-755-8427 6832

Email & Skype: info@chipsmall.com Web: www.chipsmall.com

Address: A1208, Overseas Decoration Building, #122 Zhenhua RD., Futian, Shenzhen, China



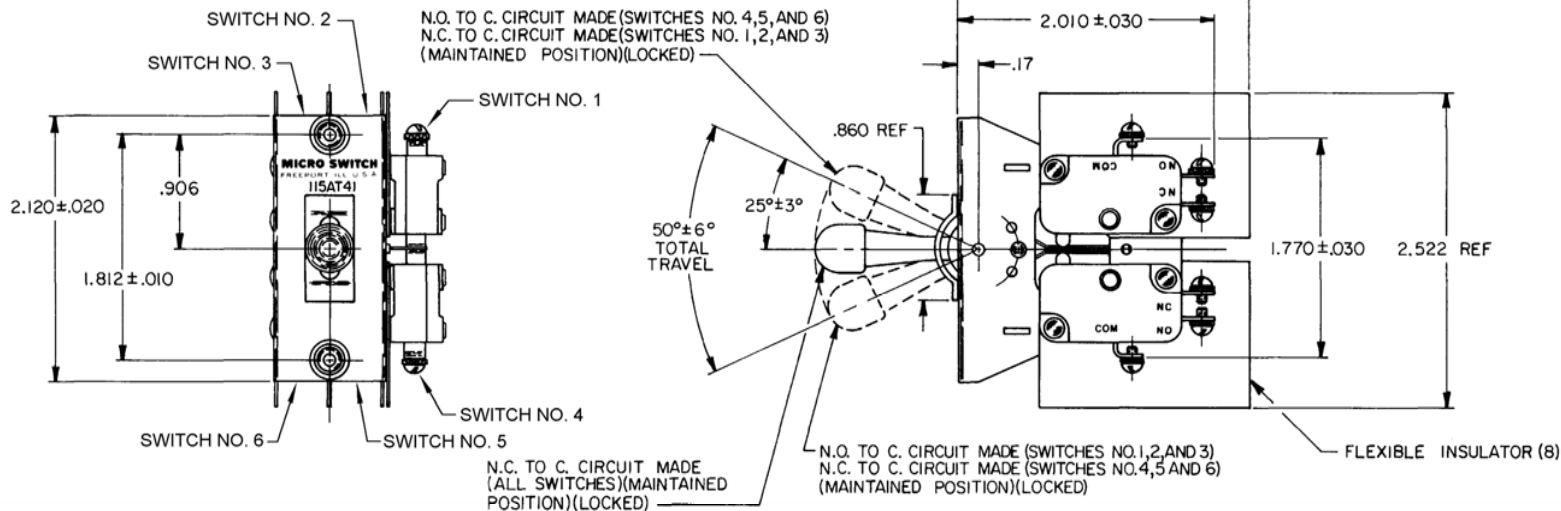
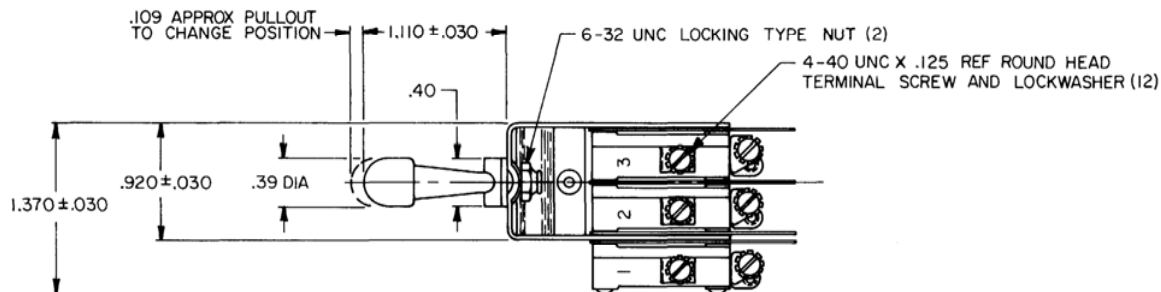
MICRO SWITCH

FREEPORT ILLINOIS U.S.A.
A DIVISION OF HONEYWELL

FED. MFG. CODE 91929

ASSEMBLY - TOGGLE SWITCH

CATALOG LISTING
115AT41



NOTES

- 1 - UNIT INCLUDES CAT. LIST. V3-1 TYPE BASIC SWITCH (6)
- 2 - SWITCHES DO NOT NECESSARILY OPERATE SIMULTANEOUSLY
- 3 - BASIC SWITCH NUMBER MARKED ON EACH BASIC SWITCH

THIS DRAWING COVERS A PROPRIETARY ITEM AND IS THE PROPERTY OF MICRO SWITCH, A DIVISION OF HONEYWELL. THIS DRAWING IS NOT TO BE COPIED OR USED WITHOUT THE APPROVAL OF MICRO SWITCH.

CHARACTERISTICS	ELECTRICAL DATA
	CONTACT ARRANGEMENT S P D T (6)
	15A-1/3 HP-125 OR 250 VAC 1/2A-125 VDC; 1/4A-250 VDC

STYLE	FULL
DO NOT SCALE PRINT	
TOLERANCES	
APPLICABLE DIMENSIONS	CONVERSION
INCHES	MILLIMETERS
1/16	1.5875
1/8	3.175
3/16	4.7625
1/4	6.35
5/16	7.9375
3/8	9.525
7/16	11.1125
1/2	12.7
5/8	15.875
3/4	19.05
7/8	22.225
1	25.4
DESIGN UNITS	SWITCHING
THIRD ANGLE PROJECTION	
WEIGHT	