



Chipsmall Limited consists of a professional team with an average of over 10 year of expertise in the distribution of electronic components. Based in Hongkong, we have already established firm and mutual-benefit business relationships with customers from,Europe,America and south Asia,supplying obsolete and hard-to-find components to meet their specific needs.

With the principle of “Quality Parts,Customers Priority,Honest Operation,and Considerate Service”,our business mainly focus on the distribution of electronic components. Line cards we deal with include Microchip,ALPS,ROHM,Xilinx,Pulse,ON,Everlight and Freescale. Main products comprise IC,Modules,Potentiometer,IC Socket,Relay,Connector.Our parts cover such applications as commercial,industrial, and automotives areas.

We are looking forward to setting up business relationship with you and hope to provide you with the best service and solution. Let us make a better world for our industry!



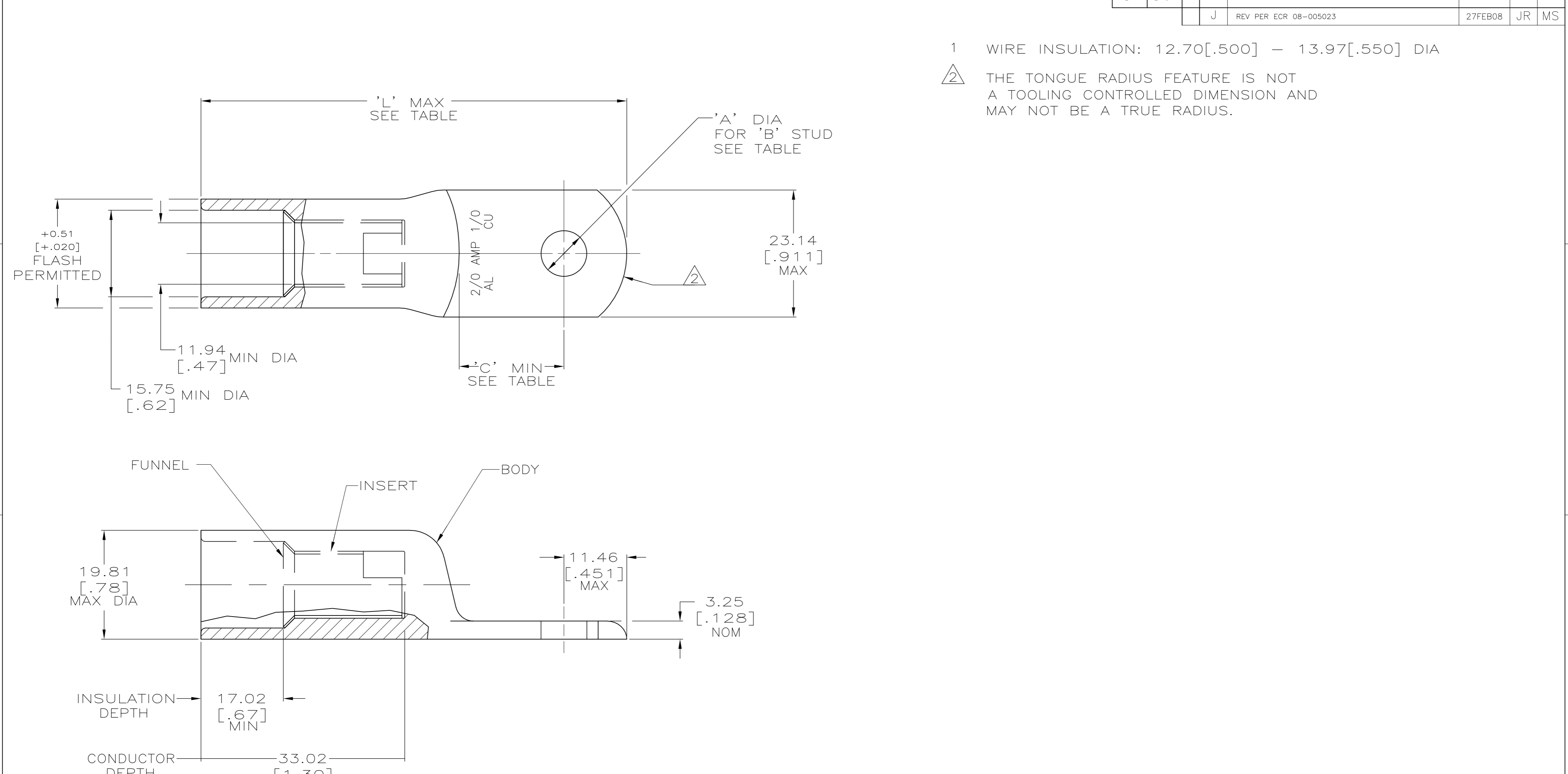
Contact us

Tel: +86-755-8981 8866 Fax: +86-755-8427 6832

Email & Skype: info@chipsmall.com Web: www.chipsmall.com

Address: A1208, Overseas Decoration Building, #122 Zhenhua RD., Futian, Shenzhen, China





- 1 WIRE INSULATION: 12.70[.500] – 13.97[.550] DIA
- 2

THE TONGUE RADIUS FEATURE IS NOT A TOOLING CONTROLLED DIMENSION AND MAY NOT BE A TRUE RADIUS.

78.0 ^{±5} GRAMS	13.08 ^{±0.13} [.515 ^{±.005}]	1/2	77.47 [3.05]	18.03 [.71]	BODY: COPPER ASTM-B187 ANNEALED TIN PL PER MIL-T-10727 0.00381[.000150] MIN THK	277152-5
81 ^{±5} GRAMS	9.91 ^{±0.13} [.390 ^{±.005}]	3/8				277152-4
80 ^{±5} GRAMS	8.33 ^{±0.13} [.328 ^{±.005}]	5/16	71.37 [2.81]	11.94 [.47]	INSERT & FUNNEL: BRASS ASTM B36 NICKEL PL SAE AMS QQ-N-290A, DATED JULY 2000, 0.00254 [.000100] MIN THK	277152-3
76.3 ^{±5} GRAMS	9.91 ^{±0.13} [.390 ^{±.005}]	3/8				277152-2
-	6.73 ^{±0.13} [.265 ^{±.005}]	1/4				277152-1
WEIGHT	'A'	'B'	'L'	'C'	MATERIAL & FINISH	PART NO.

THIS DRAWING IS A CONTROLLED DOCUMENT.

DIMENSIONS:
MM [INCHES]

TOLERANCES UNLESS OTHERWISE SPECIFIED:

0 PLC ± -
1 PLC ± -
2 PLC ± -
3 PLC ± -
4 PLC ± -
ANGLES ± -
FINISH SEE TABLE

DWN
DK SCHRUM
6/23/89

CHK
MS FEHER
10/16/90

APVD
AJ KAUFMAN
10/20/90

PRODUCT SPEC
108-11011

APPLICATION SPEC
114-2134

WEIGHT
SEE TABLE

CUSTOMER DRAWING

Tyco Electronics Corporation
Harrisburg, PA 17105-3608

NAME
WIRE TERMINAL, RING TONGUE, SEALED COPALUM
71.3mm2 [2/0] ALUMINUM
53.9mm2 [1/0] COPPER

SIZE
A2

CAGE CODE
00779

DRAWING NO
C=277152

RESTRICTED TO
-

SCALE
2:1

SHEET
1 of 1

REV
J

AMP 1471-9 REV 31MAR2000