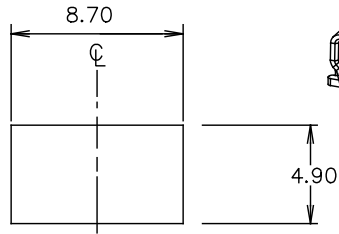
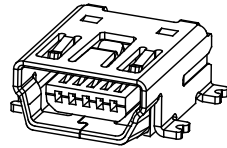


REVISION V

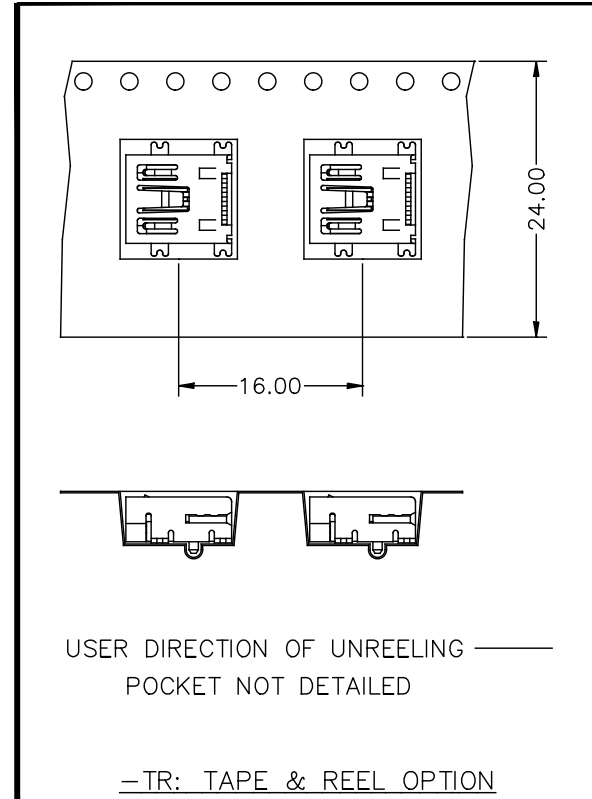
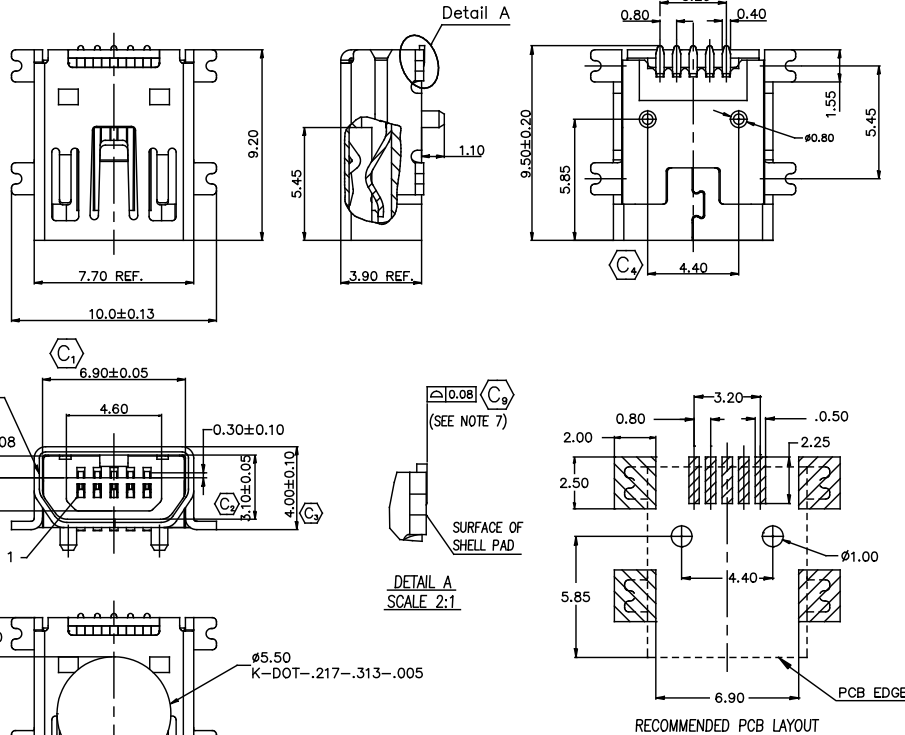
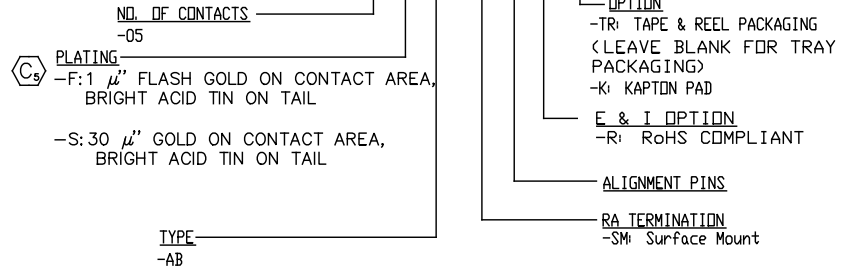
DO NOT SCALE
FORM THIS PRINT



SUGGESTED PANEL CUTOUT DIMENSIONS



MUSB-05-X-AB-SM-A-X-XX



- NOTES:
1. Ⓢ REPRESENTS CRITICAL DIMENSION.
 2. NOTE DELETED.
 3. NOTE DELETED.
 4. CONFIRM THAT PARTS FACE MATCH THIS PRINT.
 5. ALL PARTS RoHS COMPLIANT AS OF REVISION K.
 6. PARTS TO BE PACKAGED LEADS DOWN IN TRAYS.
 7. COPLANARITY MEASUREMENT SHOULD INCLUDE ALL USB TAILS AND SHELL TABS.

KAPTON PAD PLACEMENT

<p>UNLESS OTHERWISE SPECIFIED, DIMENSIONS ARE IN MM. TOLERANCES ARE:</p> <p>DECIMALS ANGLES</p> <p>.X: ±.25 2°</p> <p>.XX: ±.13</p> <p>.XXX: ±.05</p>	<p>PROPRIETARY NOTE</p> <p>THIS DOCUMENT CONTAINS INFORMATION CONFIDENTIAL AND PROPRIETARY TO SAMTEC INC. AND SHALL NOT BE REPRODUCED OR TRANSFERRED TO OTHER DOCUMENTS OR DISCLOSED TO OTHERS OR USED FOR ANY PURPOSE OTHER THAN THAT FOR WHICH IT WAS OBTAINED WITHOUT THE EXPRESSED WRITTEN CONSENT OF SAMTEC INC.</p>	<p style="text-align: right;">CODE: 55322</p> <p style="text-align: center;">samtec</p> <p>520 PARK EAST BLVD. NEW ALBANY, IN 47150 (812) 944-6733 P.O. BOX 1147 TWX: 810-540-4085</p> <p>DESCRIPTION: Mini USB, RA, 5 Pin, Type AB, Single, SMT</p> <p>DWG. NO. MUSB-05-X-AB-SM-A-X-XX</p> <p>BY: J.RILEY 03/23/04 SHEET 1 OF 1</p>
<p>DO NOT SCALE DRAWING</p> <p>INSULATOR: PA6T, RATED UL 94V-0, BLACK</p> <p>CONTACT: PHOS BRONZE</p> <p>SHELL: CU/NI PLATED BRASS</p> <p>MAX FLASH ALLOWED: .051</p> <p>MAX GATE VESTIGE: .051</p> <p>F:\DWG\EXISPRD\ASSEMBLY\N\0\USB</p>	<p>SHEET SCALE: 1:2</p>	