



Chipsmall Limited consists of a professional team with an average of over 10 year of expertise in the distribution of electronic components. Based in Hongkong, we have already established firm and mutual-benefit business relationships with customers from,Europe,America and south Asia,supplying obsolete and hard-to-find components to meet their specific needs.

With the principle of “Quality Parts,Customers Priority,Honest Operation,and Considerate Service”,our business mainly focus on the distribution of electronic components. Line cards we deal with include Microchip,ALPS,ROHM,Xilinx,Pulse,ON,Everlight and Freescale. Main products comprise IC,Modules,Potentiometer,IC Socket,Relay,Connector.Our parts cover such applications as commercial,industrial, and automotives areas.

We are looking forward to setting up business relationship with you and hope to provide you with the best service and solution. Let us make a better world for our industry!



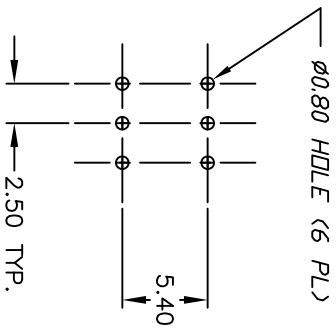
Contact us

Tel: +86-755-8981 8866 Fax: +86-755-8427 6832

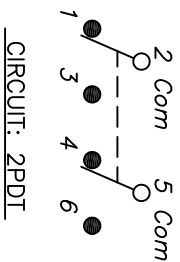
Email & Skype: info@chipsmall.com Web: www.chipsmall.com

Address: A1208, Overseas Decoration Building, #122 Zhenhua RD., Futian, Shenzhen, China





RECOMMENDED P.C.B. LAYOUT



CIRCUIT: 2PDT

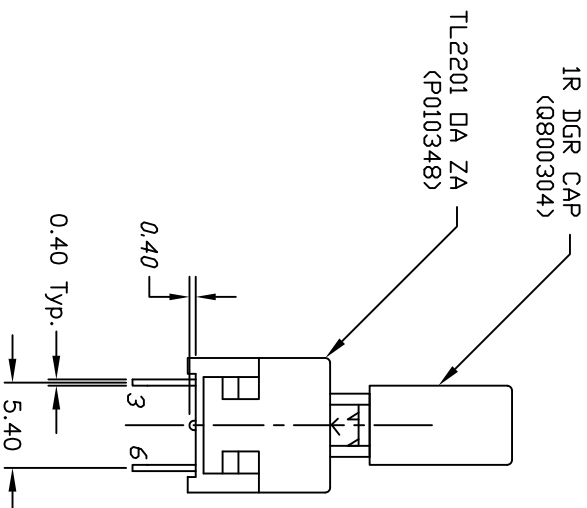
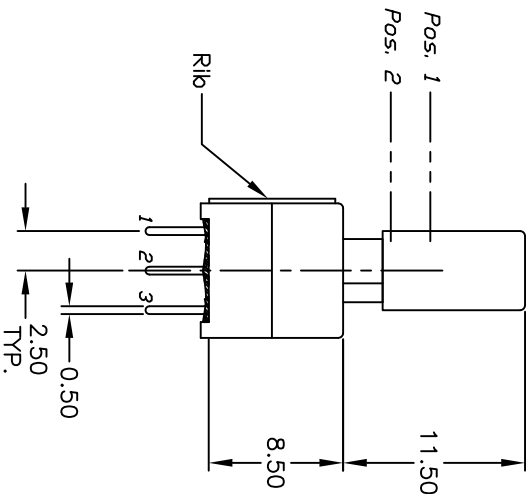
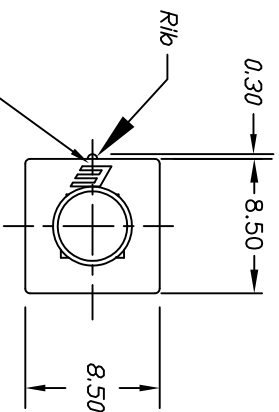
SWITCH FUNCTION		
CONNECTED TERM. #	FUNCTION	POS. 1
2-1,5-4	NORMALLY CLOSED	POS. 1
2-3,5-6	NORMALLY OPEN	POS. 2
2,5	COMMON	

NOTES:

1. ALL DIMENSIONS IN MM
2. GENERAL TOLERANCE: X.X=±0.4
X.XX=±0.25
3. TERM. NOS. FOR REF. ONLY
4. RATING: 0.1A @30V DC
5. TRAVEL: (TO MAKE)= 1.34±0.38
(TOTAL TRAVEL)= 2.50±0.38
(TO LATCH)= 1.50±0.38
6. OPERATING FORCE:180±50gf
7. CONTACT RESISTANCE: 50mILLI—Ohms MAX. Initially
8. ELECTRICAL LIFE (ot Full Load):
10,000 Cycles Make & Brek
- ▲ 9. DESIGNATE MAJOR FEATURE:

B	21126	Q800304 WAS A800304	5/9/13	EBP
A	13506	RELEASED FOR PRODUCTION	10/8/03	AR
REV.	ECN NO.	DESCRIPTION	DATE	CHKD

THE INFORMATION CONTAINED IN THIS DOCUMENT IS PROPRIETARY TO E-SWITCH AND IS NOT TO BE COPIED OR TRANSFERRED



E-SWITCH®

TITLE		TL2201DAZA1RDGR	
SCALE	DATE	DR	DWG
2:1	10/8/03	AR	XSP001A
REV		B	