

# MJTP SERIES - 12 MM SQUARE TACT SWITCHES

## FEATURES

- SPST momentary action.
- Excellent tactile feed-back (Snap dome).
- Long operating life for high reliability.
- Molded-in terminals minimize wicking of flux or solder.
- Flush, round, keyed or square actuator.
- Thru-hole mounting.

## MATERIALS

Case: PBT, color black.  
 Actuator: P.O.M. thermoplastic, color black.  
 Cover: Stainless steel.  
 Terminals: Silver plated brass.  
 Shorting Contact: Silver plated phosphor bronze.



MJTP1212

MJTP1212A

MJTP1212B

MJTP1212C

## GENERAL SPECIFICATIONS

### ELECTRICALS

Contact rating: 50 mA @ 12 VDC  
 Insulation resistance: 100 megohms min. (500 VDC)  
 Dielectric withstanding voltage: 250 VAC for 1 minute  
 Contact resistance: 100 milliohms max.  
 Electrical Life: 100,000 cycles min. (1,000,000 cycles available - consult factory)  
 Contact bounce: less than 5 msec.

### MECHANICALS, THERMALS, ENVIRONMENTALS

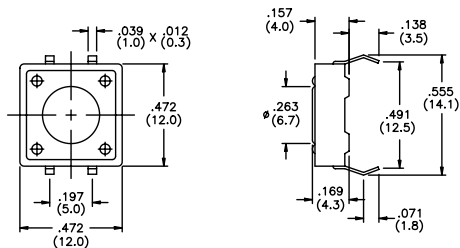
Plunger travel: .012" ± .006" (0.30 ± 0.15 mm)  
 Actuation force: 160 grams ± 50 grams (.35 lbs.)  
 Operating temperature range: -20°C to +70°C  
 Storage temperature range: -30°C to +80°C for 96 hours  
 Shock resistance: 30G (peak value) for 11 millisecond per Method 213B, MIL-STD-202F (3 times each on 6 sides).  
 Vibration resistance: 10-55-10 Hz. for 1 minute in X, Y and Z planes per Method 201A, MIL-STD-202F (2 hours in each direction).

### SOLDERING

Wave soldering: 260°C max. for 5 seconds max..  
 Hand soldering: 30 watt iron max. controlled at 320°C for approx. 2 seconds  
 Solvent washing: Non-washable.

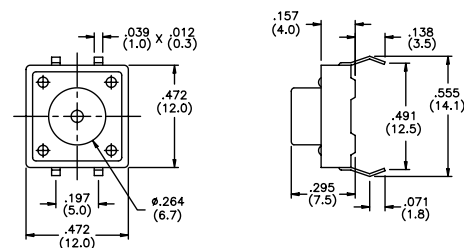
### US # MJTP1212 EU # PHAP3320

Flush actuator



### US # MJTP1212A EU # PHAP3320A

Round actuator

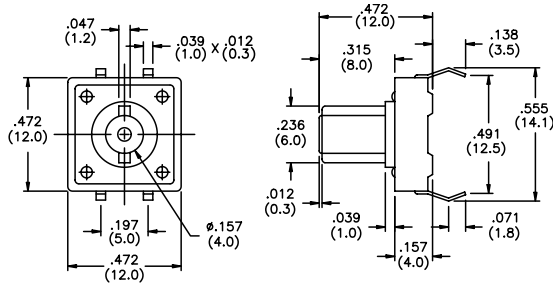


SPECIFICATIONS SUBJECT TO CHANGE WITHOUT NOTICE.

M

**US # MJTP1212B EU # PHAP3320B**

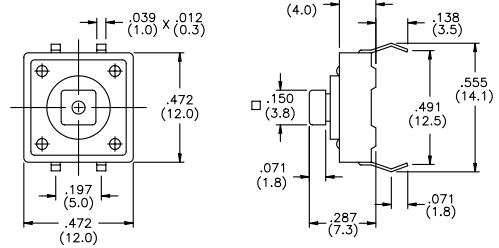
Round keyed actuator



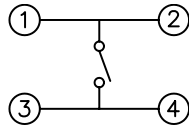
**US # MJTP1212C EU # PHAP3321**

Square actuator

Caps available - see below

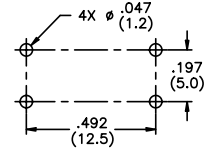


**SCHEMATIC**



**PRINTED CIRCUIT BOARD LAYOUT**

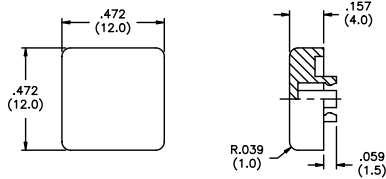
Layout Tolerances;  
Linear: ± .004" ( ± 0,1mm)  
Holes: ± .002" ( ± 0,05mm)



**CAPS (for MJTP1212C only)**

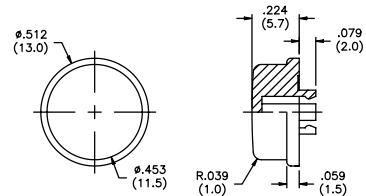
**US # MJ121 EU # U5540**

Square cap



**US # MJ122 EU # U5550**

Round cap



M

Note - add digit from table to cap part numbers above for color.  
Example - **MJ1212** indicates square black cap.

No.	Color
1	blue
2	black
3	green
5	yellow
6	red
7	ivory

SPECIFICATIONS SUBJECT TO CHANGE WITHOUT NOTICE.