



Chipsmall Limited consists of a professional team with an average of over 10 year of expertise in the distribution of electronic components. Based in Hongkong, we have already established firm and mutual-benefit business relationships with customers from,Europe,America and south Asia,supplying obsolete and hard-to-find components to meet their specific needs.

With the principle of “Quality Parts,Customers Priority,Honest Operation,and Considerate Service”,our business mainly focus on the distribution of electronic components. Line cards we deal with include Microchip,ALPS,ROHM,Xilinx,Pulse,ON,Everlight and Freescale. Main products comprise IC,Modules,Potentiometer,IC Socket,Relay,Connector.Our parts cover such applications as commercial,industrial, and automotives areas.

We are looking forward to setting up business relationship with you and hope to provide you with the best service and solution. Let us make a better world for our industry!



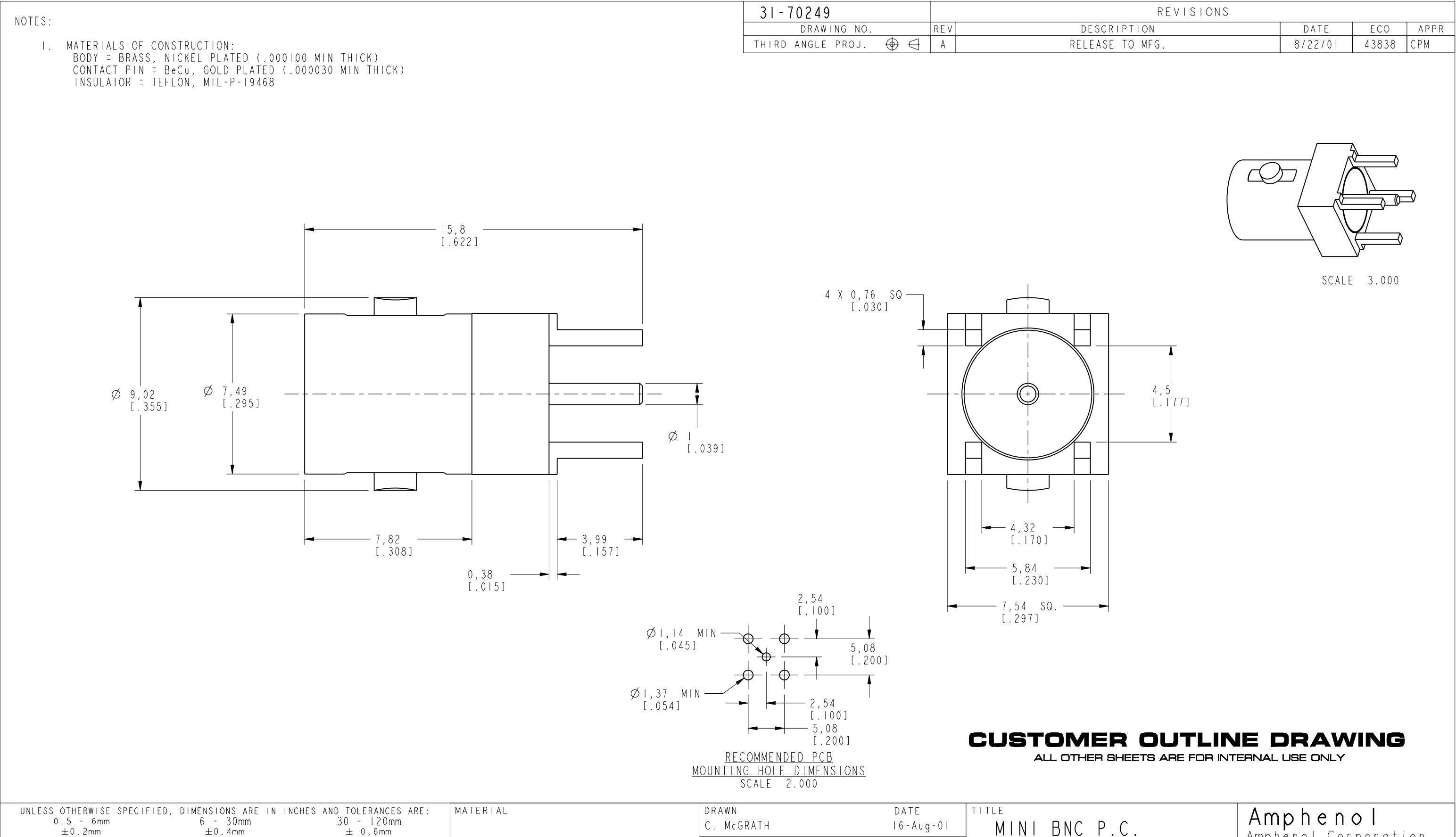
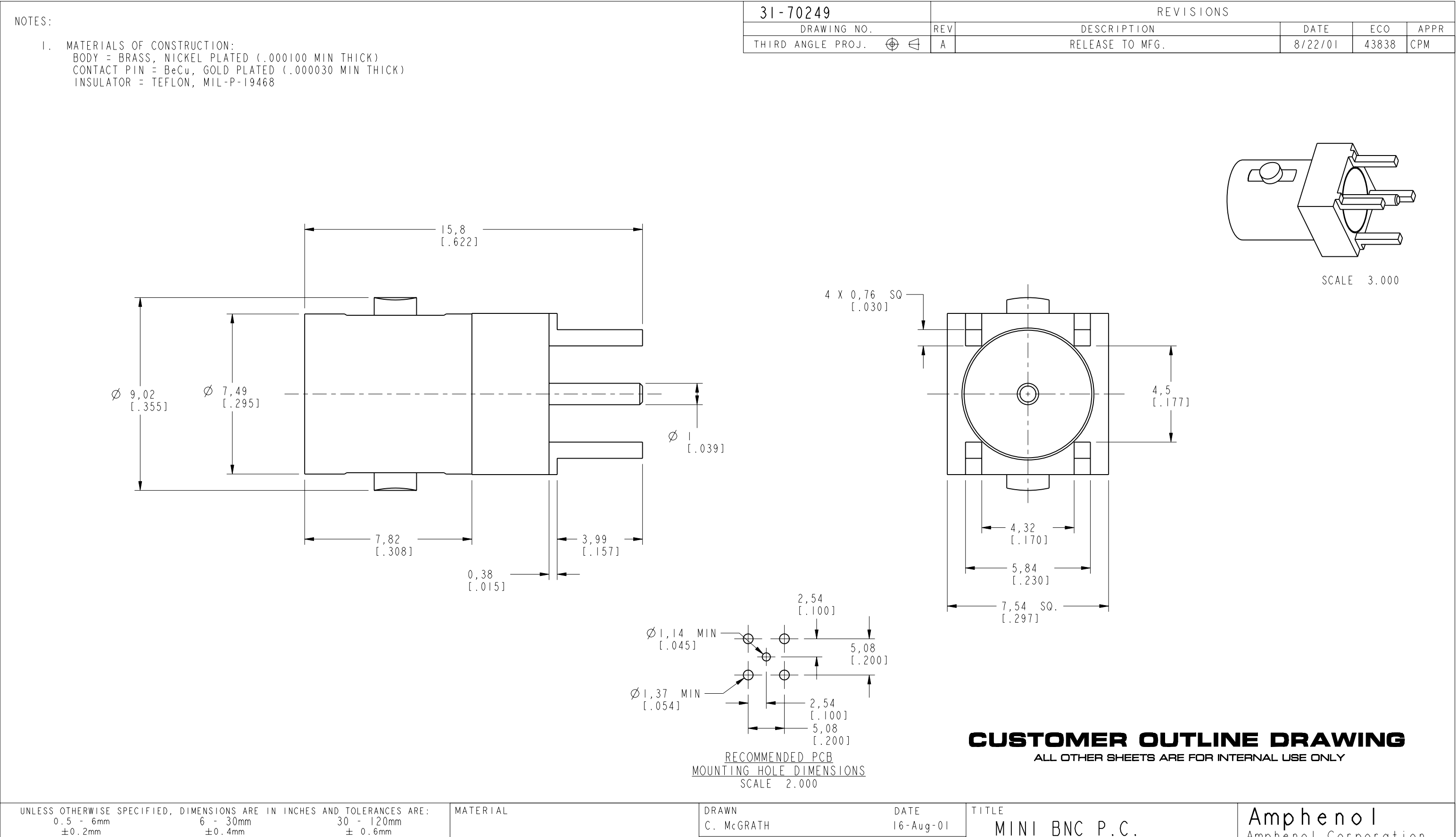
## Contact us

Tel: +86-755-8981 8866 Fax: +86-755-8427 6832

Email & Skype: [info@chipsmall.com](mailto:info@chipsmall.com) Web: [www.chipsmall.com](http://www.chipsmall.com)

Address: A1208, Overseas Decoration Building, #122 Zhenhua RD., Futian, Shenzhen, China



[illegible][illegible][illegible]

	31-70249	REVISIONS						
DRAWING NO.	REV	DESCRIPTION				DATE	ECO	APPR
THIRD ANGLE PROJ.	A	RELEASE TO MFG.				8/22/01	43838	CPM

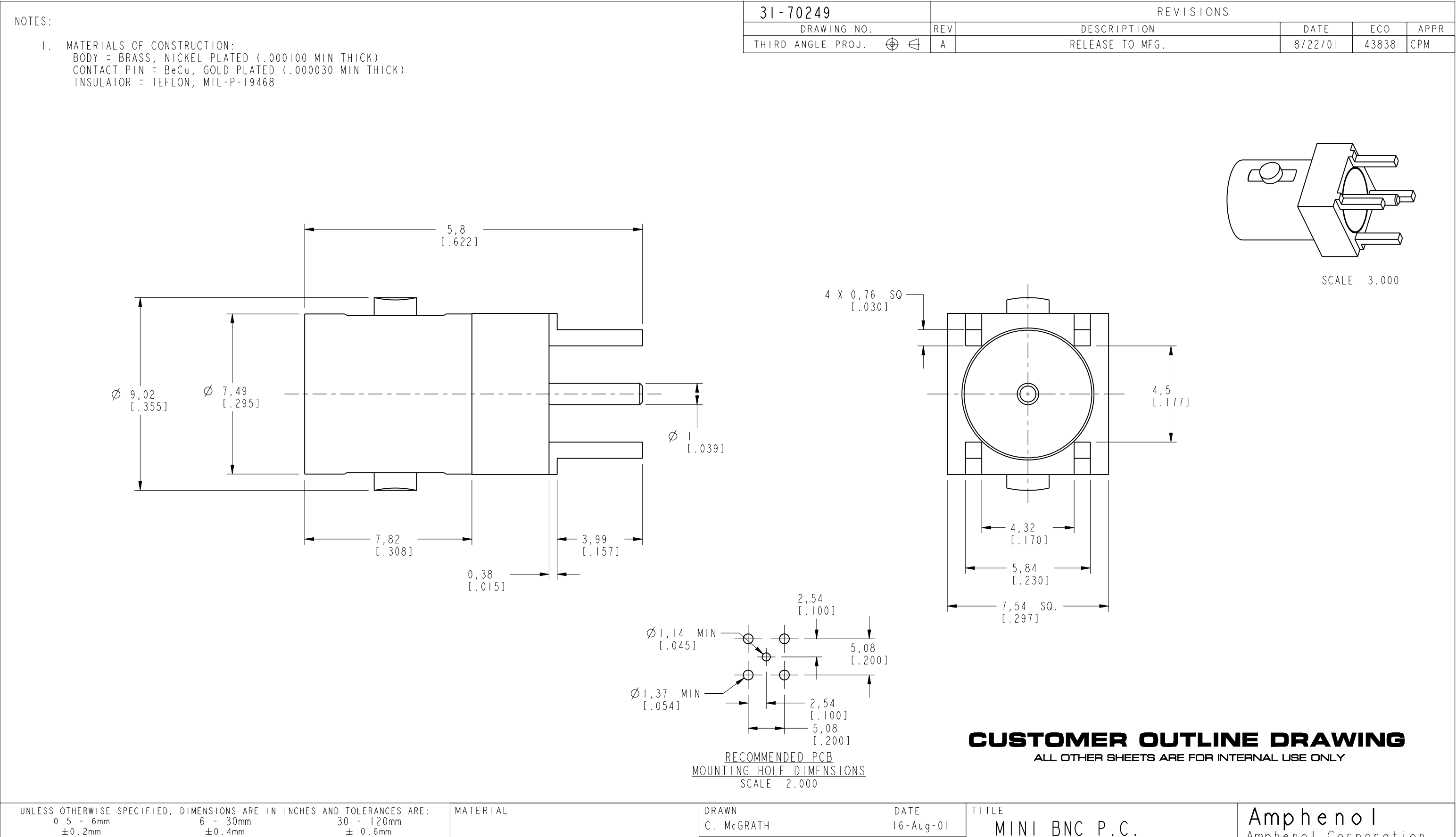
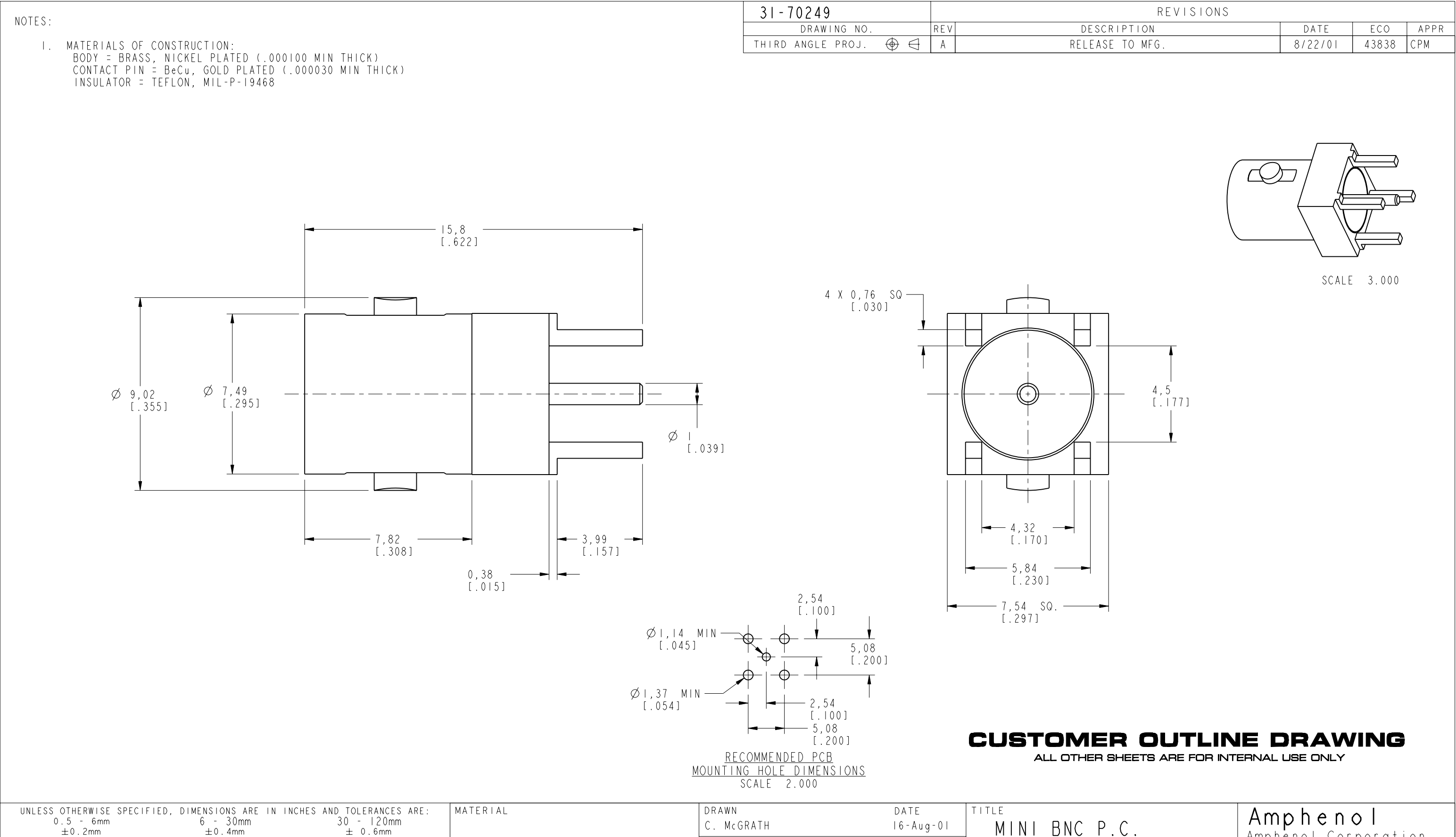
NOTES:

I. MATERIALS OF CONSTRUCTION:  
BODY = BRASS, NICKEL PLATED (.000100 MIN THICK)  
CONTACT PIN = BeCu, GOLD PLATED (.000030 MIN THICK)  
INSULATOR = TEFLON, MIL-P-19468

The technical drawing includes four views of the Mini BNC P.C.:  
1. Side View: Shows overall length of 15.8 [ .622 ], body diameter of Ø 9.02 [ .355 ], pin diameter of Ø 7.49 [ .295 ], and various offsets like 7.82 [ .308 ] and 3.99 [ .157 ].  
2. Front View: Shows a circular face with a central pin of diameter Ø 1 [ .039 ], four square features labeled 4 X 0.76 SQ [ .030 ], and horizontal dimensions of 4.32 [ .170 ], 5.84 [ .230 ], and 7.54 SQ [ .297 ].  
3. Top View: Shows a rectangular footprint with width 4.5 [ .177 ] and height-related dimensions.  
4. Recommended PCB Mounting Hole Dimensions: A detailed view of the four mounting holes with diameters Ø 1.14 MIN [ .045 ] and Ø 1.37 MIN [ .054 ], and center-to-center distances of 2.54 [ .100 ] and 5.08 [ .200 ].

CUSTOMER OUTLINE DRAWING  
ALL OTHER SHEETS ARE FOR INTERNAL USE ONLY

UNLESS OTHERWISE SPECIFIED, DIMENSIONS ARE IN INCHES AND TOLERANCES ARE: 0.5 - 6mm ±0.2mm    6 - 30mm ±0.4mm    30 - 120mm ± 0.6mm	MATERIAL	DRAWN C. McGrath	DATE 16-Aug-01	TITLE MINI BNC P.C.	Amphenol Corporation
---	----------	---------------------	-------------------	------------------------	----------------------

[illegible][illegible][illegible]