



Chipsmall Limited consists of a professional team with an average of over 10 year of expertise in the distribution of electronic components. Based in Hongkong, we have already established firm and mutual-benefit business relationships with customers from,Europe,America and south Asia,supplying obsolete and hard-to-find components to meet their specific needs.

With the principle of “Quality Parts,Customers Priority,Honest Operation,and Considerate Service”,our business mainly focus on the distribution of electronic components. Line cards we deal with include Microchip,ALPS,ROHM,Xilinx,Pulse,ON,Everlight and Freescale. Main products comprise IC,Modules,Potentiometer,IC Socket,Relay,Connector.Our parts cover such applications as commercial,industrial, and automotives areas.

We are looking forward to setting up business relationship with you and hope to provide you with the best service and solution. Let us make a better world for our industry!



Contact us

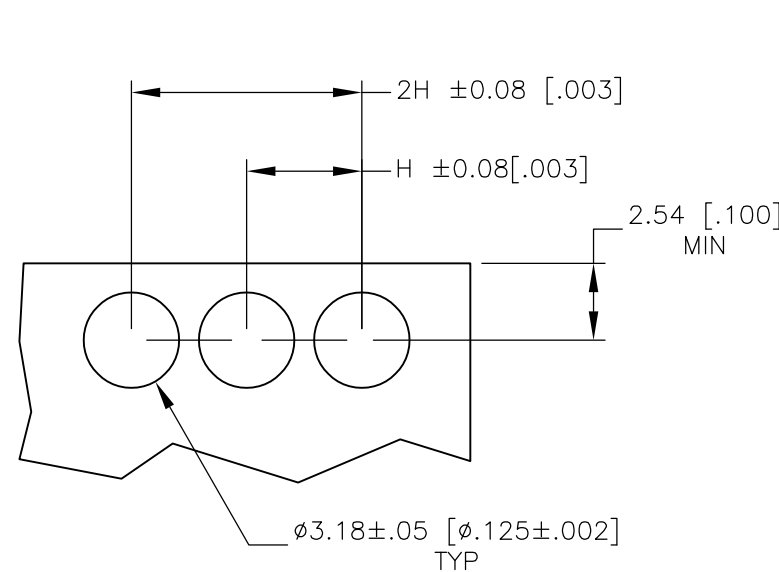
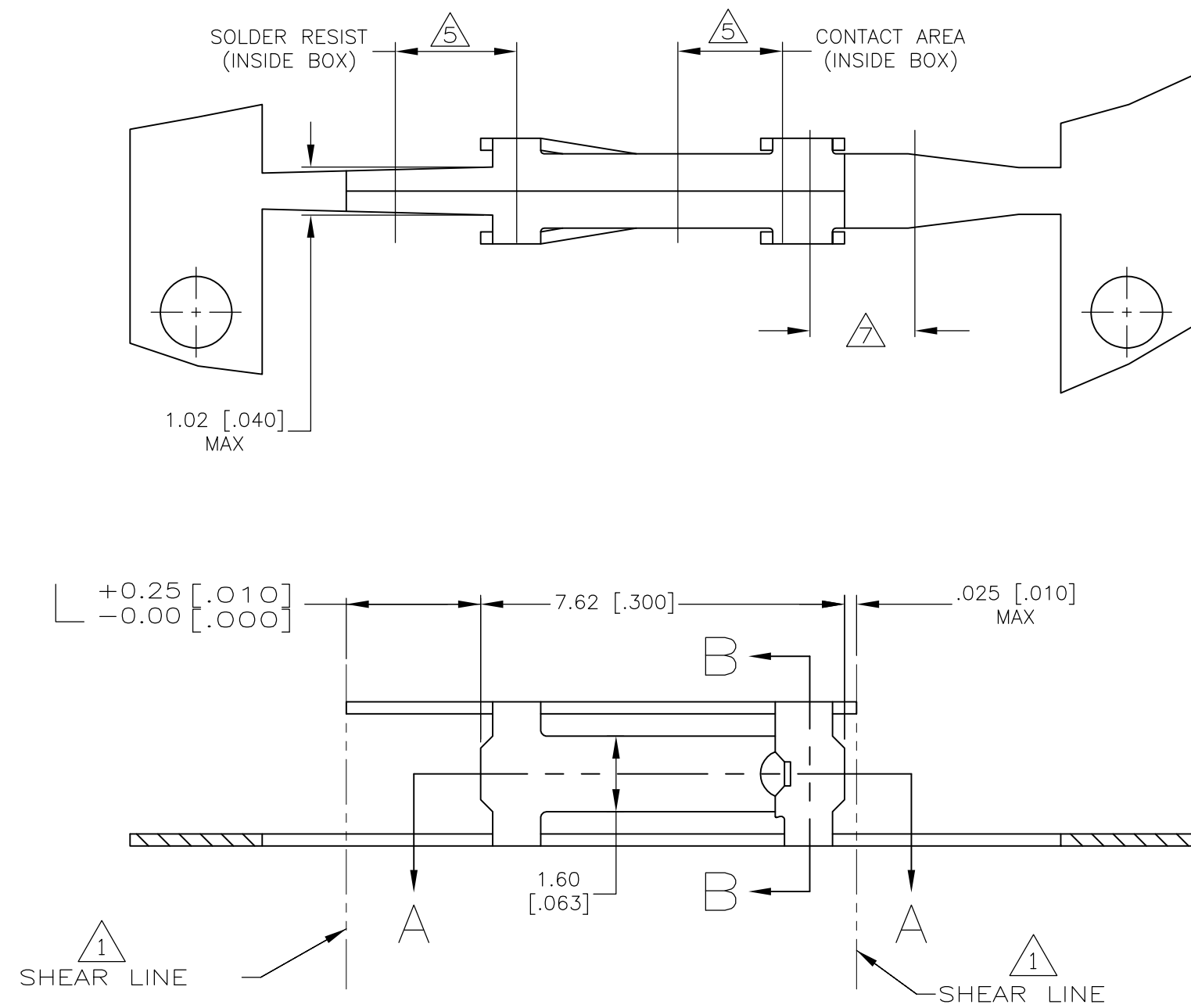
Tel: +86-755-8981 8866 Fax: +86-755-8427 6832

Email & Skype: info@chipsmall.com Web: www.chipsmall.com

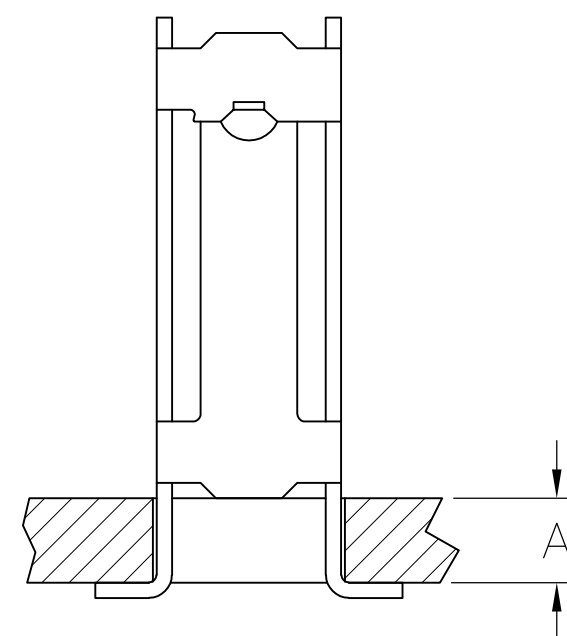
Address: A1208, Overseas Decoration Building, #122 Zhenhua RD., Futian, Shenzhen, China



LOC	DIST	REVISIONS					
AD	00	P	LTR	DESCRIPTION	DATE	DWN	APVD
			L	REV PER 0G3C-0057-01	-	MB	MZ
			L1	REVISED PER ECO-09-021826	26AUG09	KK	AEG

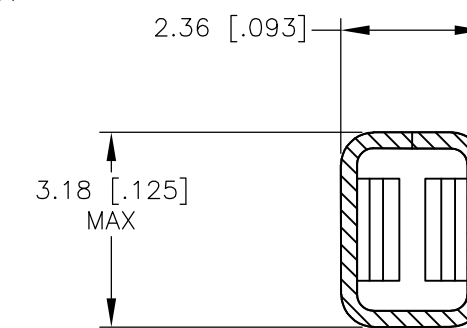


RECOMMENDED P.C. BOARD LAYOUT

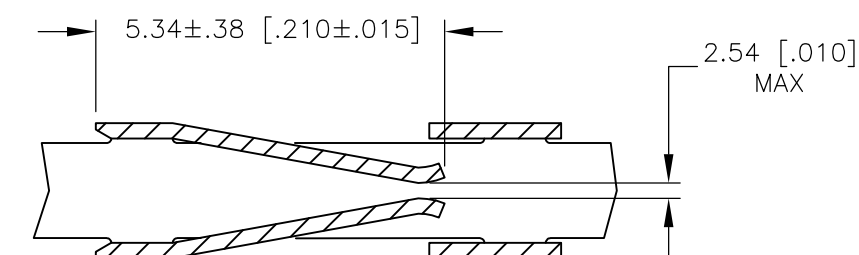


TYPICAL APPLICATION

1. SHEAR LINES DEFINE LOOSE PIECE PART.
2. FOR USE WITH AMPMODU MINIATURE APPLICATOR.
3. CONTACT MAT'L: COPPER-NICKEL-TIN ALLOY 725.
4. "H", (RECEPTACLE CENTERS) MAY VARY DEPENDING ON REQUIREMENTS, MINIMUM NOMINAL CENTER SPACING BETWEEN ADJACENT RECEPTACLES IS $3.8 \pm 0.08 [1.50 \pm 0.003]$.
5. FINISH $0.00076 [0.00030]$ MIN W.E. #1 ALLOY OVER $0.00127 [0.00050]$ MIN NICKEL INLAID INTO CONTACT AREA, $0.01270 [0.000500]$ MIN ALUMINUM INLAID INTO SELECT AREA OF SOLDER TINE, REMAINDER UNFINISHED.
6. A MILDLY ACTIVATED FLUX IS REQUIRED TO SOLDER.
7. IF ALTN STOCK IS USED SOLDER RESIST WILL APPEAR IN THIS AREA ALSO.
8. OBSOLETE.
9. OBSOLETE PARTS: OBSOLETE CIS STREAMLINING PER D.RENAUD/D.SINISI




SECTION B—B



SECTION A—A

9	OBSOLETE	COMP-U-SERTOR	1.40/1.78 [.055/.070]	3	5	2.84 [.112]	—	87772-3
		MINIATURE	1.40/1.78 [.055/.070]	3	5	2.84 [.112]	87776-2	87772-2
	OBSOLETE	MINIATURE	1.40/2.62 [.055/.103]	3	5	3.68 [.145]	87776-1	87772-1
		REELED FOR APPLICATOR	A	MATL 7	FINISH	TIME LGTH	LOOSE PIECE PART NO.	PART NUMBER

THIS DRAWING IS A CONTROLLED DOCUMENT.		DWN E. BRANDBERG 7-14-94		Tyco Electronics Corporation Harrisburg, PA 17105	
DIMENSIONS: INCHES		CHK J. HERRINGTON 7-14-94		AMP CONTACT, FEMALE, MOD I, TYPE A, STAN. PRESS. (FOR ROUND HOLE MOUNTING) —	
TOLERANCES UNLESS OTHERWISE SPECIFIED:		APVD —			
		PRODUCT SPEC —			
0 PLC ± — 1 PLC ± — 2 PLC ± — 3 PLC ± 0.13 [.005] 4 PLC ± — ANGLES ± ± —		APPLICATION SPEC —		—	
MATERIAL SEE TABLE		FINISH SEE TABLE		RESTRICTED TO —	
		WEIGHT —		—	
		CUSTOMER DRAWING		—	

SIZE	CAGE CODE	DRAWING NO	RESTRICTED TO
A2	00779	C-87772	—

SCALE	SHEET	OF	REV
8:1	1	1	1