



Chipsmall Limited consists of a professional team with an average of over 10 year of expertise in the distribution of electronic components. Based in Hongkong, we have already established firm and mutual-benefit business relationships with customers from,Europe,America and south Asia,supplying obsolete and hard-to-find components to meet their specific needs.

With the principle of "Quality Parts,Customers Priority,Honest Operation,and Considerate Service",our business mainly focus on the distribution of electronic components. Line cards we deal with include Microchip,ALPS,ROHM,Xilinx,Pulse,ON,Everlight and Freescale. Main products comprise IC,Modules,Potentiometer,IC Socket,Relay,Connector.Our parts cover such applications as commercial,industrial, and automotives areas.

We are looking forward to setting up business relationship with you and hope to provide you with the best service and solution. Let us make a better world for our industry!



Contact us

Tel: +86-755-8981 8866 Fax: +86-755-8427 6832

Email & Skype: info@chipsmall.com Web: www.chipsmall.com

Address: A1208, Overseas Decoration Building, #122 Zhenhua RD., Futian, Shenzhen, China

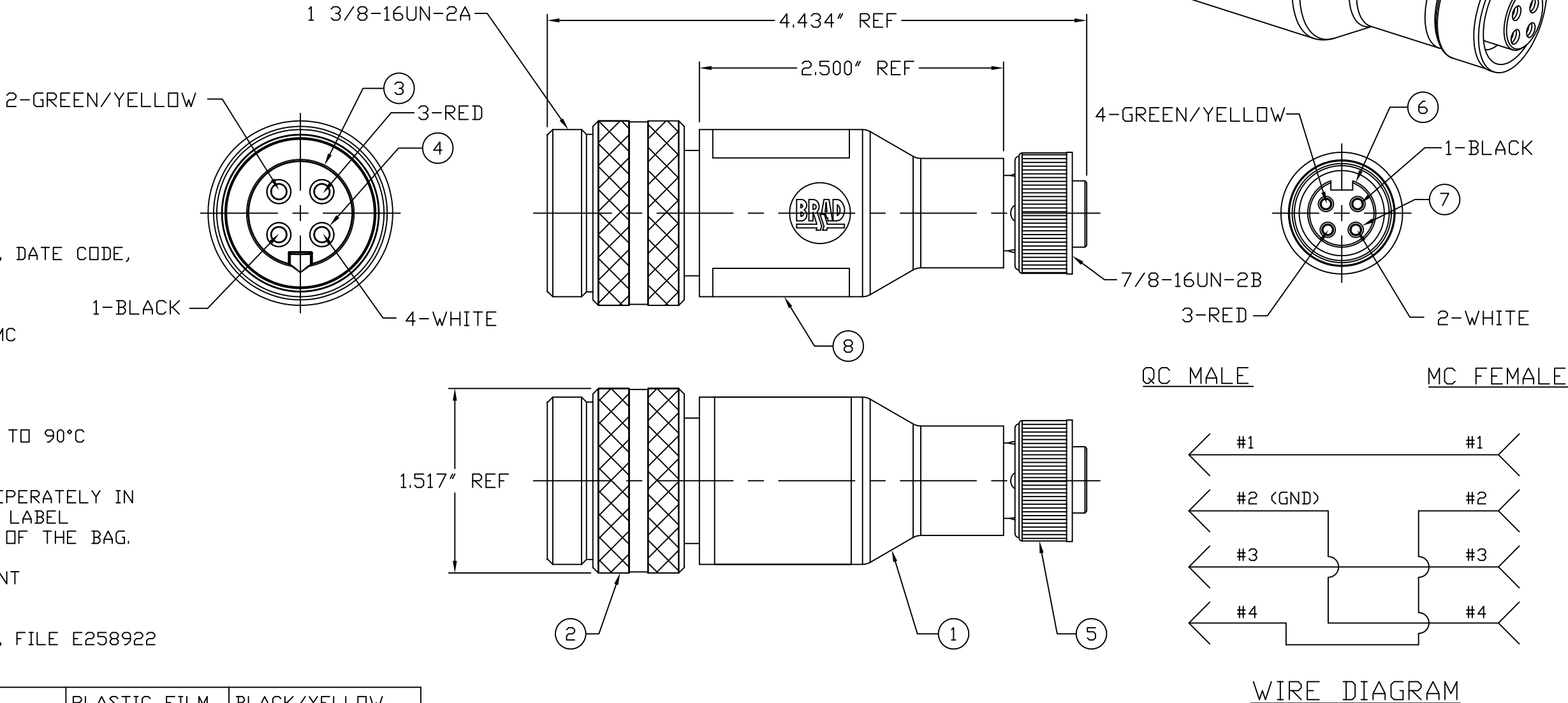


PART NUMBER	ENGINEERING NUMBER
1300680019	1C4030-001

NOTE:

- 1) LABEL IS MARKED WITH P/N, DATE CODE, VOLTAGE & AMPERAGE
- 2) ELECTRICAL DATA:
REDUCING ADAPTER QC TO MC
POLES: 4
MAX. VOLTAGE: 600V AC/DC
MAX.CURRENT: 15A
PROTECTION: IP67
TEMPERATURE RANGE: -20°C TO 90°C
- 3) PACKAGING:
ASSEMBLIES ARE BAGGED SEPERATELY IN POLY BAGS WITH BAR CODE LABEL ATTACHED TO THE OUTSIDE OF THE BAG.
- 4) ASSEMBLY IS RoHS COMPLIANT
- 5) CERTIFICATION:
UL LISTED/CSA CERTIFIED , FILE E258922

8	1	LABEL	PLASTIC FILM	BLACK/YELLOW
7	4	MC SOCKET CONTACT	COPPER ALLOY	GOLD PLATED
6	1	MC INSERT	PVC	BLACK
5	1	MC COUPLING NUT	ZINC ALLOY	BLACK E-COAT
4	4	QC PIN CONTACT	COPPER ALLOY	GOLD PLATED
3	1	QC INSERT	PVC	BLACK
2	1	QC COUPLING NUT	ALUMINUM	CLEAR ANODIZE
1	1	OVERMOLD	PVC	GRAY
ITEM	QTY	DESCRIPTION	MATERIAL	FINISH



RELEASED EC NO: WNA2010-0424 DRWN: KJOZWIK 2010/01/12 CHKD: BWOODMAN APPR: JFMURPHY 2010/01/15 A	DESCRIPTION REV	QUALITY SYMBOLS ▽=0 ▽C=0	GENERAL TOLERANCES (UNLESS SPECIFIED)			DIMENSION STYLE		SCALE	DESIGN UNITS	THIRD ANGLE PROJECTION	
						IN/MM		1:1	INCH		
				mm	INCH	DRAWN BY	DATE	TITLE BRAD POWER PASS-THRU 4 POLE QC AC MALE/MC FEMALE MOLEX INCORPORATED			
			4 PLACES	±---	±---	KJOZWIK	2010/01/12				
			3 PLACES	±---	±.005	CHECKED BY	DATE				
			2 PLACES	±0.13	±.010	BWOODMAN	2010/01/11				
			1 PLACE	±0.25	±.020	APPROVED BY	DATE	molex			
			ANGULAR ±1/2°			JFMURPHY	2010/01/15				
DRAFT WHERE APPLICABLE MUST REMAIN WITHIN DIMENSIONS			MATERIAL NO.		DOCUMENT NO.		SHEET NO.				
			SEE TABLE		SD-130068-003		1 OF 1				
SIZE		THIS DRAWING CONTAINS INFORMATION THAT IS PROPRIETARY TO MOLEX INCORPORATED AND SHOULD NOT BE USED WITHOUT WRITTEN PERMISSION									
B											