



Chipsmall Limited consists of a professional team with an average of over 10 year of expertise in the distribution of electronic components. Based in Hongkong, we have already established firm and mutual-benefit business relationships with customers from,Europe,America and south Asia,supplying obsolete and hard-to-find components to meet their specific needs.

With the principle of “Quality Parts,Customers Priority,Honest Operation,and Considerate Service”,our business mainly focus on the distribution of electronic components. Line cards we deal with include Microchip,ALPS,ROHM,Xilinx,Pulse,ON,Everlight and Freescale. Main products comprise IC,Modules,Potentiometer,IC Socket,Relay,Connector.Our parts cover such applications as commercial,industrial, and automotives areas.

We are looking forward to setting up business relationship with you and hope to provide you with the best service and solution. Let us make a better world for our industry!



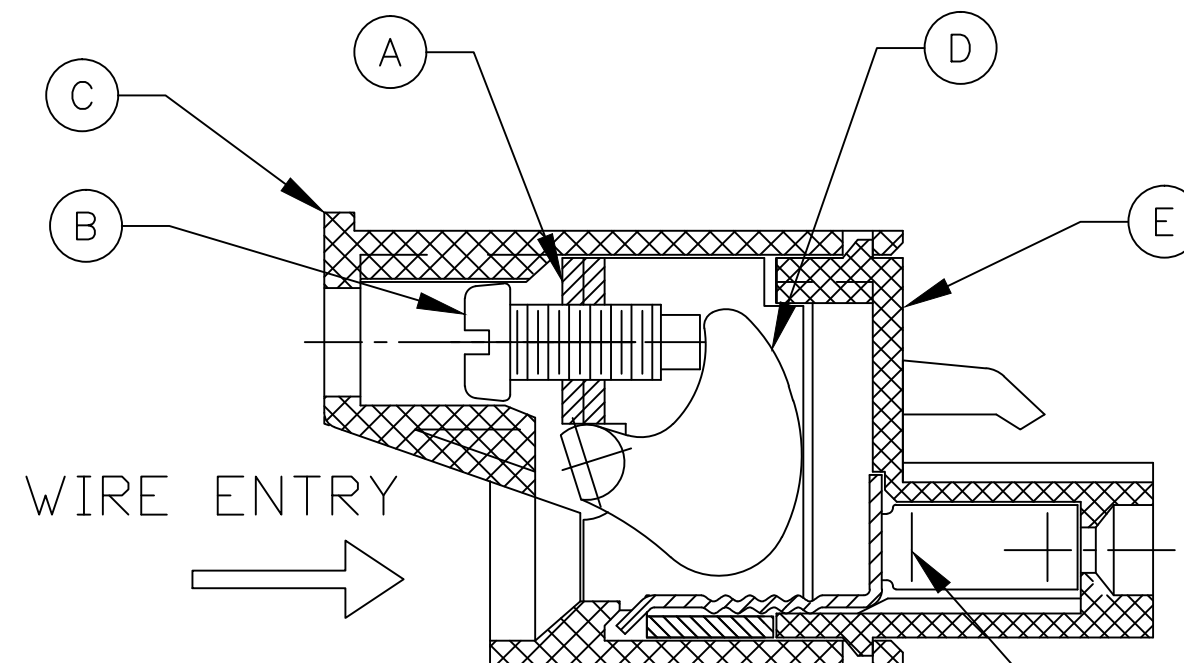
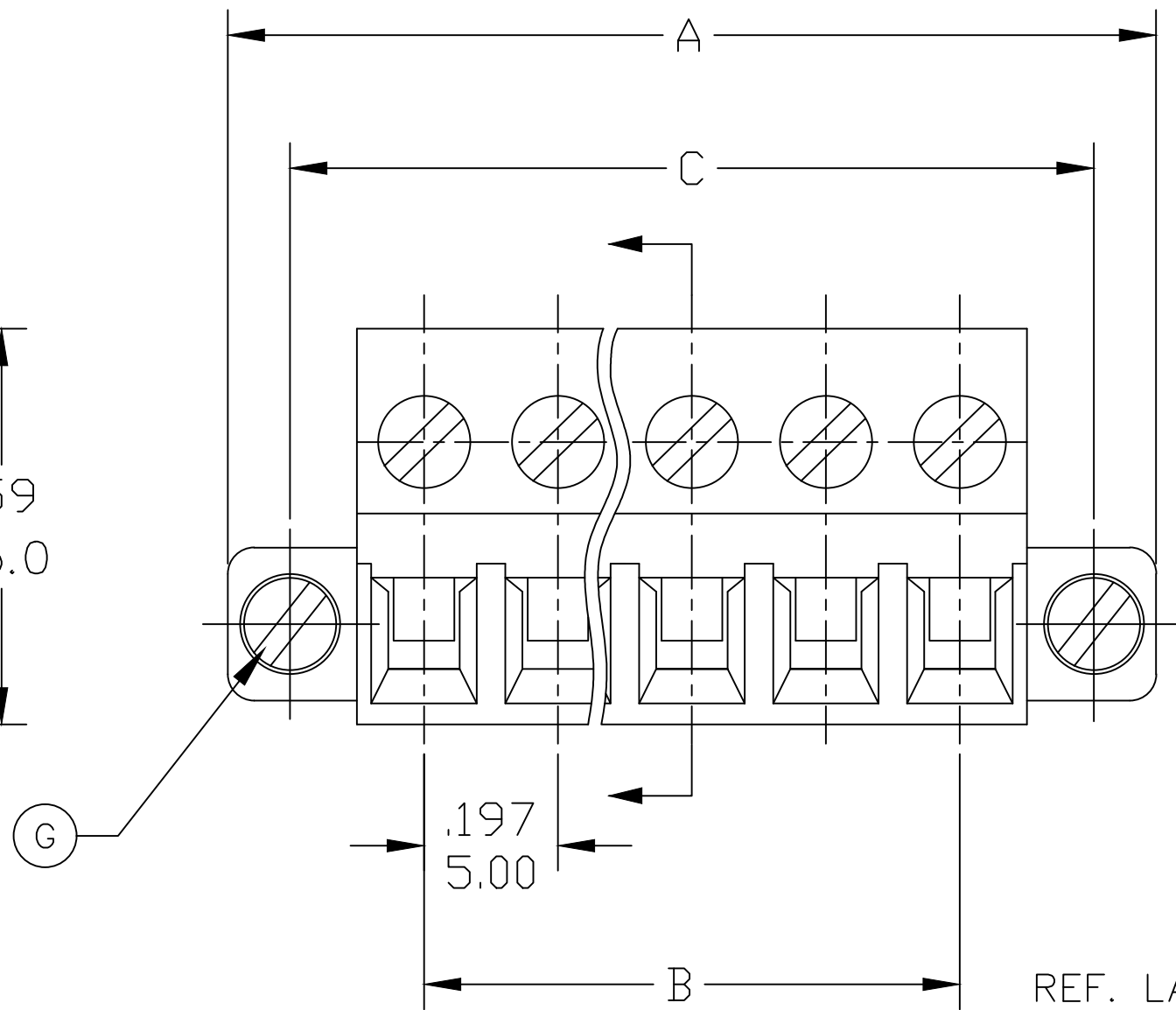
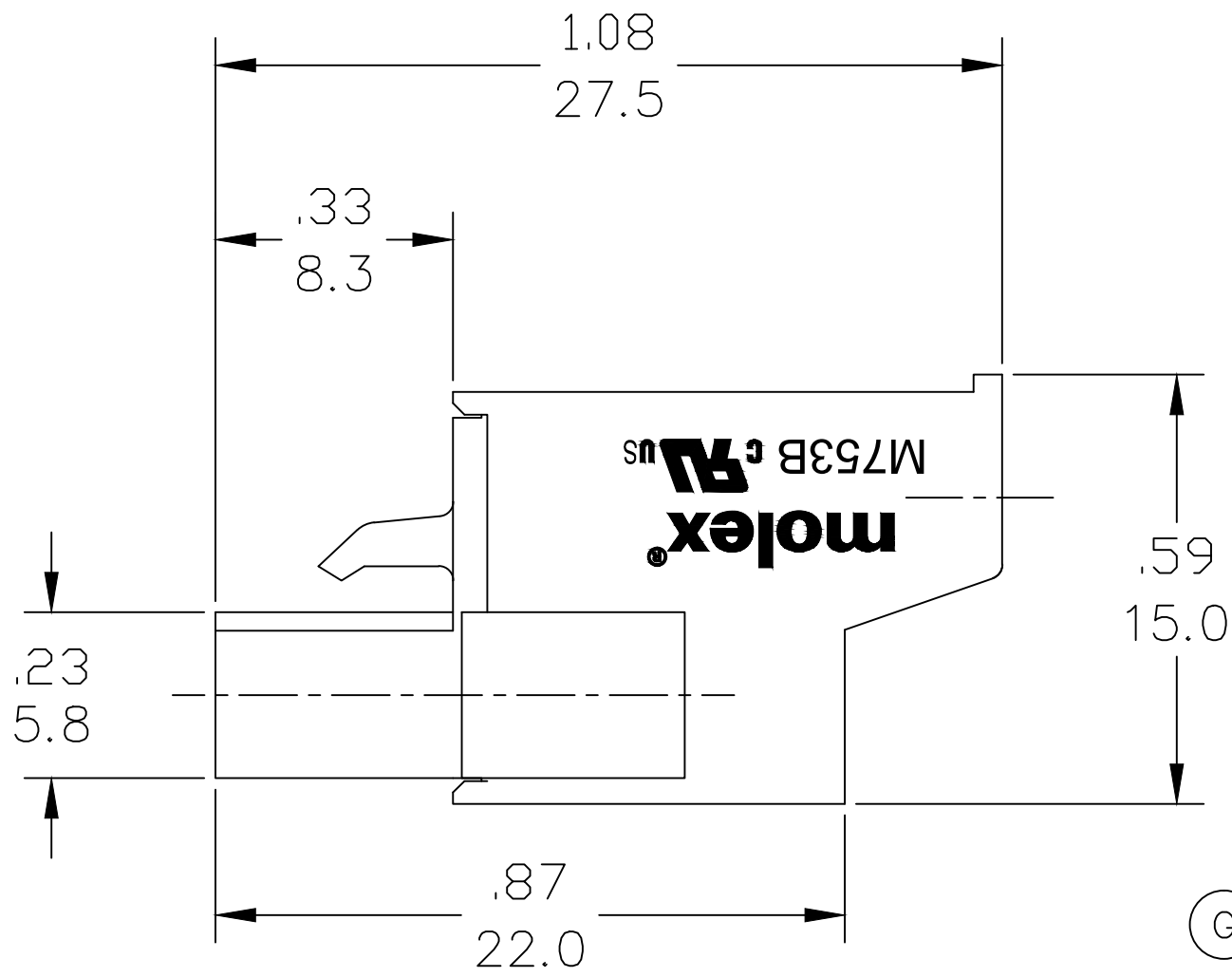
Contact us

Tel: +86-755-8981 8866 Fax: +86-755-8427 6832

Email & Skype: info@chipsmall.com Web: www.chipsmall.com

Address: A1208, Overseas Decoration Building, #122 Zhenhua RD., Futian, Shenzhen, China





REF. LAST 2 DIGITS OF PART NUMBER EQUALS CIRCUIT COUNT

M753B-00-1-XX-3

SERIES
STYLE
PITCH
POSITIONS
COLOR

PART NUMBER DATA									
CIRCUITS	PART NUMBER	ENGINEERING NUMBER	COLOR	A IN	mm	B IN	mm	C IN	mm
2	397100002	M753B-00-1-02-3	GREEN	.78	19.8	.197	5.00	.591	15.00
3	397100003	M753B-00-1-03-3	GREEN	.98	24.8	.394	10.00	.787	20.01
4	397100004	M753B-00-1-04-3	GREEN	1.17	29.8	.590	15.00	.984	25.00
5	397100005	M753B-00-1-05-3	GREEN	1.37	34.8	.787	19.99	1.181	30.00
6	397100006	M753B-00-1-06-3	GREEN	1.57	39.8	.984	24.99	1.378	35.00
7	397100007	M753B-00-1-07-3	GREEN	1.76	44.8	1.181	29.99	1.575	40.00
8	397100008	M753B-00-1-08-3	GREEN	1.96	49.8	1.378	34.99	1.772	45.00
9	397100009	M753B-00-1-09-3	GREEN	2.16	54.8	1.574	39.99	1.969	50.00
10	397100010	M753B-00-1-10-3	GREEN	2.35	59.8	1.771	44.99	2.165	55.00
11	397100011	M753B-00-1-11-3	GREEN	2.55	64.8	1.968	49.99	2.362	60.00
12	397100012	M753B-00-1-12-3	GREEN	2.75	69.8	2.165	54.99	2.559	65.00
13		M753B-00-1-13-3	GREEN	2.95	74.8	2.362	59.98	2.756	70.00
14		M753B-00-1-14-3	GREEN	3.14	79.8	2.558	64.98	2.953	75.00
15		M753B-00-1-15-3	GREEN	3.34	84.8	2.755	69.98	3.150	80.00
16		M753B-00-1-16-3	GREEN	3.54	89.8	2.952	74.98	3.346	85.00
17		M753B-00-1-17-3	GREEN	3.73	94.8	3.149	79.98	3.543	90.00
18		M753B-00-1-18-3	GREEN	3.93	99.8	3.346	84.98	3.740	95.00
19		M753B-00-1-19-3	GREEN	4.13	104.8	3.542	89.98	3.937	100.00
20		M753B-00-1-20-3	GREEN	4.32	109.8	3.739	94.98	4.134	105.00
21		M753B-00-1-21-3	GREEN	4.52	114.8	3.936	99.97	4.331	110.00
22		M753B-00-1-22-3	GREEN	4.72	119.8	4.133	104.97	4.528	115.00
23		M753B-00-1-23-3	GREEN	4.91	124.8	4.330	109.97	4.724	120.00
24		M753B-00-1-24-3	GREEN	5.11	129.8	4.526	114.97	4.921	125.00

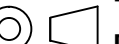
SPECIFICATIONS:

- MATERIAL:
 - BLOCK: STEEL ZINC PLATED
 - SCREW: M2.5, STEEL ZINC PLATED
 - BODY: PA66 UL94 V-0
 - CAM: STAINLESS STEEL
 - COVER: PA66 UL94 V-0
 - TERMINAL: BRASS TIN PLATED
 - MOUNTING SCREW: M2.5, STEEL ZINC PLATED

TOLERANCES			
MM	TOL	INCH	TOL
0-6	±0.25	0-.24	±.010
>6-30	±0.40	.24-1.18	±.016
>30-120	±0.50	1.18-4.76	±.020
>120	±0.80	>4.76	±.031

CONTACT FACTORY FOR OPTIONAL COLORS

- WIRE SIZE: 30 TO 12AWG
- RATING: 15A AT 51-150V, 15A AT 151-300V
- MAX TORQUE: 3.5 IN. LBS. (.4 Nm)
- WIRE STRIP: .37 (9.5mm)
- DIELECTRIC VOLTAGE WITHSTAND: AC 2500V FOR 1 MINUTE
- INSULATION RESISTANCE: DC 500V, 500MΩ
- RATED IMPULSE VOLTAGE: 4000V, PLUS AND MINUS 5 TIMES EACH
- OPERATING TEMPERATURE: -40°C TO +105°C
- DIMS SHOWN ARE FOR REFERENCE ONLY

REVISED DOC TOL EC NO: IPG2017-0881 DRWN: ABENJAMI CH'KD: --- APPR: BRUPERT 2014/10/16 A1		DESCRIPTION	QUALITY SYMBOL <div>▽=0</div> <div>▽C=0</div>	GENERAL TOLERANCES (UNLESS SPECIFIED)		DIMENSION STYLE IN/MM		SCALE ---	DESIGN UNITS METRIC	 THIRD ANGLE PROJECTION	
					mm	INCH	DRAWN BY RSTONE	DATE 2014/03/17	TITLE TERMINAL PLUG, 5.0MM HORIZONTAL SCREW WITH MOUNTING ENDS	MOLEX INCORPORATED	
				4 PLACES	±---	±---	CHECKED BY ----	DATE ----			
				3 PLACES	±---	±---	APPROVED BY JFMURPHY				DATE 2014/10/16
				2 PLACES	±---	±---	MATERIAL NO. SEE CHART				DOCUMENT NO. SD-39710-001
				1 PLACE	±---	±---	DRAFT WHERE APPLICABLE MUST REMAIN WITHIN DIMENSIONS		SIZE C	THIS DRAWING CONTAINS INFORMATION THAT IS PROPRIETARY TO MOLEX INCORPORATED AND SHOULD NOT BE USED WITHOUT WRITTEN PERMISSION	