



Chipsmall Limited consists of a professional team with an average of over 10 year of expertise in the distribution of electronic components. Based in Hongkong, we have already established firm and mutual-benefit business relationships with customers from,Europe,America and south Asia,supplying obsolete and hard-to-find components to meet their specific needs.

With the principle of “Quality Parts,Customers Priority,Honest Operation,and Considerate Service”,our business mainly focus on the distribution of electronic components. Line cards we deal with include Microchip,ALPS,ROHM,Xilinx,Pulse,ON,Everlight and Freescale. Main products comprise IC,Modules,Potentiometer,IC Socket,Relay,Connector.Our parts cover such applications as commercial,industrial, and automotives areas.

We are looking forward to setting up business relationship with you and hope to provide you with the best service and solution. Let us make a better world for our industry!



Contact us

Tel: +86-755-8981 8866 Fax: +86-755-8427 6832

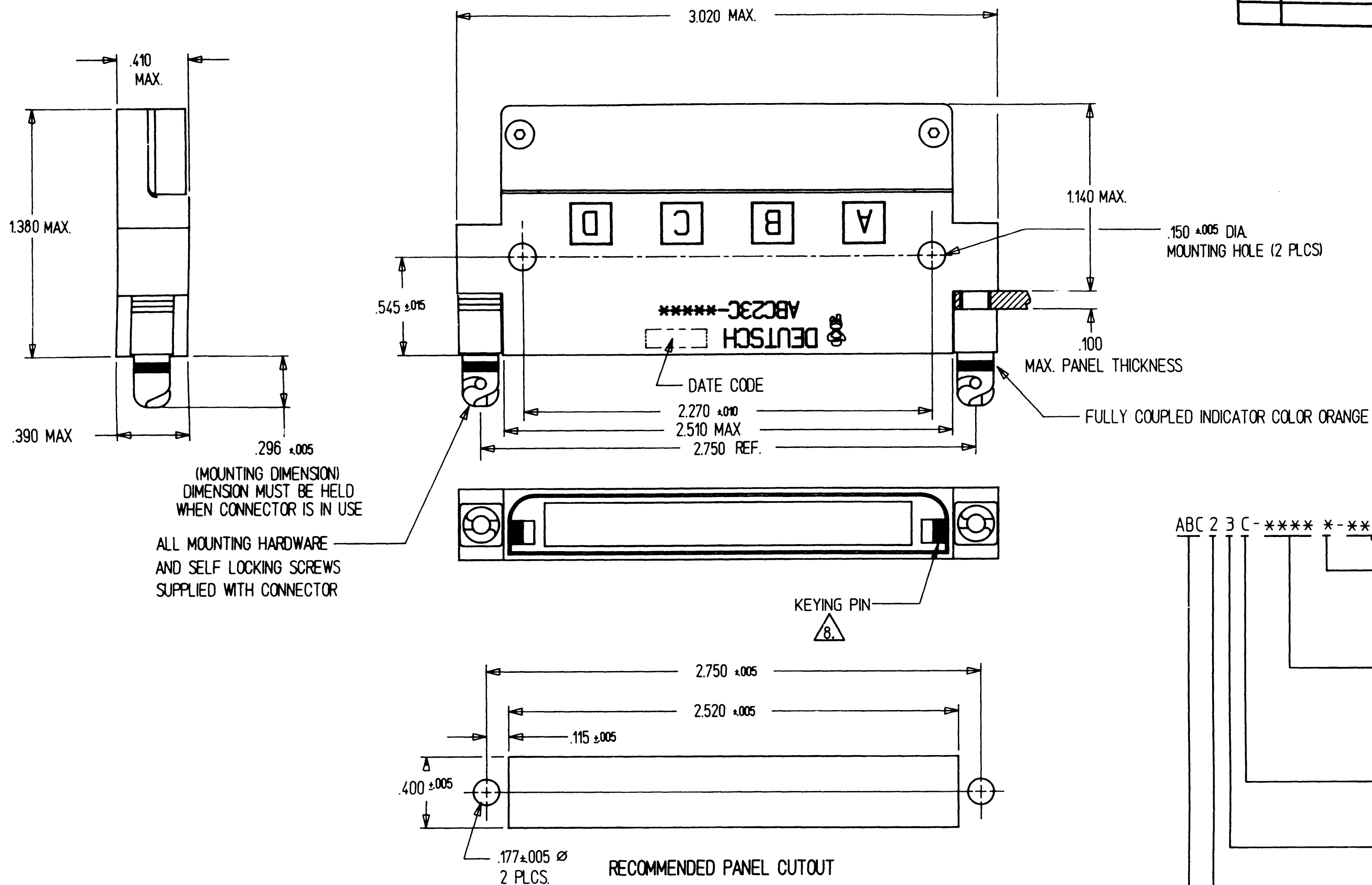
Email & Skype: info@chipsmall.com Web: www.chipsmall.com

Address: A1208, Overseas Decoration Building, #122 Zhenhua RD., Futian, Shenzhen, China



A ABC23C-*****

REV	DESCRIPTION	DATE	APPROVED
N/C	NEW RELEASE PER E.O.A 9887	6/16/89	L.L.A.
A	REVISED PER E.O. A 10205	11-5-92	P



ABC 2 3 C - * * * * * - * * * * * MODIFICATION

KEYING POSITIONS A THRU Y SEE ENVELOPE DWG. 55500 8.

MODULE ARRANGEMENTS SEE ENVELOPE DWG. 55500

0000 = 2 INCH SHELL W/ NO MODULES

STYLE C = DYNAMIC QUARTER LOCK

TYPES 3 = RECEPT. FLANGE MOUNT

SHELL SIZE 2=2 INCH

BASIC IDENTIFIER

8. WHEN NO LETTER IS CALLED OUT KEYING PINS ARE SHIPPED LOOSE AND INSTALLED BY THE CUSTOMER. EXAMPLE P/N: ABC23C-0000. IF LETTER A-Y IS CALLED OUT FACTORY INSTALLS KEYING PINS. EXAMPLE P/N: ABC23C-0000A.

- FOR INSERT ARRANGEMENTS AND KEYING POSITIONS SEE ENVELOPE DRAWING 55500.
- SEE DEUTSCH ENVELOPE DRAWINGS FOR CRIMP TOOL AND POSITIONER AND SOCKET CONTACTS 12336-** AND PIN CONTACTS 12331-**.
- MATES WITH ABC PLUG CONNECTOR.
- FINISH: SHELL DEUTSCH SPECIAL METALIZED SURFACE.
- MATERIAL: SHELL COMPOSITE MATERIAL. METAL COMPONENTS STAINLESS STEEL.
- FOR AVAILABILITY CONSULT FACTORY.
- DIMENSIONS ARE IN INCHES UNLESS OTHERWISE SPECIFIED.

NOTE:

SIGNATURE & DATE	
DR	TIM HOLT 5/3/89
CHK	L.L.A. 6/16/89
PE	TIM HOLT 5/3/89
APPD	
SCALE	NONE
WT	

RECEPTACLE
2 INCH
STACK MOUNTING
DYNAMIC QUARTER LOCK COUPLING
ABC CONNECTOR
ENVELOPE

CP	NATL CODE
DEUTSCH ENGINEERED CONNECTING DEVICES Municipal Airport Banning, California	
C	ABC23C-*****
DWG SIZE	CODE 11139
SHEET	1 OF 1