



Chipsmall Limited consists of a professional team with an average of over 10 year of expertise in the distribution of electronic components. Based in Hongkong, we have already established firm and mutual-benefit business relationships with customers from,Europe,America and south Asia,supplying obsolete and hard-to-find components to meet their specific needs.

With the principle of “Quality Parts,Customers Priority,Honest Operation,and Considerate Service”,our business mainly focus on the distribution of electronic components. Line cards we deal with include Microchip,ALPS,ROHM,Xilinx,Pulse,ON,Everlight and Freescale. Main products comprise IC,Modules,Potentiometer,IC Socket,Relay,Connector.Our parts cover such applications as commercial,industrial, and automotives areas.

We are looking forward to setting up business relationship with you and hope to provide you with the best service and solution. Let us make a better world for our industry!



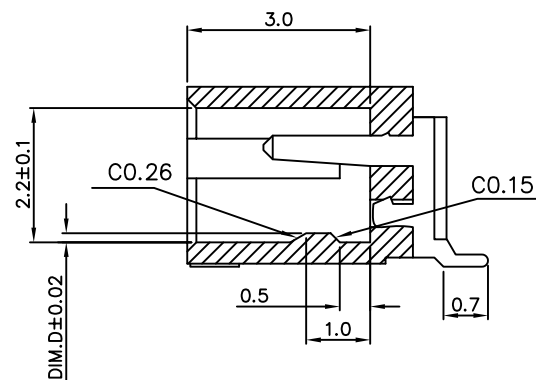
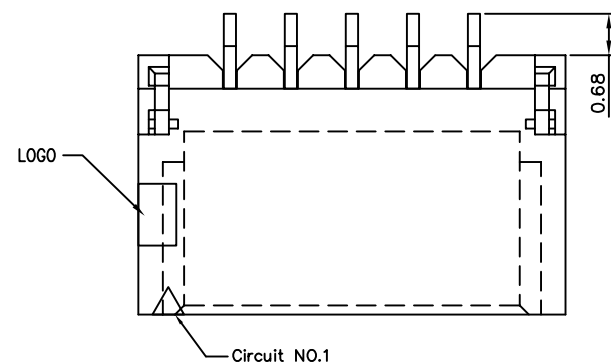
Contact us

Tel: +86-755-8981 8866 Fax: +86-755-8427 6832

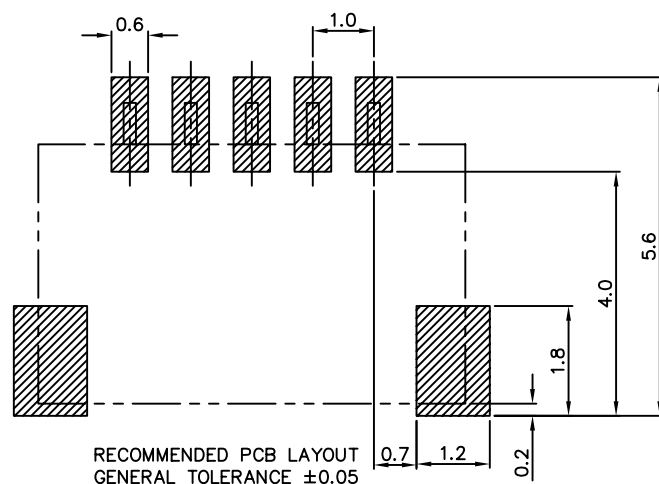
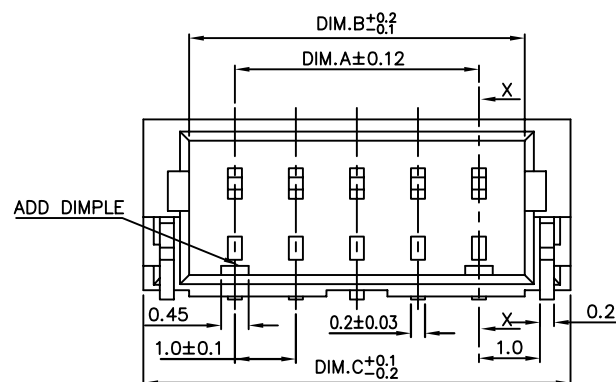
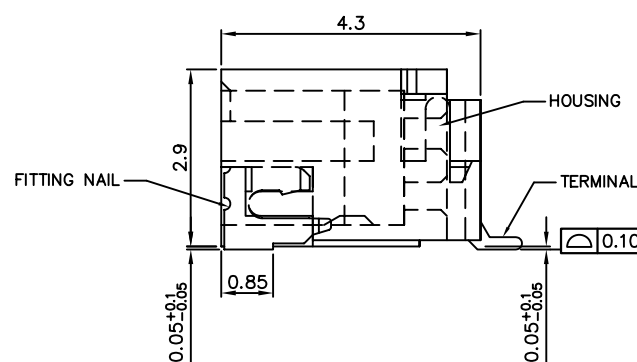
Email & Skype: info@chipsmall.com Web: www.chipsmall.com

Address: A1208, Overseas Decoration Building, #122 Zhenhua RD., Futian, Shenzhen, China





SECTION X-X



NOTES:

1. MATERIAL:
HOUSING: HALOGEN FREE HIGH TEMPERATURE
THERMOPLASTIC, UL94V-0.
TERMINAL: COPPER ALLOY.
FITTING NAIL: COPPER ALLOY.
2. FINISH:
UNDER PLATING: 30~60u" NICKEL OVERALL.
CONTACT AREA , SOLDER TAIL AND FITTING NAIL:
SELECTIVE GOLD PLATED OVERALL(SEE P/N DESCRIPTION).
3. REFLOW SOLDER CAPABLE TO 260°C PEAK TEMP.
FOR 10 SECONDS MAX.
4. SPEC. PLS. REFER TO GS-12-0930.
5. PACKAGE PLS. REFER TO GS-14-2103.

6. PART NUMBER DESCRIPTION:

10116782-XXX X X X LF

NO OF CONTACTS(CKT)-

PACKING _____
0: TAPE & REEL

LEAD FREE


— COLOR
0: BLACK

PLATING
1: 1u" MIN. GOLD FLASH OVERALL
(TERMINAL AND FITTING NAIL)

ORDERING INFORMATION FOR USER REFERENCE

ORDERING INFORMATION FOR USER REFERENCE		
NAME		PART NO.
BOARD CONN.		1016782-XXXXXXLF
CABLE CONN.	HOUSING(WIRE SIDE)	1016783-XXXXXXLF
	TERMINAL(AWG 28~32)	1016784-XXX

CKT	Dim.A	Dim.B	Dim.C	Dim.D	CKT	Dim.A	Dim.B	Dim.C	Dim.D	
002	1.0	2.4	4.0	0.20	012	11.0	12.4	14.0	0.15	
003	2.0	3.4	5.0		013	12.0	13.4	15.0	—	
004	3.0	4.4	6.0		014	13.0	14.4	16.0	—	
005	4.0	5.4	7.0		015	14.0	15.4	17.0	—	
006	5.0	6.4	8.0	0.15	016	15.0	16.4	18.0	0.08	
007	6.0	7.4	9.0		017	16.0	17.4	19.0		—
008	7.0	8.4	10.0		018	17.0	18.4	20.0		—
009	8.0	9.4	11.0		019	18.0	19.4	21.0		—
010	9.0	10.4	12.0		020	19.0	20.4	22.0		—
011	10.0	11.4	13.0		022	21.0	22.4	24.0		—

mat'l. code				surface ASME Y14.5 ✓		tolerance ASME Y14.5		projection 		product family WTB			
ltr		ecn no		dr		date		tolerances unless otherwise specified				title	
A				WL		05/11/11		angles		.X ± 0.25		MM	
B		ELX-N-21909		TIM		09/14/15		.XX ± 0.15		[INCH]		1.0mm WTB CONN. SMT R/A S/R TYPE	
								X*±2"		.XXX ± 0.10		scale	
								dr		WENDY CHEN 03/11/11		dwg no	
								enrg		WENDY CHEN 03/11/11		sheet 1 of 1 size	
								chr		WENDY CHEN 03/11/11		10116782	
								appd		GARY HSIEH 03/11/11		A4	
												type	
												CUSTOMER Drawing	
sheet index		revision		sheet		B							
				1									