



Chipsmall Limited consists of a professional team with an average of over 10 year of expertise in the distribution of electronic components. Based in Hongkong, we have already established firm and mutual-benefit business relationships with customers from,Europe,America and south Asia,supplying obsolete and hard-to-find components to meet their specific needs.

With the principle of “Quality Parts,Customers Priority,Honest Operation,and Considerate Service”,our business mainly focus on the distribution of electronic components. Line cards we deal with include Microchip,ALPS,ROHM,Xilinx,Pulse,ON,Everlight and Freescale. Main products comprise IC,Modules,Potentiometer,IC Socket,Relay,Connector.Our parts cover such applications as commercial,industrial, and automotives areas.

We are looking forward to setting up business relationship with you and hope to provide you with the best service and solution. Let us make a better world for our industry!



Contact us

Tel: +86-755-8981 8866 Fax: +86-755-8427 6832

Email & Skype: info@chipsmall.com Web: www.chipsmall.com

Address: A1208, Overseas Decoration Building, #122 Zhenhua RD., Futian, Shenzhen, China



LOC	DIST	REVISIONS					
		P	LTR	DESCRIPTION	DATE	DWN	APVD
E	B		C	ECR-05-011509	21SEP05	JMS	FWK

- NOTES:
- 1

PACK IN ACCORDANCE WITH AMP SPEC 107-3275
- 2

100 TRAY PACK IN ACCORDANCE WITH AMP SPEC 107-3275
- 3

Ag PLATING
- 4

THIS ITEM MUST BE WHITE
- 5

HAND TOOL: 9-478240-0
- 6

DIE SET: 9-1478246-0
- 7

ELECTRICAL CHARACTERISTICS

FREQUENCY RANGE: DC - 11 GHz

NOMINAL IMPEDANCE: 50 Ohm

INSULATION RESISTANCE: 5000 MOhm

WORKING VOLTAGE: 1000 Volts RMS at Sea Level

DIELECTRIC WITHSTAND VOLTAGE: 2500 Volts RMS Max

CONTACT RESISTANCE: CENTRE CONTACT: 1.00 mOhm Max

OUTER CONTACT: 1.00 mOhm Max

VSWR @ 4GHz: 1.30:1 Max

INSERTION LOSS dB @ x 4 GHz: 0.30 Max
- 8

MECHANICAL CHARACTERISTICS

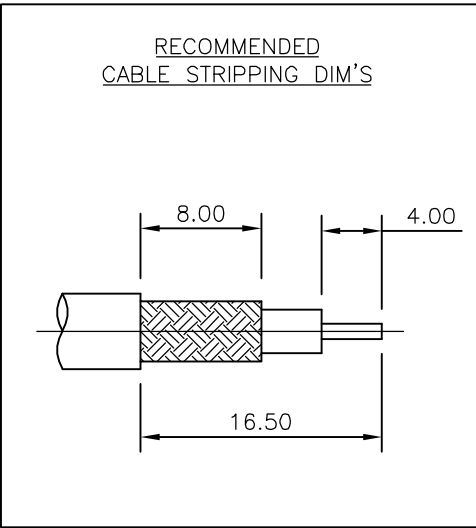
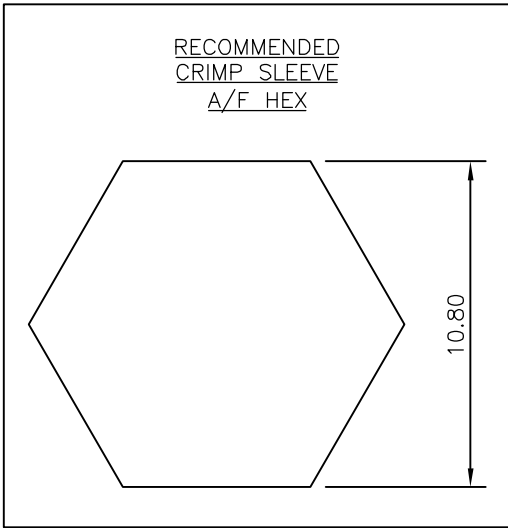
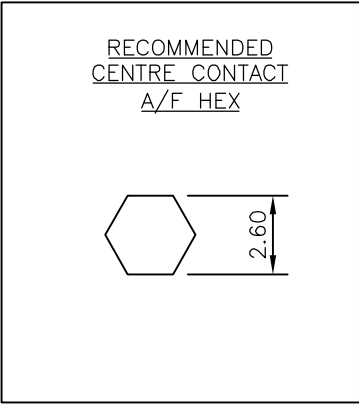
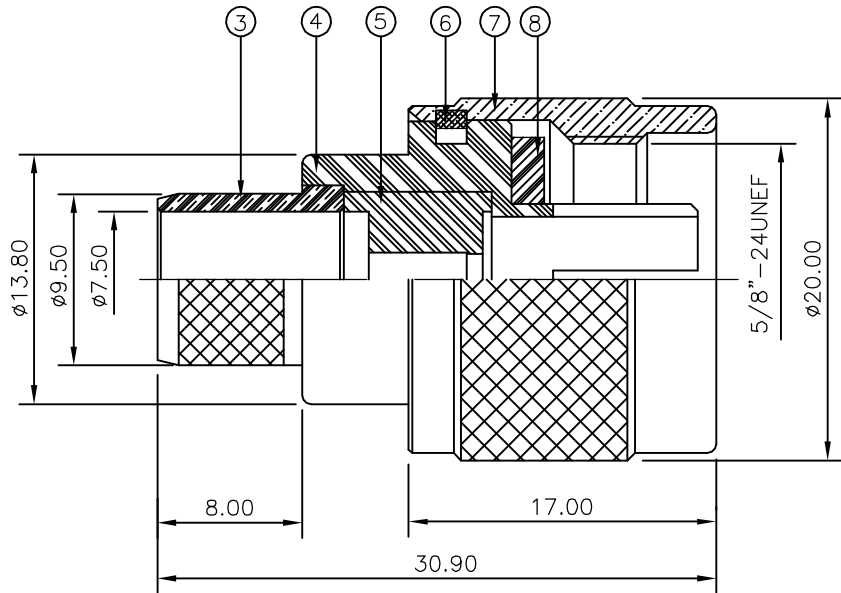
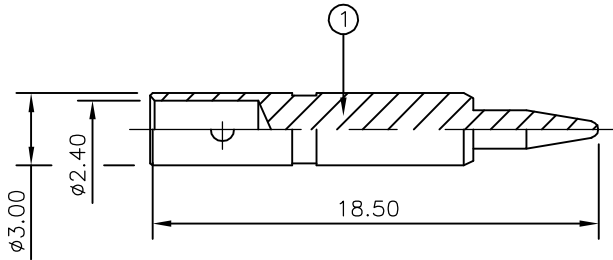
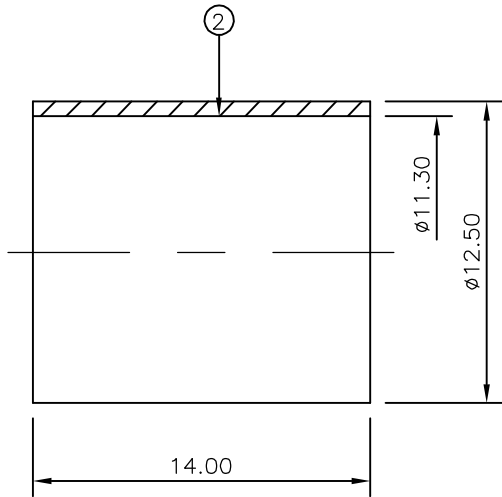
COUPLING NUT RETENTION FORCE: 445N Min

CABLE RETENTION FORCE: 350N Min

DURABILITY: 500 Cycles Min
- 9

ENVIRONMENTAL CHARACTERISTICS

OPERATING TEMPERATURE: -65 to +165 DegC



		1	1	SILICON RUBBER		GASKET	8
		1	1	BRASS		SHELL	7
		1	1	BRASS		CIRCLIP	6
		1	1	PTFE		INSULATION	5
		1	1	BRASS		BODY	4
		1	1	BRASS		CHASSIS	3
		1	1	BRASS		FERRULE	2
		1	1	BRASS		CONTACT	1
		6--0	1--0	MATERIAL		DESCRIPTION	ITEM
				QUANTITY PER ASSY			
				PARTS LIST			

THIS DRAWING IS A CONTROLLED DOCUMENT.

DIMENSIONS:
mm

MATERIAL
SEE TABLE

TOLERANCES UNLESS OTHERWISE SPECIFIED:

0 PLC ± -

1 PLC ± -

2 PLC ± -

3 PLC ± -

4 PLC ± -

ANGLES ± -

FINISH ± -

SEE TABLE

DWN J.SANDWELL 21SEP05

CHK S.PARLOW 21SEP05

APVD F.WHEELER-KING 21SEP05

PRODUCT SPEC 108-3435

APPLICATION SPEC 411-3247

WEIGHT -

CUSTOMER DRAWING

tyco

Electronics

Tyco Electronics Corporation
Bideford EX39 4HE

NAME
TYPE-N STRAIGHT PLUG CRIMP 50 OHM
RG9B/U, 214/U, URM 91, KX13, KX24

SIZE A3 CAGE CODE 00779 DRAWING NO C-1337415 RESTRICTED TO -

SCALE NTS SHEET 1 OF 1 REV C