



Chipsmall Limited consists of a professional team with an average of over 10 year of expertise in the distribution of electronic components. Based in Hongkong, we have already established firm and mutual-benefit business relationships with customers from,Europe,America and south Asia,supplying obsolete and hard-to-find components to meet their specific needs.

With the principle of “Quality Parts,Customers Priority,Honest Operation,and Considerate Service”,our business mainly focus on the distribution of electronic components. Line cards we deal with include Microchip,ALPS,ROHM,Xilinx,Pulse,ON,Everlight and Freescale. Main products comprise IC,Modules,Potentiometer,IC Socket,Relay,Connector.Our parts cover such applications as commercial,industrial, and automotives areas.

We are looking forward to setting up business relationship with you and hope to provide you with the best service and solution. Let us make a better world for our industry!



## Contact us

Tel: +86-755-8981 8866 Fax: +86-755-8427 6832

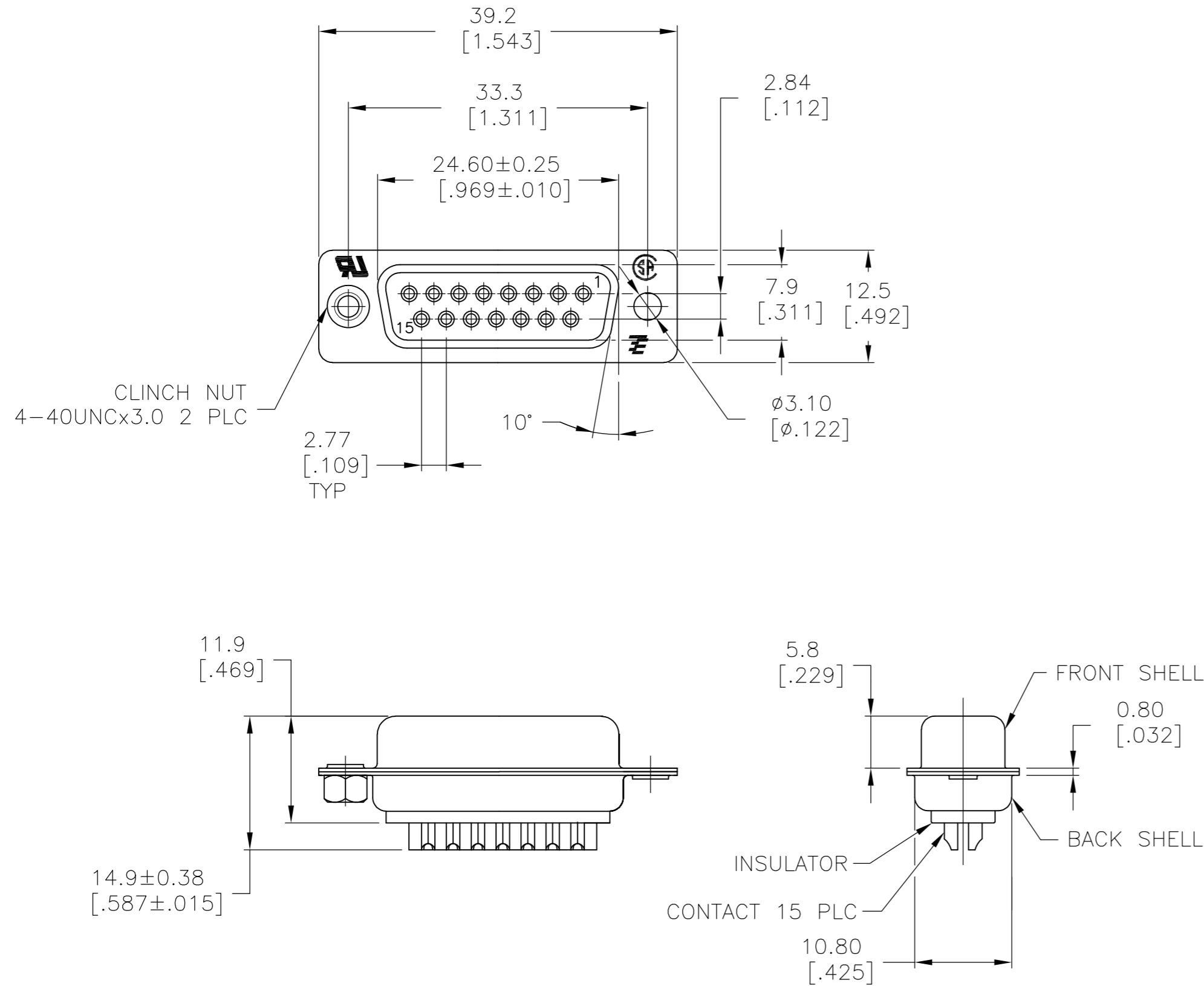
Email & Skype: info@chipsmall.com Web: www.chipsmall.com

Address: A1208, Overseas Decoration Building, #122 Zhenhua RD., Futian, Shenzhen, China



THIS DRAWING IS UNPUBLISHED. RELEASED FOR PUBLICATION  
 © COPYRIGHT - By - ALL RIGHTS RESERVED.

LOC		DIST		REVISIONS				
GP	00	P	LTR	DESCRIPTION		DATE	DWN	APVD
		Z		REVISED PER ECO-15-010090		16JUL2015	AP	DG



- 1 MATERIAL:  
 BACK INSULATOR: PBT, 30 %GF, UL94V-0, BLACK COLOR  
 FRONT INSULATOR: PBT, 30 %GF, UL94V-0, BLACK COLOR  
 CONTACT: BRASS  
 BACK SHELL: STEEL  
 CLINCH NUTS: BRASS  
 FRONT SHELL: STEEL
- 2 FINISH:  
 CONTACT: GOLD PLATING 0.00002[.0000008] MIN ON CONTACT AREA 0.00229 [.000090] MIN TIN-LEAD PLATING ALL OVER 0.00127[.000050] MIN NICKEL
- 3 CONTACT: GOLD PLATING 0.00076[.000030] MIN ON CONTACT AREA 0.00229 [.000090] MIN TIN-LEAD PLATING ALL OVER 0.00127[.000050] MIN NICKEL
- 4 SHELL: BRIGHT TIN 0.00241[.000095] MIN FULL SHELL
- 5 SHELL: BLUE ZINC: 0.00508[.000200] - 0.00762[.000300] OVER ENTIRE SHELL
- 6 CONTACT: GOLD PLATING 0.00002[.0000008] MIN ON CONTACT AREA 0.00229 [.000090] MIN HOT DIPPED TIN-COPPER PLATING ALL OVER 0.00127[.000050] MIN NICKEL.
- 7 CLINCH NUTS: NICKEL PLATING .00305-.00508[.000120-.000200]
- 8 SPECIFICATION  
 ELECTRICAL CHARACTERISTICS: CURRENT RATING: 3 AMPERES  
 DIELECTRIC WITHSTANDING VOLTAGE: AC 1000V r.m.s  
 INSULATION RESISTANCE: 5000 MEGOHMS MINIMUM AT DC 500V  
 CONTACT RESISTANCE: 10 MILLIOHMS MAXIMUM.
- 9 ROHS 2002/95/EC COMPLIANT
- 10 RECEPTACLE ASSEMBLY MATES WITH ANY 15 POSITION PLUG IN AMPLIMITE SERIES
- 11 SOLDER CUP WILL ACCOMMODATE 20 MAX AWG WIRE.
- 12 CONTACT: GOLD PLATING 0.00076[.000030] MIN ON CONTACT AREA 0.00229[.000090] MIN HOT DIPPED TIN-COPPER ALL OVER 0.00127[.000050] MIN NICKEL PLATING

△	OBSOLETE	STANDARD	NO	△	△	5-747909-4
△	OBSOLETE	STANDARD	YES	△	△	5-747909-7
		STANDARD	NO	△	△	5-747909-5
		STANDARD	NO	△	△	5-747909-2
	SUPERSEDED TO 5-747909-2	STANDARD	NO	△	△	747909-8
	SUPERSEDED TO 5-747909-7	STANDARD	YES	△	△	747909-7
	SUPERSEDED TO 5-747909-5	STANDARD	NO	△	△	747909-5
	SUPERSEDED TO 5-747909-4	STANDARD	NO	△	△	747909-4
	SUPERSEDED TO 5-747909-2	STANDARD	NO	△	△	747909-2
		PACKAGING TYPE	CLINCH NUTS	CONTACTS	SHELLS	PART NO.

THIS DRAWING IS A CONTROLLED DOCUMENT. DIMENSIONING AND TOLERANCING PER ASME Y14.5M-2009		DWN M.BINNER 03MAR03	TE Connectivity		
DIMENSIONS: mm [INCHES]		CHK R.BENDORF 05MAR03	NAME RECEPTACLE ASSEMBLY, SOLDER CUP, SIZE 2, 15 POSN, HD-20, AMPLIMITE		
TOLERANCES UNLESS OTHERWISE SPECIFIED:		APVD R.BENDORF 05MAR03	SIZE	CAGE CODE	DRAWING NO
0 PLC ± -		PRODUCT SPEC	A2	00779	C=747909
1 PLC ± 0.25		APPLICATION SPEC	SCALE	SHEET	REV
2 PLC ± 0.13			2:1	1 of 1	Z
3 PLC ± 0.05					
4 PLC ± -					
ANGLES ± 4°					
MATERIAL 1	FINISH SEE TABLE	WEIGHT -	CUSTOMER DRAWING		