



Chipsmall Limited consists of a professional team with an average of over 10 year of expertise in the distribution of electronic components. Based in Hongkong, we have already established firm and mutual-benefit business relationships with customers from,Europe,America and south Asia,supplying obsolete and hard-to-find components to meet their specific needs.

With the principle of “Quality Parts,Customers Priority,Honest Operation,and Considerate Service”,our business mainly focus on the distribution of electronic components. Line cards we deal with include Microchip,ALPS,ROHM,Xilinx,Pulse,ON,Everlight and Freescale. Main products comprise IC,Modules,Potentiometer,IC Socket,Relay,Connector.Our parts cover such applications as commercial,industrial, and automotives areas.

We are looking forward to setting up business relationship with you and hope to provide you with the best service and solution. Let us make a better world for our industry!



## Contact us

Tel: +86-755-8981 8866 Fax: +86-755-8427 6832

Email & Skype: [info@chipsmall.com](mailto:info@chipsmall.com) Web: [www.chipsmall.com](http://www.chipsmall.com)

Address: A1208, Overseas Decoration Building, #122 Zhenhua RD., Futian, Shenzhen, China



LOC	DIST	REVISIONS						
FX	00	P	LTR	DESCRIPTION		DATE	DWN	APVD
			C	REV	PER EC OK80-0373-02	31DEC2002	RGV	SSA
			C1	REV	PER EC OK80-0139-03	19MAY2003	DJA	SSA
			C2	REV	PER ECR-10-008554	21APR2010	VSS	SA

- 1

DIMENSION MUST BE HELD BETWEEN 

-A-

 AND 2.0mm FROM 

-A-

.
- 2

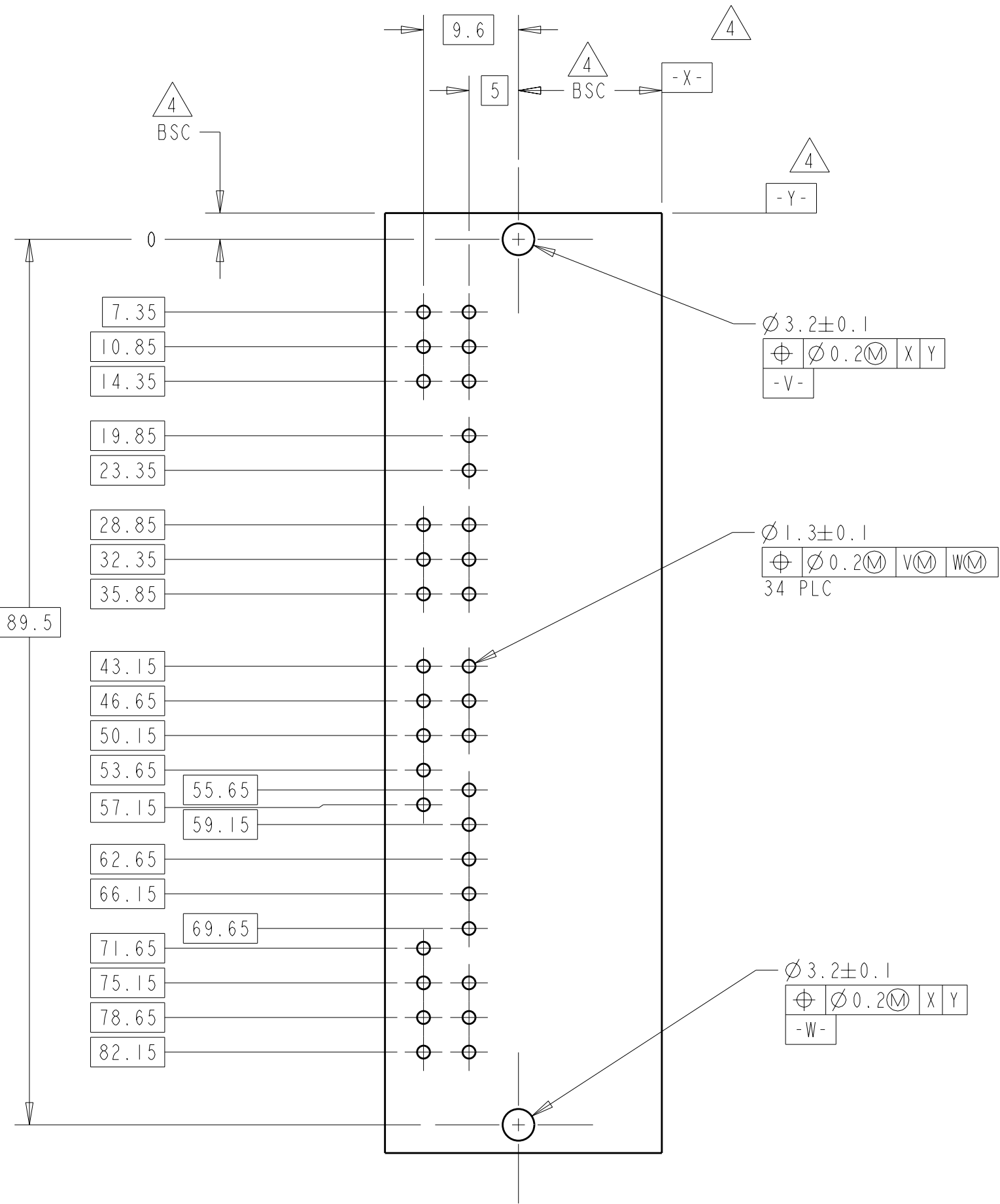
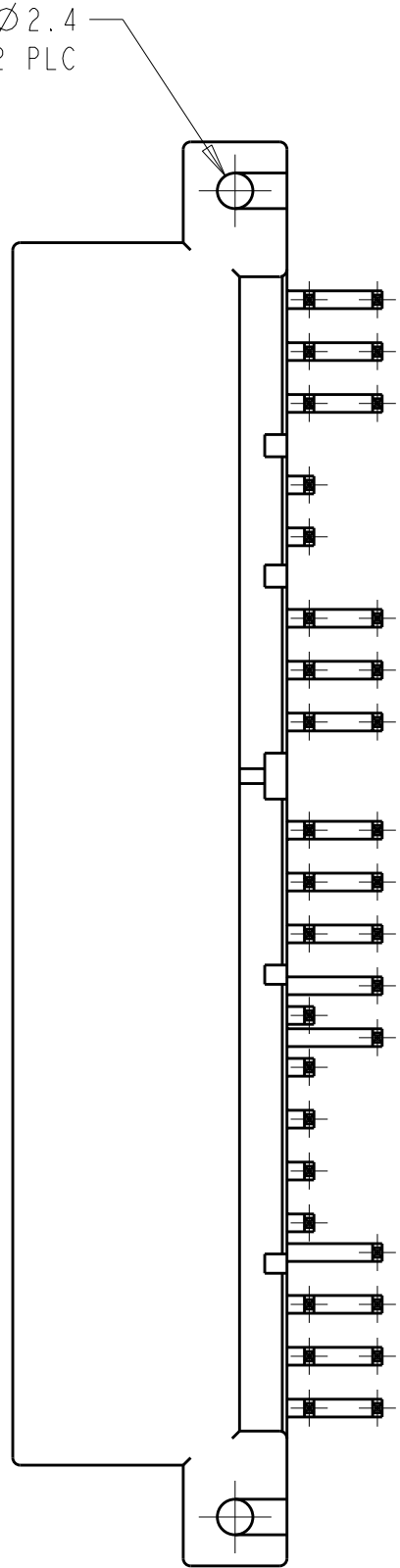
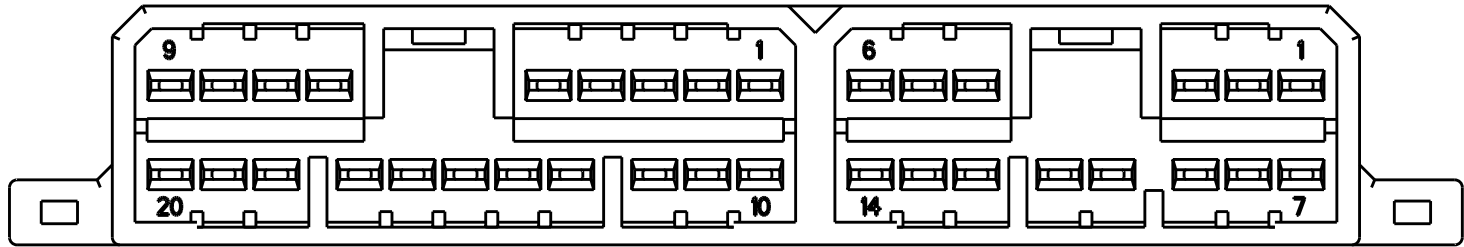
TO MATE WITH PLUG HOUSING SMOOTHLY.
- 3

USE M3x6 TAPPING SCREW JIS B1115 OR I122 (TYPE 2 OR 4) BEFORE SOLDER. RECOMMENDED TORQUE: 0.39Nm MAX.
- 4

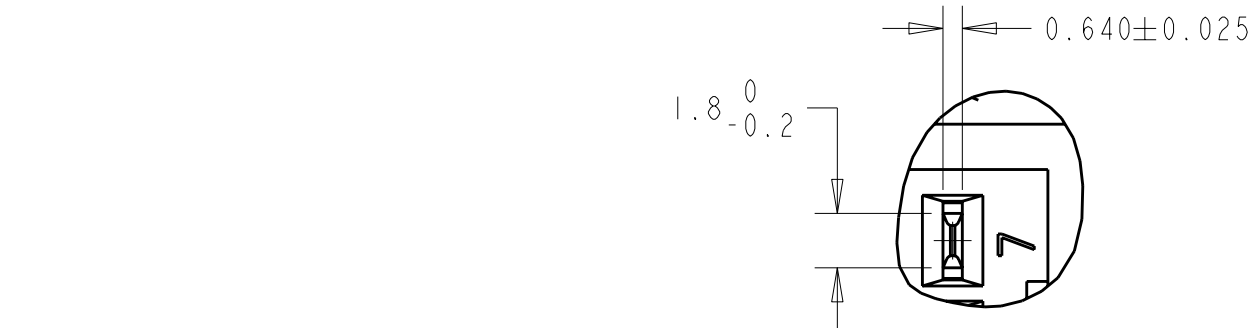
DATUMS AND BASIC DIMENSIONS ESTABLISHED BY CUSTOMER.
- 5

MATING PLUG PART NUMBERS ARE:  
173852 (14 POSITION)  
174952 (20 POSITION)
- 6

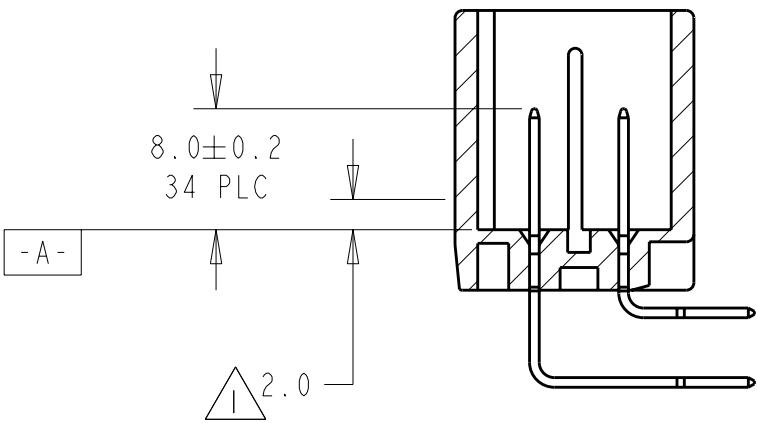
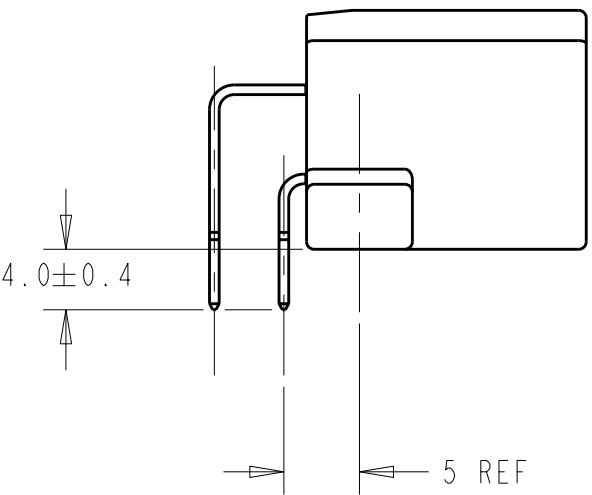
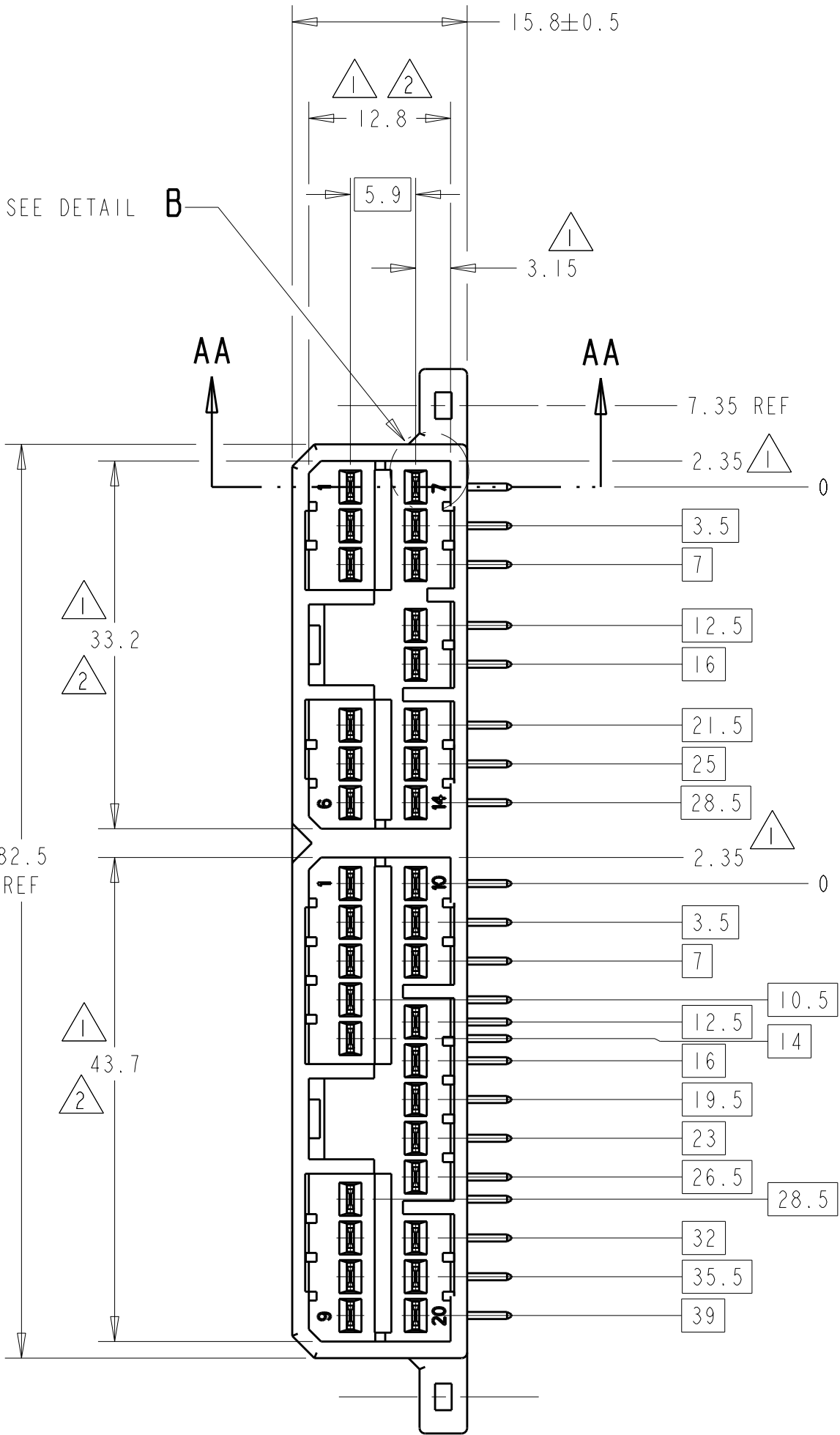
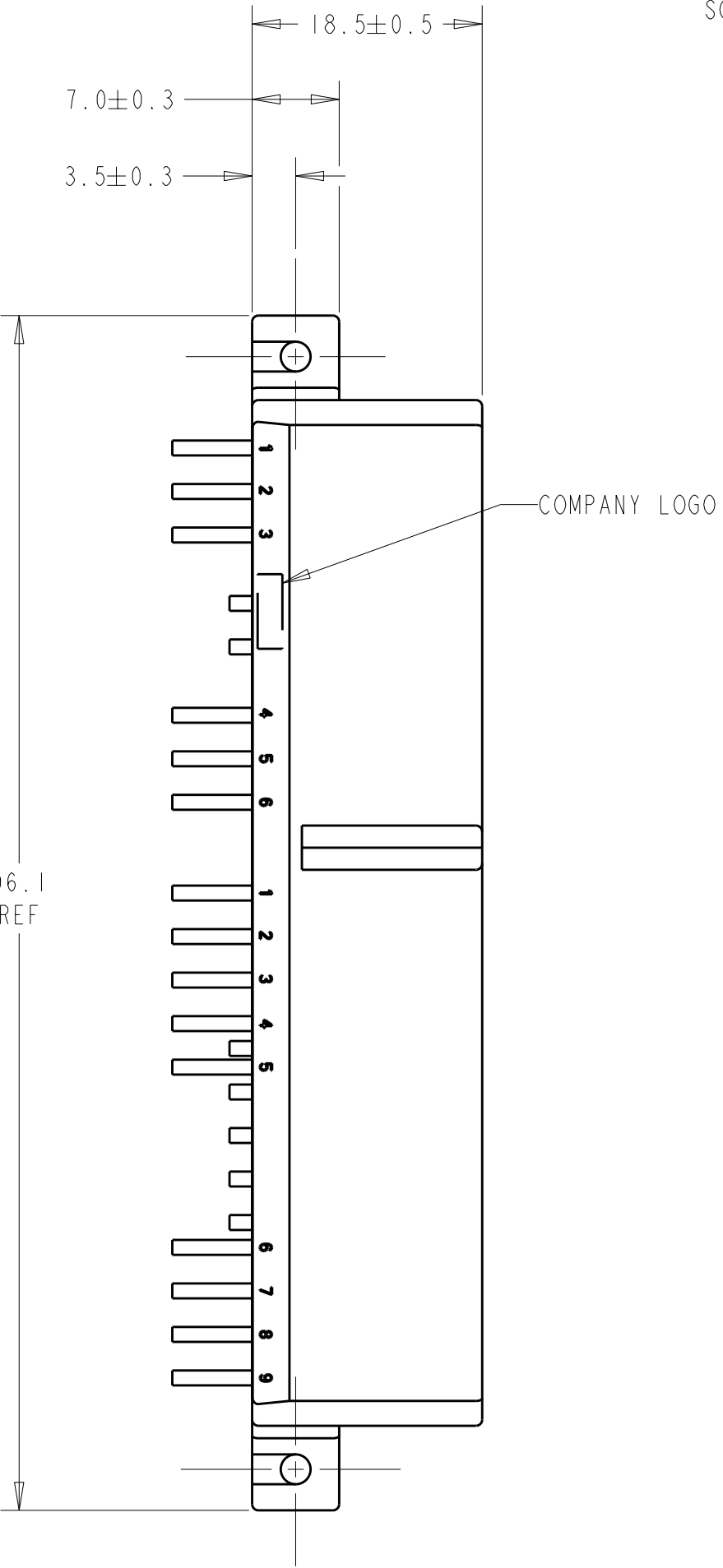
CIRCUIT NUMBERS:



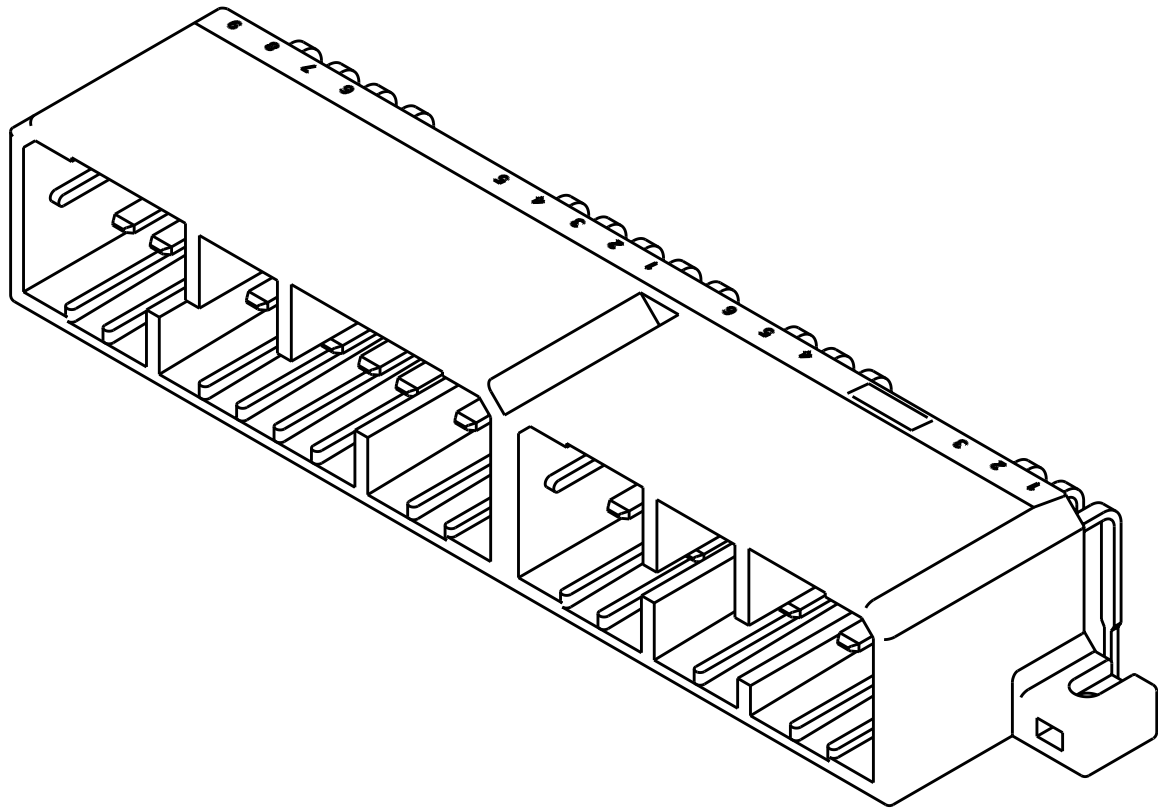
P.C. BOARD LAYOUT  
RECOMMENDED BOARD THICKNESS 1.60±0.15mm  
TOLERANCES ±0.1



DETAIL B  
SCALE 4:1



SECTION AA-AA



BRASS	POST-TIN	PBT	WHITE	9-1438309-1
MATERIAL	FINISH	MATERIAL	COLOR	PART NO
CONTACT		HOUSING		
DWN R. VESTAL	07NOV2001	<div><div><div></div><div>Tyco Electronics</div></div><div>Tyco Electronics Harrisburg, PA 17105-3608</div></div>		
CHK S. ASHLEY	07NOV2001			
APVD S. ASHLEY	07NOV2001	NAME 34 POSITION CAP HOUSING ASSEMBLY. .070 SERIES, HORIZONTAL, MULTILOCK I/O CONNECTOR		
TOLERANCES UNLESS OTHERWISE SPECIFIED:		PRODUCT SPEC 108-5216		
DIMENSIONS:		APPLICATION SPEC 114-5091		
mm		SIZE A1		
MATERIAL SEE TABLE		CAGE CODE 00779		
FINISH SEE TABLE		DRAWING NO C=1438309		
CUSTOMER DRAWING		RESTRICTED TO -		
		SCALE 2:1		
		SHEET 1		
		OF 1		
		REV C2		