



Chipsmall Limited consists of a professional team with an average of over 10 year of expertise in the distribution of electronic components. Based in Hongkong, we have already established firm and mutual-benefit business relationships with customers from,Europe,America and south Asia,supplying obsolete and hard-to-find components to meet their specific needs.

With the principle of “Quality Parts,Customers Priority,Honest Operation,and Considerate Service”,our business mainly focus on the distribution of electronic components. Line cards we deal with include Microchip,ALPS,ROHM,Xilinx,Pulse,ON,Everlight and Freescale. Main products comprise IC,Modules,Potentiometer,IC Socket,Relay,Connector.Our parts cover such applications as commercial,industrial, and automotives areas.

We are looking forward to setting up business relationship with you and hope to provide you with the best service and solution. Let us make a better world for our industry!



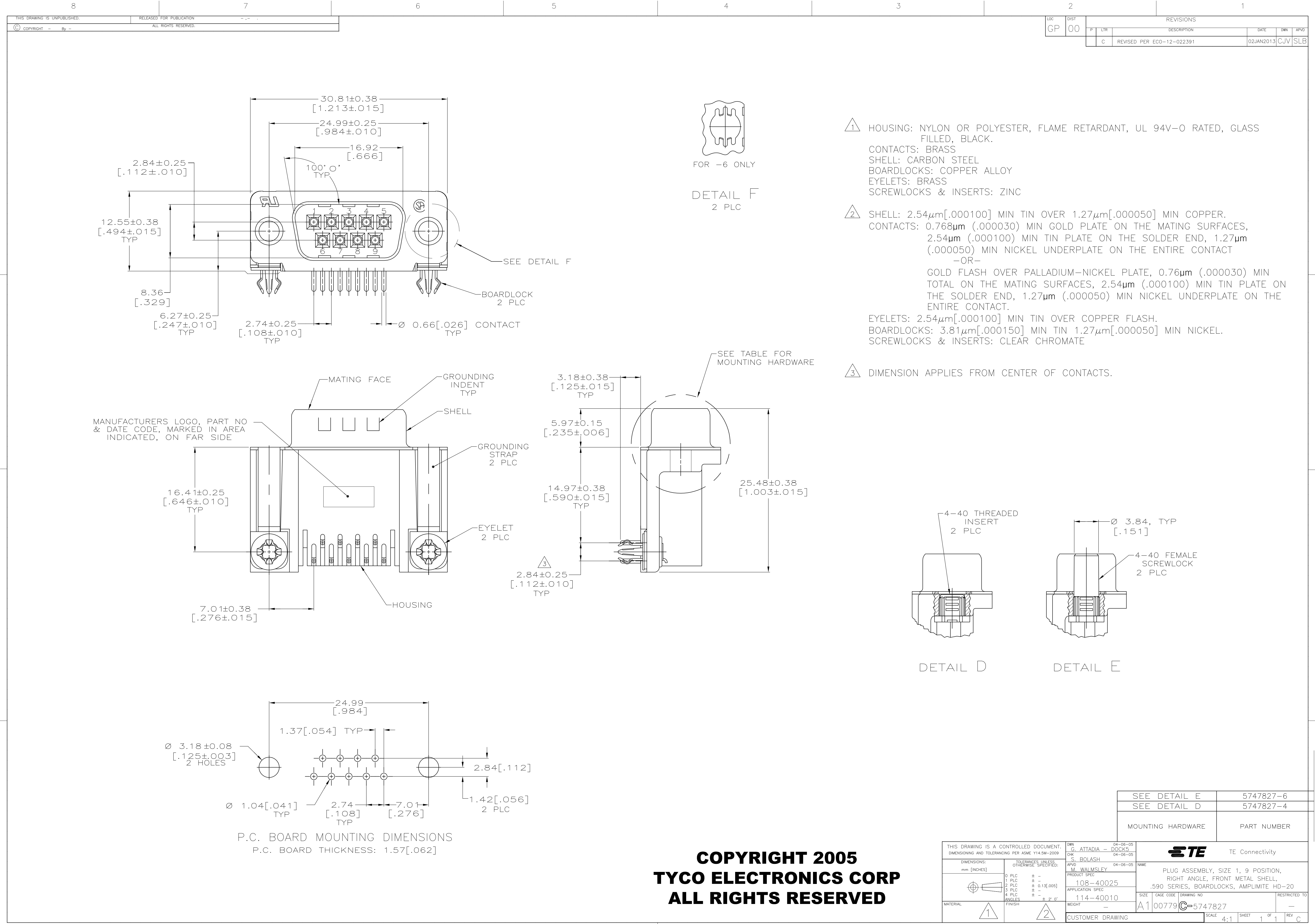
Contact us

Tel: +86-755-8981 8866 Fax: +86-755-8427 6832

Email & Skype: info@chipsmall.com Web: www.chipsmall.com

Address: A1208, Overseas Decoration Building, #122 Zhenhua RD., Futian, Shenzhen, China







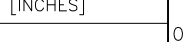
LOC		DIST		REVISIONS				
GP	00	P	LTR	DESCRIPTION	DATE	DWN	APVD	
		C		REVISED PER ECO-12-022391	02JAN2013	CJV	SLB	

- 1 HOUSING: NYLON OR POLYESTER, FLAME RETARDANT, UL 94V-0 RATED, GLASS FILLED, BLACK.
CONTACTS: BRASS
SHELL: CARBON STEEL
BOARDLOCKS: COPPER ALLOY
EYELETS: BRASS
SCREWLOCKS & INSERTS: ZINC
- 2 SHELL: $2.54\mu\text{m}$ [.000100] MIN TIN OVER $1.27\mu\text{m}$ [.000050] MIN COPPER.
CONTACTS: $0.768\mu\text{m}$ (.000030) MIN GOLD PLATE ON THE MATING SURFACES, $2.54\mu\text{m}$ (.000100) MIN TIN PLATE ON THE SOLDER END, $1.27\mu\text{m}$ (.000050) MIN NICKEL UNDERPLATE ON THE ENTIRE CONTACT -OR-
GOLD FLASH OVER PALLADIUM-NICKEL PLATE, $0.76\mu\text{m}$ (.000030) MIN TOTAL ON THE MATING SURFACES, $2.54\mu\text{m}$ (.000100) MIN TIN PLATE ON THE SOLDER END, $1.27\mu\text{m}$ (.000050) MIN NICKEL UNDERPLATE ON THE ENTIRE CONTACT.
EYELETS: $2.54\mu\text{m}$ [.000100] MIN TIN OVER COPPER FLASH.
BOARDLOCKS: $3.81\mu\text{m}$ [.000150] MIN TIN $1.27\mu\text{m}$ [.000050] MIN NICKEL.
SCREWLOCKS & INSERTS: CLEAR CHROMATE

- 3 DIMENSION APPLIES FROM CENTER OF CONTACTS.

**COPYRIGHT 2005
TYCO ELECTRONICS CORP
ALL RIGHTS RESERVED**

SEE DETAIL E	5747827-6
SEE DETAIL D	5747827-4
MOUNTING HARDWARE	PART NUMBER

THIS DRAWING IS A CONTROLLED DOCUMENT. DIMENSIONING AND TOLERANCING PER ASME Y14.5M-2009		DWN G. ATTADIA - 04-06-05 CHK S. BOLASH - 04-06-05	 TE Connectivity			
DIMENSIONS: mm [INCHES]		TOLERANCES UNLESS OTHERWISE SPECIFIED:				
	0 P/LC ± .	APVD M. WALMSLEY - 04-06-05	NAME PLUG ASSEMBLY, SIZE 1, 9 POSITION, RIGHT ANGLE, FRONT METAL SHELL, .590 SERIES, BLOCKLOCKS, AMPLIMITE HD-20			
	1 P/LC ± .	PRODUCT SPEC 108-40025				
	2 P/LC ± .013[.005]	APPLICATION SPEC 114-40010				
4 P/LC ± .	WEIGHT -	SIZE A1	CAGE CODE 00779	DRAWING NO C5747827	RESTRICTED TO -	
MATERIAL	FINISH	CUSTOMER DRAWING		SCALE 4:1	SHEET 1 OF 1	REV C