



Chipsmall Limited consists of a professional team with an average of over 10 year of expertise in the distribution of electronic components. Based in Hongkong, we have already established firm and mutual-benefit business relationships with customers from,Europe,America and south Asia,supplying obsolete and hard-to-find components to meet their specific needs.

With the principle of “Quality Parts,Customers Priority,Honest Operation,and Considerate Service”,our business mainly focus on the distribution of electronic components. Line cards we deal with include Microchip,ALPS,ROHM,Xilinx,Pulse,ON,Everlight and Freescale. Main products comprise IC,Modules,Potentiometer,IC Socket,Relay,Connector.Our parts cover such applications as commercial,industrial, and automotives areas.

We are looking forward to setting up business relationship with you and hope to provide you with the best service and solution. Let us make a better world for our industry!



Contact us

Tel: +86-755-8981 8866 Fax: +86-755-8427 6832

Email & Skype: info@chipsmall.com Web: www.chipsmall.com









Address: A1208, Overseas Decoration Building, #122 Zhenhua RD., Futian, Shenzhen, China

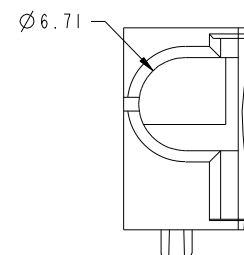


Tous droits strictement reserves. Reproduction ou communication a des tiers interdite sous quelque forme que ce soit sans autorisation écrite du propriétaire. Propriete de c FCI. Droits de reproduction FCI.

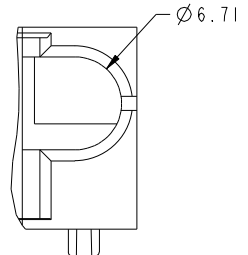


All rights strictly reserved. Reproduction or issue to third parties in any form whatever is not permitted without written authority from the proprietor. Property of FCI. Copyright FCI.

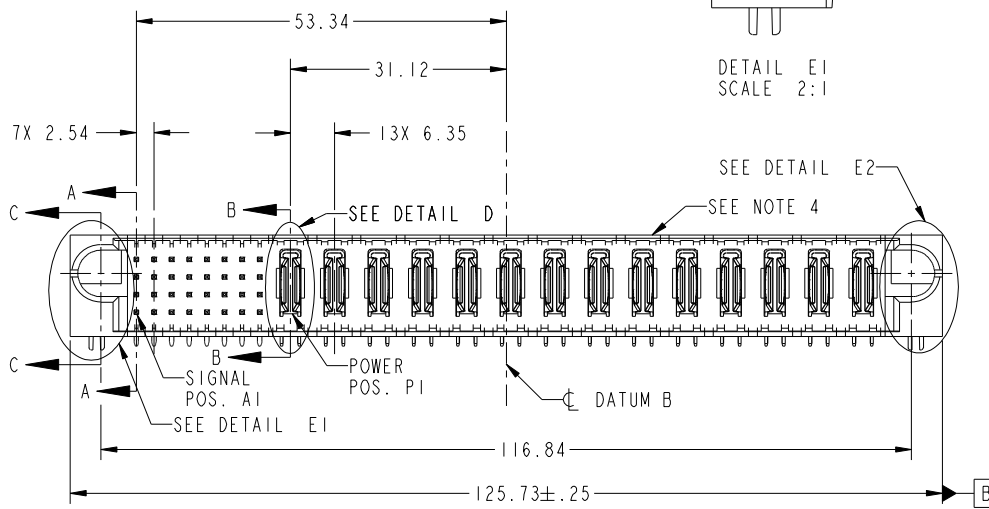
PRODUCT NO.	ROWS	SIGNAL								POWER														E2		
		E1	1	2	3	4	5	6	7	8	P1	P2	P3	P4	P5	P6	P7	P8	P9	P10	P11	P12	P13		P14	
51731-023-- NOTE: 3	D C B A		H	H	H	H	H	H	H	H	PA	PA	PA	PA	PA	PA	PA	PA	PA	PA	PA	PA	PA	PA	PA	
			G	G	G	G	G	G	G	G																
			S	S	S	S	S	S	S	S																
			R	R	R	R	R	R	R	R																



DETAIL E1
SCALE 2:1



DETAIL E2
SCALE 2:1



CODE	DIM "M" MATING LENGTH	CONTACT TYPE
G	[5.59]	SIGNAL
H	[5.59]	SIGNAL
R	[6.86]	SIGNAL
S	[6.86]	SIGNAL
PA	[N/A]	POWER
HA	[N/A]	HOLD-DOWN

mat'l code				SEE NOTE		tolerances unless otherwise specified		CUSTOMER		FCI	
litr	ecn no.	dr	date					COPY		www.fciconnect.com	
A	V04-0456	TAB	05/05/04	linear		0.X ±0.5		projection		title	32S + 14P
B	V04-0915	TAB	09/17/04			0.XX ±0.25				RIGHT ANGLE SOLDER HEADER	
C	V04-1133	TAB	12/02/04	angles		0.XXX ±0.10				product family	PwrBlade
D	DG05-0531	GuoJM	12/15/05	dr	T. BRUNGARD	05/05/04		MIM		size	code
E	DG05-0561	GuoJM	12/22/05	enrg	M. GRAY	05/05/04				dwg no	213
F	DG06-0367	JULIA	09/05/06	chr	M. GRAY	05/05/04		scale		51731-023	
G	DG07-0498	JULIA	09/15/08	appd	M. GRAY	05/05/04		1:1		sheet	1 of 4
sheet index	revision sheet	G	G	G	G					cage code	22526
		1	2	3	4						

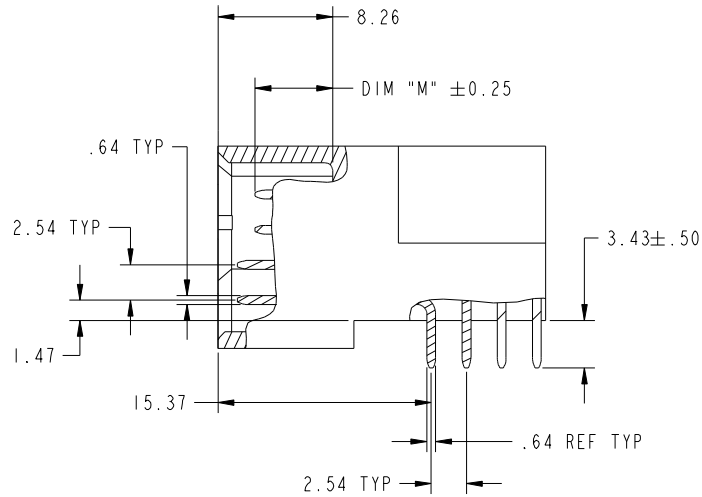
Pro/E

Tous droits strictement reserves. Reproduction ou communication a des tiers interdite sous quelque forme que ce soit sans autorisation écrite du propriétaire. Propriete de c FCI. Droits de reproduction FCI.

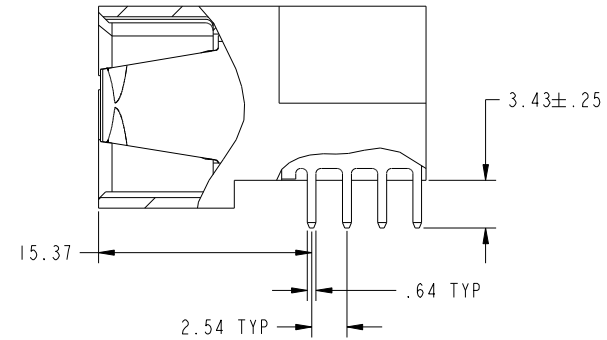


All rights strictly reserved. Reproduction or issue to third parties in any form whatever is not permitted without written authority from the proprietor. Property of FCI. Copyright FCI.

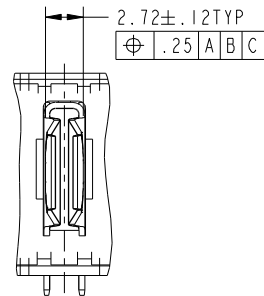
PRODUCT NUMBER
51731-023--
NOTE: 3



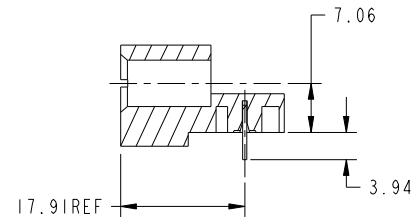
BROKEN-OUT SECTION A-A
SCALE 2:1




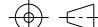

BROKEN-OUT SECTION B-B
SCALE 2:1



DETAIL D
SCALE 2:1



SECTION C-C

mat'l code				SEE NOTE		tolerances unless otherwise specified		CUSTOMER		 www.fciconnect.com	
litr	ecn no.	dr	date	linear	0.X ±0.5		COPY			title	
G					0.XX ±0.25		projection			32S + 14P	
					0.XXX ±0.10					RIGHT ANGLE SOLDER HEADER	
				angles	0° ±2°				 scale 1:1	product family	
				dr	T. BRUNGARD	05/05/04	PwrBlade			code	
				enrg	M. GRAY	05/05/04	size			dwg no	
				chr	M. GRAY	05/05/04	A			51731-023	
				appd	M. GRAY	05/05/04				213	
sheet index		revision sheet								sheet	2

cage code 22526

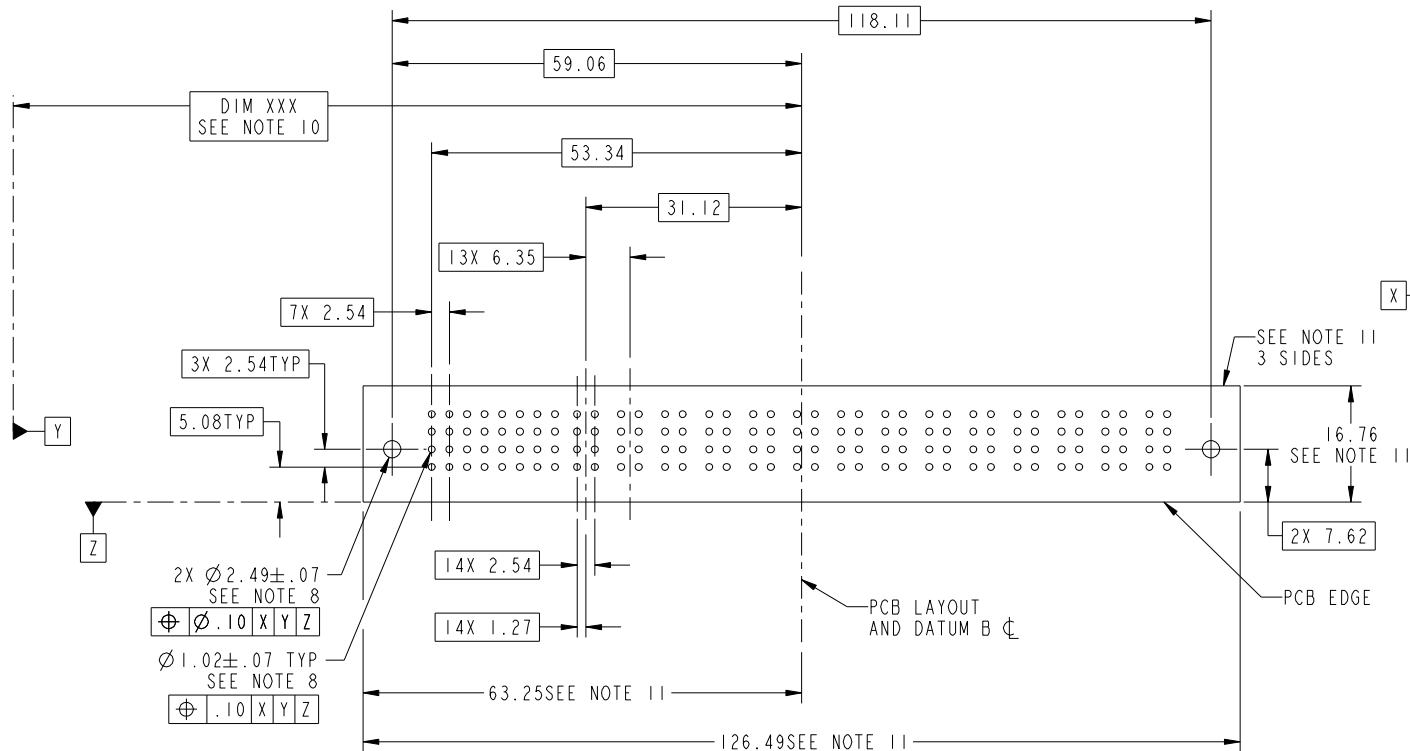
Pro/E

Tous droits strictement reserves. Reproduction ou communication a des tiers interdite sous quelque forme que ce soit sans autorisation écrite du propriétaire. Propriete de c FCI. Droits de reproduction FCI.



All rights strictly reserved. Reproduction or issue to third parties in any form whatever is not permitted without written authority from the proprietor. Property of FCI. Copyright FCI.

PRODUCT NUMBER
51731-023--
NOTE: 3



RECOMMENDED PCB LAYOUT

mat'l code				SEE NOTE		tolerances unless otherwise specified		CUSTOMER		FCI	
litr	ecn no.	dr	date					COPY		www.fciconnect.com	
G				linear		0.X ±0.5		projection		title 32S + 14P	
						0.XX ±0.25				RIGHT ANGLE SOLDER HEADER	
				angles		0.XXX ±0.10				product family PwrBlade	
				dr	T. BRUNGARD	05/05/04				size	code 213
				enrg	M. GRAY	05/05/04				dwg no	sheet 3
				chr	M. GRAY	05/05/04				51731-023	
				appd	M. GRAY	05/05/04					
sheet index	revision sheet							scale 1:1			

Pro/E

cage code 22526

