



Chipsmall Limited consists of a professional team with an average of over 10 year of expertise in the distribution of electronic components. Based in Hongkong, we have already established firm and mutual-benefit business relationships with customers from,Europe,America and south Asia,supplying obsolete and hard-to-find components to meet their specific needs.

With the principle of “Quality Parts,Customers Priority,Honest Operation,and Considerate Service”,our business mainly focus on the distribution of electronic components. Line cards we deal with include Microchip,ALPS,ROHM,Xilinx,Pulse,ON,Everlight and Freescale. Main products comprise IC,Modules,Potentiometer,IC Socket,Relay,Connector.Our parts cover such applications as commercial,industrial, and automotives areas.

We are looking forward to setting up business relationship with you and hope to provide you with the best service and solution. Let us make a better world for our industry!



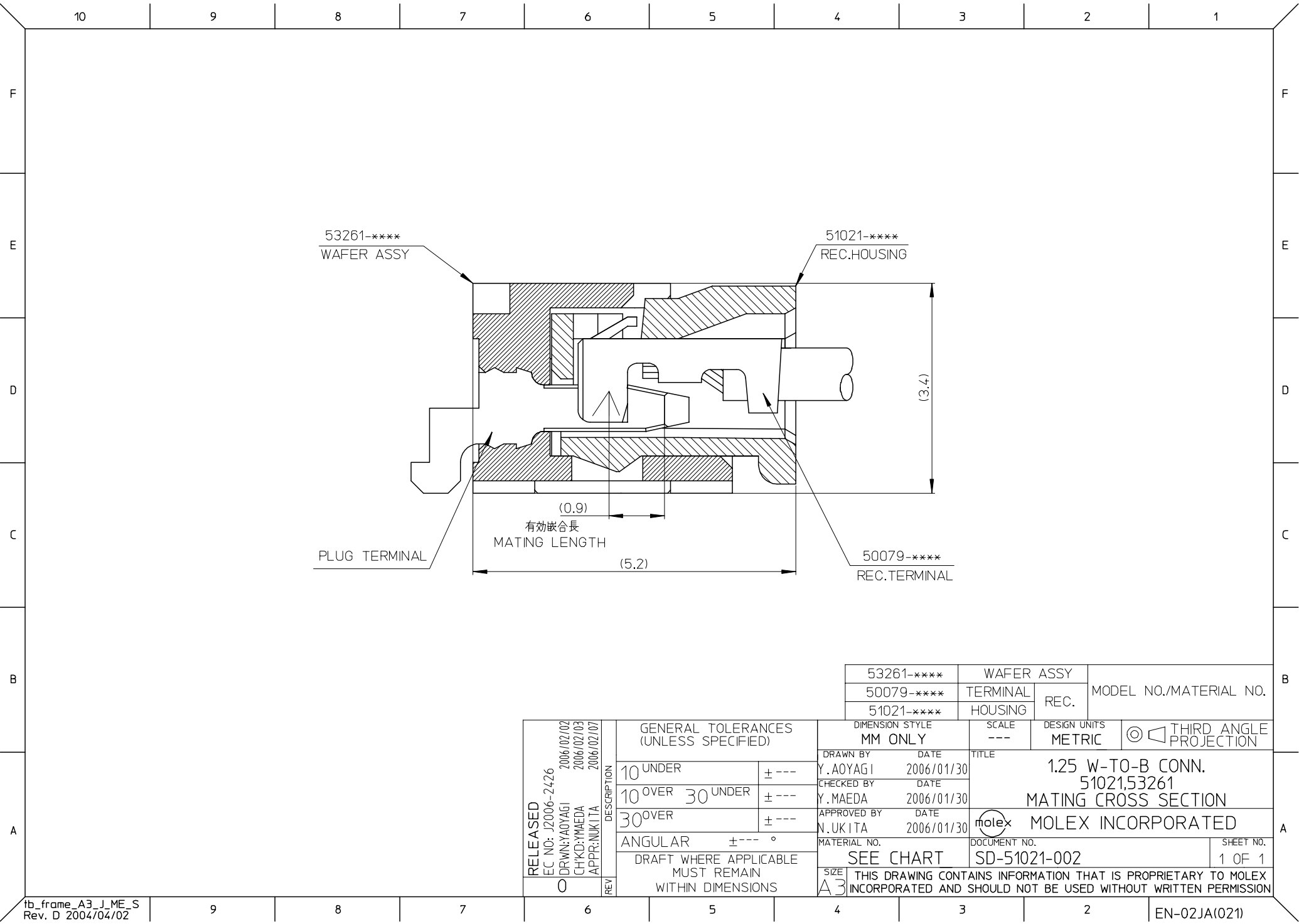
Contact us

Tel: +86-755-8981 8866 Fax: +86-755-8427 6832

Email & Skype: info@chipsmall.com Web: www.chipsmall.com

Address: A1208, Overseas Decoration Building, #122 Zhenhua RD., Futian, Shenzhen, China



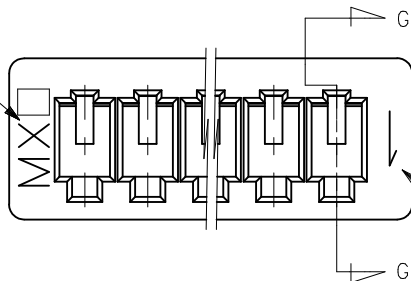


53261-****	WAFER ASSY	MODEL NO./MATERIAL NO.
50079-****	TERMINAL	
51021-****	HOUSING	

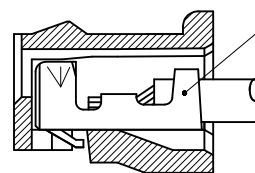
RELEASED EC NO: J2006-2426 DRWN:YAOYAGI 2006/02/02 CHKD:YMAEDA 2006/02/03 APPR:NUKITA 2006/02/07 REV 0	DESCRIPTION	GENERAL TOLERANCES (UNLESS SPECIFIED)		DIMENSION STYLE MM ONLY		SCALE ---	DESIGN UNITS METRIC	THIRD ANGLE PROJECTION	
		10 UNDER	± ---	DRAWN BY Y.AOYAGI	DATE 2006/01/30	TITLE 1.25 W-TO-B CONN. 51021,53261 MATING CROSS SECTION			
		10 OVER 30 UNDER	± ---	CHECKED BY Y.MAEDA	DATE 2006/01/30				
		30 OVER	± ---	APPROVED BY N.UKITA	DATE 2006/01/30	MOLEX INCORPORATED			
		ANGULAR ±--- °		MATERIAL NO.					
		DRAFT WHERE APPLICABLE MUST REMAIN WITHIN DIMENSIONS		SEE CHART		SD-51021-002		1 OF 1	
			SIZE A3		THIS DRAWING CONTAINS INFORMATION THAT IS PROPRIETARY TO MOLEX INCORPORATED AND SHOULD NOT BE USED WITHOUT WRITTEN PERMISSION				

10 9 8 7 6 5 4 3 2 1

トレードマーク
TRADE MARK



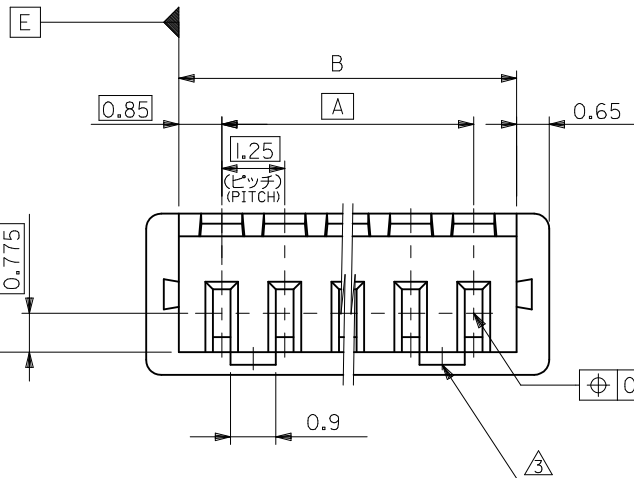
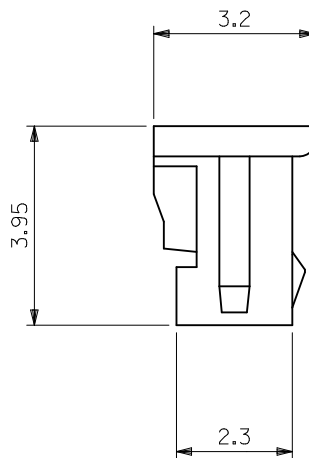
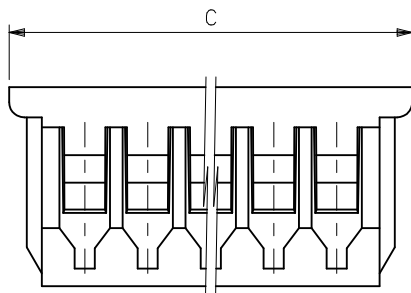
CKT.NO.1



SECT. G-G

注記 NOTES

- △ 適合ターミナル : 50058, 50079 シリーズ
APPLICABLE TERMINAL : 50058, 50079 SERIES
- 2 嵌合相手 : 53047, 53048, 53261, 53398 シリーズ
MATE WITH : 53047, 53048, 53261, 53398 SERIES
- △ 3 ロックは、2, 3極は1ヶ, 4極以上は2ヶとする。
LOCKING WINDOW : ONE PLACE FOR 2 & 3 CKT.
AND TWO PLACES FOR MORE THAN 3 CKT.
- △ 4 ウエハーの色 COLOR OF WAFER
ENG. NO. の下1桁に対応する。
CORRESPONDS TO LAST DIGIT OF ENG.NO.
黒 BLACK :51021-**01
赤 RED :51021-**02
黄 YELLOW :51021-**03
青 BLUE :51021-**04



0.5 E F

MATERIAL
PBTP UL94V-0

23	21.7	20	51021 -170*	17
20.5	19.2	17.5	-150*	15
19.25	17.95	16.25	-140*	14
18	16.7	15	-130*	13
16.75	15.45	13.75	-120*	12
15.5	14.2	12.5	-110*	11
14.25	12.95	11.25	-100*	10
13	11.7	10	-090*	9
11.75	10.45	8.75	-080*	8
10.5	9.2	7.5	-070*	7
9.25	7.95	6.25	-060*	6
8	6.7	5	-050*	5
6.75	5.45	3.75	-040*	4
5.5	4.2	2.5	-030*	3
4.25	2.95	1.25	51021 -020*	2
C	B	A	ENG.NO. △	極数 CKTS.

REVISED
EC NO: J2011-1763
DRW:RHORI 2011/06/17
CHKD:KASAKAWA 2011/06/29
APPR:NUKITA 2011/06/30

GENERAL TOLERANCES (UNLESS SPECIFIED)	
10 UNDER	±0.2
10 OVER 30 UNDER	±0.25
30 OVER	±0.3
ANGULAR	±3 °
DRAFT WHERE APPLICABLE MUST REMAIN WITHIN DIMENSIONS	

DIMENSION STYLE MM ONLY	
DRAWN BY	DATE
TASAKAWA	'95/05/31
CHECKED BY	DATE
HIRAMOTO	'95/05/31
APPROVED BY	DATE
MFUKUSHIMA	'95/05/31
MATERIAL NO.	
SEE TABLE	
SIZE	A3

SCALE 10:1	DESIGN UNITS METRIC	THIRD ANGLE PROJECTION	TITLE 1.25 W/ B CONN.REC.HS'G (DYED COLOR)
MOLEX INCORPORATED		DOCUMENT NO. SD-51021-004	SHEET NO. 1 OF 1
THIS DRAWING CONTAINS INFORMATION THAT IS PROPRIETARY TO MOLEX INCORPORATED AND SHOULD NOT BE USED WITHOUT WRITTEN PERMISSION			